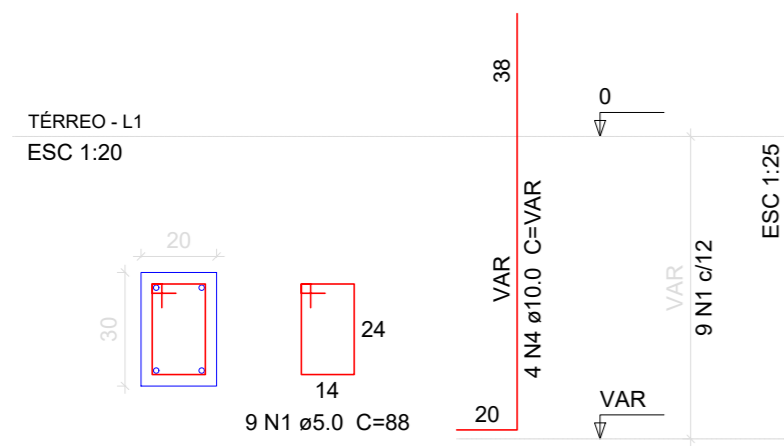
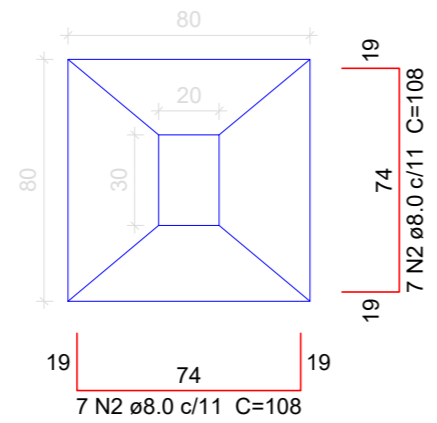


P1=P8=P13=P20



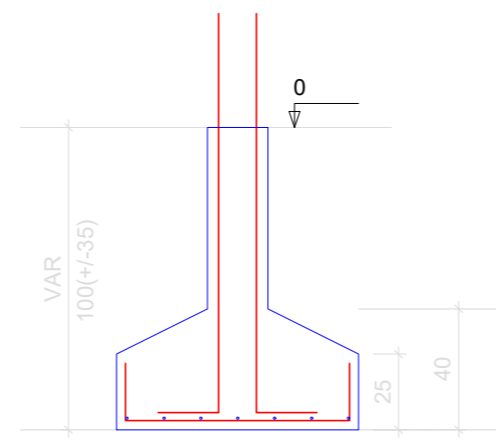
S1=S8=S13=S20

PLANTA  
ESC 1:25

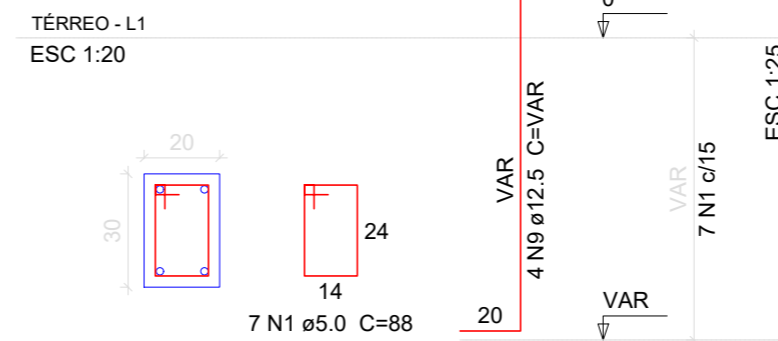


Solo com capacidade de suporte > 2.50 kgf/cm<sup>2</sup>  
Solo compactado sobre a sapata  
peso específico > 1600.00 kgf/m<sup>3</sup>

CORTE  
ESC 1:25

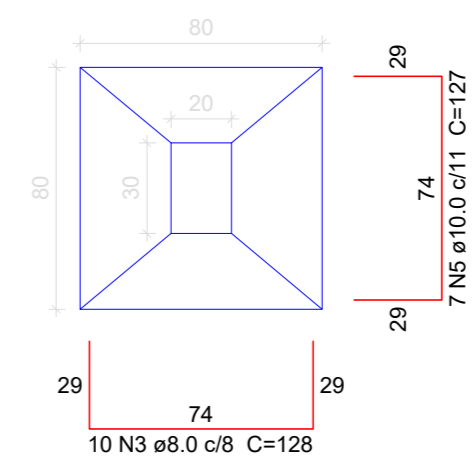


P9=P10=P11=P12



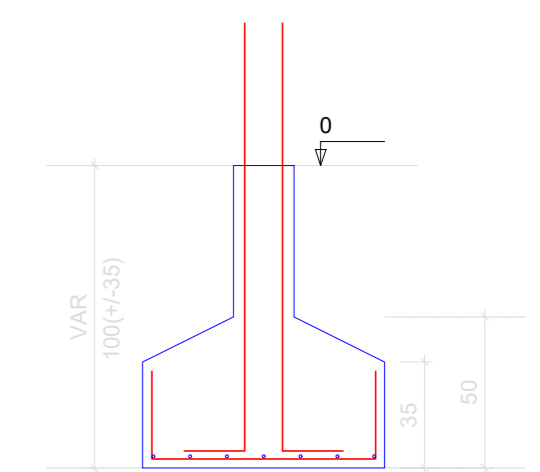
S9=S10=S11=S12

PLANTA  
ESC 1:25

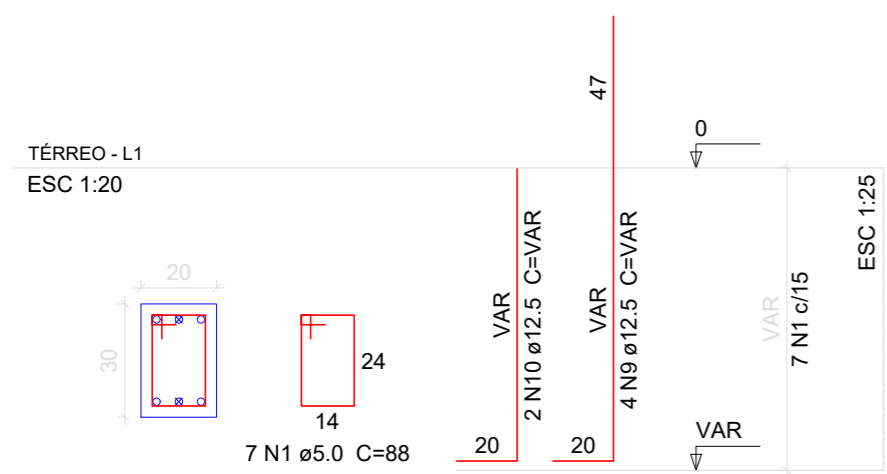


Solo com capacidade de suporte > 2.50 kgf/cm<sup>2</sup>  
Solo compactado sobre a sapata  
peso específico > 1600.00 kgf/m<sup>3</sup>

CORTE  
ESC 1:25

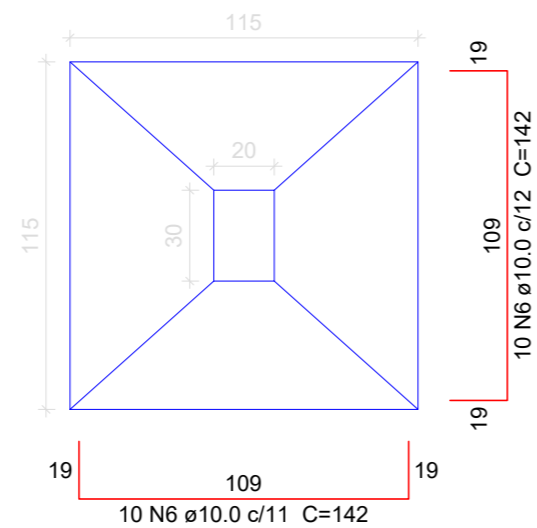


P2=P7=P14=P19



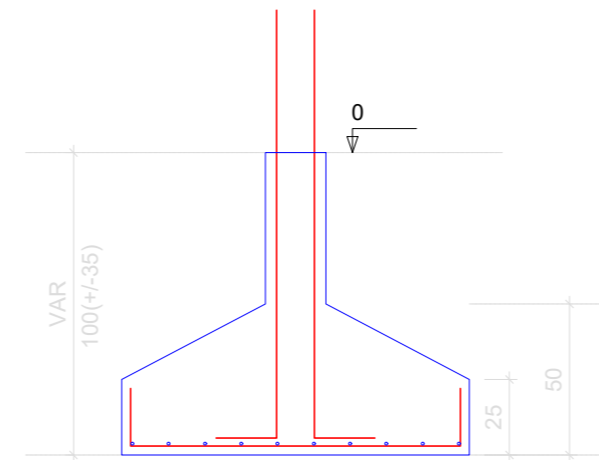
S2=S7=S14=S19

PLANTA  
ESC 1:25



Solo com capacidade de suporte > 2.50 kgf/cm<sup>2</sup>  
Solo compactado sobre a sapata  
peso específico > 1600.00 kgf/m<sup>3</sup>

CORTE  
ESC 1:25



Relação do aço

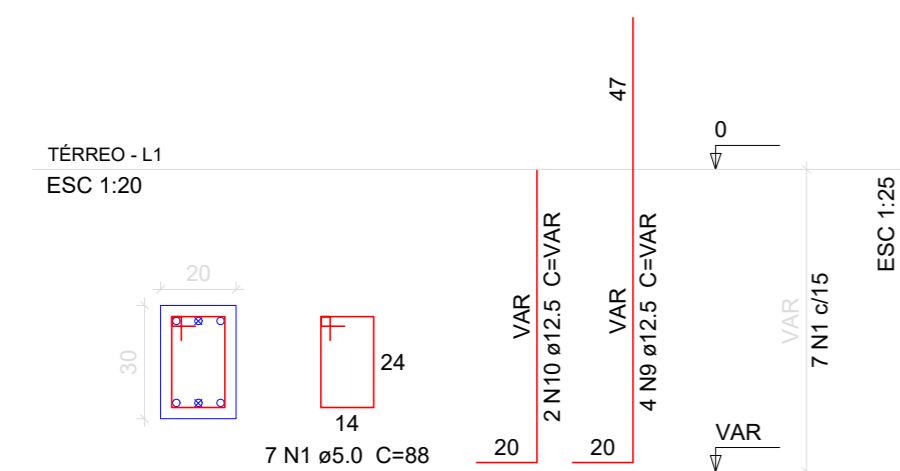
AÇO	N	DIAM	Q	4xS1 8xS15		C.TOTAL (cm)
				UNIT	C.TOTAL (cm)	
CA60	1	5.0	148	88	13024	
CA50	2	8.0	56	108	6048	
	3	8.0	40	128	5120	
	4	10.0	16	VAR	VAR	
	5	10.0	28	127	3556	
	6	10.0	80	142	11360	
CA60	7	10.0	104	152	15808	
	8	10.0	88	157	13816	
	9	12.5	64	VAR	VAR	
	10	12.5	24	VAR	VAR	

Resumo do aço

AÇO	DIAM	C.TOTAL (m)	PESO (kg)
CA50	8.0	111.7	44.1
	10.0	470.4	290
	12.5	132.4	127.5
CA60	5.0	130.3	20.1
PESO TOTAL			
CA50		461.5	
CA60		20.1	

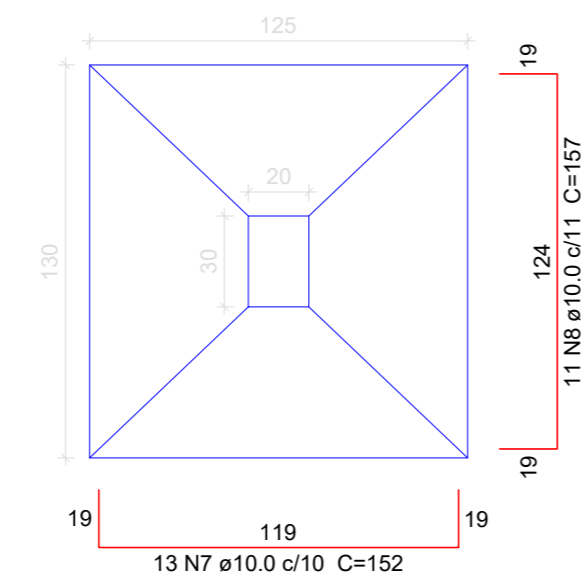
Vol. de concreto total (C-25) = 9.55 m<sup>3</sup>  
Área de forma total = 42.48 m<sup>2</sup>

P3=P4=P5=P6=P15=P16=P17=P18



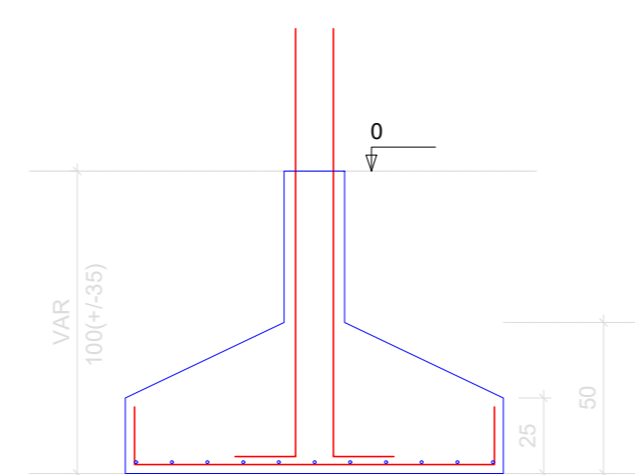
S3=S4=S5=S6=S15=S16=S17=S18

PLANTA  
ESC 1:25



Solo com capacidade de suporte > 2.50 kgf/cm<sup>2</sup>  
Solo compactado sobre a sapata  
peso específico > 1600.00 kgf/m<sup>3</sup>

CORTE  
ESC 1:25



**AMURES**  
PREFEITURA MUNICIPAL DE  
BOM JARDIM DA SERRA

**OBRA :** Galpão de Exposição  
**PRANCHA :** Planta de fundações e arranque dos pilares  
**PROJETO ESTRUTURAL**

---

**PROJETO:** \_\_\_\_\_ **PREFEITO:** \_\_\_\_\_  
**Eng. Civil David Pacheco Antunes CREA 125734-9** **Serginho Rodrigues de Oliveira**

---

**DESENHO :** Matheus Lorenzetti Casagrande **DATA:** 09/2019 **Fl.:** 02/08