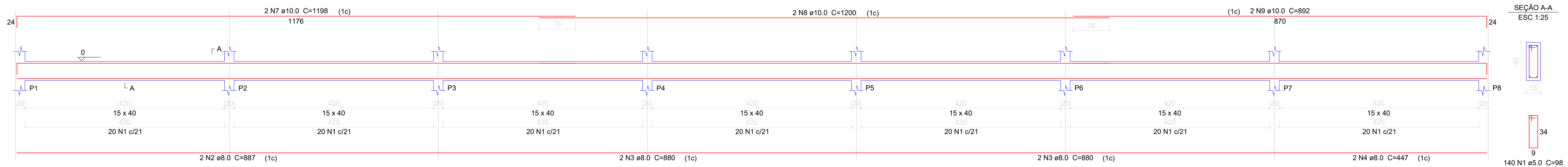
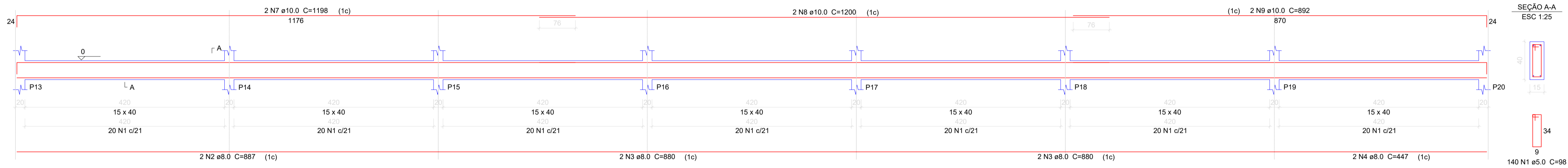


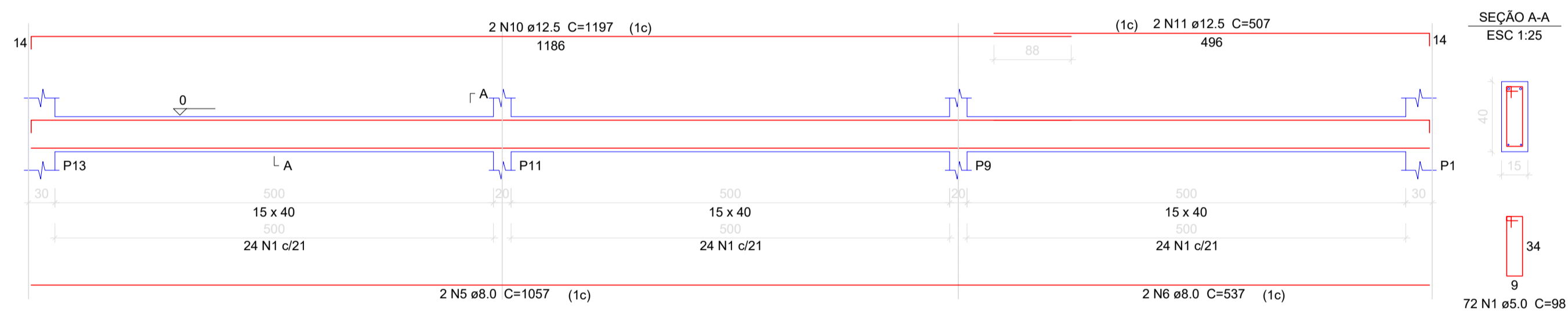
V1
ESC 1:50



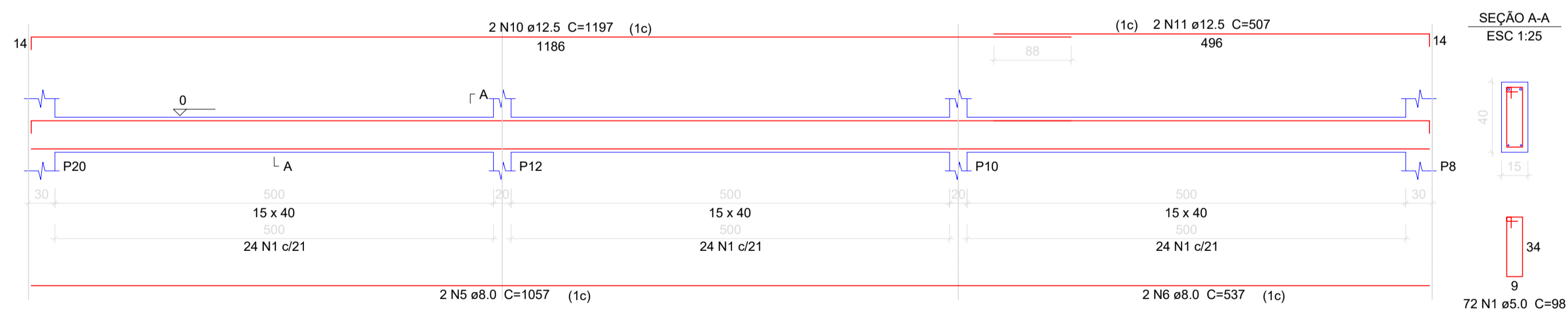
V2
ESC 1:50



V3
ESC 1:50



V4
ESC 1:50



Relação do aço

AÇO	N	DIAM	Q	UNIT (cm)	C.TOTAL (cm)
CA60	1	5.0	424	98	41552
CA50	2	8.0	4	887	3548
	3	8.0	8	880	7040
	4	8.0	4	447	1788
	5	8.0	4	1057	4228
	6	8.0	4	537	2148
	7	10.0	4	1198	4792
	8	10.0	4	1200	4800
	9	10.0	4	892	3568
	10	12.5	4	1197	4788
	11	12.5	4	507	2028

Resumo do aço

AÇO	DIAM	C.TOTAL (m)	PESO (kg)
CA50	8.0	187.6	73.3
	10.0	131.6	80.3
	12.5	68.2	65.0
CA60	5.0	415.6	63.5
PESO TOTAL			
CA50		218.6	
CA60		63.5	

Vol. de concreto total (C-25) = 5.64 m³
Área de forma total = 89.3 m²

AMURES
PREFEITURA MUNICIPAL DE
BOM JARDIM DA SERRA



OBRA: Galpão de Exposições
PRANCHA: Detalhamento das vigas baldramas - Pav. Térreo
PROJETO ESTRUTURAL

PROJETO:

Eng. Civil David Pacheco Antunes CREA 125734-9

PREFEITO:

Serginho Rodrigues de Oliveira

DESENHO: Matheus Lorenzetti Casagrande

DATA: 09/2019 **Fl.:** 04/08