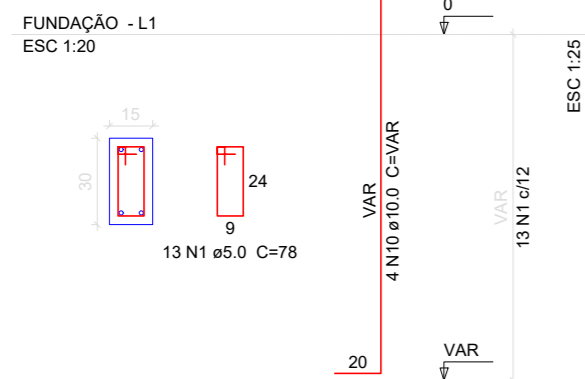
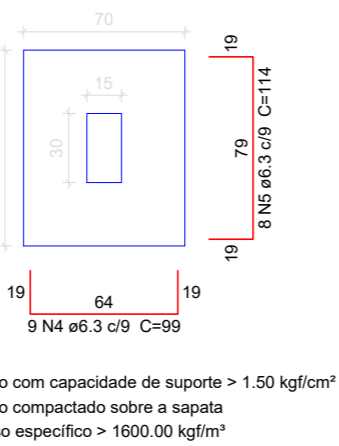


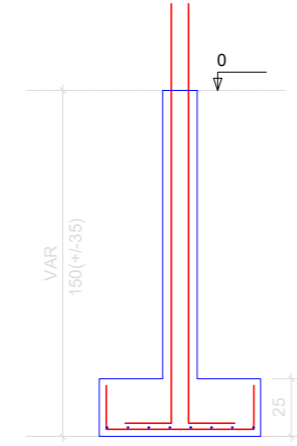
P1=P3=P5=P9=P10=P12



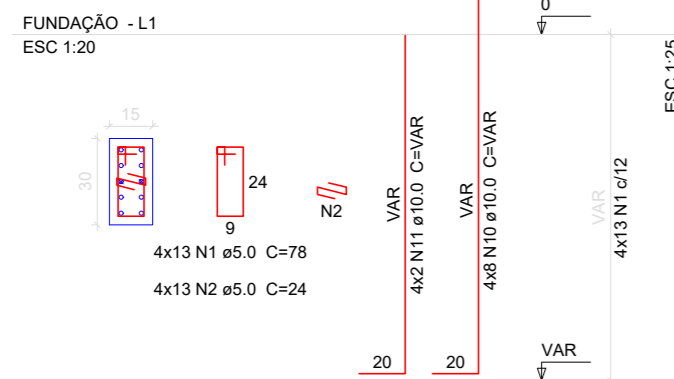
S1=S3=S5=S9=S10=S12
PLANTA
ESC 1:25



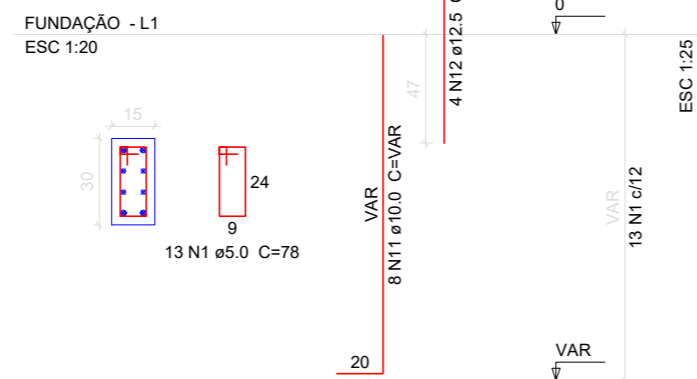
CORTE
ESC 1:25



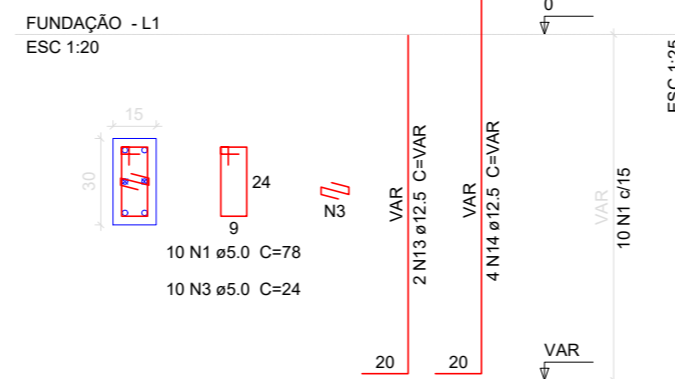
P2=P4=P11=P13



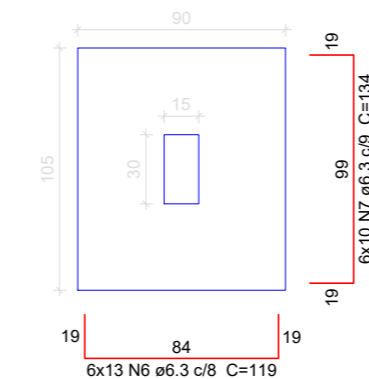
P6



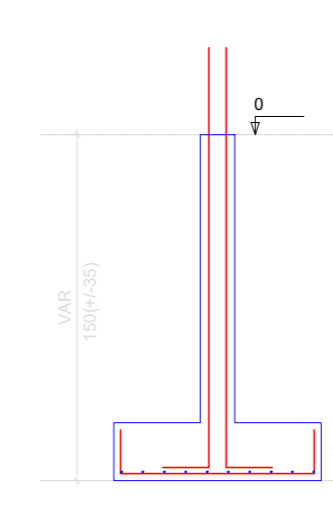
P8



S2=S4=S6=S8=S11=S13
PLANTA
ESC 1:25



CORTE
ESC 1:25



Relação do aço

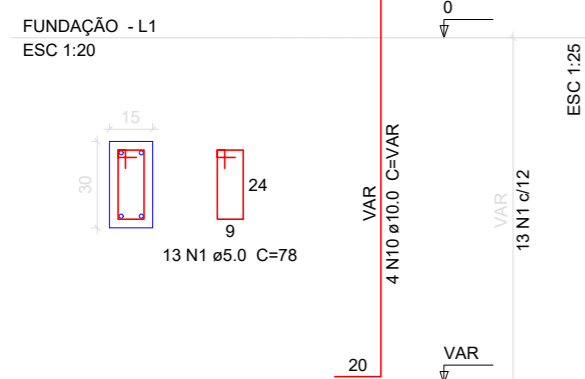
6xS1	S7	S11			
AÇO	N	DIAM	Q	UNIT	C.TOTAL
		(cm)		(cm)	(cm)
CA60	1	5.0	166	78	12948
	2	5.0	52	24	1248
	3	5.0	10	24	240
CA50	4	6.3	54	99	5346
	5	6.3	48	114	5472
	6	6.3	78	119	9282
	7	6.3	60	134	8040
	8	6.3	12	129	1548
	9	8.0	9	113	1017
	10	10.0	60	VAR	VAR
	11	10.0	16	VAR	VAR
	12	12.5	4	94	376
	13	12.5	2	VAR	VAR
	14	12.5	4	VAR	VAR

Resumo do aço

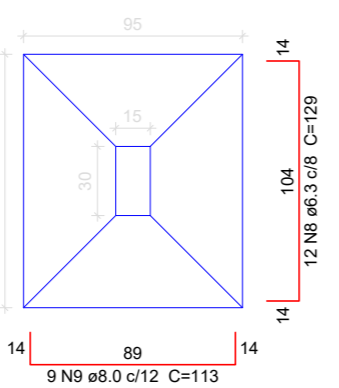
AÇO	DIAM	C.TOTAL	PESO + 10 %
		(m)	(kg)
CA50	6.3	296.9	79.9
	8.0	10.2	4.4
	10.0	150	101.7
	12.5	15.6	16.5
CA60	5.0	144.4	24.5
PESO TOTAL			
CA50		202.6	
CA60		24.5	

Vol. de concreto total (C-25) = 3.44 m³
Área de forma total = 28.87 m²

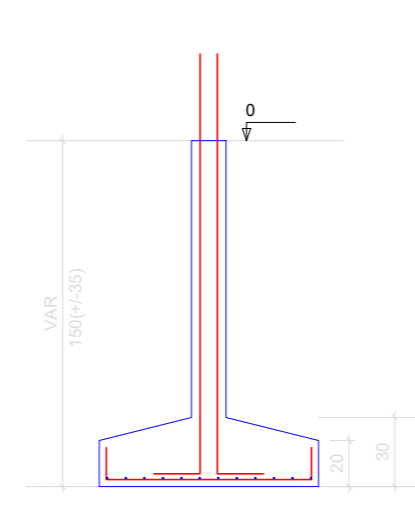
P7



S7
PLANTA
ESC 1:25



CORTE
ESC 1:25



AMURES



ASSOCIAÇÃO DE MUNICÍPIOS
DA REGIÃO SERRANA

PREFEITURA MUNICIPAL DE
BOM JARDIM DA SERRA - SC

7

ASSESSORIA TÉCNICA

OBRA :

PROJETO: Indiamara de Oliveira Ribeiro
Eng. Civil - CREA 13.4548-3

Projeto Estrutural
Escola Alto da Boa Vista

Detalhamento das Fundações

PREFEITO: Serginho Rodrigues de Oliveira

Área total: 94,50 m²

DESENHO : Indiamara de Oliveira Ribeiro

Escala: Indicada

DATA : 08/2020