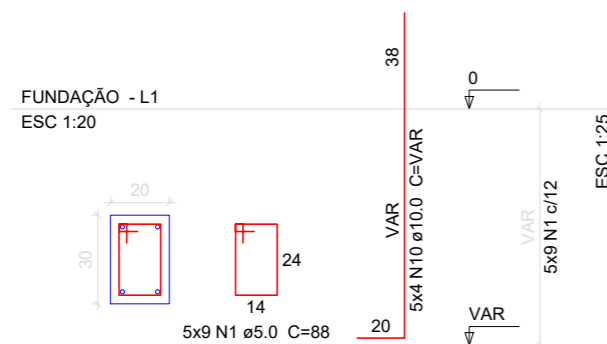
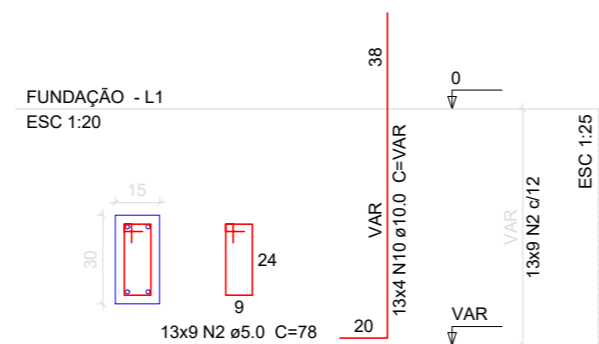


P2=P5=P11=P18=P20

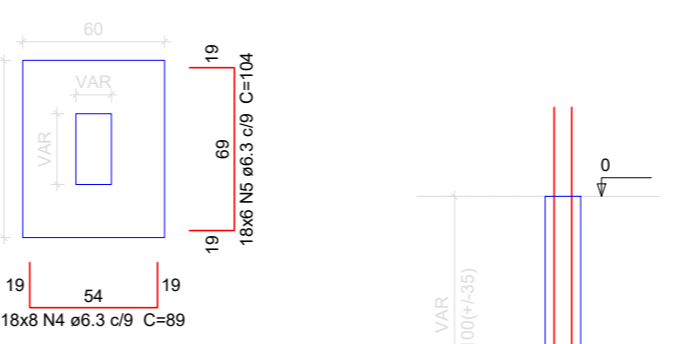


P1=P3=P4=P6=P9=P12=P13=P14=P15=P16=P17=P21=P22



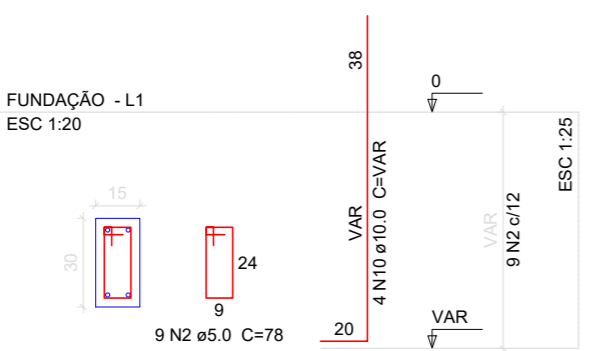
S1=S2=S3=S4=S5=S6=S9=S11=S12=S13=S14=S15=S16=S17=S18=S20=S21=S22

PLANTA ESC 1:25 CORTE ESC 1:25

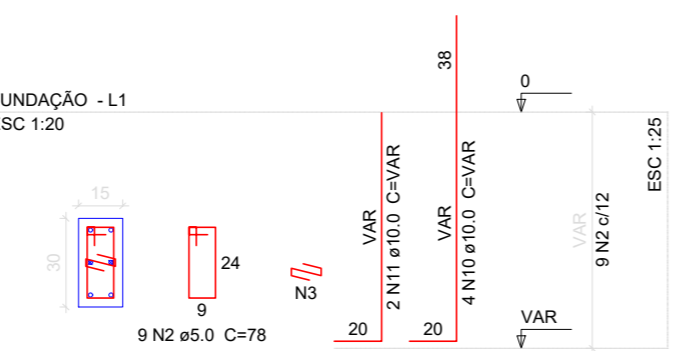


Solo com capacidade de suporte > 2.50 kgf/cm²
Solo compactado sobre a sapata
peso específico > 1600.00 kg/m³

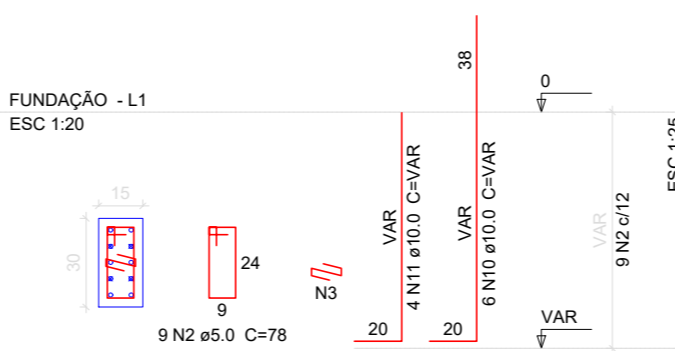
P10



P19

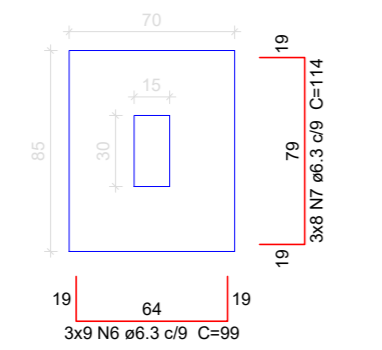


P7

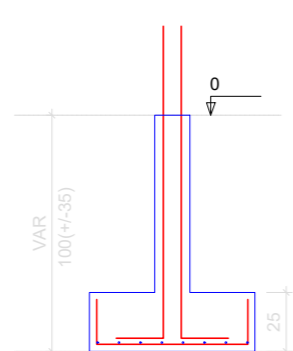


S7=S10=S19

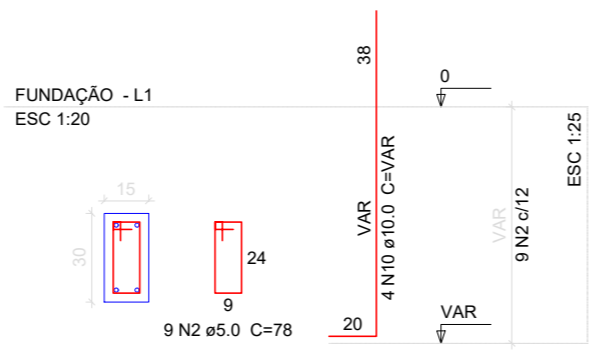
PLANTA ESC 1:25 CORTE ESC 1:25



Solo com capacidade de suporte > 2.50 kgf/cm²
Solo compactado sobre a sapata
peso específico > 1600.00 kg/m³

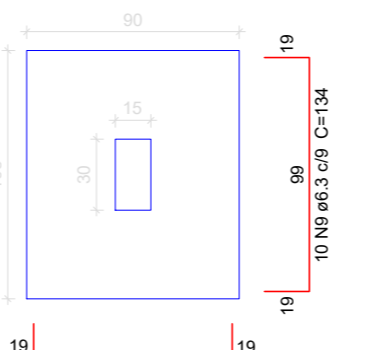


P8

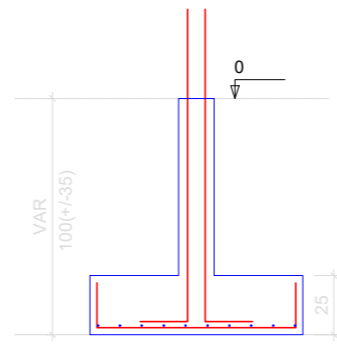


S8

PLANTA ESC 1:25 CORTE ESC 1:25



Solo com capacidade de suporte > 2.50 kgf/cm²
Solo compactado sobre a sapata
peso específico > 1600.00 kg/m³



Relação do aço

AÇO	N	DIAM	Q	UNIT (cm)	C.TOTAL (cm)
CA60	1	5.0	45	88	3960
	2	5.0	153	78	11934
	3	5.0	18	24	432
CA50	4	6.3	144	89	12816
	5	6.3	108	104	11232
	6	6.3	27	99	2673
	7	6.3	24	114	2736
	8	6.3	13	119	1547
	9	6.3	10	134	1340
	10	10.0	90	VAR	VAR
	11	10.0	6	VAR	VAR

Resumo do aço

AÇO	DIAM	C.TOTAL (m)	PESO + 10% (kg)
CA50	6.3	323.5	87.1
CA60	10.0	147.3	99.9
CA60	5.0	163.3	27.7
PESO TOTAL			
CA50			187
CA60			27.7

Vol. de concreto total (C-25) = 3.77 m³
Área de forma total = 35.75 m²

AMURES



ASSOCIAÇÃO DE MUNICÍPIOS DA REGIÃO SERRANA

PREFEITURA MUNICIPAL DE BOM JARDIM DA SERRA - SC

7

ASSESSORIA TÉCNICA

OBRA:

PROJETO: Indiamara de Oliveira Ribeiro
Eng. Civil - CREA 13.4548-3

Projeto Estrutural
Escola São Gerônimo

Detalhamento das Fundações

PREFEITO: Serginho Rodrigues de Oliveira

Área total: 139,36 m²

DESENHO: Indiamara de Oliveira Ribeiro

Escala: Indicada

DATA: 08/2020