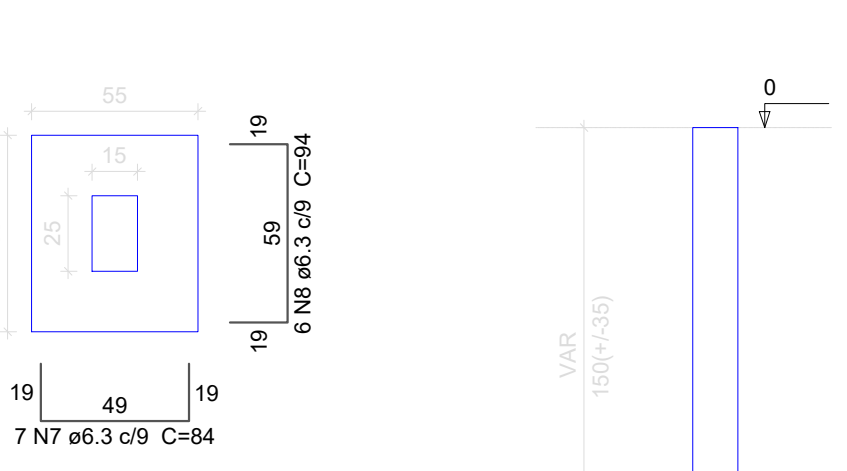


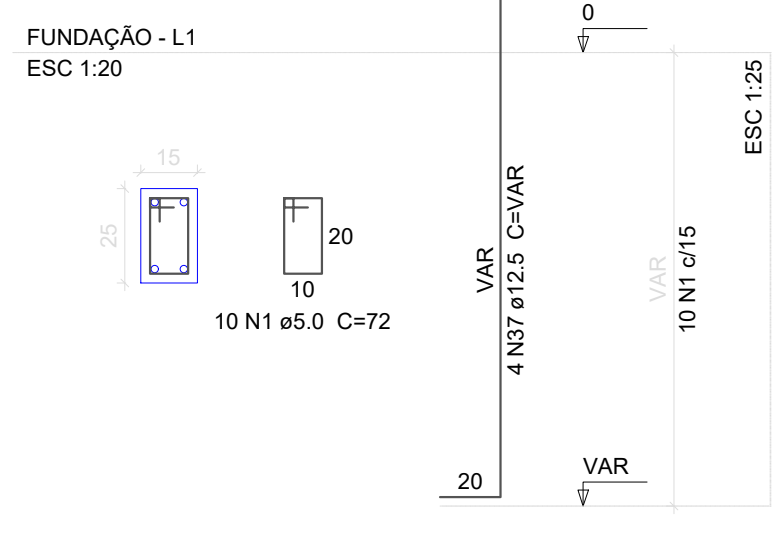
S1=S2=S3=S4=S5=S6=S7=S8=S9=S10=S11=S12
 =S13=S14=S15=S16=S17=S18=S19=S20=S21
 =S22=S23=S24=S25=S26=S27=S28=S29=S30
 =S31=S32=S33=S34=S35=S36

PLANTA ESC 1:25 CORTE ESC 1:25

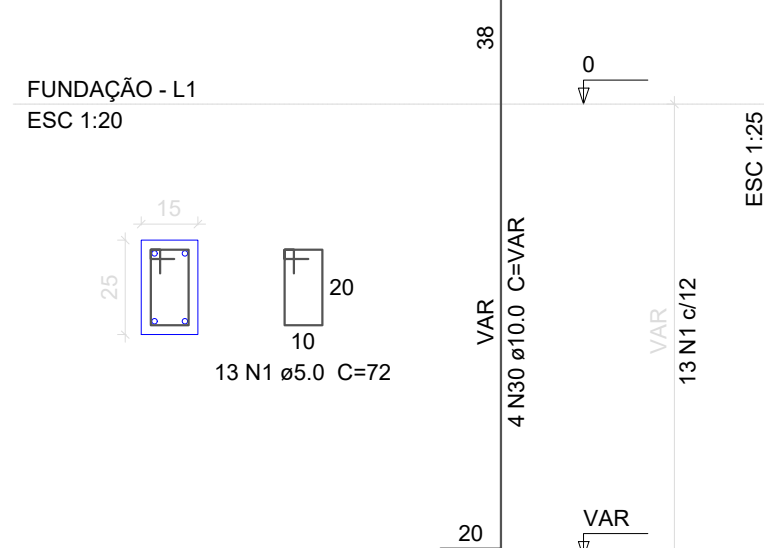


Solo com capacidade de suporte > 2.50 kgf/cm²
 Solo compactado sobre a sapata
 peso específico > 2000.00 kgfm³

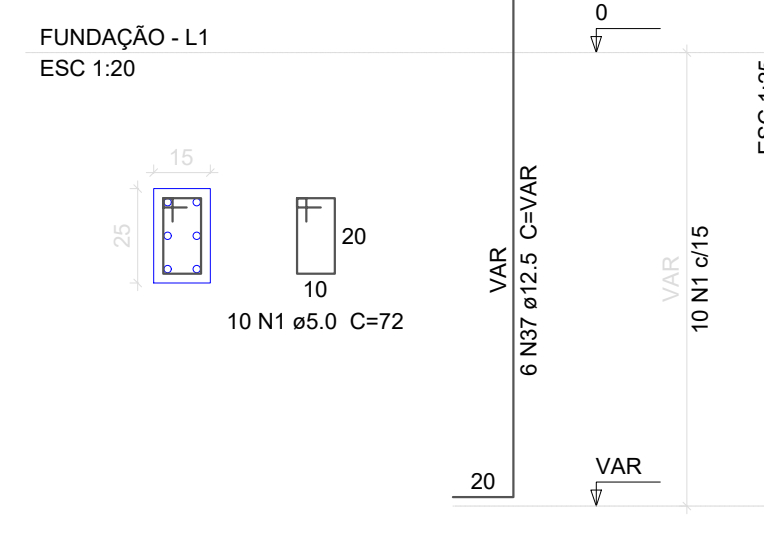
P1



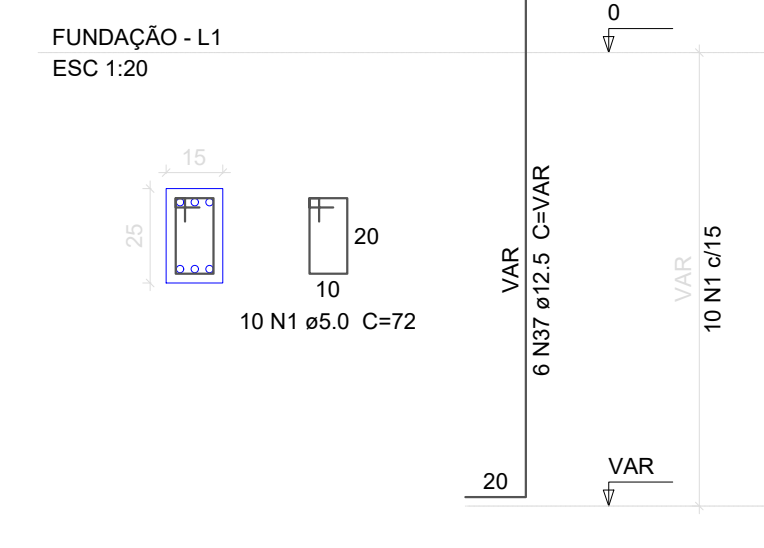
P2=P3=P8=P10=P11=P12=P13=P15=P16=P21
 =P22=P23=P25=P26=P27=P28=P33=P34=P35
 =P36



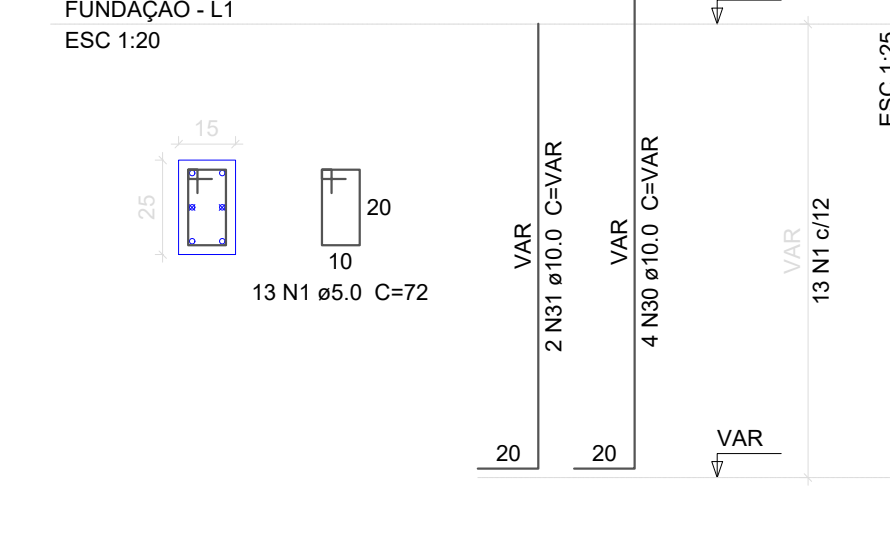
P4=P9



P5



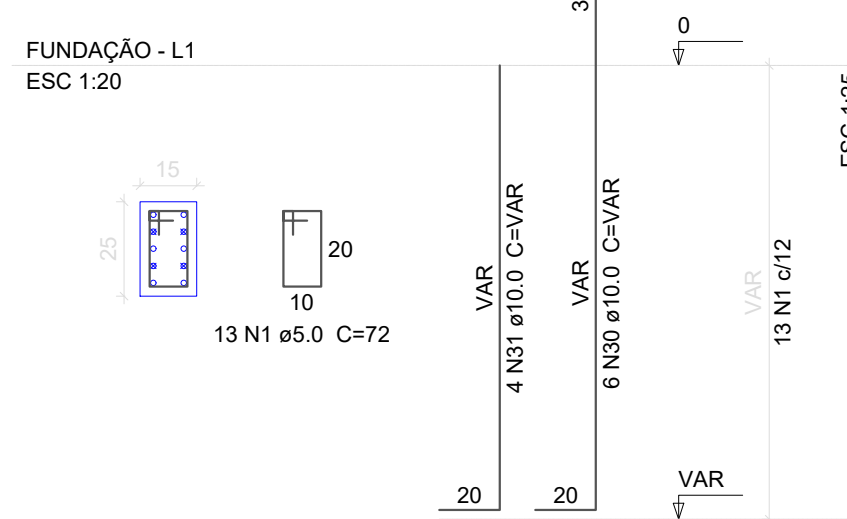
P6=P14=P17=P19



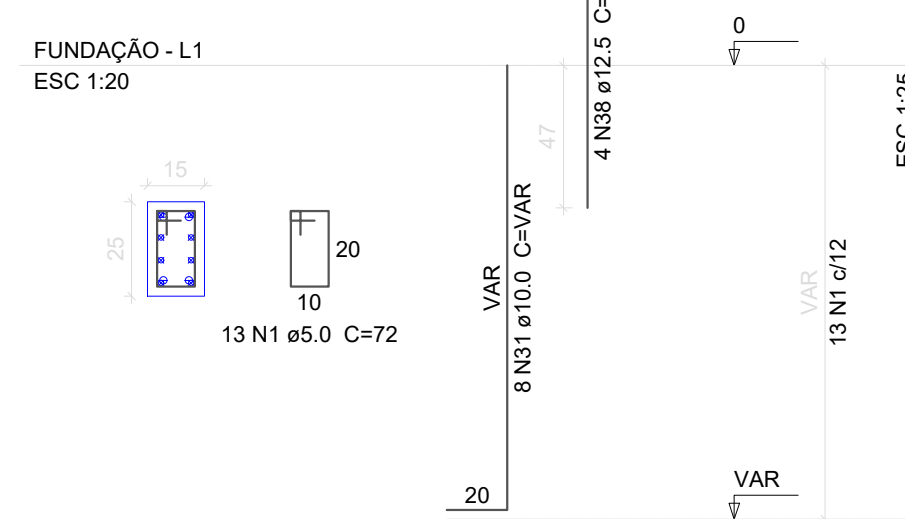
Relação do aço

ACO	N	DIAM	Q	UNIT	C.TOTAL
		(cm)		(cm)	
CA60	1	5.0	521	72	37512
	2	5.0	453	56	25368
	3	5.0	98	66	6468
	4	5.0	2	220	440
	5	5.0	2	295	590
	6	5.0	2	179	358
	7	6.3	252	84	21168
	8	6.3	216	94	20304
	9	8.0	2	223	446
	10	8.0	2	310	620
	11	8.0	2	661	1322
	12	8.0	2	220	440
	13	8.0	2	225	450
	14	8.0	1	237	237
	15	8.0	2	246	492
	16	8.0	2	558	1116
	17	8.0	2	770	1540
	18	8.0	1	502	502
	19	8.0	2	806	1612
	20	8.0	2	655	1310
	21	8.0	2	195	390
	22	8.0	2	193	386
	23	8.0	2	247	494
	24	8.0	2	620	1240
	25	8.0	2	187	374
	26	8.0	1	165	165
	27	8.0	2	410	820
	28	8.0	1	118	118
	29	8.0	3	426	1278
	30	10.0	118	VAR	VAR
	31	10.0	44	VAR	VAR
	32	10.0	2	353	706
	33	10.0	1	449	449
	34	10.0	2	599	1198
	35	10.0	2	778	1556
	36	10.0	2	453	906
	37	12.5	22	VAR	VAR
	38	12.5	14	94	1316
	39	12.5	4	196	784
	40	12.5	2	717	1434
	41	12.5	1	168	168
	42	12.5	1	215	215
	43	12.5	2	1197	2394
	44	12.5	2	238	476
	45	12.5	1	225	225
	46	12.5	2	637	1274
	47	16.0	8	121	968
	48	16.0	1	270	270
	49	16.0	2	461	922

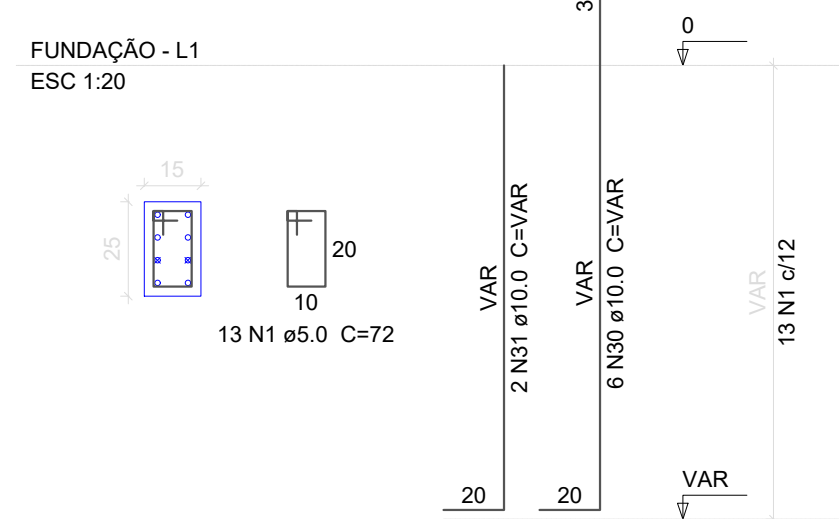
P7



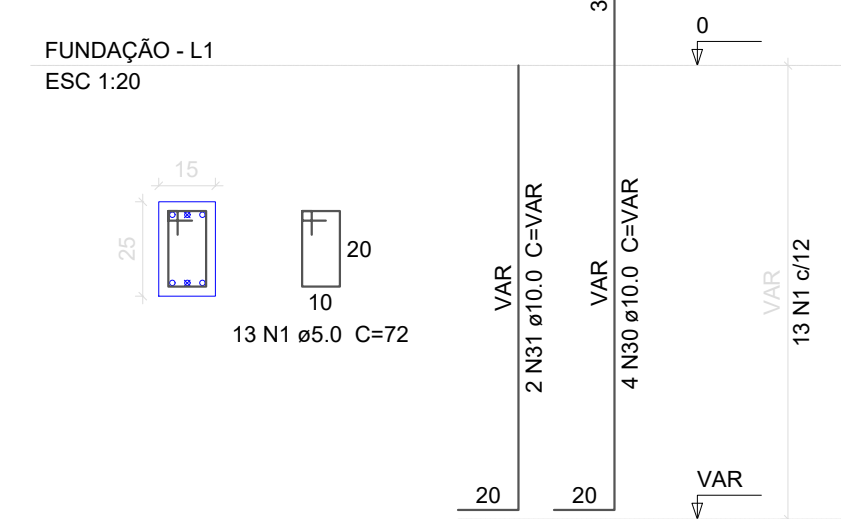
P18



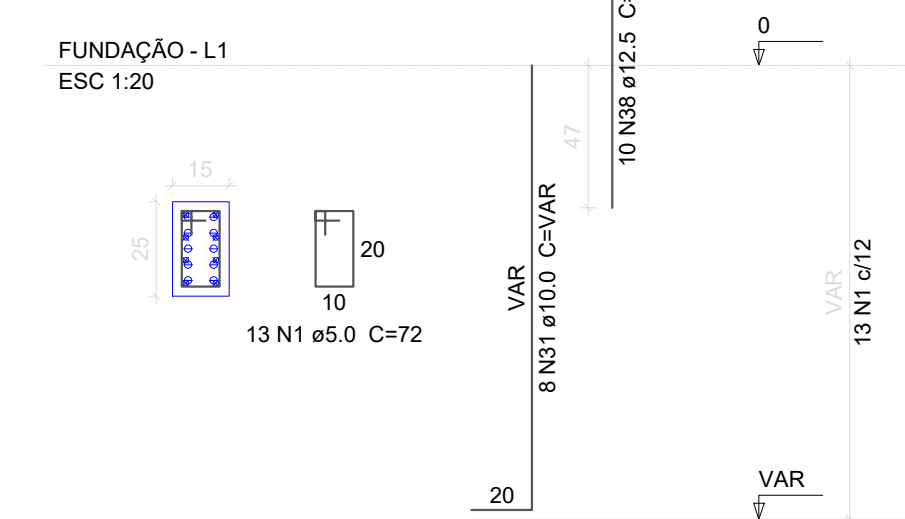
P20=P29



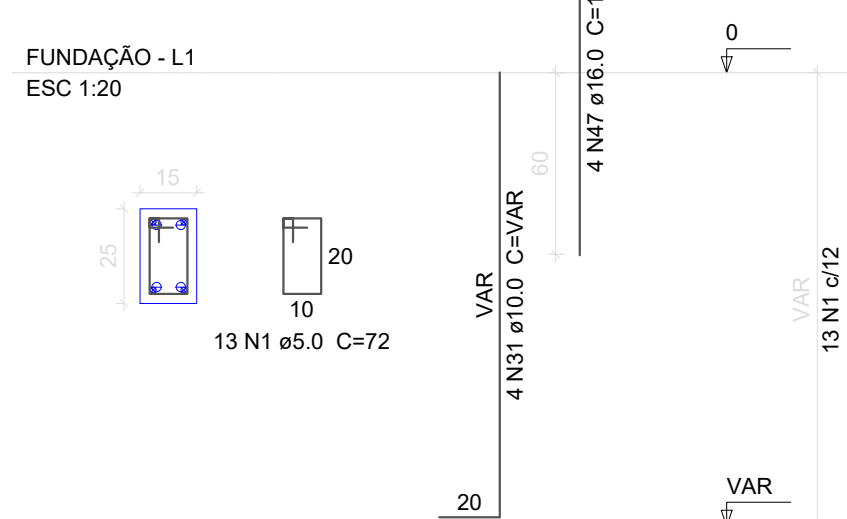
P24



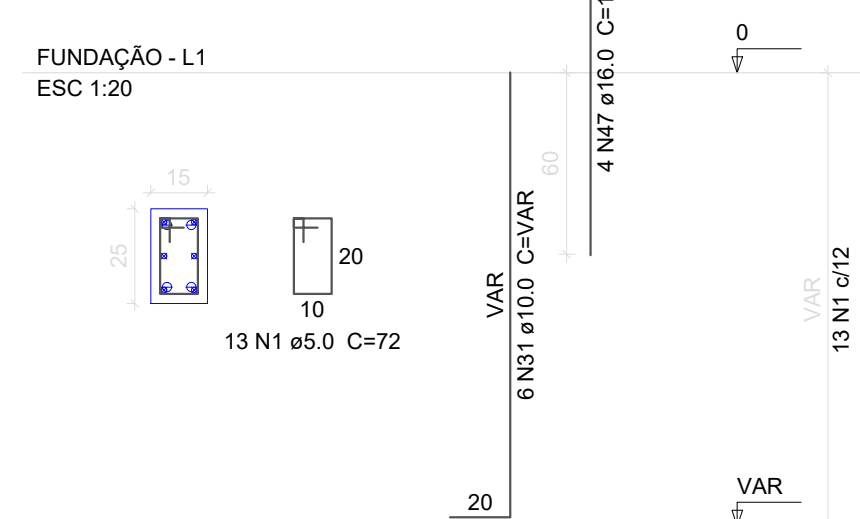
P30



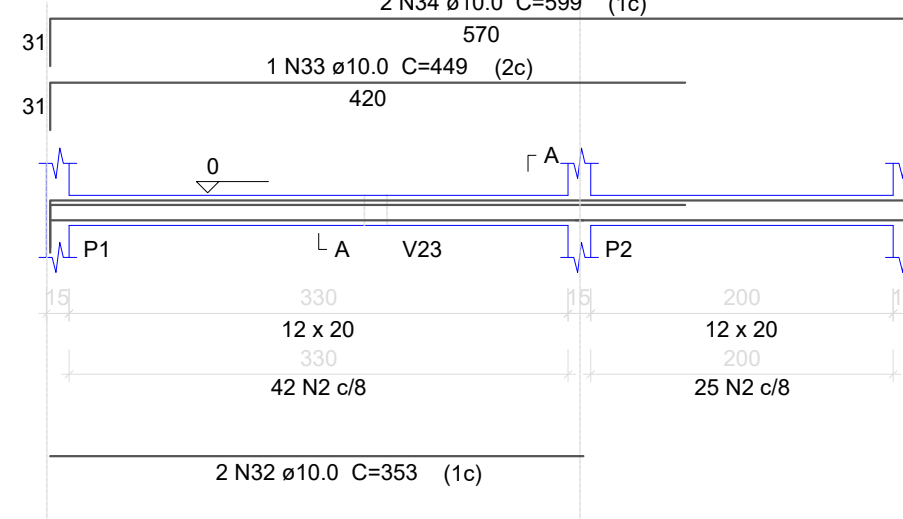
P31



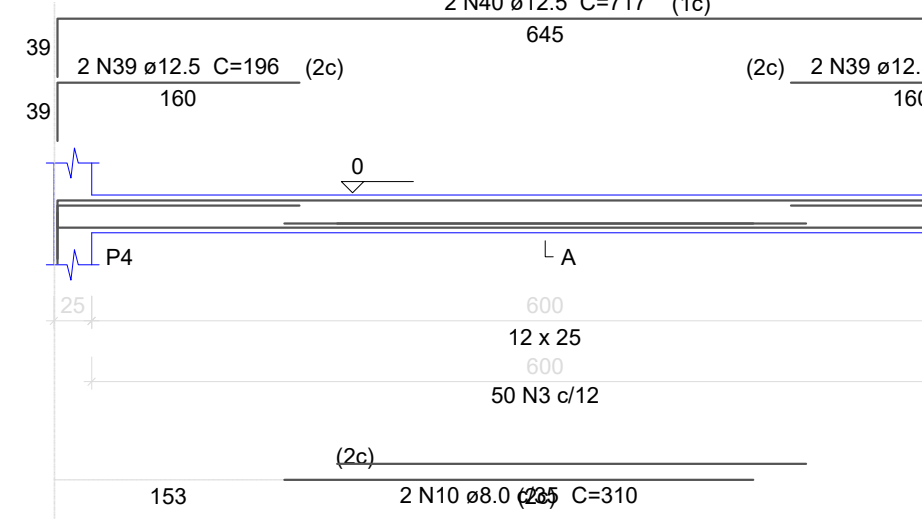
P32



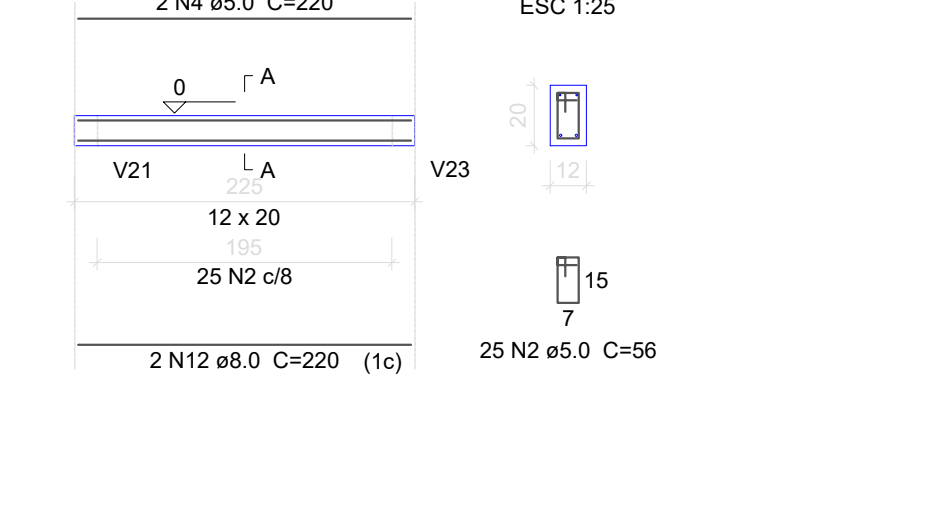
V1



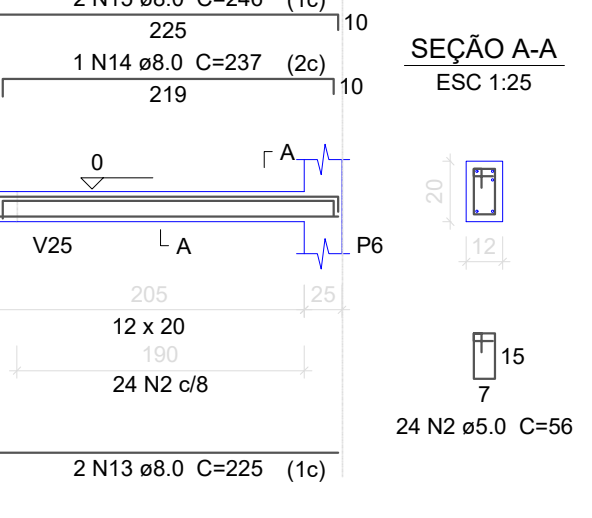
V2



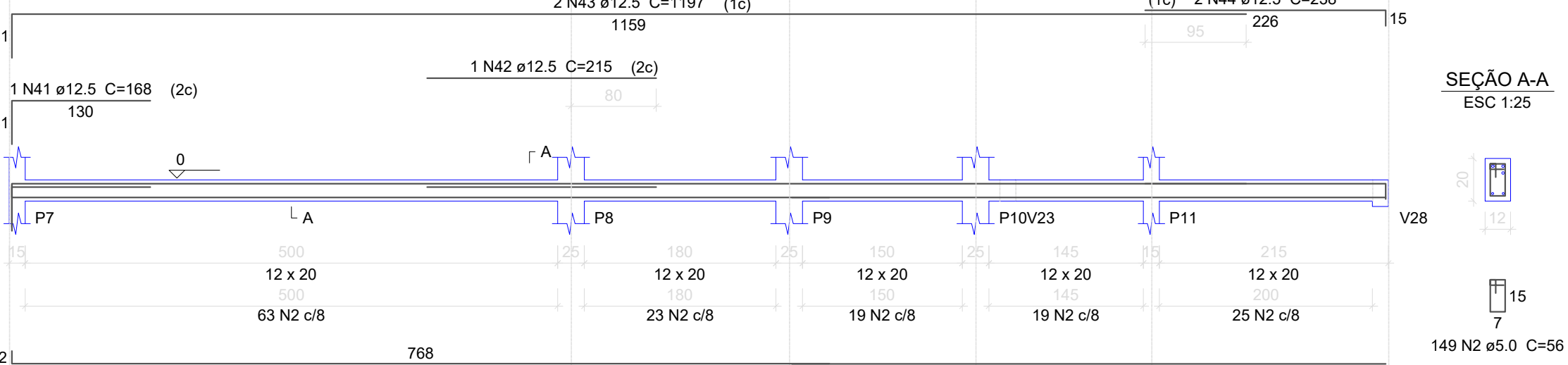
V3



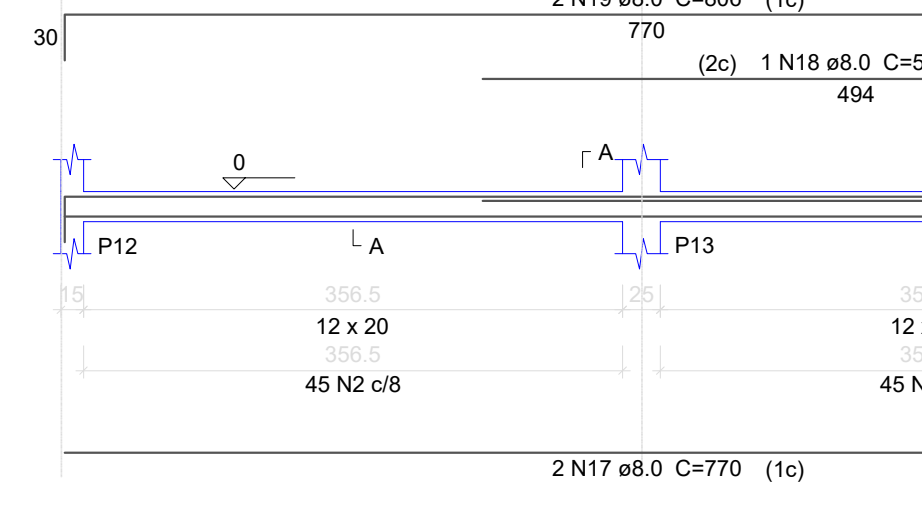
V4



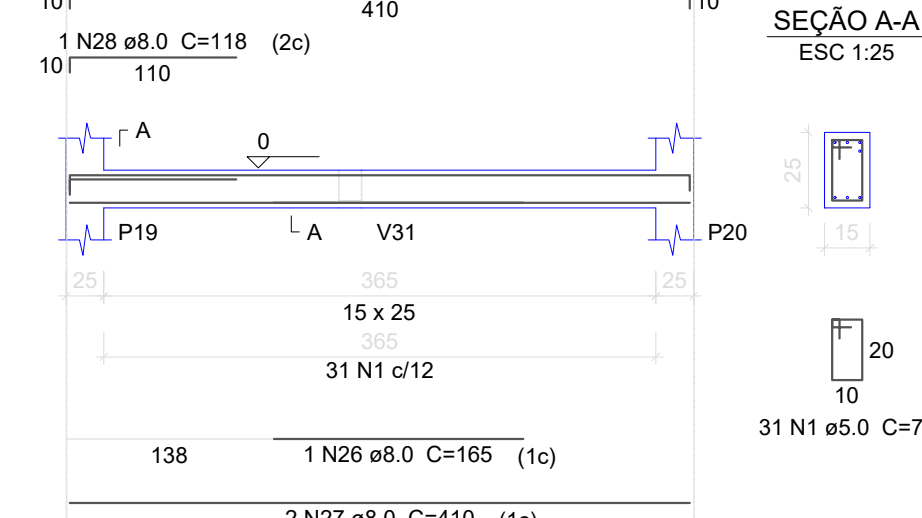
V5



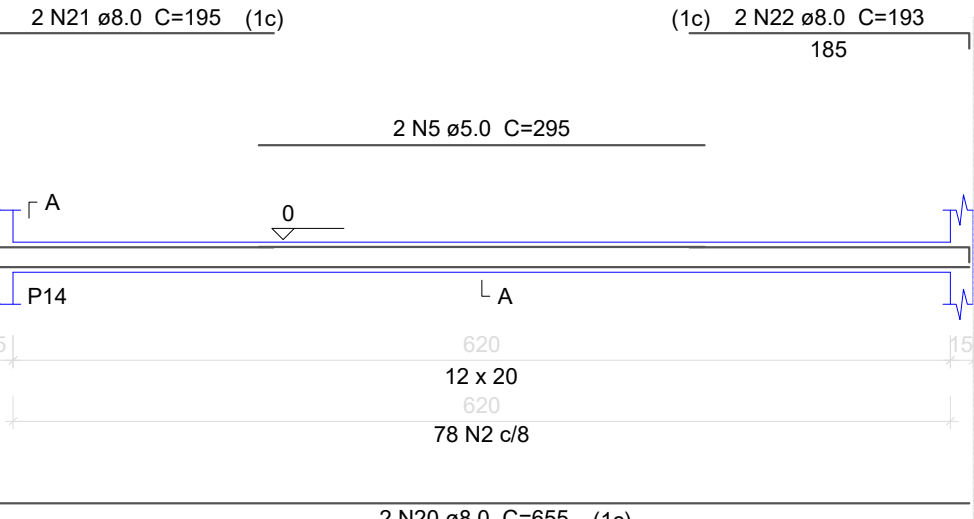
V6



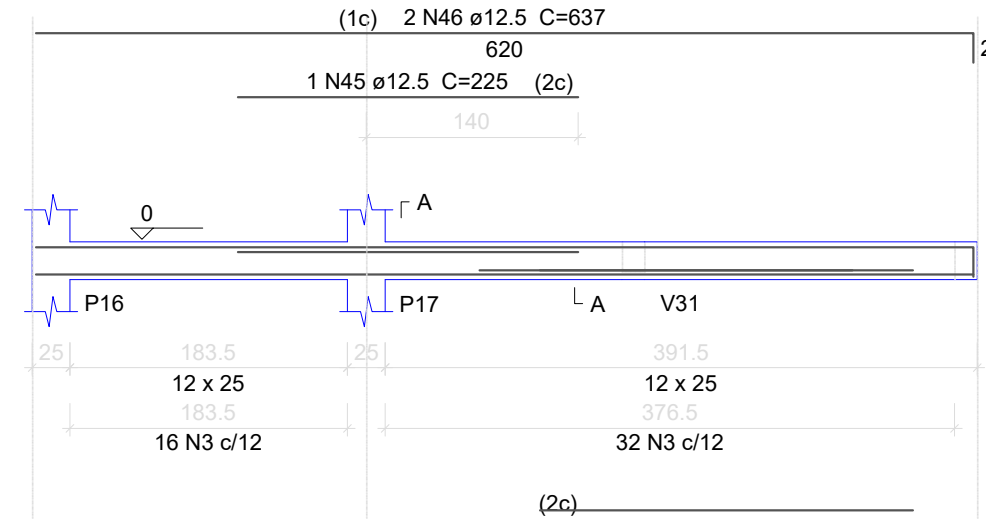
V11



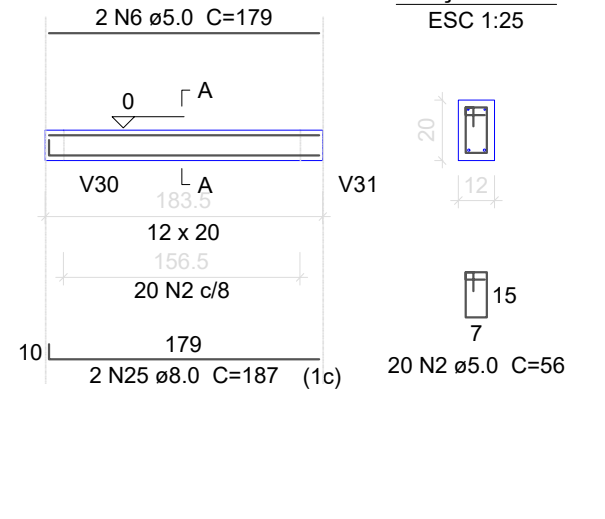
V7



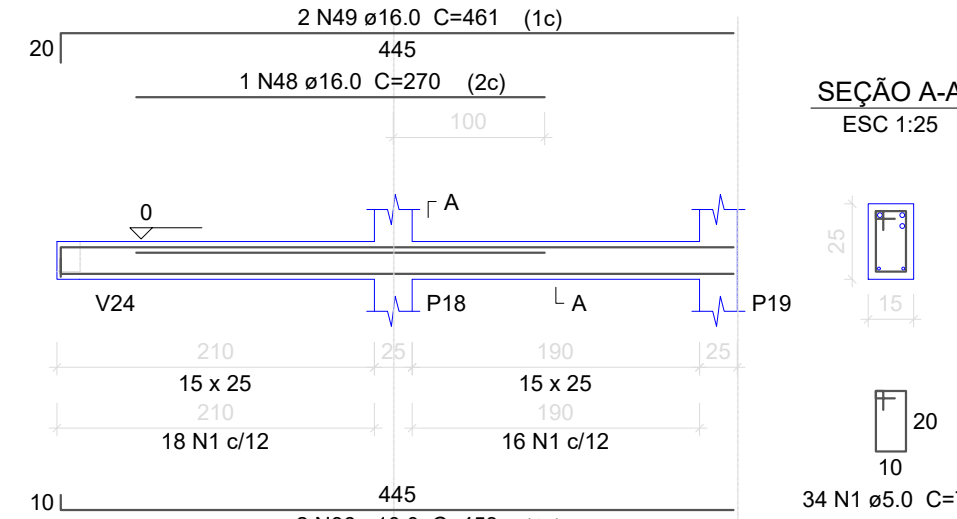
V8



V9



V10



Resumo do aço

ACO	DIAM	C.TOTAL	PESO + 10 %
	(m)	(kg)	(kg)
CA50	6.3	414.8	111.6
	8.0	153.6	66.6
	10.0	363.9	246.7
	12.5	130	137.7
	16.0	21.6	37.5
	6.0	707.4	119.9
CA60			
CA50	600.2		
CA60	119.9		

Vol. de concreto total (C-25) = 6.9 m³
 Área de forma total = 98.83 m²

QUADRO DE ÁREAS:	OBRA:
Projeto 420,69m ²	CENTRO DE APOIO AO PRODUTOR
	ENDEREÇO:
	Avenida Henrique H. Velho Cordova, S/N, BAIRRO COHAB Bom Jardim da Serra - SC

RESP. TÉCNICO:
Eng. Civil Jorge E. Batista Muniz
CREA-SC 143378-1
PROPRIETÁRIO:
Prefeitura Municipal de Bom Jardim da Serra
CNPJ: 82.844.754/0001-82

DESCRICAÇÃO:	PRANCHA:			
PROJETO ESTRUTURAL	4/9			
FUNDAÇÃO				
PILARES				
VIGAS				
ESCALA:	ÁREA TOTAL:	DATA:	FORMATO PRANCHA:	REVISÃO:
INDICADA	420,69m ²	FEVEREIRO/2022	A1(841X594mm)	JEBM-16/02/22