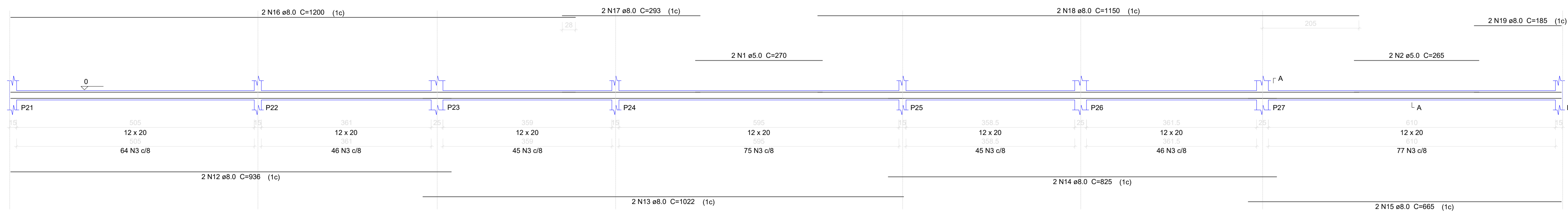
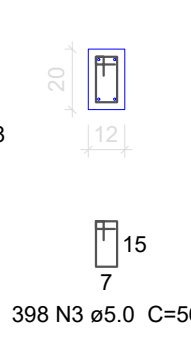


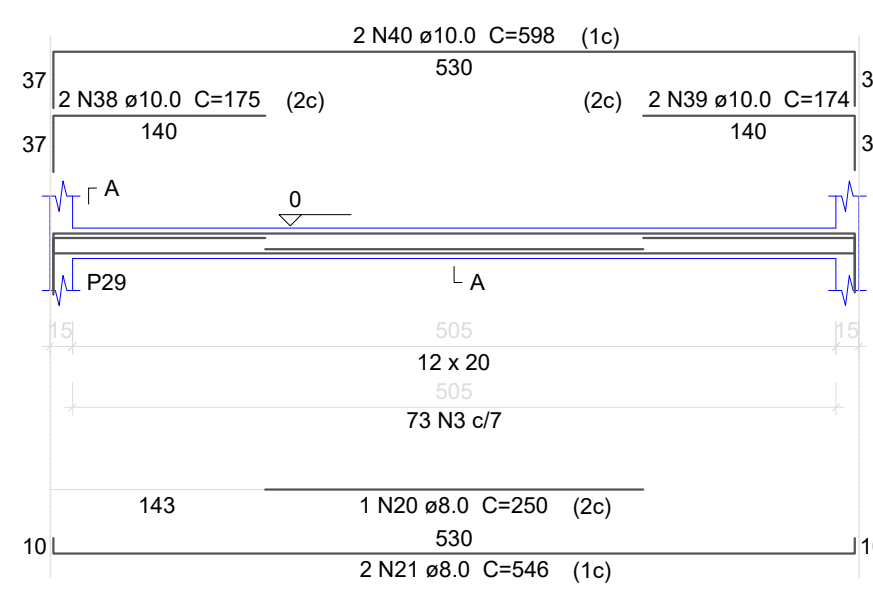
V12
ESC 1:50



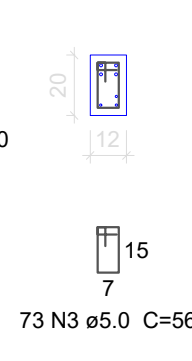
SEÇÃO A-A
ESC 1:25



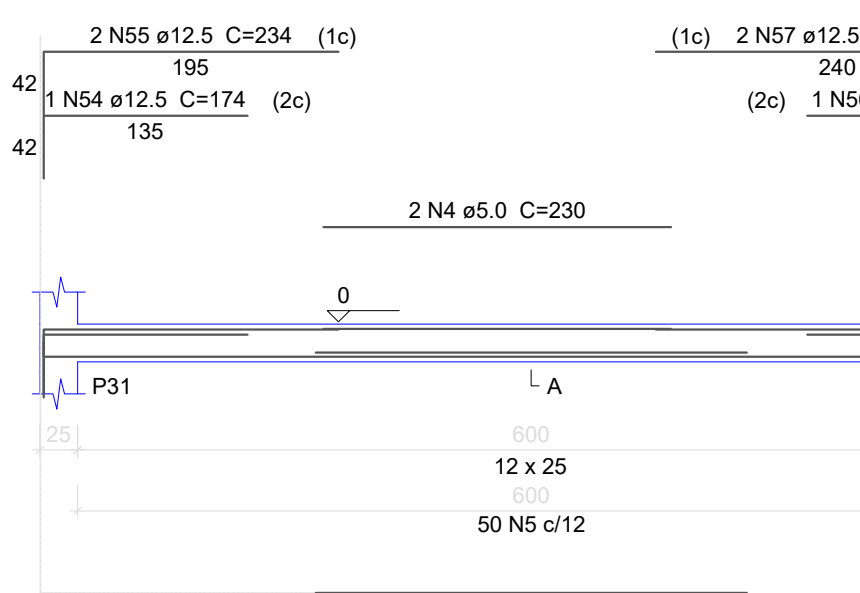
V13
ESC 1:50



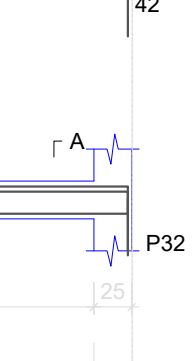
SEÇÃO A-A
ESC 1:25



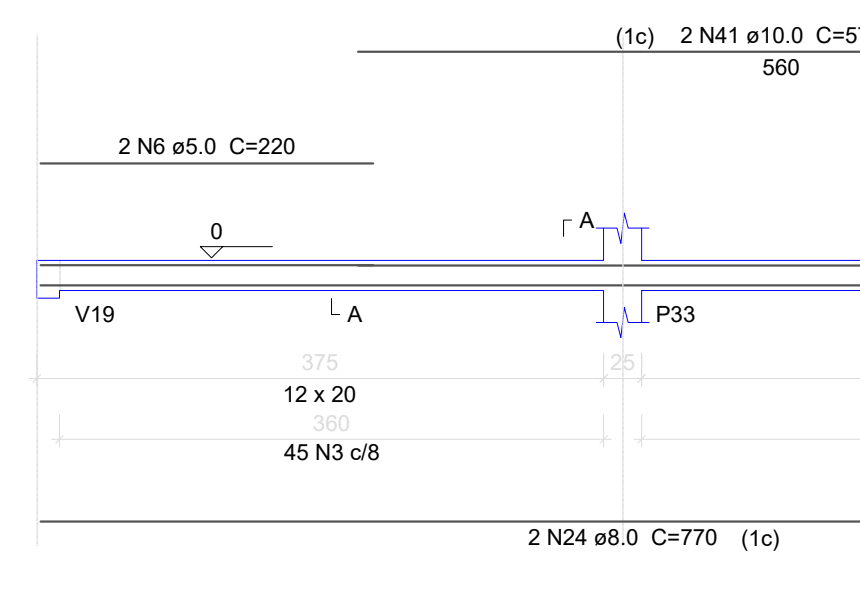
V14
ESC 1:50



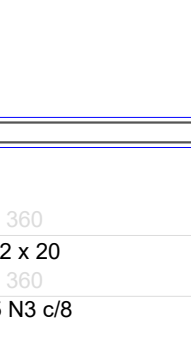
SEÇÃO A-A
ESC 1:25



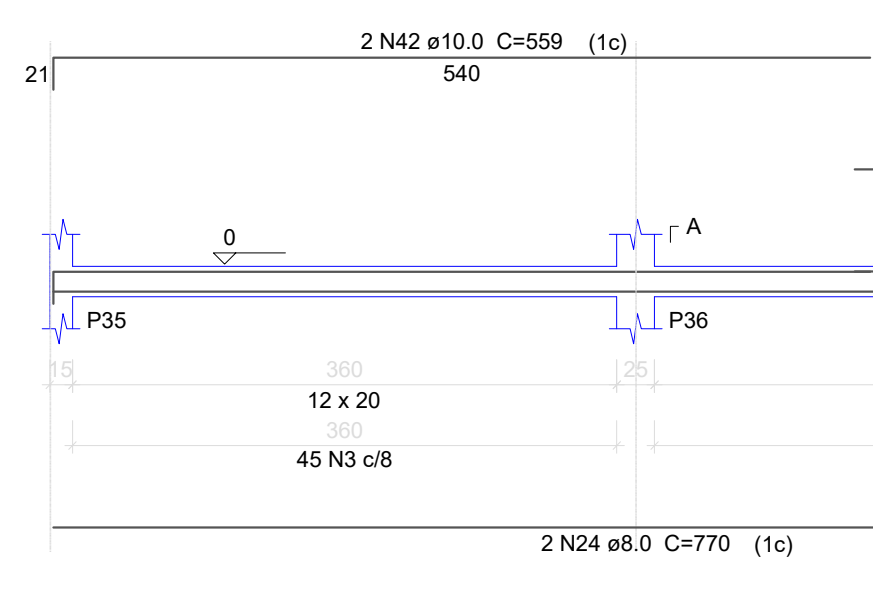
V15
ESC 1:50



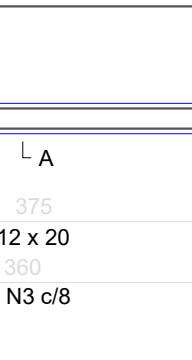
SEÇÃO A-A
ESC 1:25



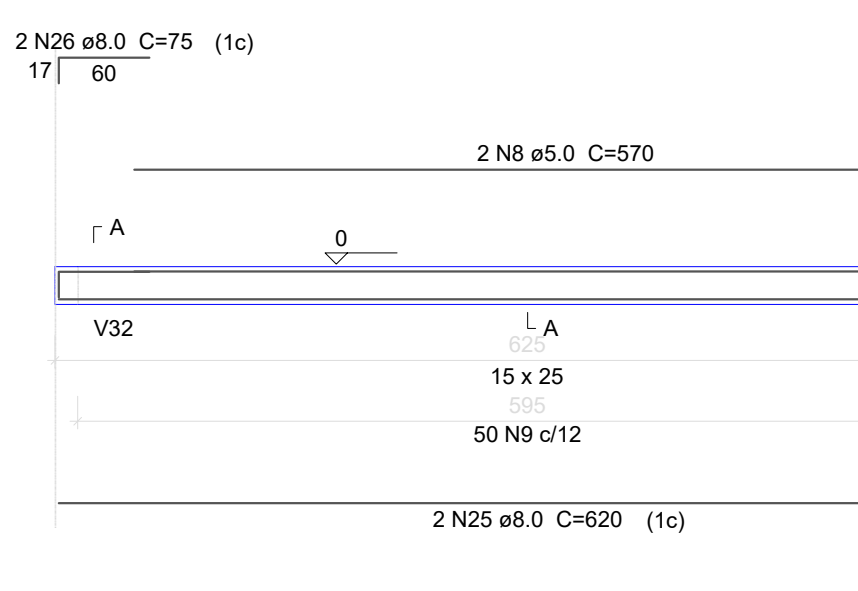
V16
ESC 1:50



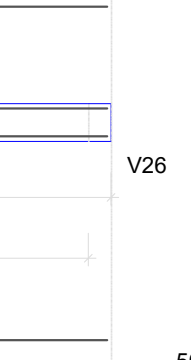
SEÇÃO A-A
ESC 1:25



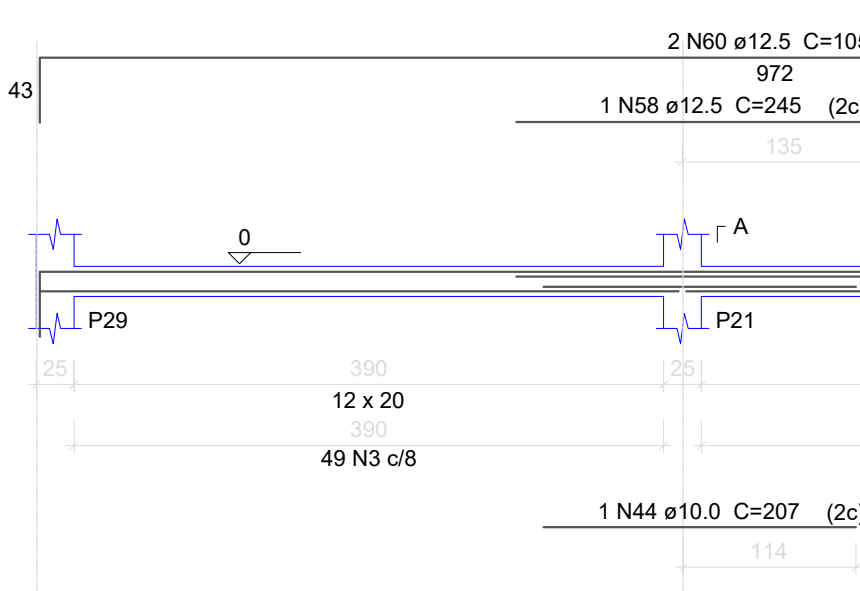
V17
ESC 1:50



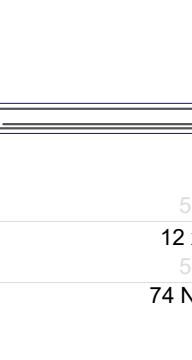
SEÇÃO A-A
ESC 1:25



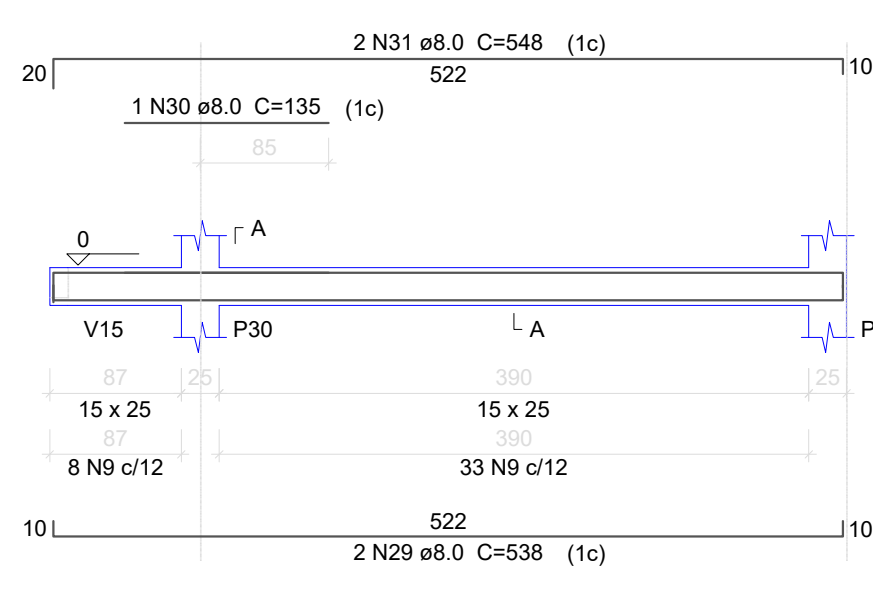
V18
ESC 1:50



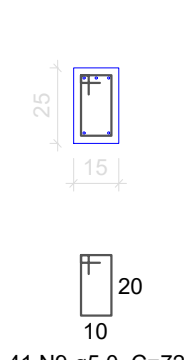
SEÇÃO A-A
ESC 1:25



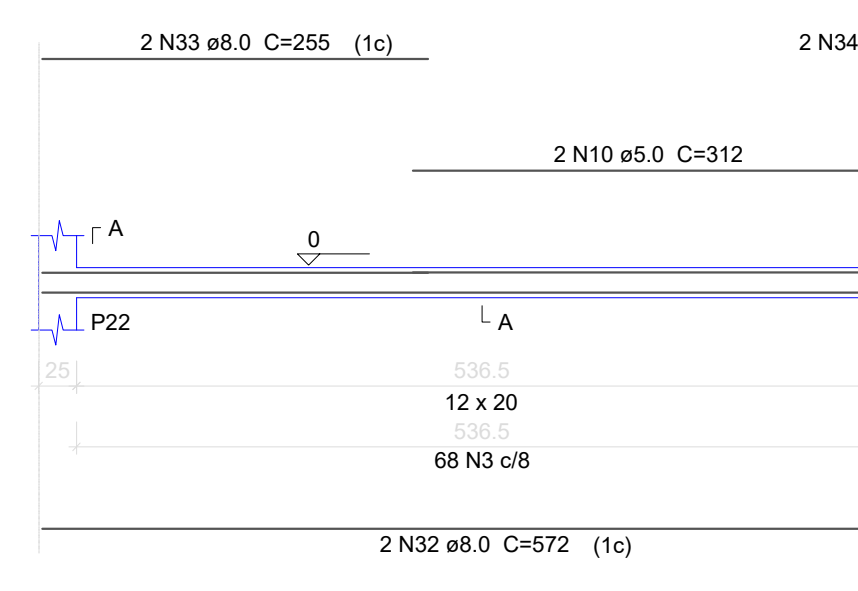
V19
ESC 1:50



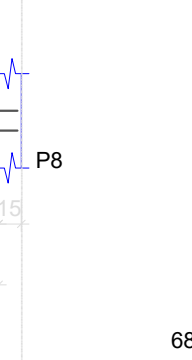
SEÇÃO A-A
ESC 1:25



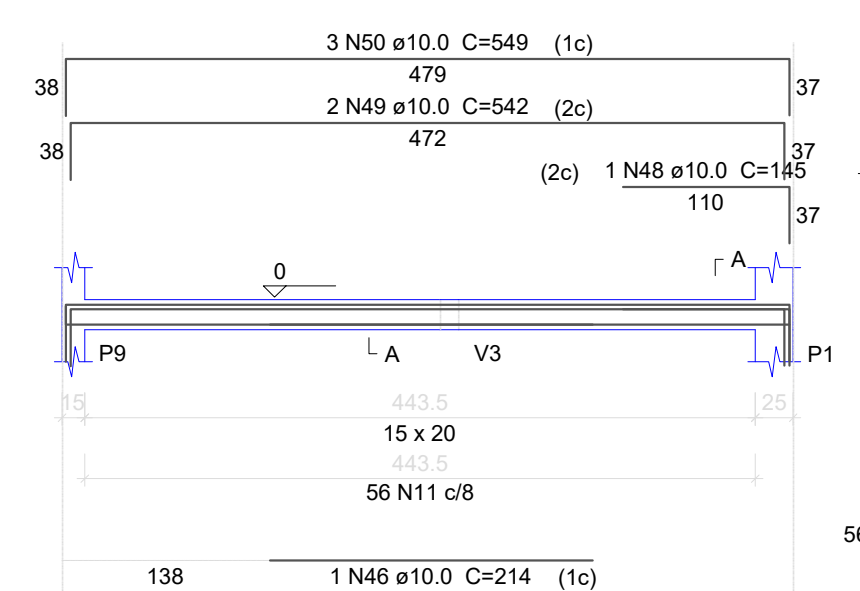
V20
ESC 1:50



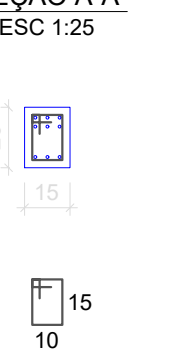
SEÇÃO A-A
ESC 1:25



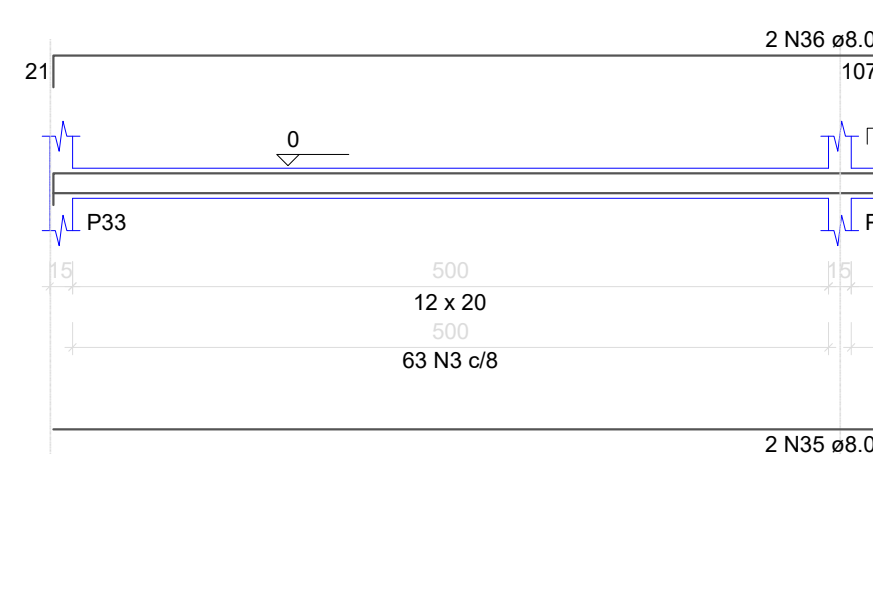
V21
ESC 1:50



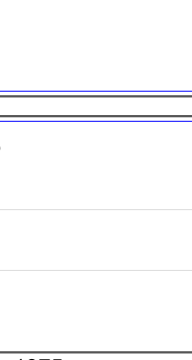
SEÇÃO A-A
ESC 1:25



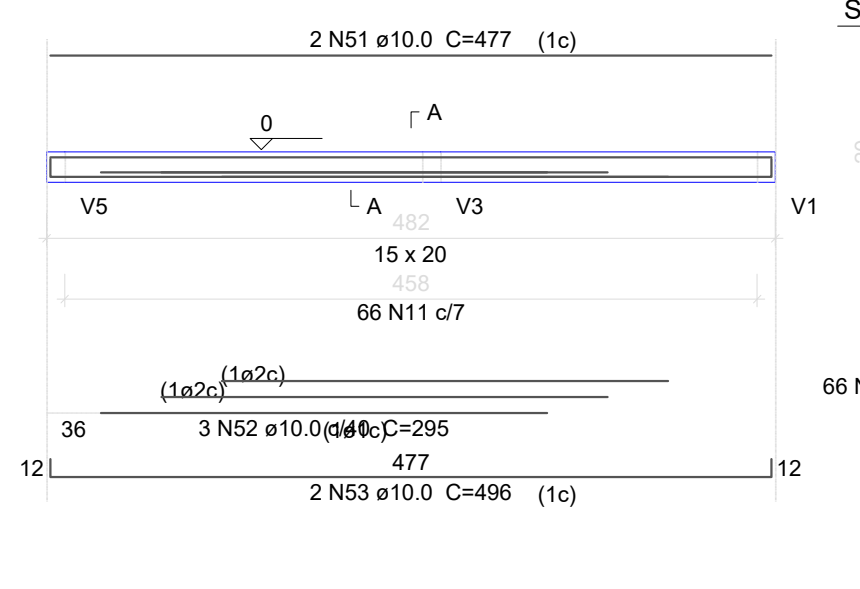
V22
ESC 1:50



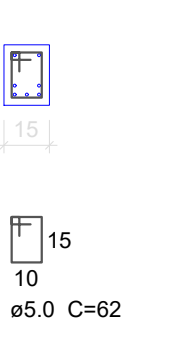
SEÇÃO A-A
ESC 1:25



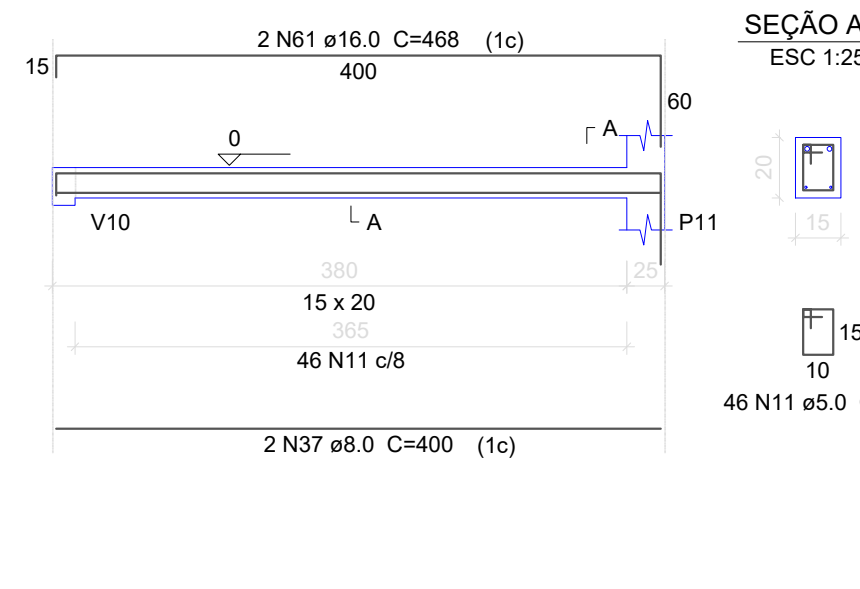
V23
ESC 1:50



SEÇÃO A-A
ESC 1:25



V24
ESC 1:50



SEÇÃO A-A
ESC 1:25



Relação do aço

AÇO	N	DIAM	Q	UNIT (cm)	C.TOTAL (cm)
CA60	1	5.0	2	270	540
	2	5.0	2	265	530
	3	5.0	972	56	54432
	4	5.0	2	230	460
	5	5.0	50	66	3300
	6	5.0	2	220	440
	7	5.0	2	240	480
	8	5.0	2	570	1140
	9	5.0	91	72	6552
	10	5.0	2	312	624
	11	5.0	168	62	10416
CA50	12	8.0	2	936	1872
	13	8.0	2	1022	2044
	14	8.0	2	825	1650
	15	8.0	2	665	1330
	16	8.0	2	1200	2400
	17	8.0	2	293	586
	18	8.0	2	1150	2300
	19	8.0	2	185	370
	20	8.0	1	250	250
	21	8.0	2	546	1092
	22	8.0	1	285	285
	23	8.0	2	661	1322
	24	8.0	4	770	3080
	25	8.0	2	620	1240
	26	8.0	2	75	150
	27	8.0	1	262	262
	28	8.0	2	545	1090
	29	8.0	2	538	1076
	30	8.0	1	135	135
	31	8.0	2	548	1096
	32	8.0	2	572	1144
	33	8.0	2	255	510
	34	8.0	2	25	50
	35	8.0	2	1075	2150
	36	8.0	2	1112	2224
	37	8.0	2	400	800
	38	10.0	2	175	350
	39	10.0	2	174	348
	40	10.0	2	598	1196
	41	10.0	2	579	1158
	42	10.0	2	559	1118
	43	10.0	2	423	846
	44	10.0	1	207	207
	45	10.0	1	122	122
	46	10.0	1	214	214
	47	10.0	2	489	978
	48	10.0	1	145	145
	49	10.0	2	542	1084
	50	10.0	3	549	1647
	51	10.0	2	477	954
	52	10.0	3	295	885
	53	10.0	2	496	992
	54	12.5	1	174	174
	55	12.5	2	234	468
	56	12.5	1	179	179
	57	12.5	2	279	558
	58	12.5	1	245	245
	59	12.5	1	182	182
	60	12.5	2	1054	2108
	61	16.0	2	468	936

Resumo do aço

AÇO	DIAM	C.TOTAL (m)	PESO + 10% (kg)
CA50	8.0	305.1	132.4
	10.0	122.5	83
	12.5	39.2	41.5
	16.0	9.4	16.3
CA60	5.0	789.2	133.8
PESO TOTAL			
CA50		273.2	
CA60		133.8	

Vol. de concreto total (C-25) = 2,96 m³
Área de forma total = 60,75 m²

QUADRO DE ÁREAS:	OBRA:
Projeto	420,69m²
CENTRO DE APOIO AO PRODUTOR	
ENDEREÇO:	
Avenida Henrique H. Velho Cordova, S/N, BAIRRO COHAB Bom Jardim da Serra - SC	

RESP. TÉCNICO:	PROPRIETÁRIO:
Eng. Civil Jorge E. Batista Muniz	Prefeitura Municipal de Bom Jardim da Serra
CREA-SC 1433778-1	CNPJ: 82.844.754/0001-62

DESCRICO:	PRANCHA:
PROJETO ESTRUTURAL FUNDAÇÃO VIGAS	5/9

ESCALA:	ÁREA TOTAL:	DATA:	FORMATO PRANCHA:	REVISÃO:
INDICADA	420,69m²	FEVEREIRO/2022	A1(841X594mm)	JEBM-16/02/22