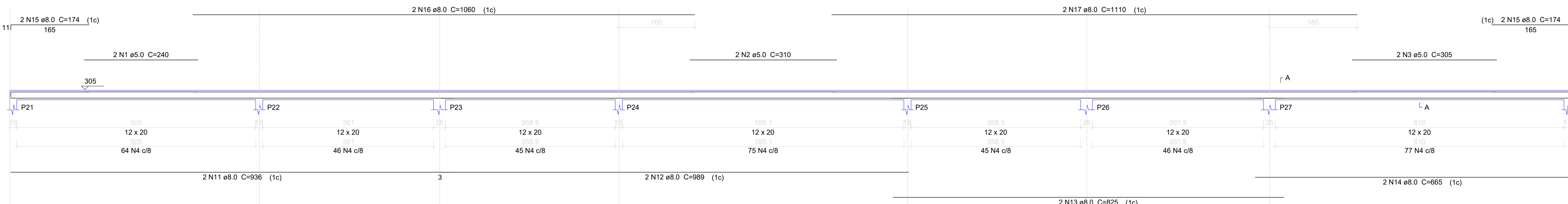


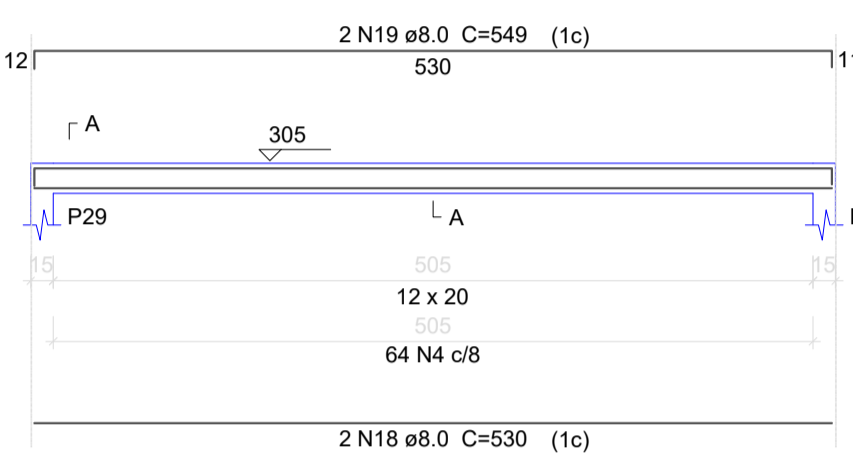
V9

ESC 1:50



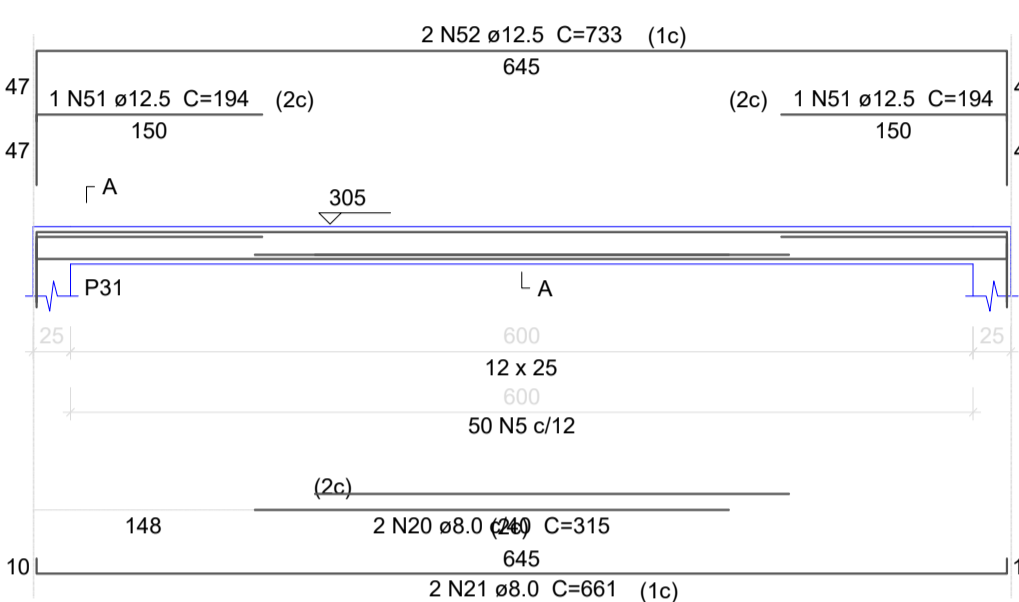
V10

ESC 1:50



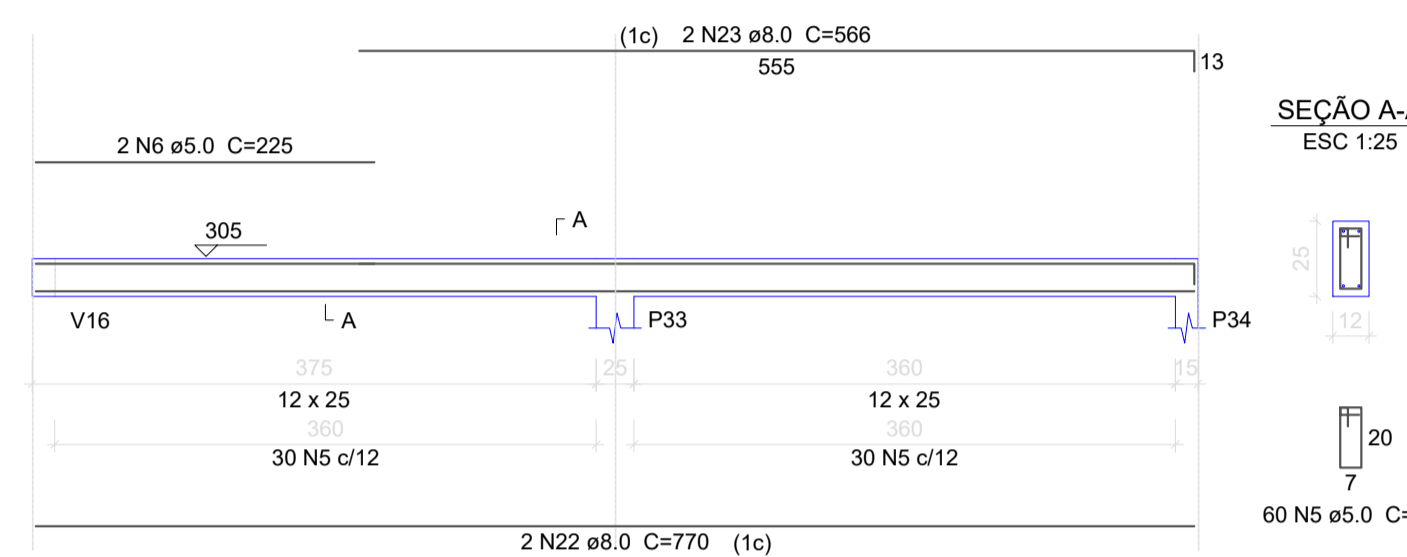
V11

ESC 1:50



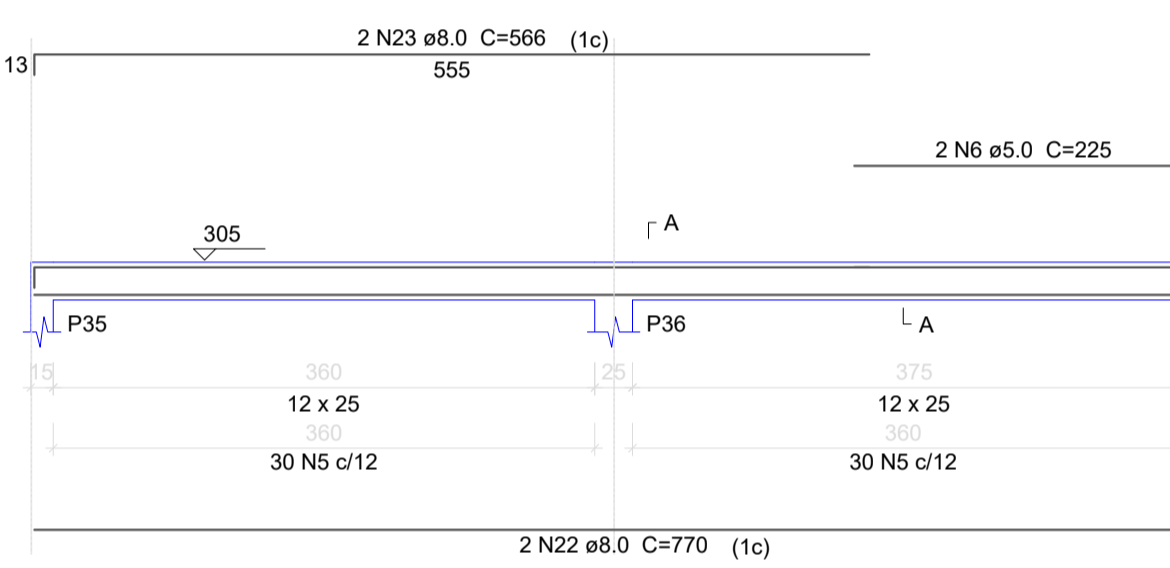
V12

ESC 1:50



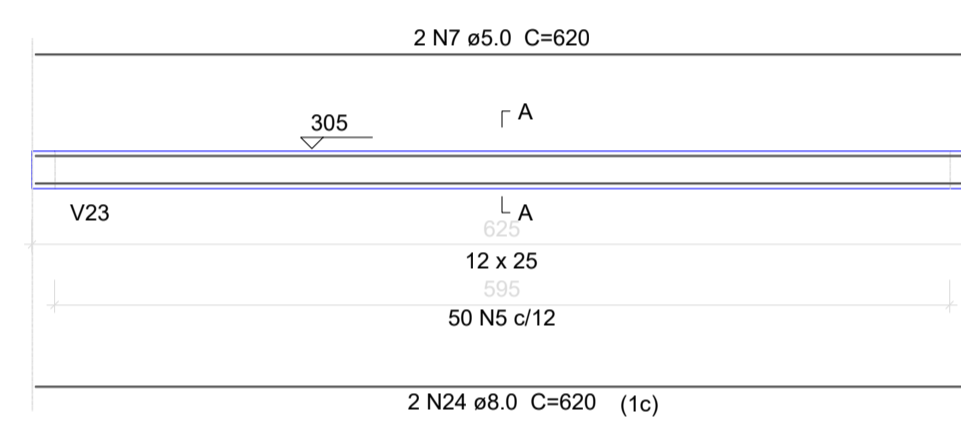
V13

ESC 1:50



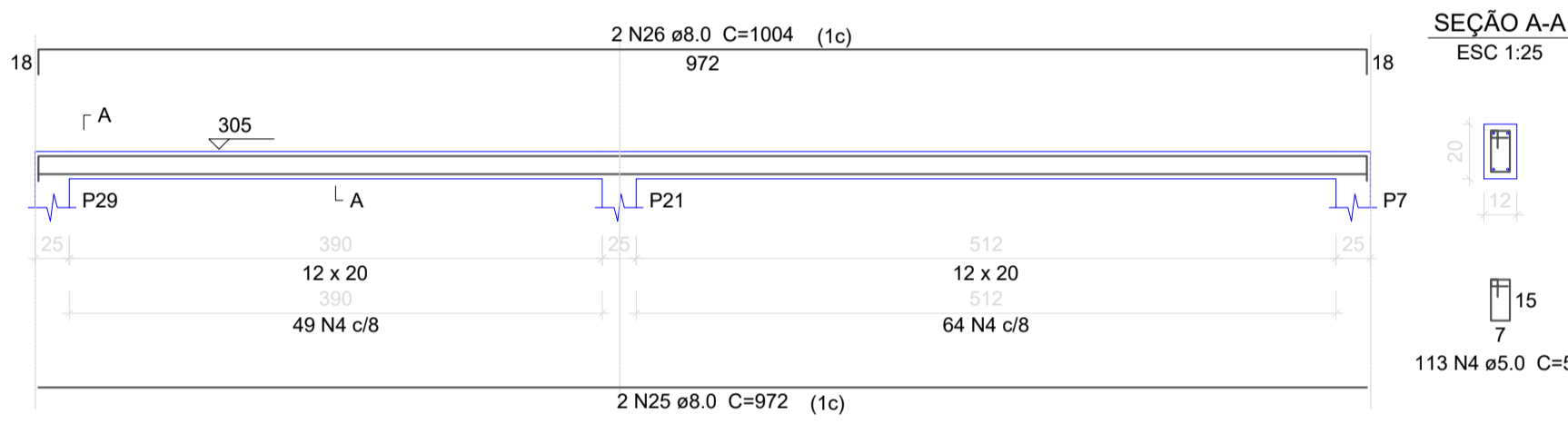
V14

ESC 1:50



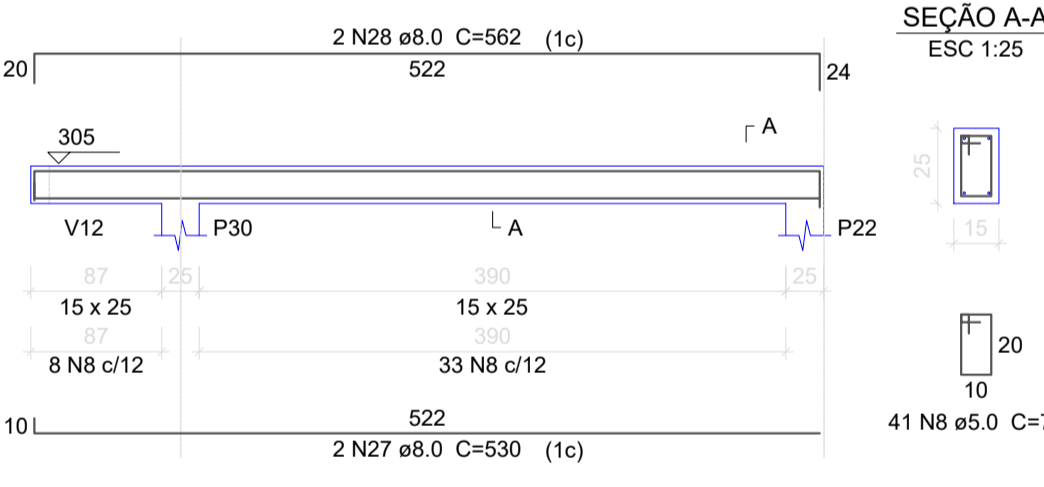
V15

ESC 1:50



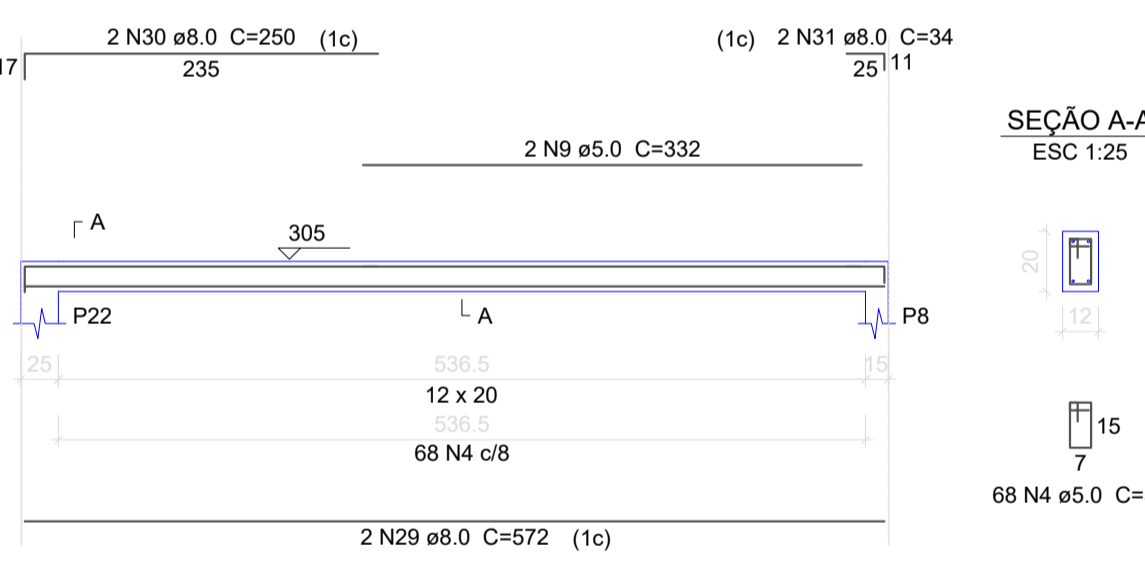
V16

ESC 1:50



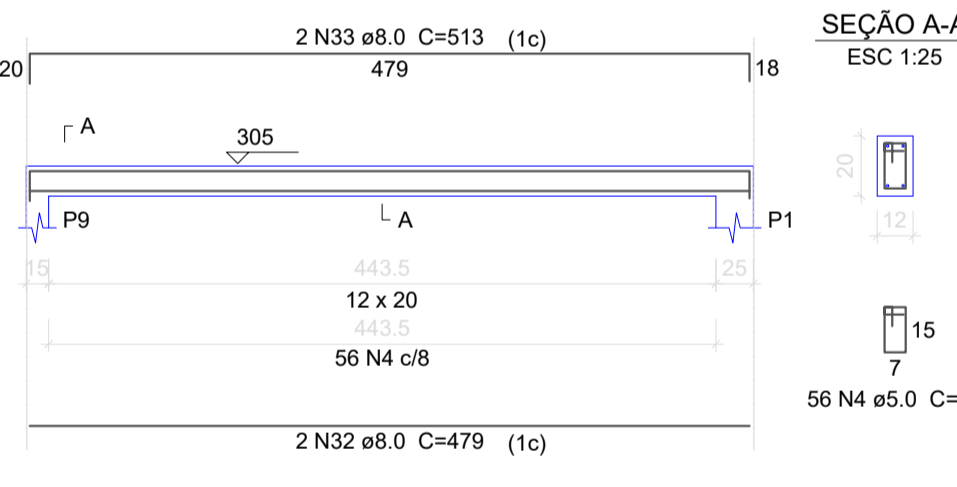
V17

ESC 1:50



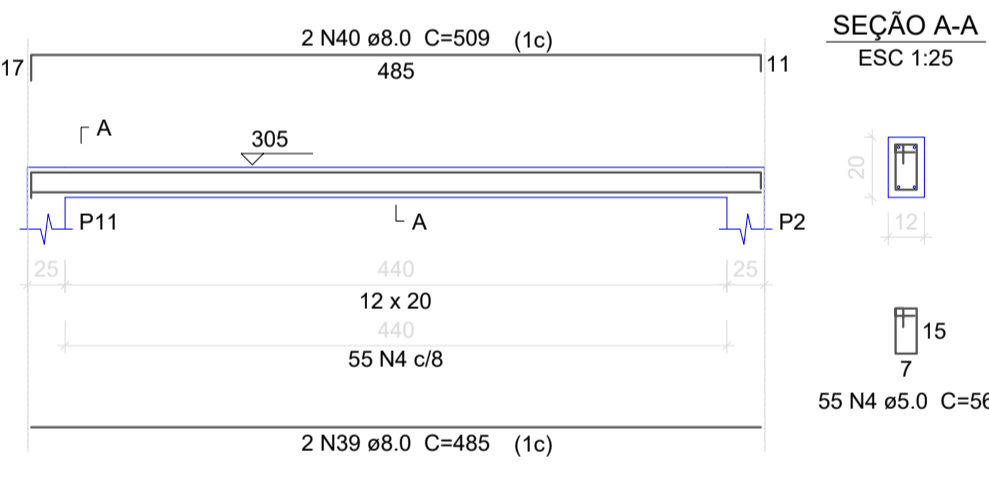
V18

ESC 1:50



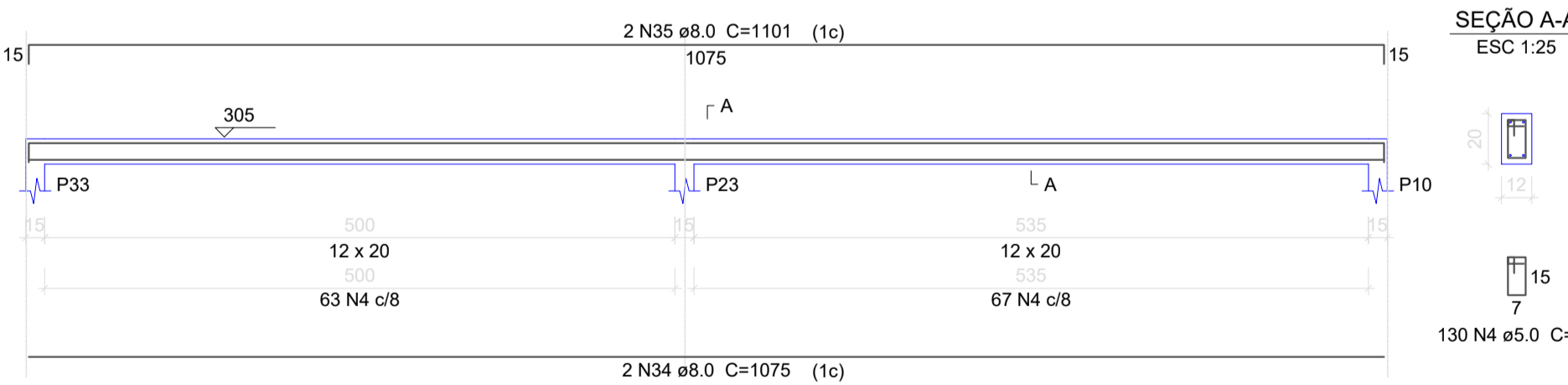
V22

ESC 1:50



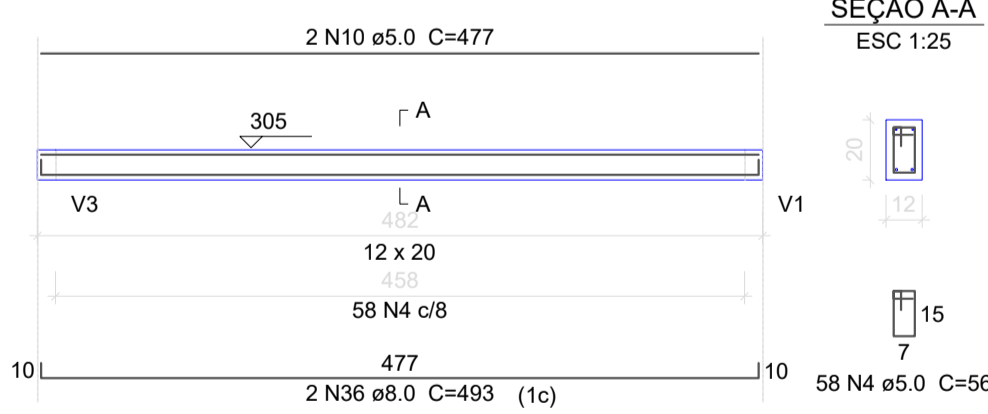
V19

ESC 1:50



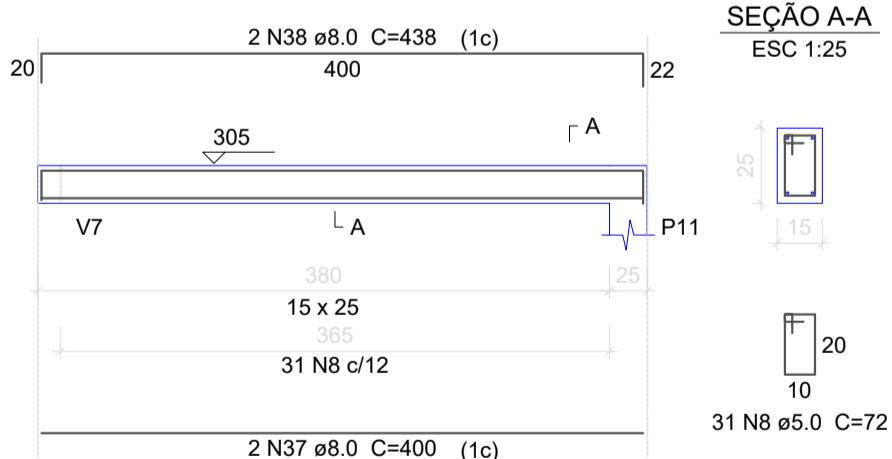
V20

ESC 1:50



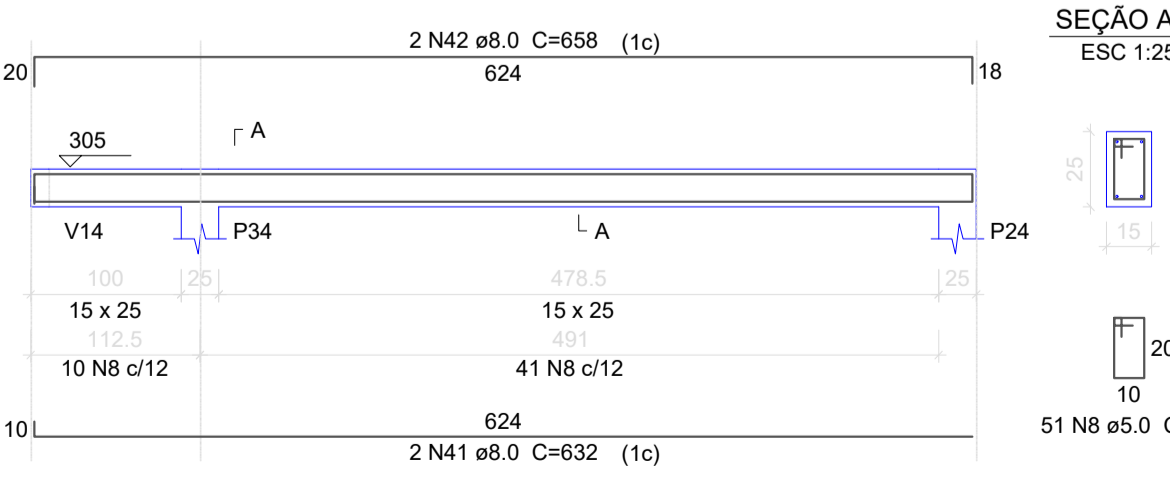
V21

ESC 1:50



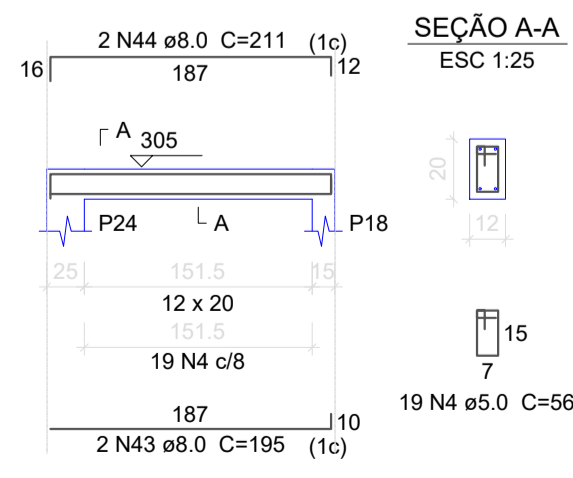
V23

ESC 1:50



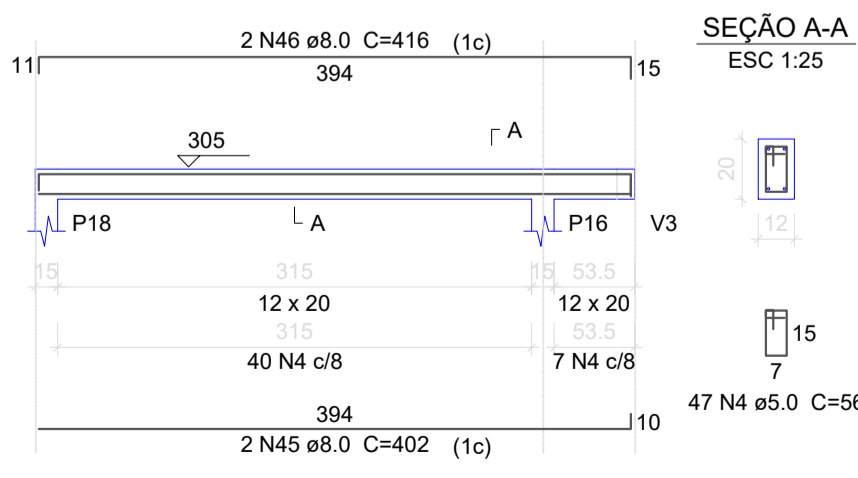
V24

ESC 1:50



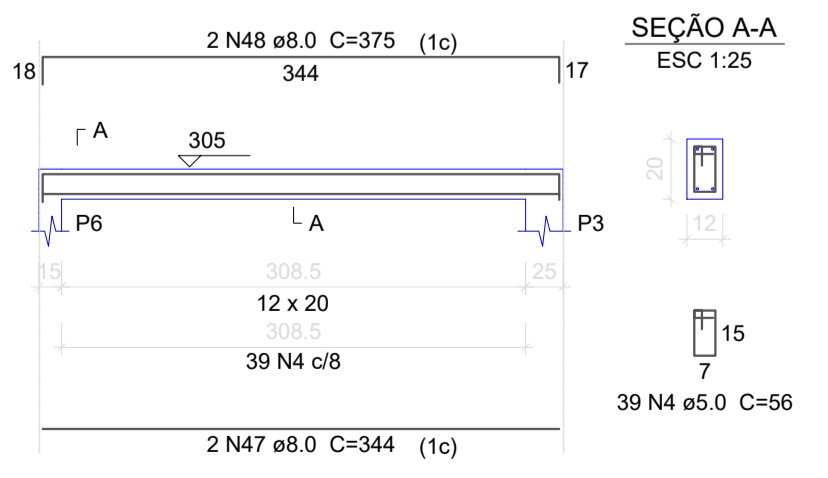
V25

ESC 1:50



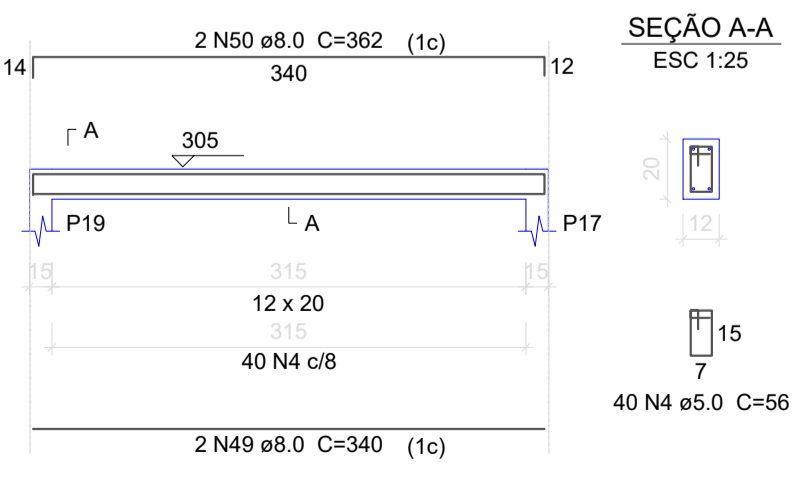
V26

ESC 1:50



V27

ESC 1:50



Relação do aço

AÇO	N	DIAM	Q	UNIT (cm)	C.TOTAL (cm)
CA60	1	5.0	2	240	480
	2	5.0	2	310	620
	3	5.0	2	305	610
	4	5.0	1087	56	60872
	5	5.0	220	66	14520
	6	5.0	4	225	900
	7	5.0	2	620	1240
	8	5.0	123	72	8856
	9	5.0	2	332	664
	10	5.0	2	477	954
CA50	11	8.0	2	936	1872
	12	8.0	2	989	1978
	13	8.0	2	825	1650
	14	8.0	2	665	1330
	15	8.0	4	174	696
	16	8.0	2	1060	2120
	17	8.0	2	1110	2220
	18	8.0	2	530	1060
	19	8.0	2	549	1098
	20	8.0	2	315	630
	21	8.0	2	661	1322
	22	8.0	4	770	3080
	23	8.0	4	566	2264
	24	8.0	2	620	1240
	25	8.0	2	972	1944
	26	8.0	2	1004	2008
	27	8.0	2	530	1060
	28	8.0	2	562	1124
	29	8.0	2	572	1144
	30	8.0	2	250	500
	31	8.0	2	34	68
	32	8.0	2	479	958
	33	8.0	2	513	1026
	34	8.0	2	1075	2150
	35	8.0	2	1101	2202
	36	8.0	2	493	986
	37	8.0	2	400	800
	38	8.0	2	438	876
	39	8.0	2	485	970
	40	8.0	2	509	1018
	41	8.0	2	632	1264
	42	8.0	2	658	1316
	43	8.0	2	195	390
	44	8.0	2	211	422
	45	8.0	2	402	804
	46	8.0	2	416	832
	47	8.0	2	344	688
	48	8.0	2	375	750
	49	8.0	2	340	680
	50	8.0	2	362	724
	51	12.5	2	194	388
	52	12.5	2	733	1466

Resumo do aço

AÇO	DIAM	C.TOTAL (m)	PESO + 10 % (kg)
CA50	8.0	492.7	213.8
	12.5	18.6	19.6
CA60	5.0	897.2	152.1
PESO TOTAL			
CA50		233.5	
CA60		152.1	

Vol. de concreto total (C-25) = 3.64 m³
Área de forma total = 75.54 m²

QUADRO DE ÁREAS:	OBRA:
Projeto: 420,69m²	CENTRO DE APOIO AO PRODUTOR
	ENDEREÇO:
	Avenida Henrique H. Velho Cordova, S/N, BAIRRO COHAB Bom Jardim da Serra - SC

RESP. TÉCNICO:	Eng. Civil Jorge E. Batista Muniz
CREA-SC 143778-1	
PROPRIETÁRIO:	Prefeitura Municipal de Bom Jardim da Serra
CNPJ: 82.844.754/0001-82	

DESCRIÇÃO:	PRANCHA:
PROJETO ESTRUTURAL	
TÉRREO	
VIGAS	
	8/9

ESCALA:	ÁREA TOTAL:	DATA:	FORMATO PRANCHA:	REVISÃO:
INDICADA	420,69m²	FEVEREIRO/2022	A1(841X594mm)	JEBM-16/02/22