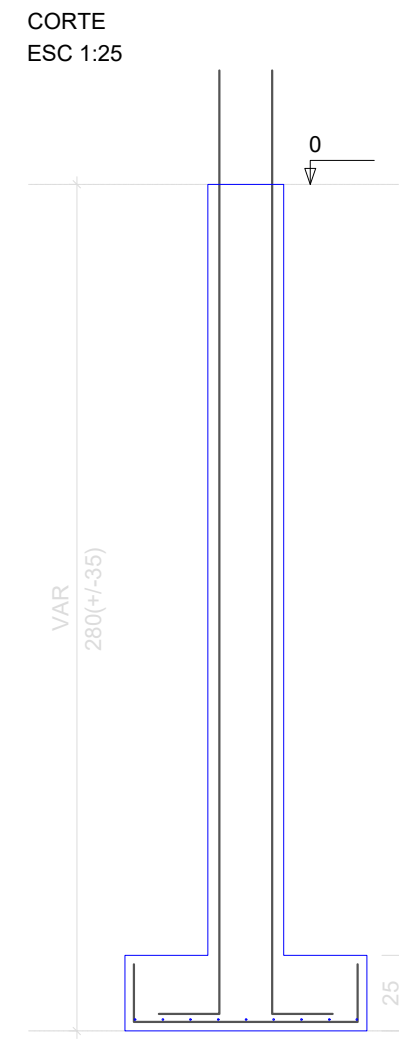
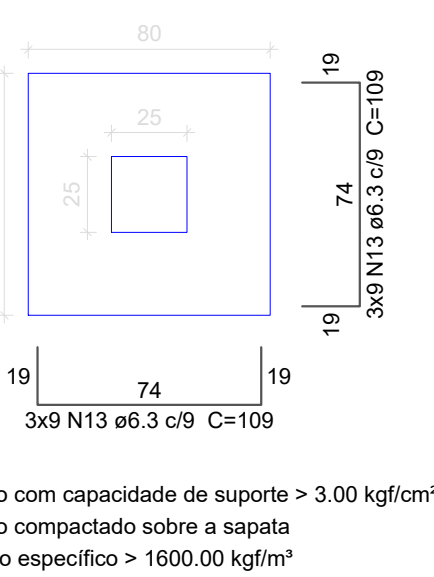
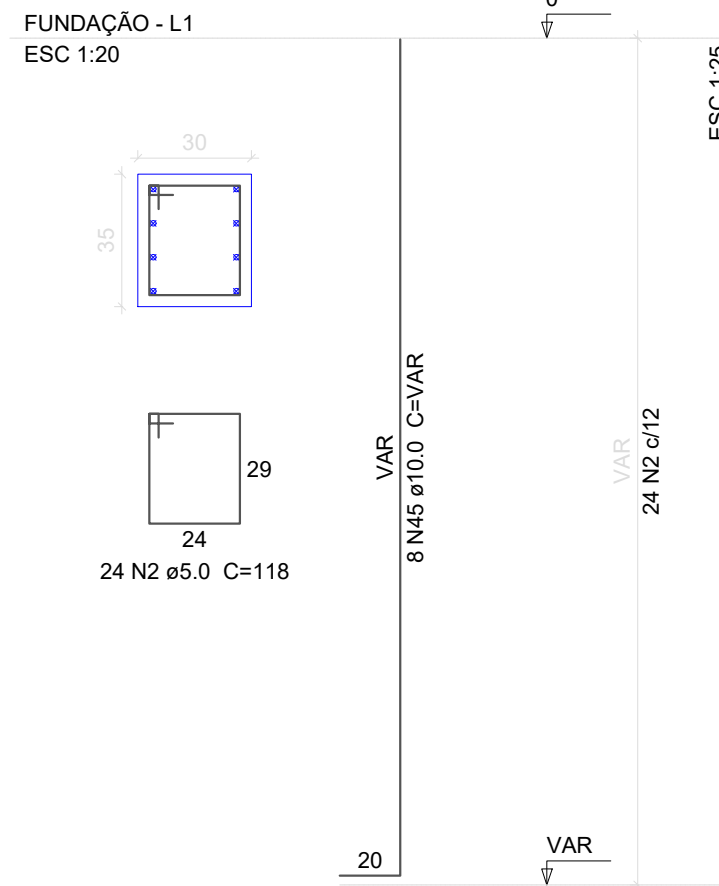


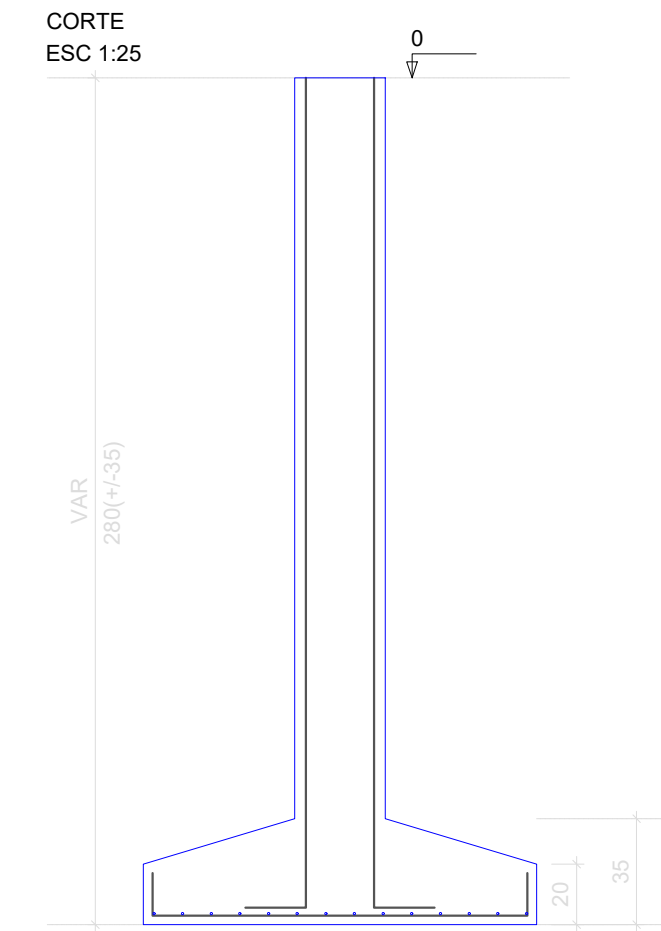
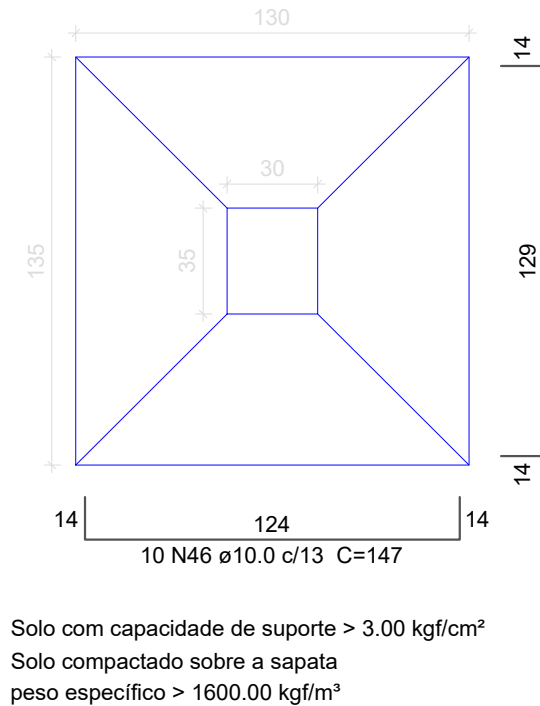
S1=S2=S5
PLANTA
ESC 1:25



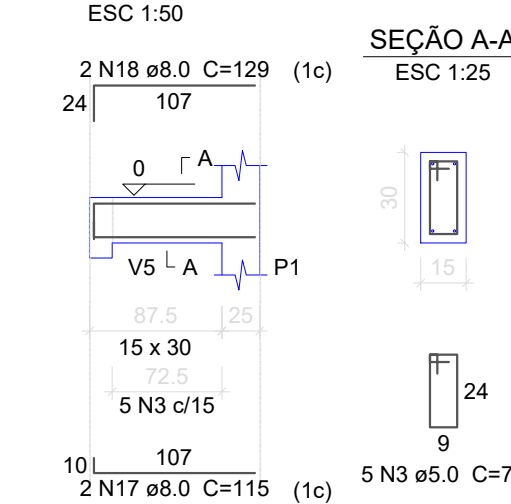
P4



S4
PLANTA
ESC 1:25



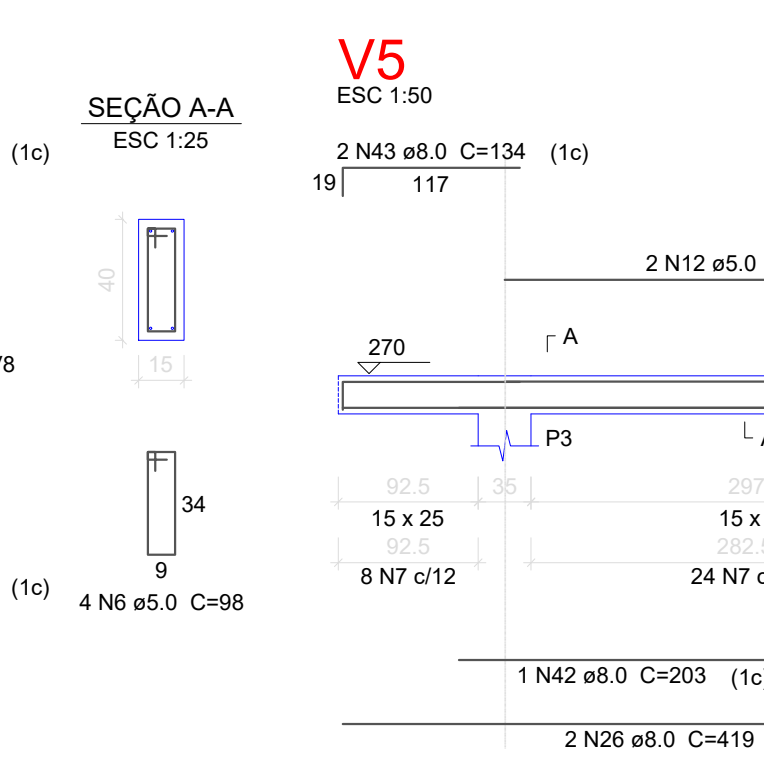
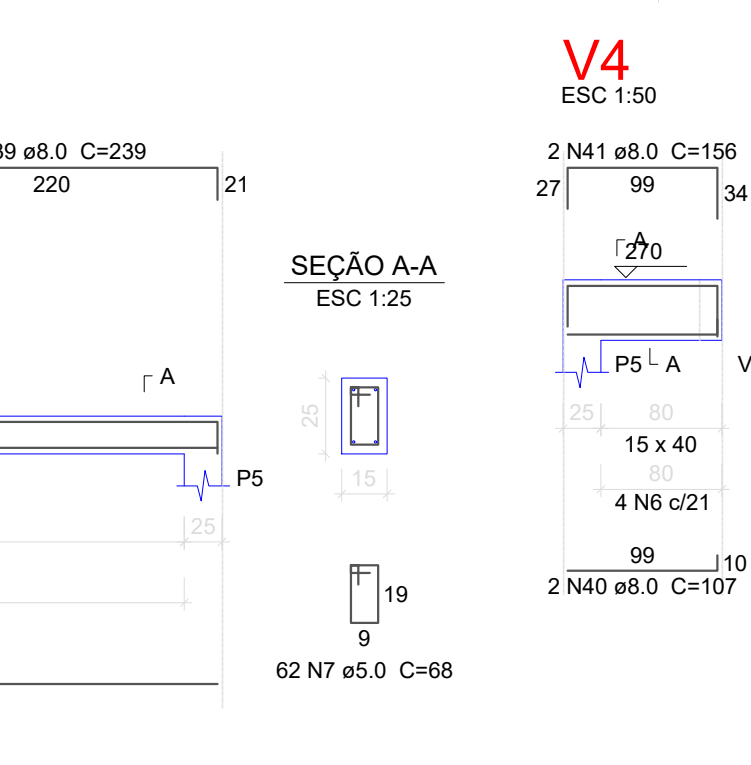
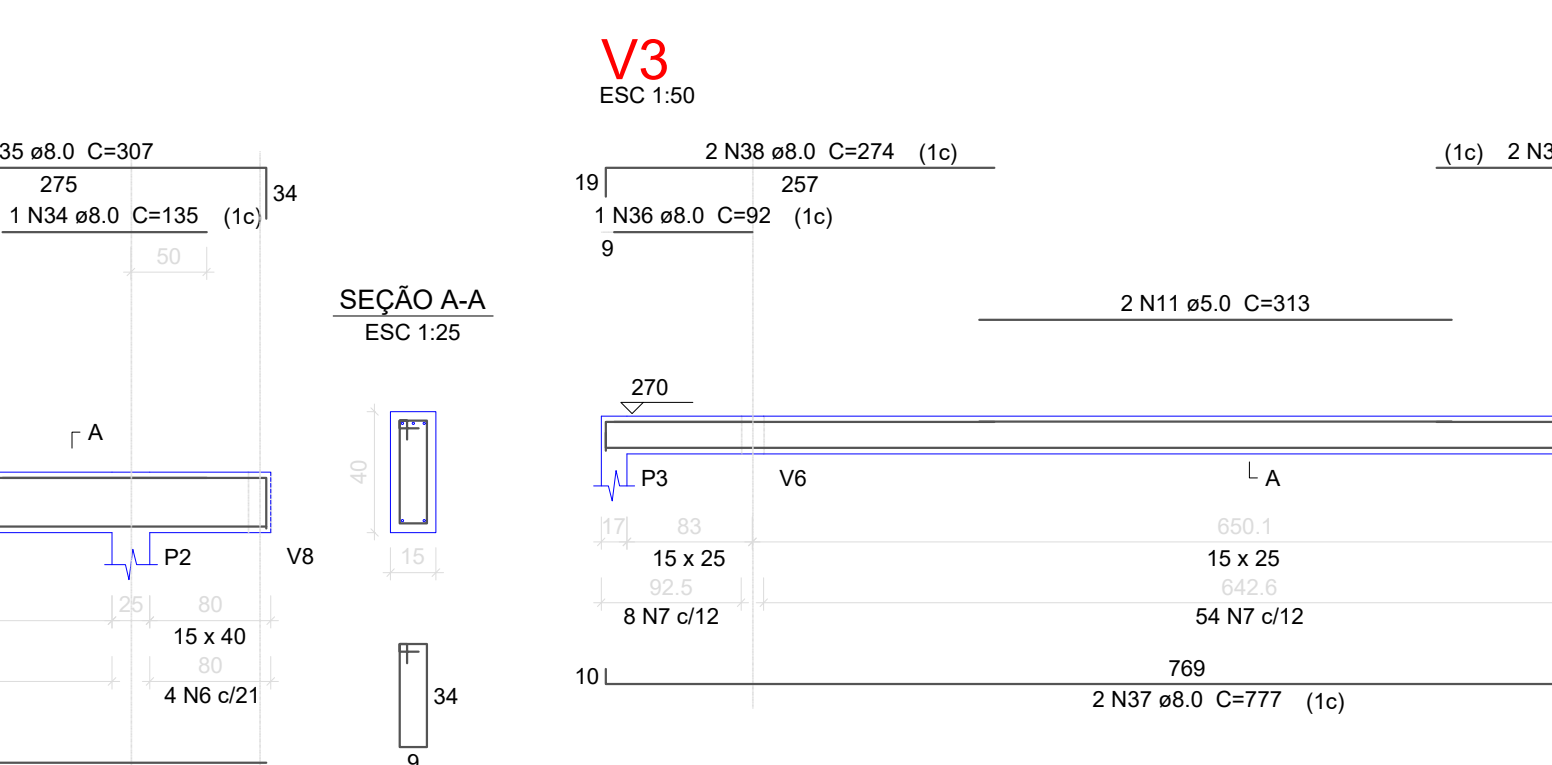
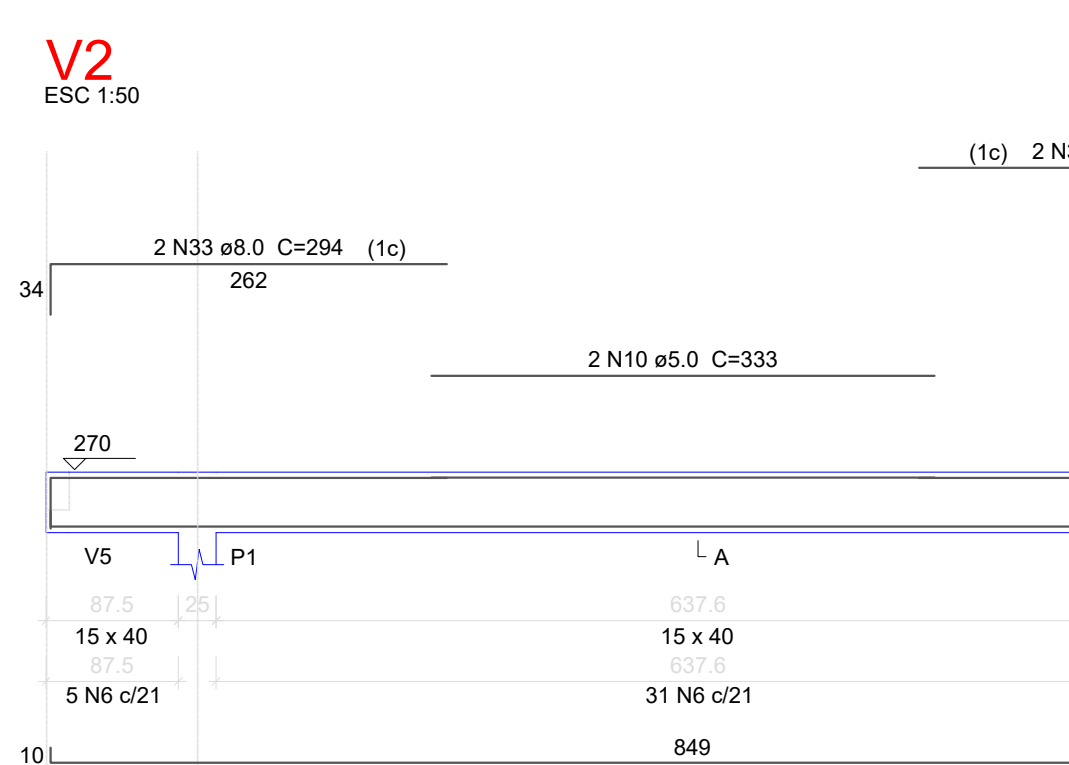
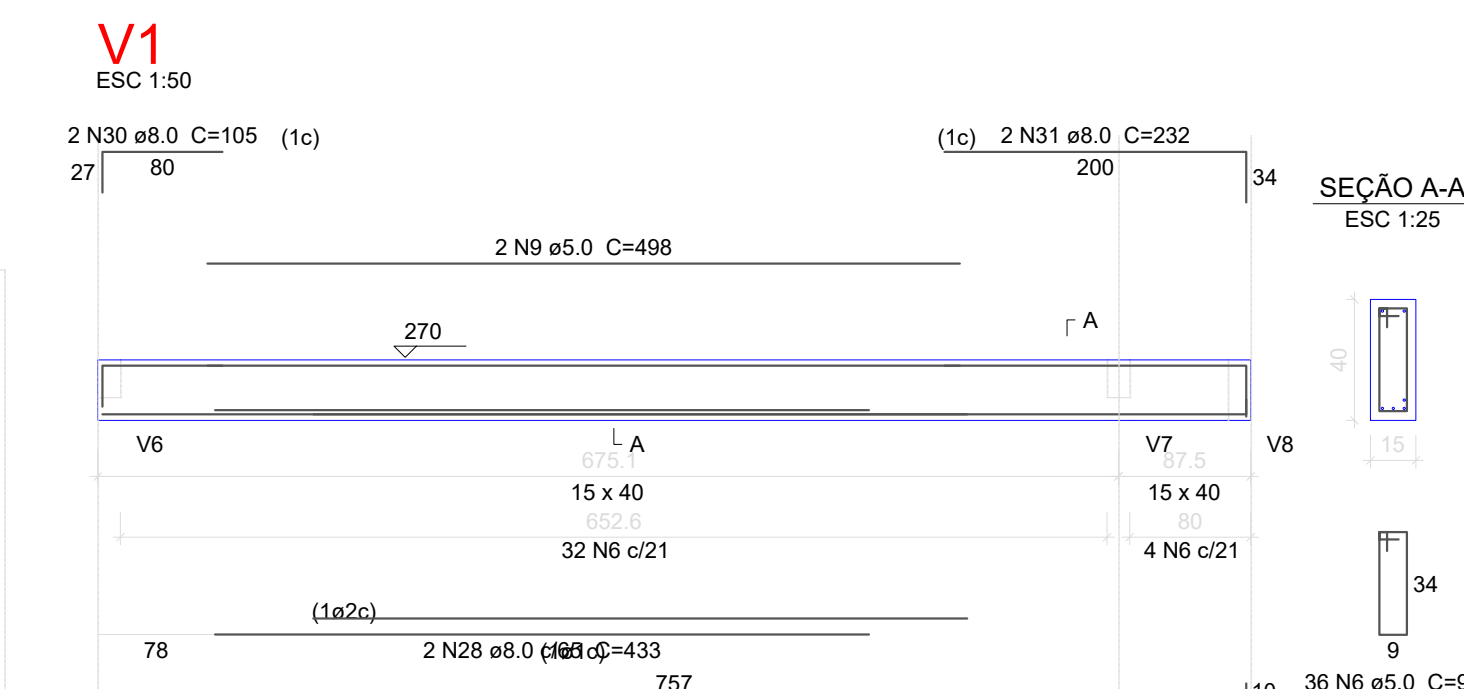
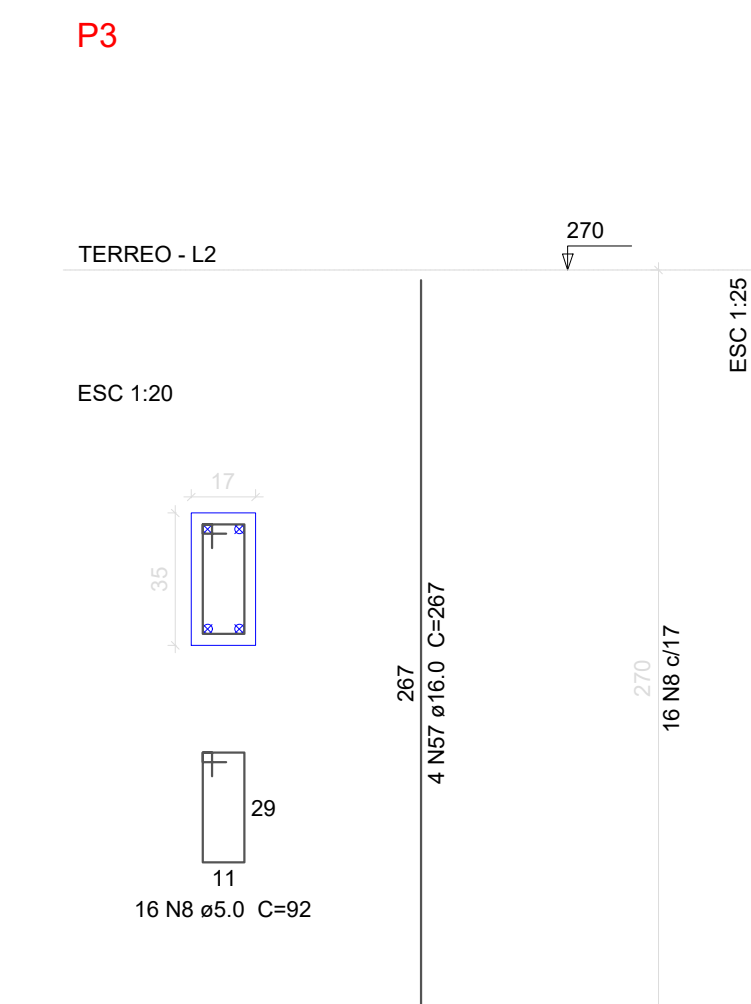
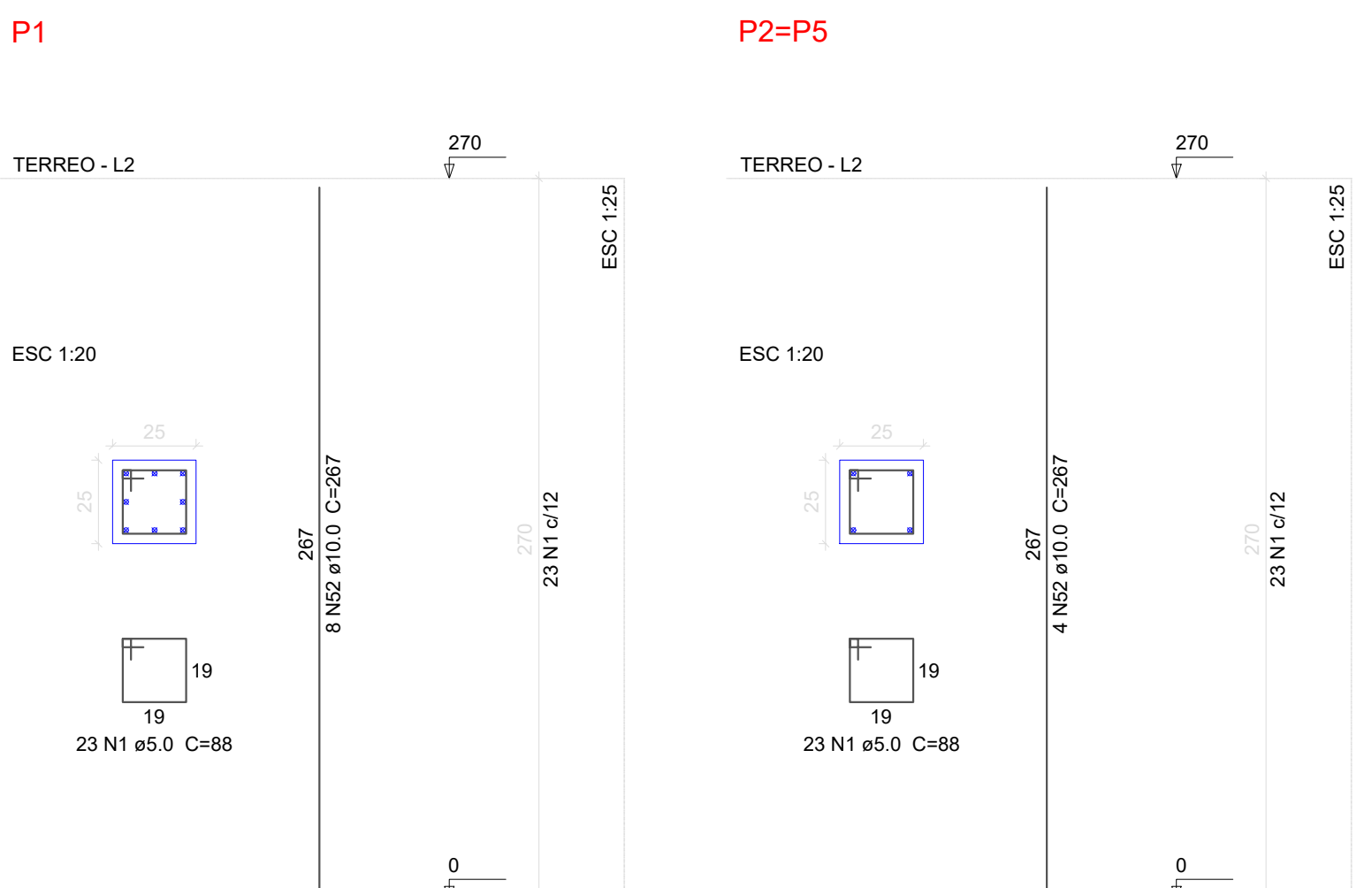
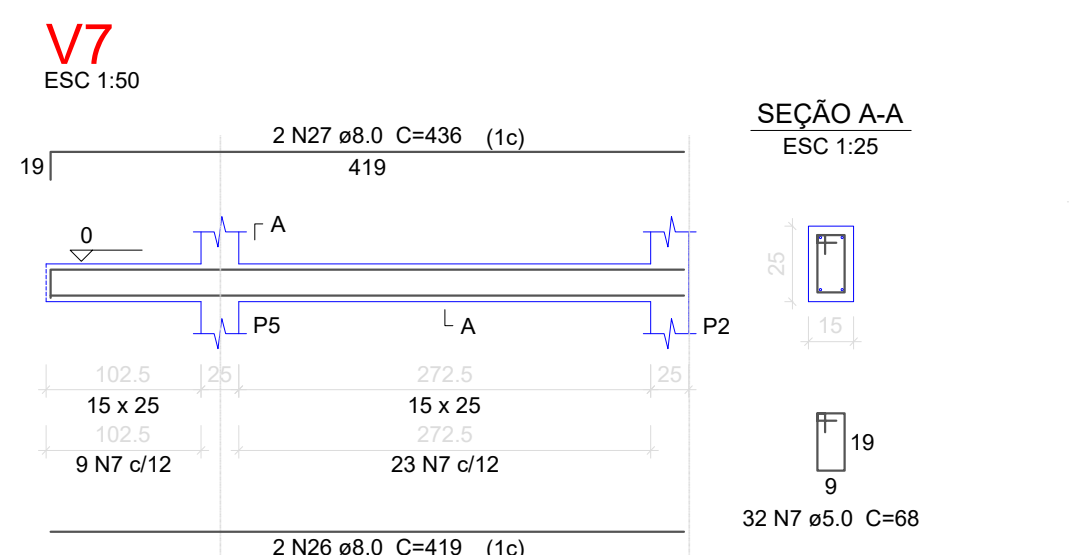
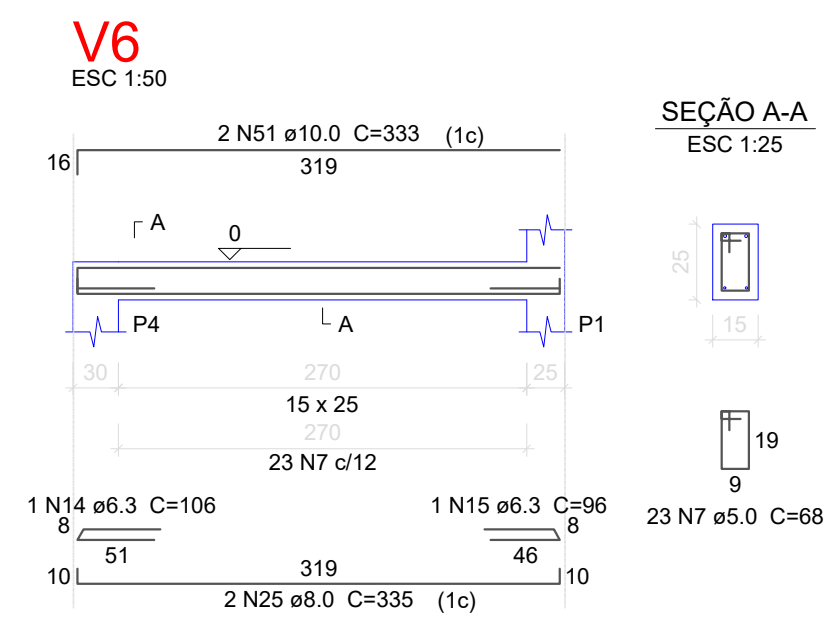
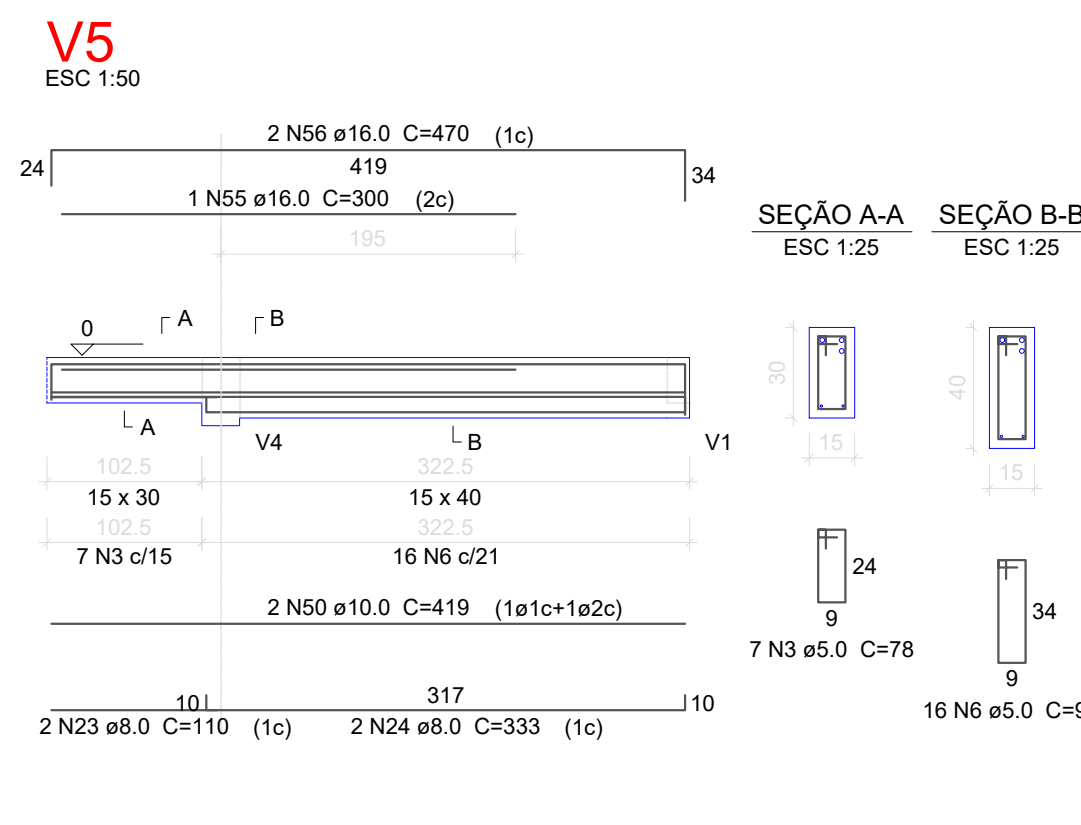
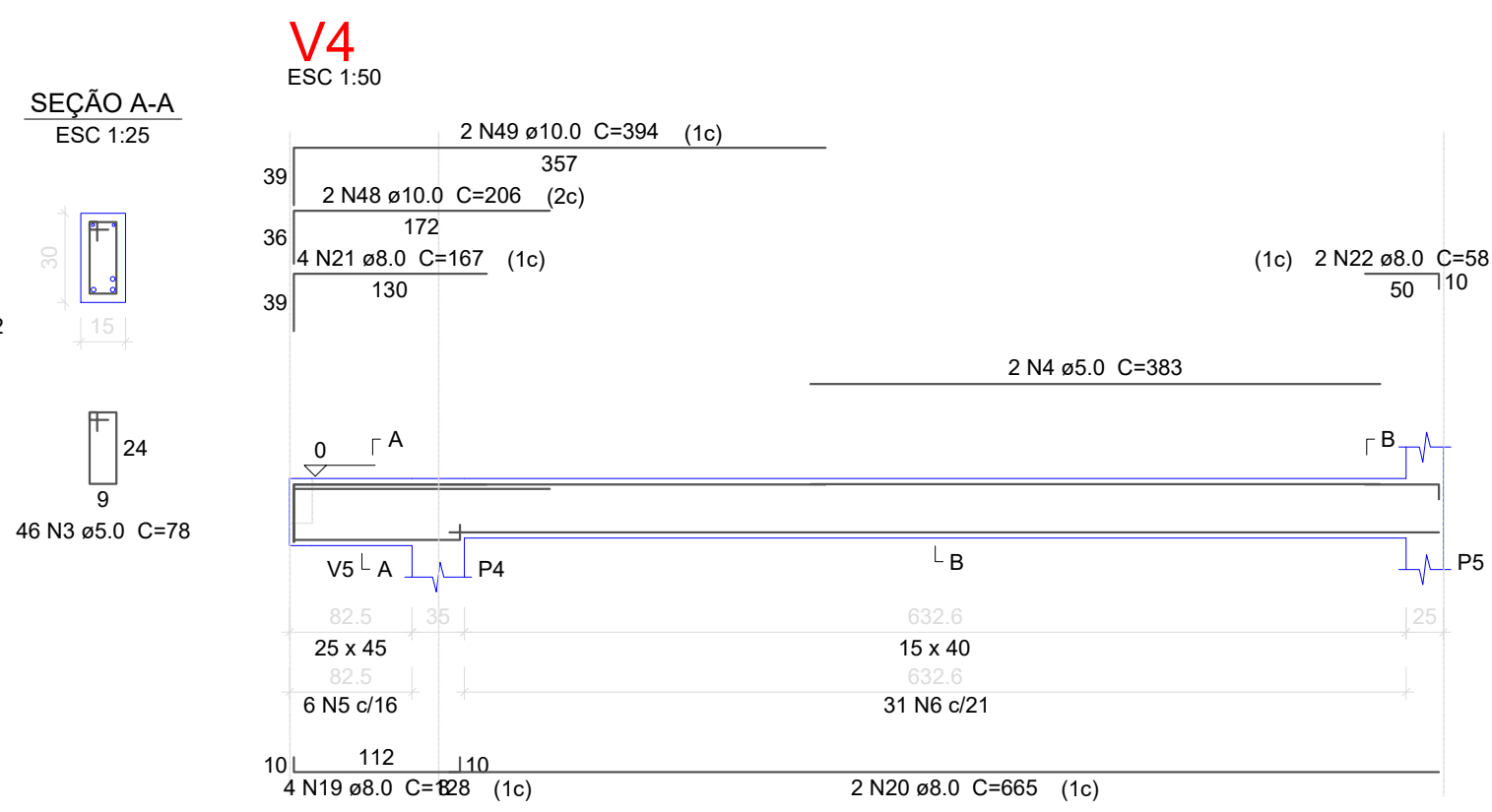
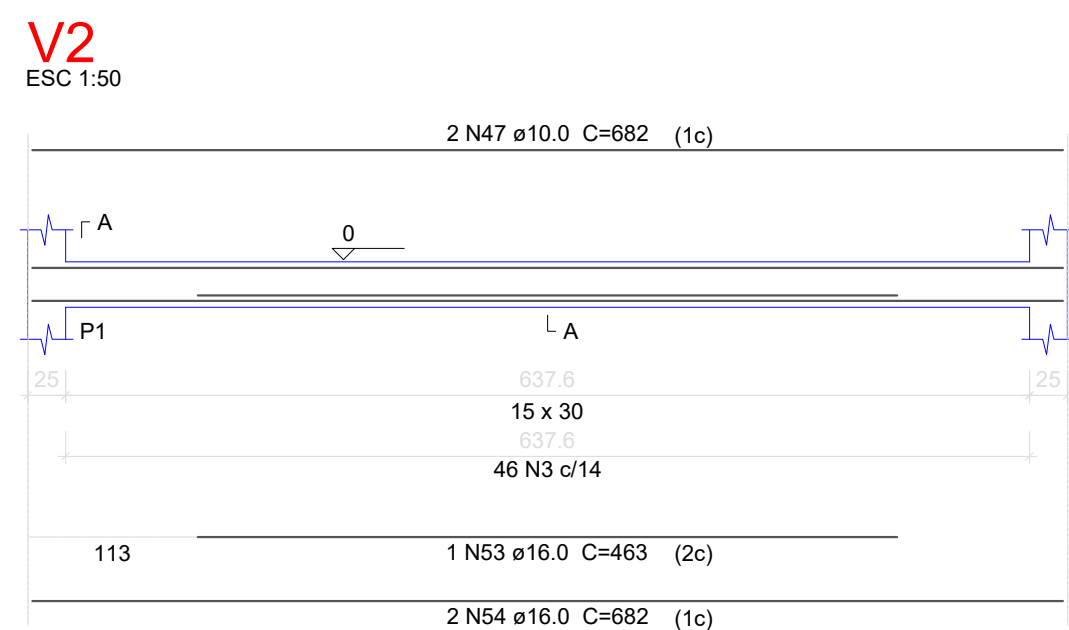
V1
ESC 1:50



Relação do aço

Fundação:	S1	S4
	V1	V2
	V4	V5
	V6	V7
Terreo:	P1	2xP2
	P3	V3
	V2	V3
	V4	V5

ACO	N	DIAM	Q	UNIT (cm)	C.T
CA60	1	5.0	141	88	
	2	5.0	24	118	
	3	5.0	58	78	
	4	5.0	2	383	
	5	5.0	6	128	
	6	5.0	127	98	
	7	5.0	149	68	
	8	5.0	16	92	
	9	5.0	19	498	
	10	5.0	2	333	
	11	5.0	2	313	
	12	5.0	2	312	
CA50	13	6.3	54	109	
	14	6.3	1	106	
	15	6.3	1	96	
	16	8.0	14	153	
	17	8.0	2	115	
	18	8.0	2	129	
	19	8.0	4	128	
	20	8.0	2	665	
	21	8.0	4	167	
	22	8.0	2	58	
	23	8.0	2	110	
	24	8.0	2	333	
	25	8.0	2	335	
	26	8.0	4	419	
	27	8.0	2	436	
	28	8.0	2	433	
	29	8.0	2	765	
	30	8.0	2	105	
	31	8.0	2	232	
	32	8.0	2	857	
	33	8.0	2	294	
	34	8.0	1	135	
	35	8.0	2	307	
	36	8.0	1	92	
	37	8.0	2	777	
	38	8.0	2	274	
	39	8.0	2	239	
	40	8.0	2	107	
	41	8.0	2	156	
	42	8.0	1	203	
	43	8.0	2	134	
	44	10.0	16	VAR	
	45	10.0	8	VAR	
	46	10.0	10	147	
	47	10.0	2	662	
	48	10.0	2	266	
	49	10.0	2	394	
	50	10.0	2	419	
	51	10.0	2	333	
	52	10.0	16	267	
	53	16.0	1	463	
	54	16.0	2	682	
	55	16.0	1	300	
	56	16.0	2	470	
	57	16.0	4	267	



QUADRO DE ÁREAS:		OBRA:	
Projeto	11,55m ²	AMPLIAÇÃO - CRECHE PRÓ-INFÂNCIA	
ENDEREÇO:		Rua Ernes Zandonadi, S/N, BAIRRO COHAB Bom Jardim da Serra - SC	
RESP. TÉCNICO: Eng. Civil Jorge E. Batista Muniz CREA-SC 143776-1			
PROPRIETÁRIO: Prefeitura Municipal de Bom Jardim da Serra CNPJ: 82.844.754/0001-62			
DESCRICO:		PRANCHA:	
PROJETO ESTRUTURAL SAPATAS - FUNDAÇÃO VIGAS - FUNDAÇÃO E TERREO PILARES - FUNDAÇÃO E TERREO		2/3	
ESCALA:	ÁREA TOTAL:	DATA:	FORMATO PRANCHA:
INDICADA	11,55m ²	ABRIL2022	A1(841X594mm)
REVISÃO:		JEBM-28/04/22	

Resumo do aço

ACO	DIAM	C.TOTAL (m)	PESO + 10% (kg)
CA50	6.3	60.9	16.4
	8.0	191.5	83.1
	10.0	175.5	119
	16.0	41.4	71.8
CA60	5.0	482.6	81.8
PESO TOTAL			
CA50	290.3		
CA60	81.8		

Vol. de concreto total (C-25) = 5.31 m³
Área de forma total = 72.82 m²