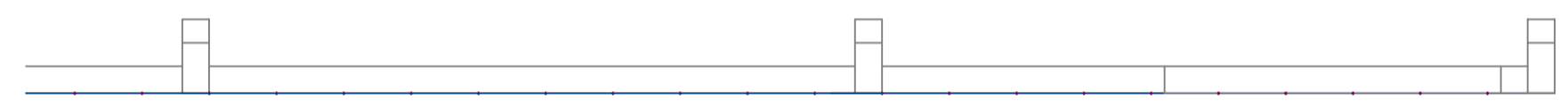
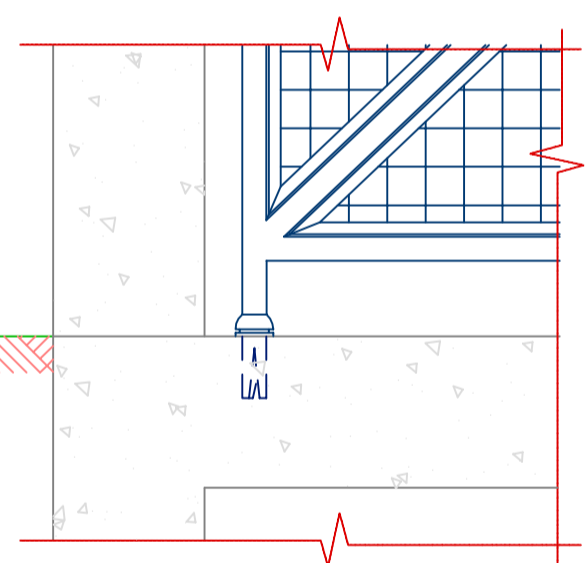


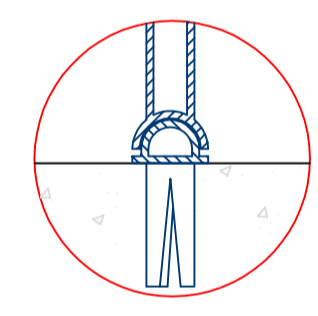
1 VISTA LATERAL DA CERCA DE TELA TIPO ALAMBRADO
ESCALA 1:25



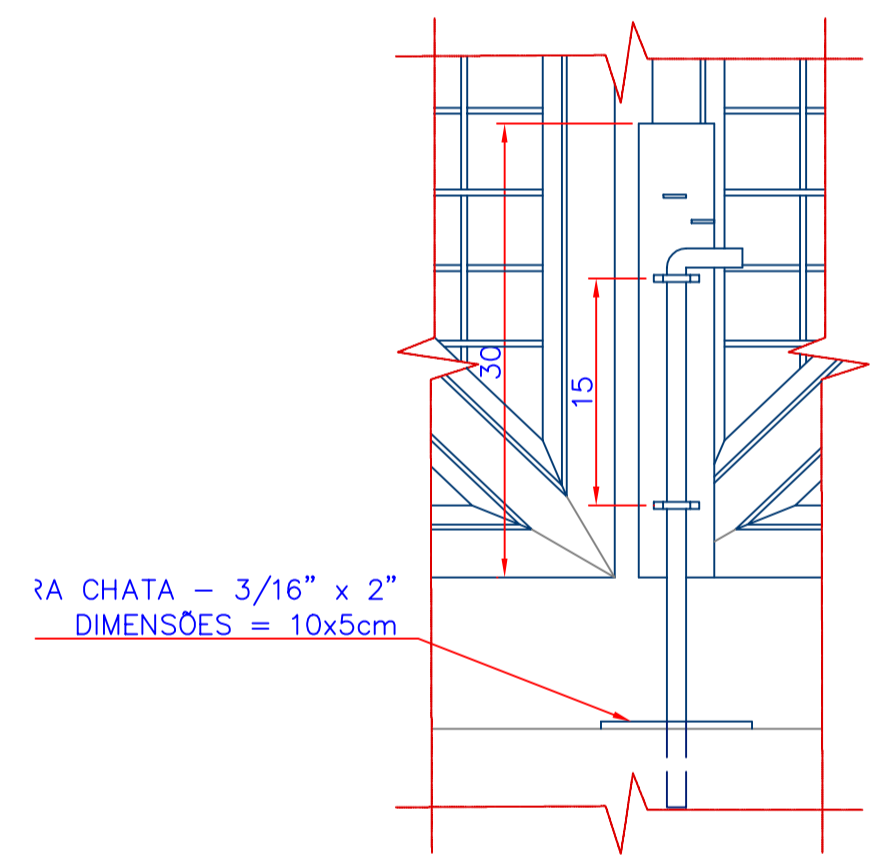
2 VISTA SUPERIOR DA CERCA DE TELA TIPO ALAMBRADO
ESCALA 1:25



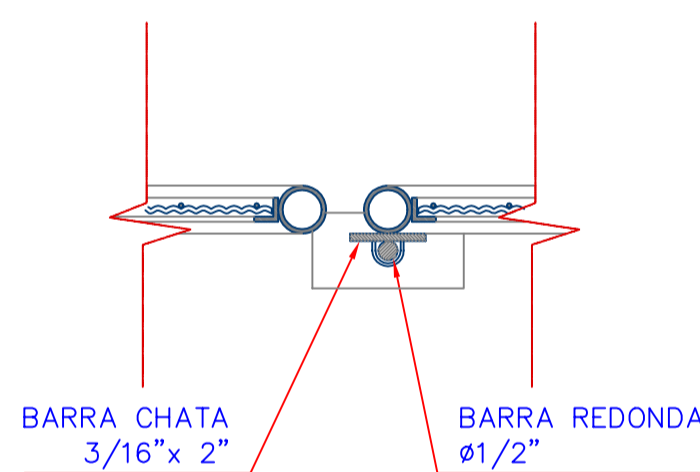
7 DETALHE 52
ESCALA 1:10



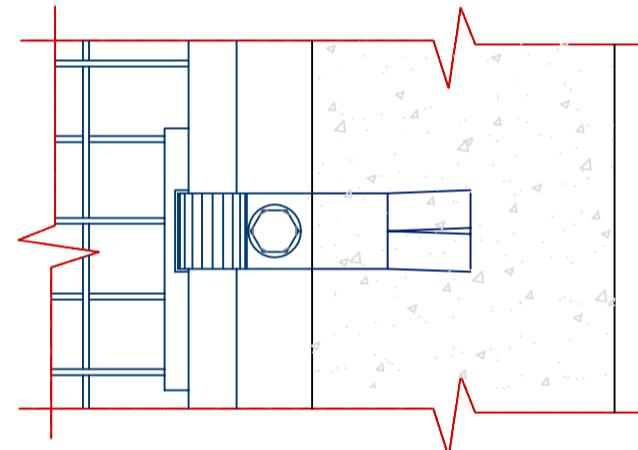
8 DETALHE 53
ESCALA 1:5



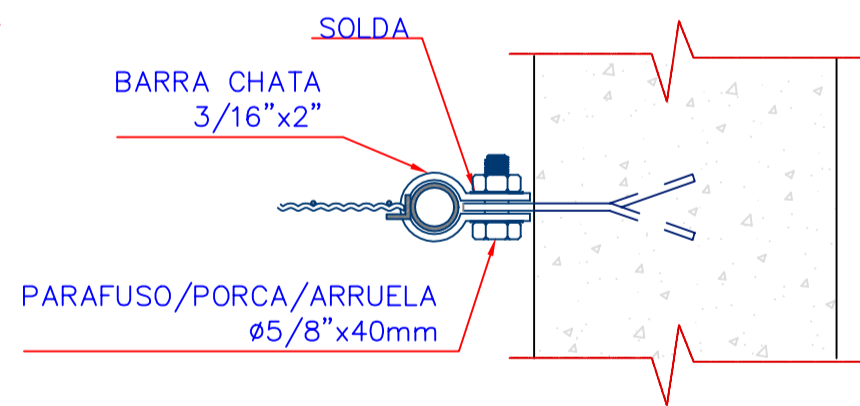
9 DETALHE DO TRINCO INFERIOR DO PORTÃO
ESCALA 1:5



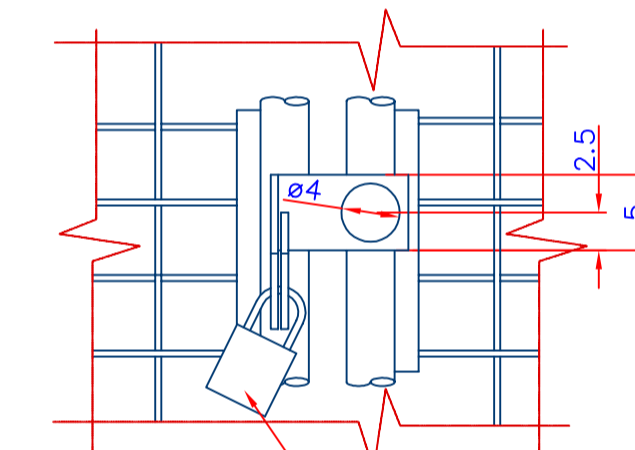
10 CORTE TRINCO INFERIOR
ESCALA 1:5



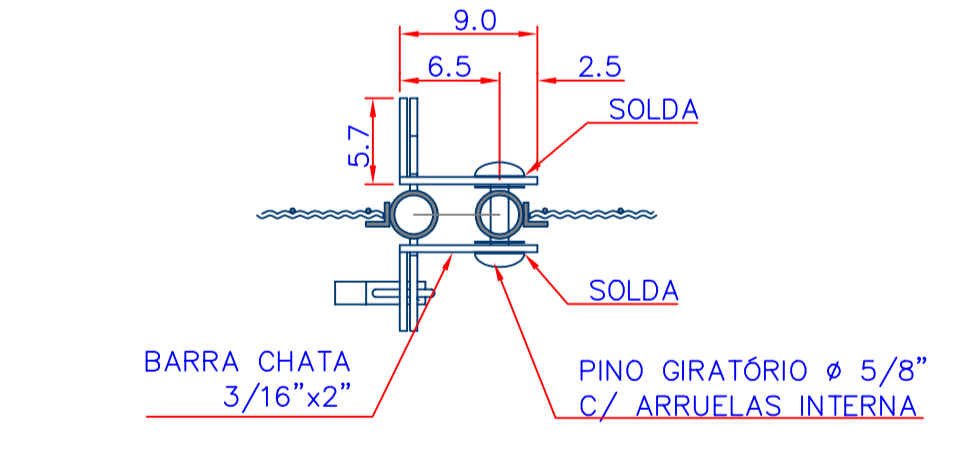
11 DETALHE DAS DOBRADIÇAS
ESCALA 1:5



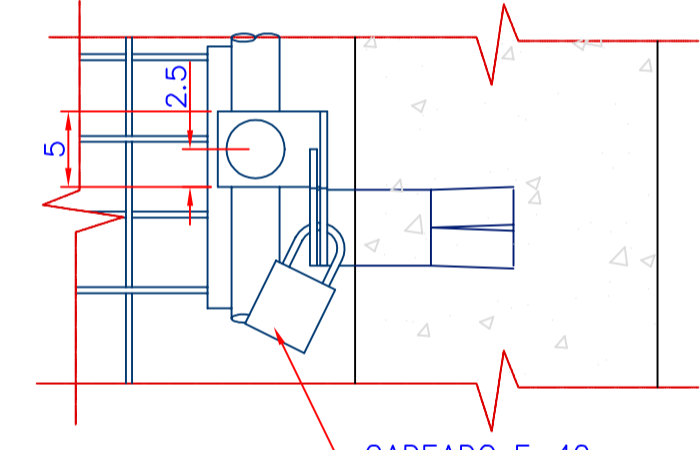
12 CORTE DAS DOBRADIÇAS
ESCALA 1:5



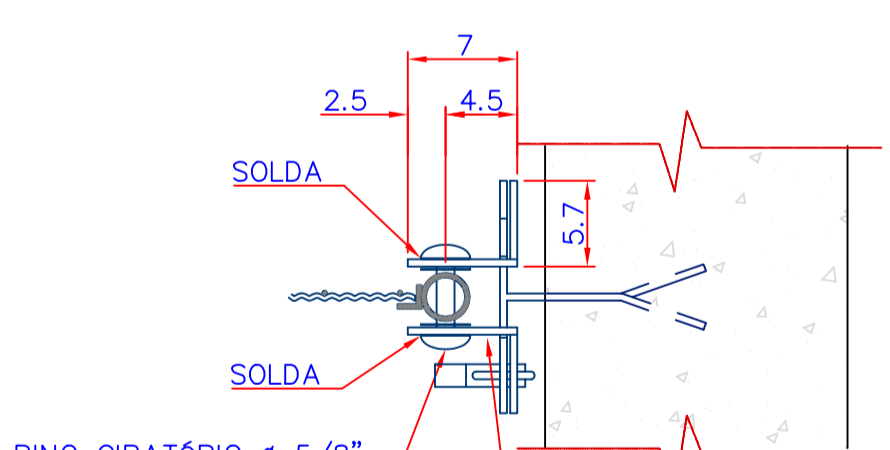
13 DET. TRINCO DO PORTÃO PARA VEÍCULOS
ESCALA 1:5



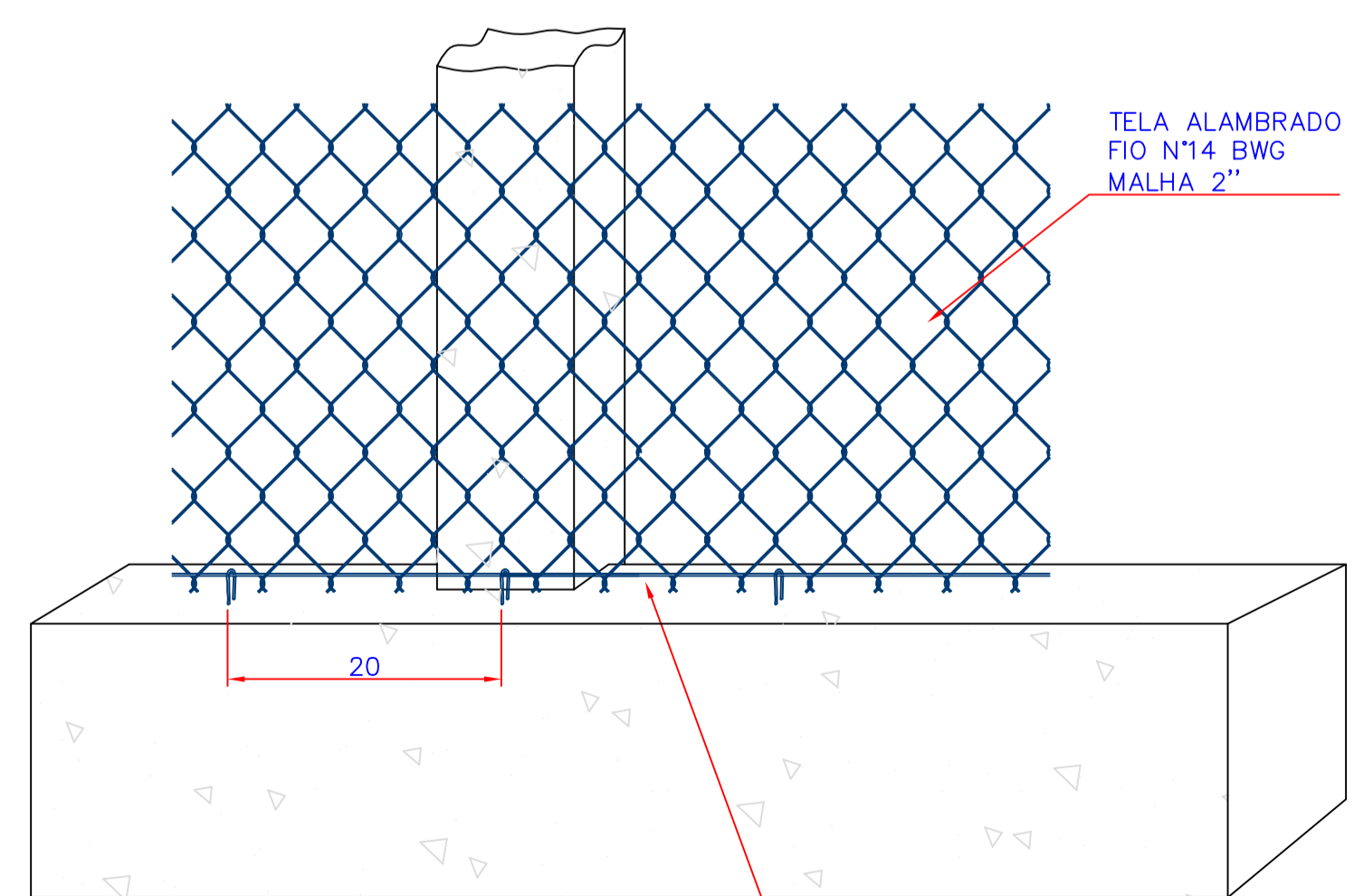
14 CORTE DO TRINCO DO PORTÃO P/ VEÍCULOS
ESCALA 1:5



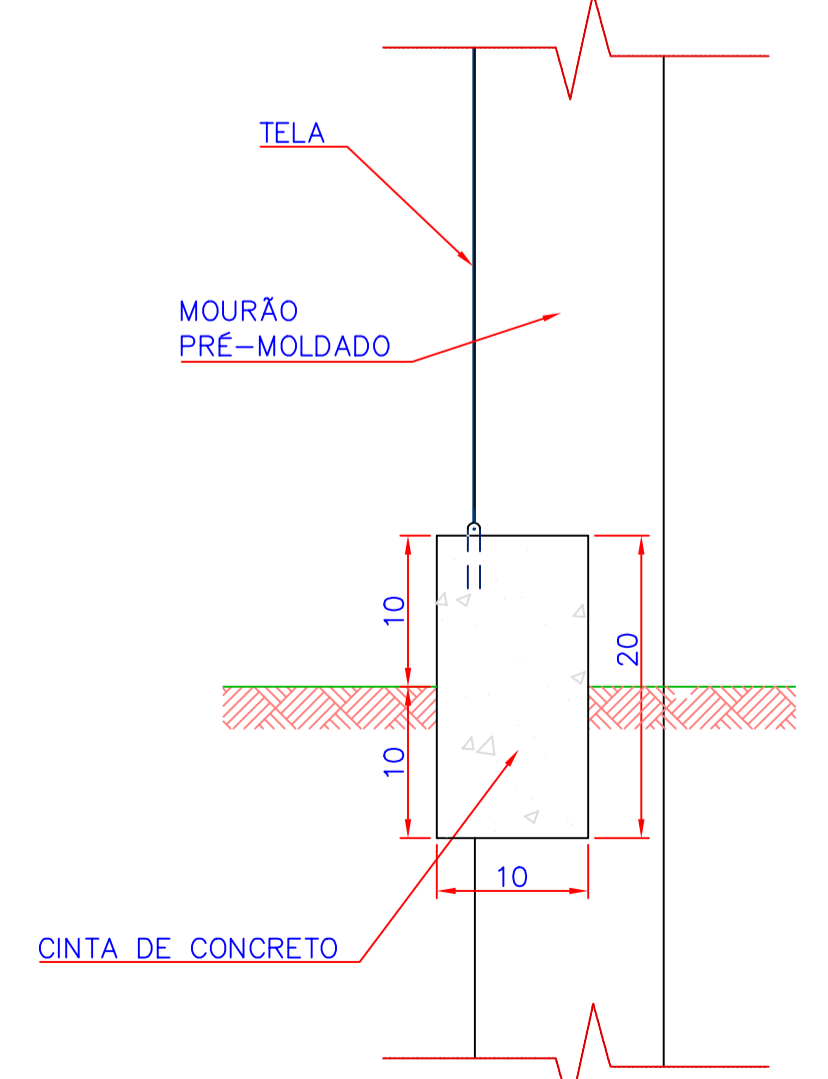
16 DET. TRINCO DO PORTÃO P/ PEDESTRES
ESCALA 1:5



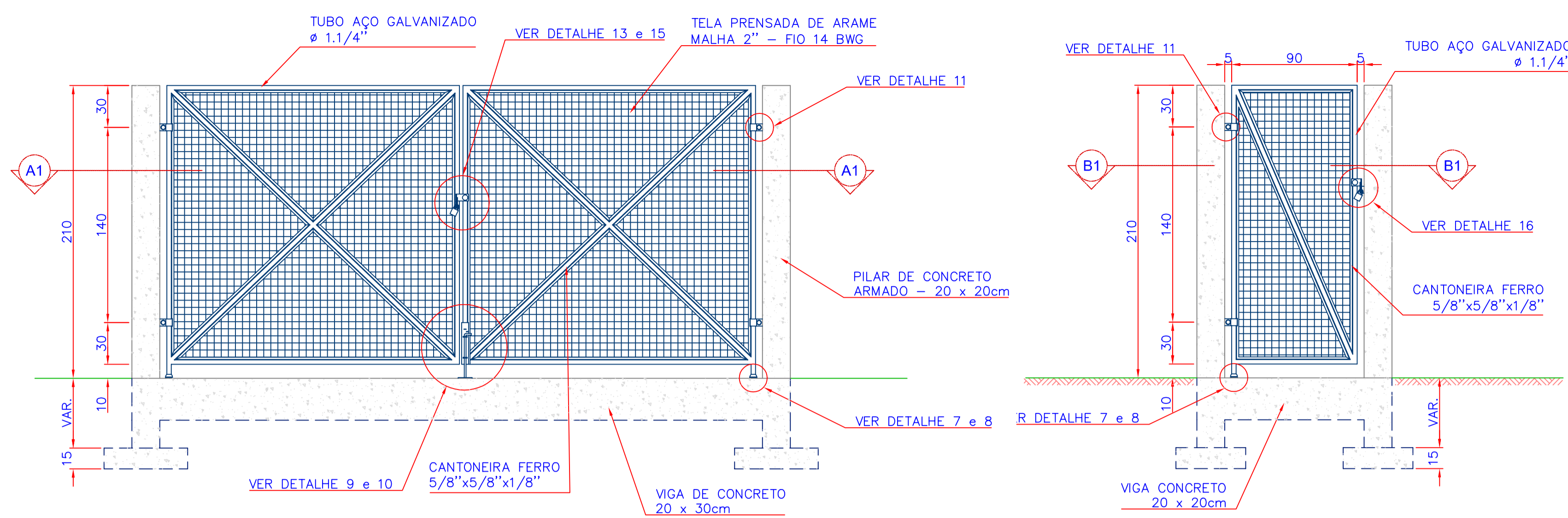
17 CORTE DO TRINCO DO PORTÃO P/ PEDESTRES
ESCALA 1:5



18 DETALHE DA FIXAÇÃO DA TELA NA CINTA
ESCALA 1:10

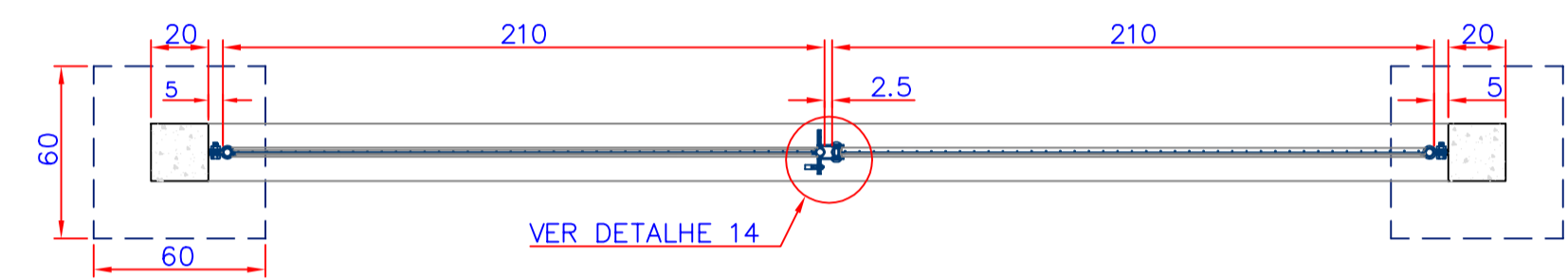


19 FIXAÇÃO DA TELA NA CINTA
ESCALA 1:10

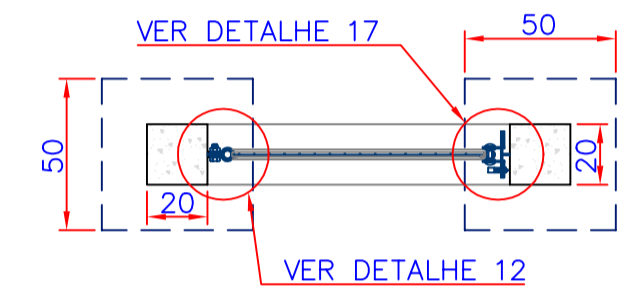


3 VISTA FRONTAL DO PORTÃO PARA VEÍCULOS
ESCALA 1:25

5 VISTA FRONTAL DO PORTÃO PARA PEDESTRES
ESCALA 1:25



4 SECÇÃO A1 - A1
ESCALA 1:25



6 SECÇÃO B1 - B1
ESCALA 1:25

NOTAS:
1) OS PORTÕES DEVERÃO SER PINTADOS COM ESMALTE SINTÉTICO NA COR AZUL PADRÃO CASAN.
2) OS MOURÕES E CINTAS DEVERÃO SER PINTADOS COM CAIAÇÃO NA COR BRANCA.
3) OS PILARETES DEVERÃO SER PINTADOS COM TINTA PVA NA COR BRANCA.

Nº	REVISÃO	DATA	LOGOMARCA DA CONSULTORIA

COMPANHIA CATARINENSE DE ÁGUAS E SANEAMENTO
BOM JARDIM DA SERRA - SC
 ARQUITETÔNICO
 SISTEMA DE ABASTECIMENTO DE ÁGUA

ESTAÇÃO DE TRATAMENTO DE ÁGUA
DETALHES DAS CERCAS E PORTÕES

PROJETO: ESCALA INDICADA
 VISTOS: TOPOGRAFIA
 DESENHO: DATA: MAR/01
 DATA TOP: MAR/01
 FOLHA Nº: 05045-SAA-ETA-ARQ/0240