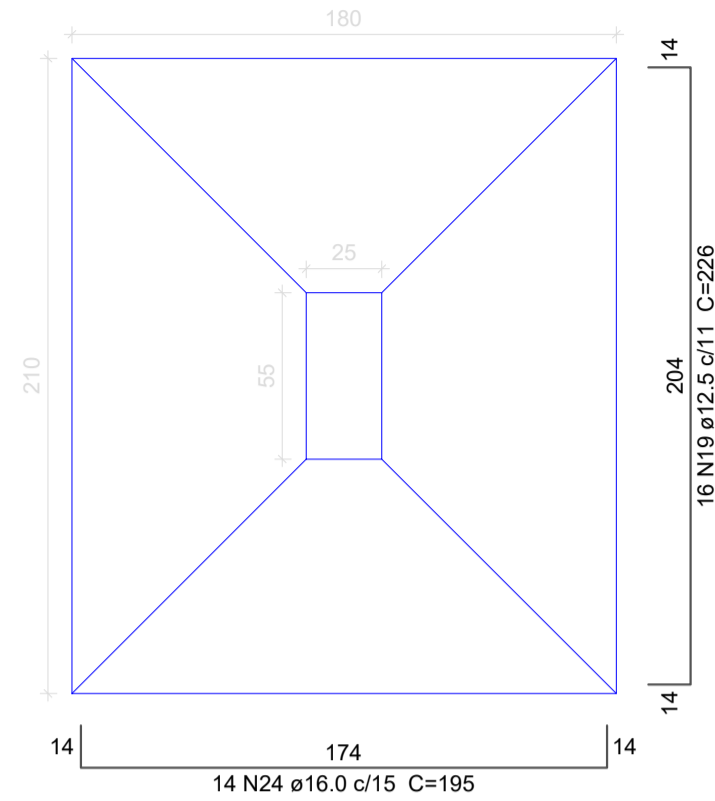
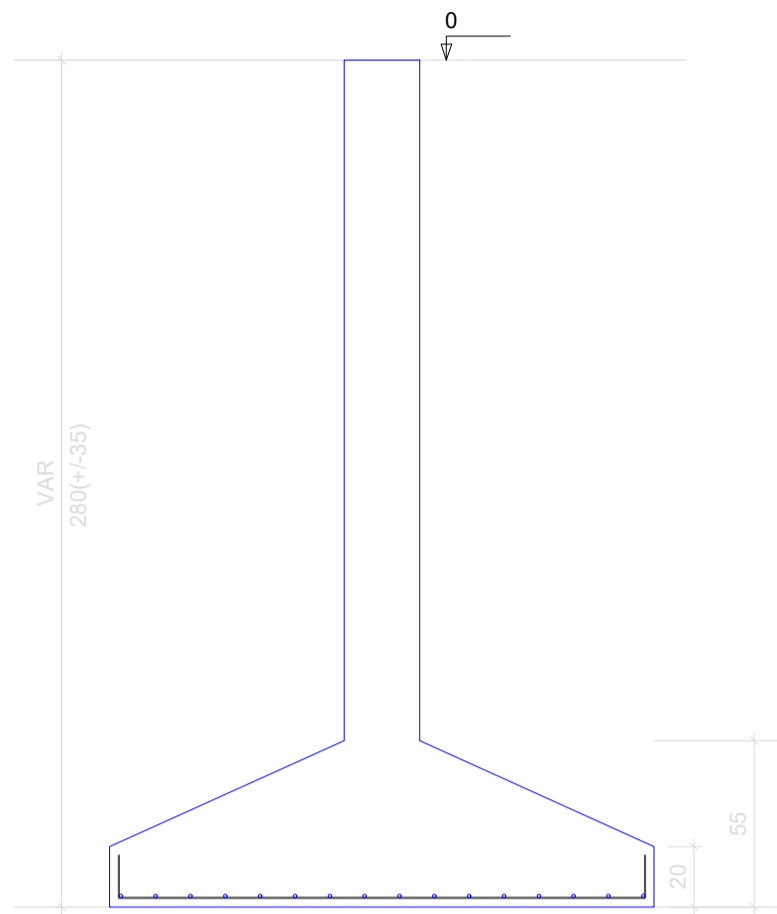


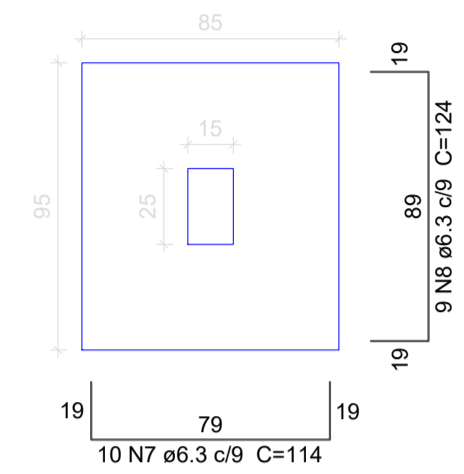
S37
PLANTA
ESC 1:25



CORTE
ESC 1:25

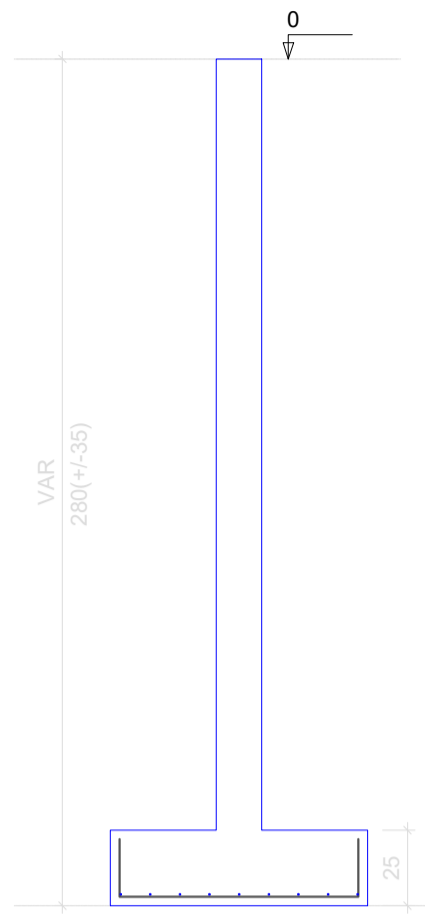


S38
PLANTA
ESC 1:25

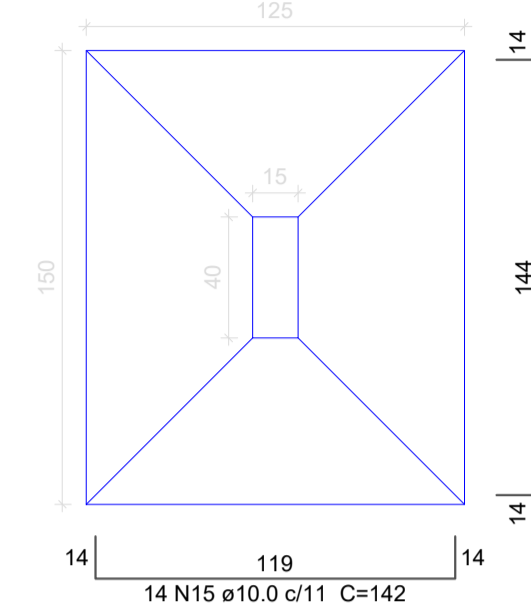


Solo com capacidade de suporte > 1.50 kgf/cm²
Solo compactado sobre a sapata
peso específico > 1600.00 kg/m³

CORTE
ESC 1:25

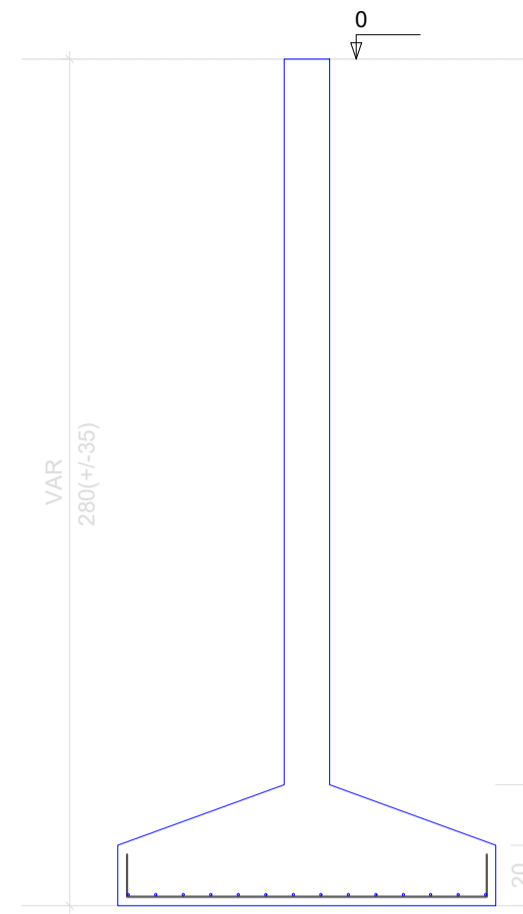


S39
PLANTA
ESC 1:25

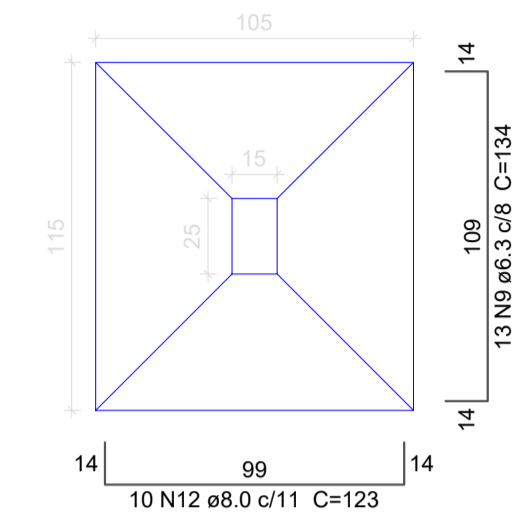


Solo com capacidade de suporte > 1.50 kgf/cm²
Solo compactado sobre a sapata
peso específico > 1600.00 kg/m³

CORTE
ESC 1:25

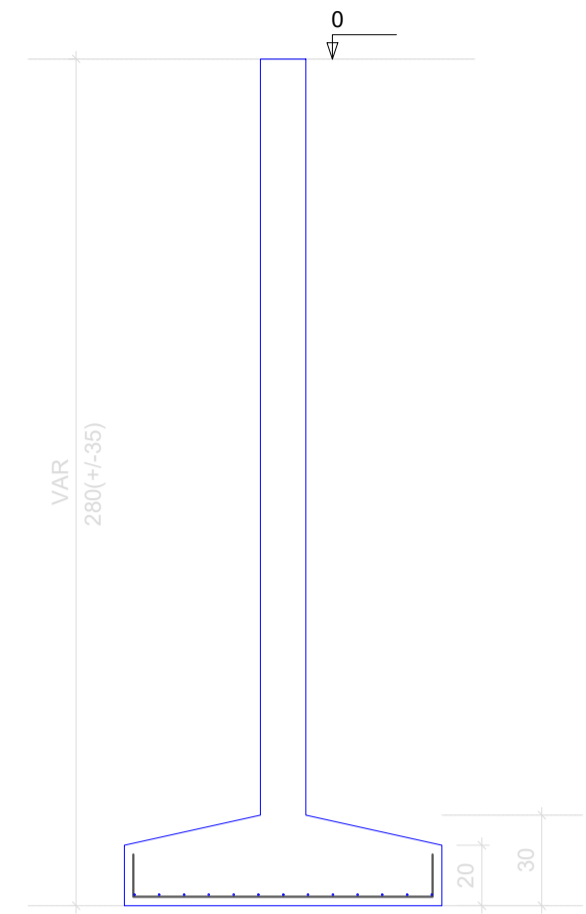


S42=S52=S53
PLANTA
ESC 1:25

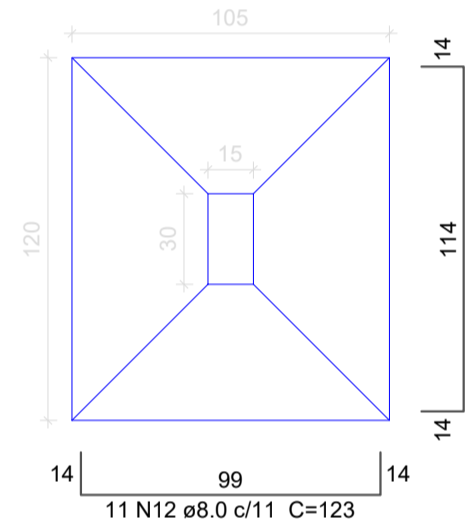


Solo com capacidade de suporte > 1.50 kgf/cm²
Solo compactado sobre a sapata
peso específico > 1600.00 kg/m³

CORTE
ESC 1:25

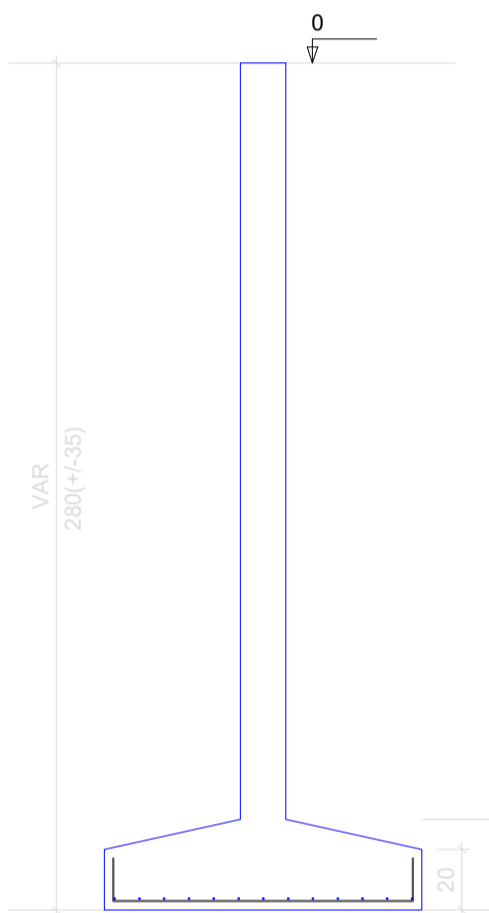


S43
PLANTA
ESC 1:25

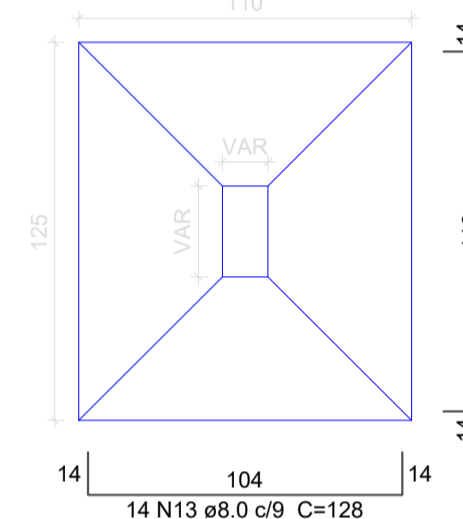


Solo com capacidade de suporte > 1.50 kgf/cm²
Solo compactado sobre a sapata
peso específico > 1600.00 kg/m³

CORTE
ESC 1:25

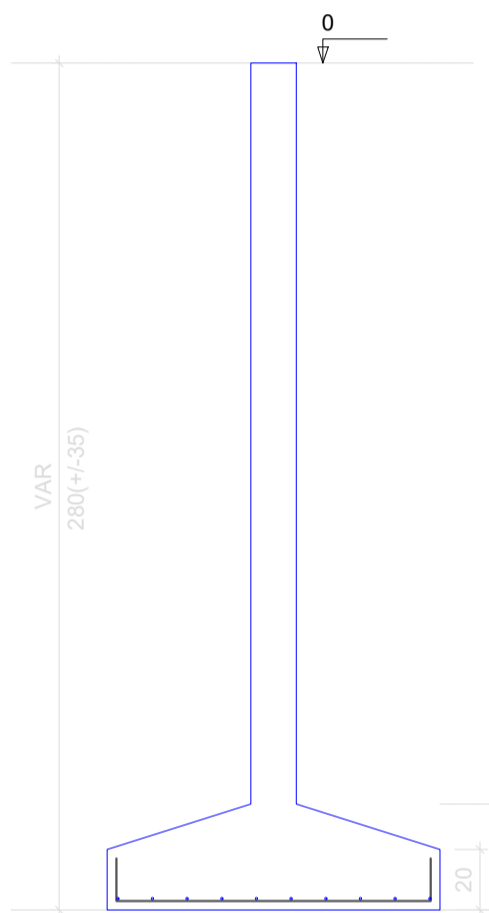


S46=S47=S50=S54
PLANTA
ESC 1:25

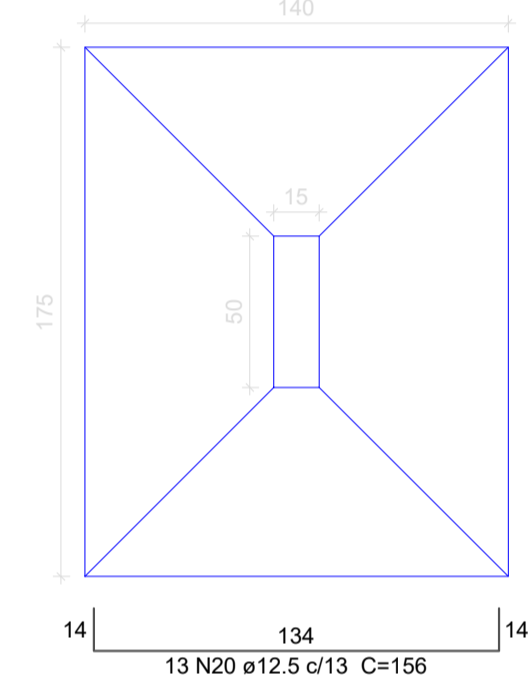


Solo com capacidade de suporte > 1.50 kgf/cm²
Solo compactado sobre a sapata
peso específico > 1600.00 kg/m³

CORTE
ESC 1:25

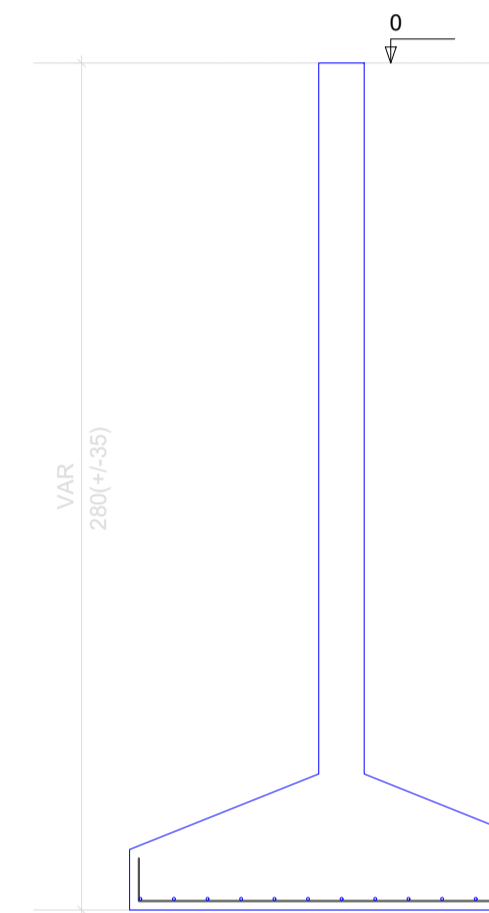


S48
PLANTA
ESC 1:25

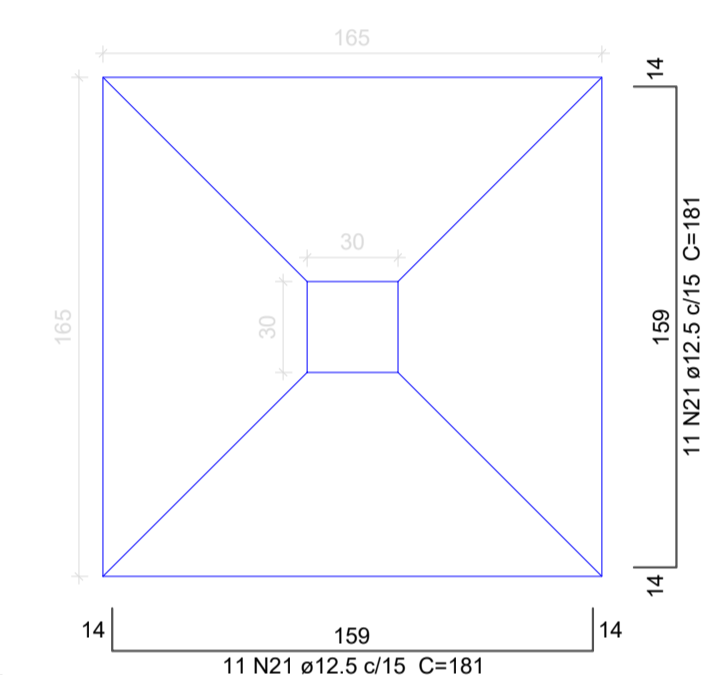


Solo com capacidade de suporte > 1.50 kgf/cm²
Solo compactado sobre a sapata
peso específico > 1600.00 kg/m³

CORTE
ESC 1:25

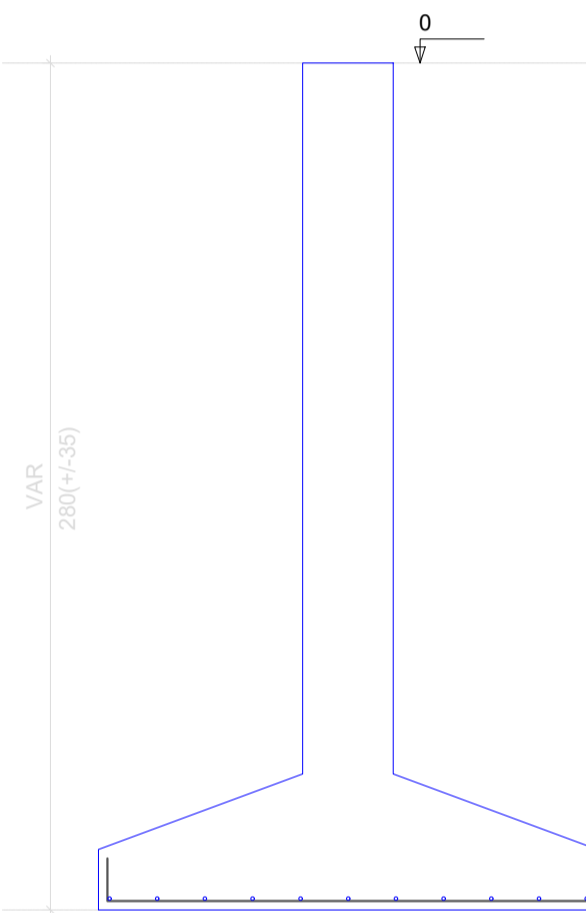


S59=S60
PLANTA
ESC 1:25

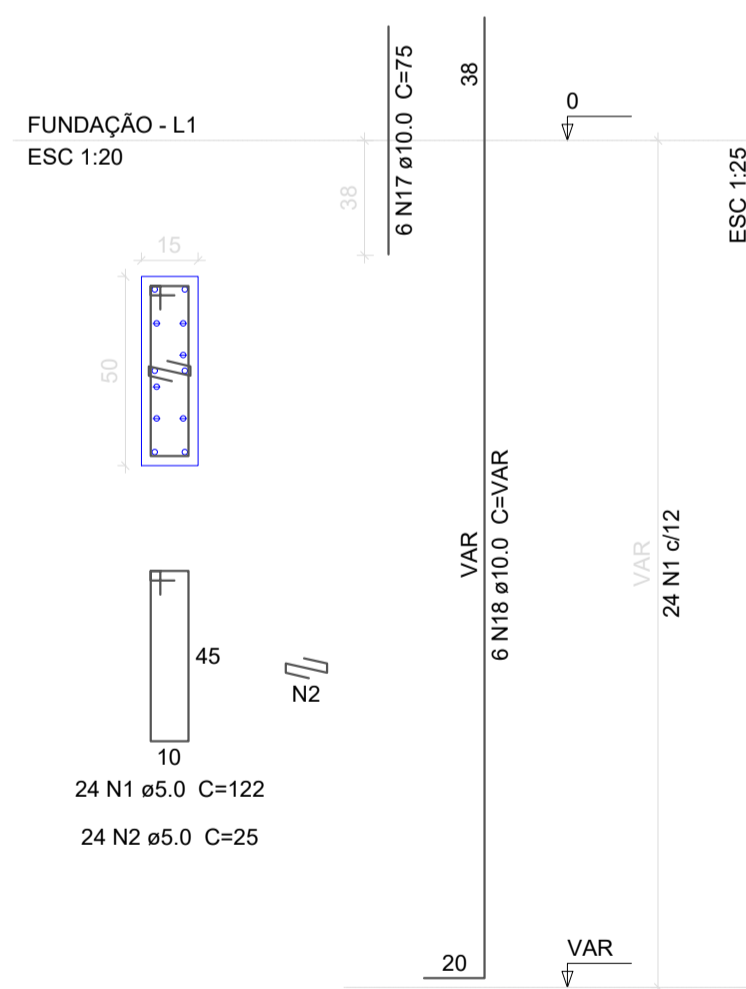


Solo com capacidade de suporte > 1.50 kgf/cm²
Solo compactado sobre a sapata
peso específico > 1600.00 kg/m³

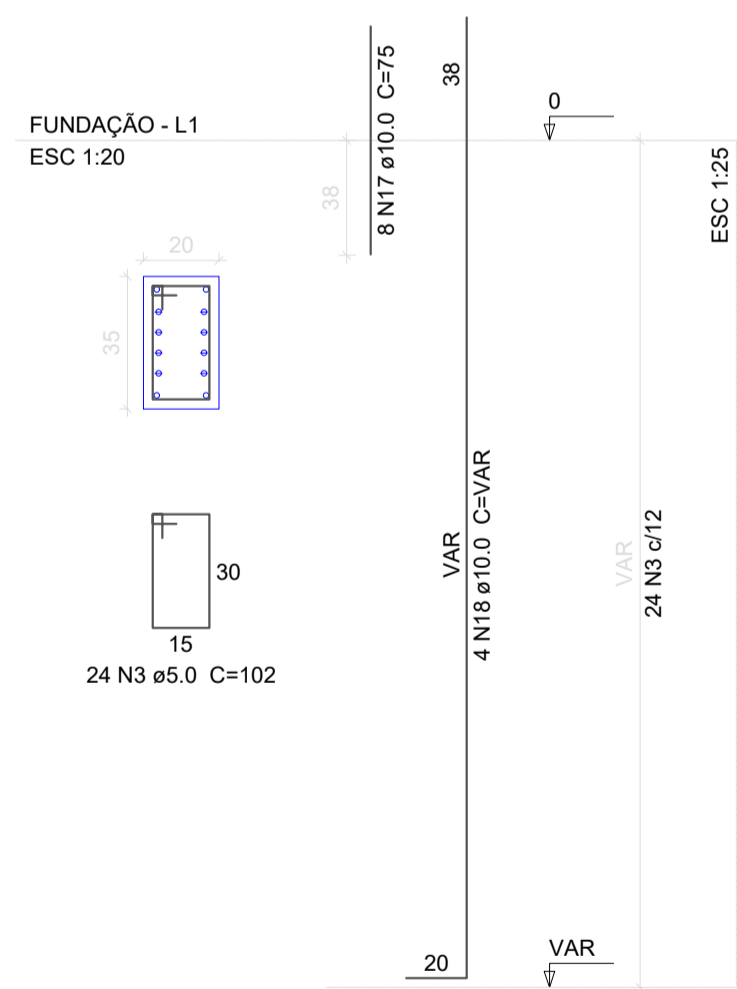
CORTE
ESC 1:25



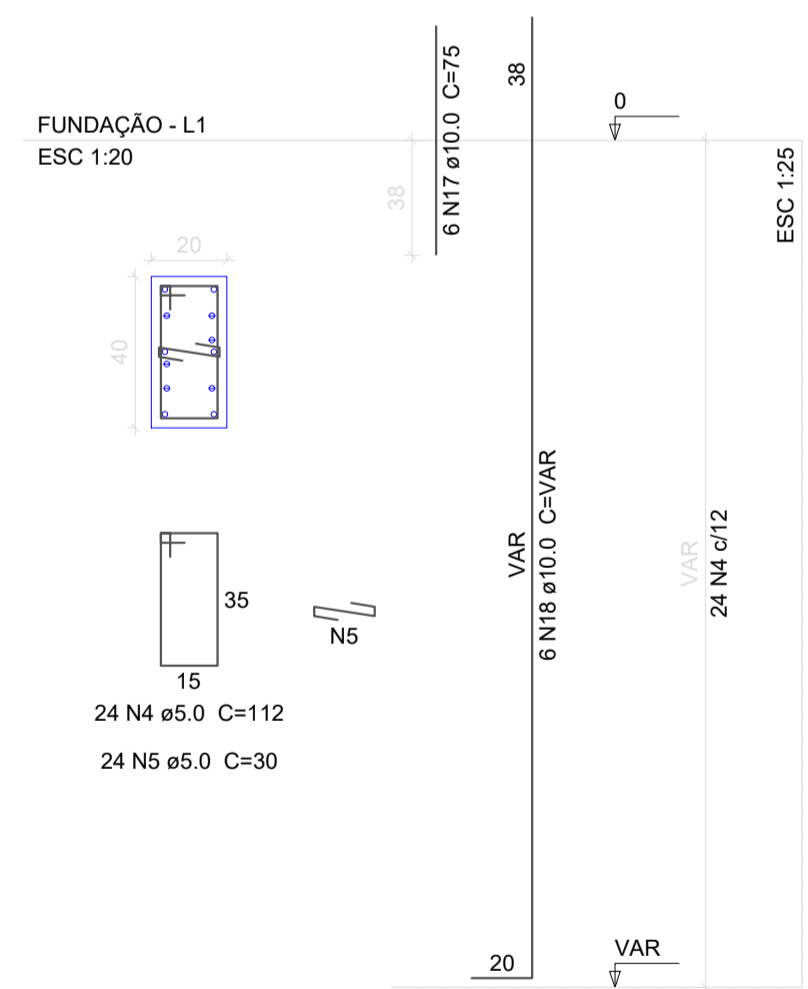
P1=P4=P48



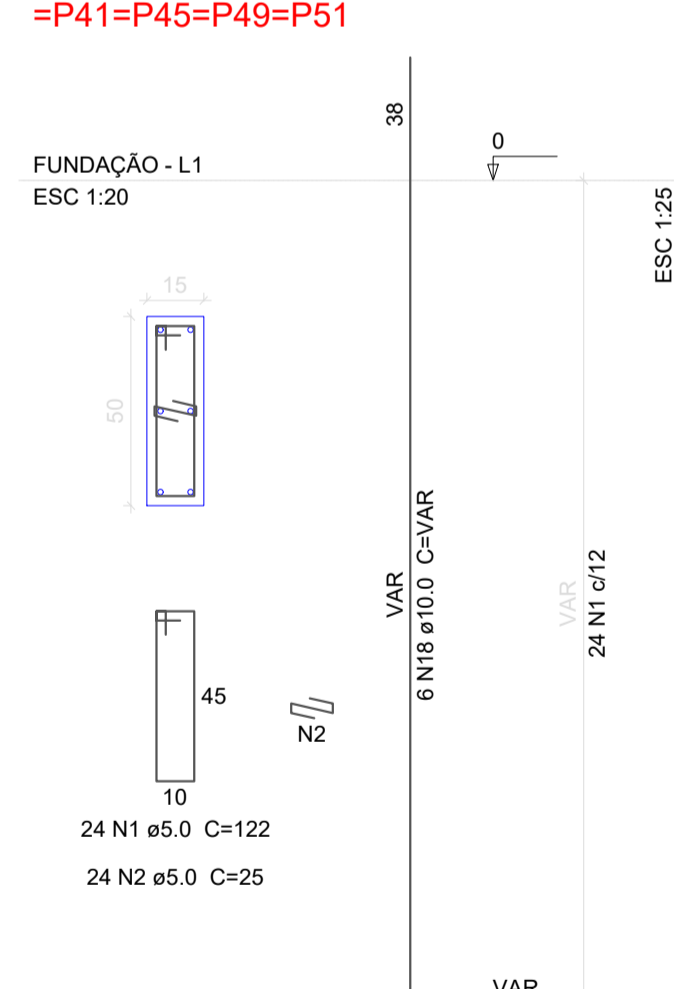
P2



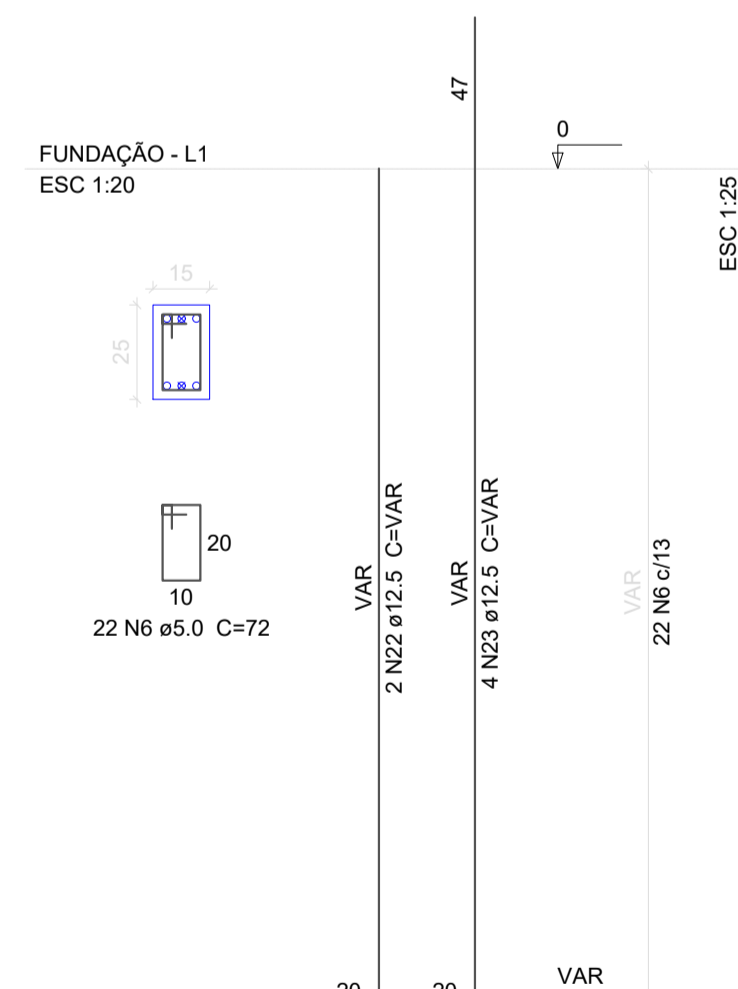
P3



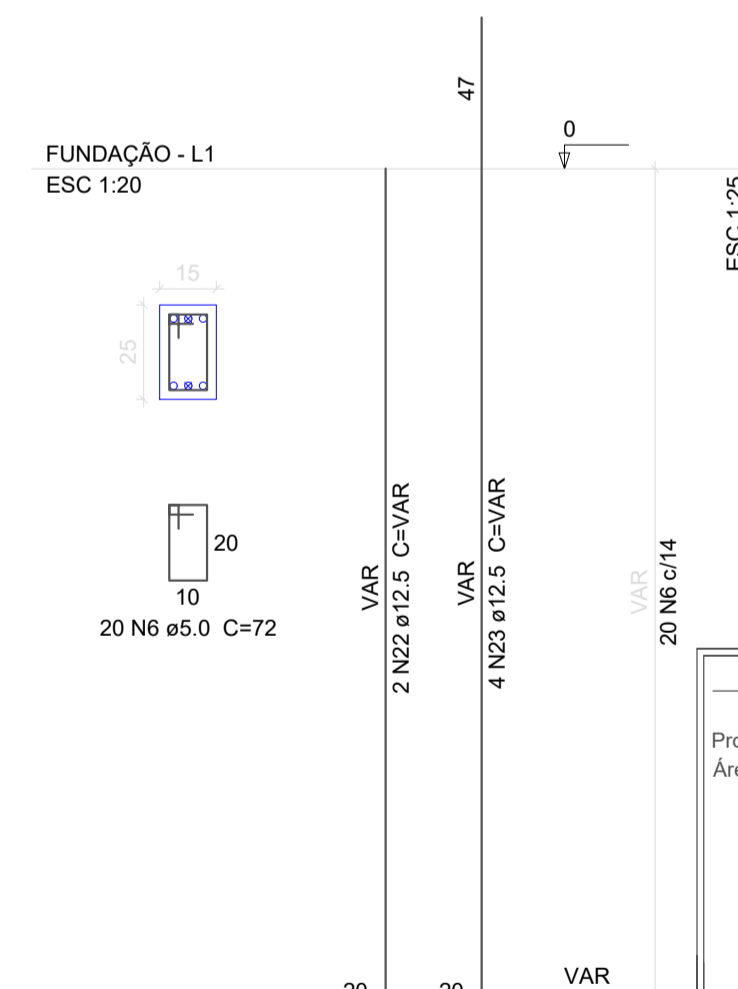
P5=P8=P9=P12=P13=P16=P17=P20=P31=P35 =P41=P45=P49=P51



P6=P10=P11



P7



Relação do aço

3xP1	P2	P3
14xP5	3xP6	P7
S37	S38	S39
S43	4xS47	S48
3xS52	2xS59	

AÇO	N	DIAM	Q	UNIT (cm)	C.TOTAL (cm)
CA60	1	5.0	408	122	49776
	2	5.0	408	25	10200
	3	5.0	24	102	2448
	4	5.0	24	112	2688
	5	5.0	24	30	720
	6	5.0	86	72	6192
	7	6.3	10	114	1140
	8	6.3	9	124	1116
	9	6.3	39	134	5226
	10	6.3	13	139	1807
CA50	11	8.0	14	168	2352
	12	8.0	41	123	5043
	13	8.0	56	128	7168
	14	8.0	40	143	5720
	15	10.0	14	142	1988
	16	10.0	13	192	2496
	17	10.0	32	75	2400
	18	10.0	112	VAR	VAR
	19	12.5	16	226	3616
	20	12.5	13	156	2028
	21	12.5	44	181	7964
	22	12.5	8	VAR	VAR
	23	12.5	16	VAR	VAR
	24	16.0	14	195	2730

Resumo do aço

AÇO	DIAM	C.TOTAL (m)	PESO + 10 % (kg)
CA50	6.3	92.9	25
	8.0	202.9	88
	10.0	445.2	301.9
	12.5	214.7	227.4
	16.0	27.3	47.4
CA60	5.0	720.3	122.1
PESO TOTAL			
CA50		689.8	
CA60		122.1	

Vol. de concreto total (C-25) = 11.42 m³
Área de forma total = 92.04 m²

QUADRO DE ÁREAS:		OBRA:
Projeto	1.241,83m ²	ESCOLA DE EDUCAÇÃO BÁSICA
Área do Terreno	2673,00 m ²	
ENDEREÇO:		
RUA Padre Otávio de Lorenzi, S/N, BAIRRO COHAB		
Bom Jardim da Serra - SC		

RESP. TÉCNICO:
Eng. Civil Jorge E. Batista Muniz
CREA-SC 143378-1

PROPRIETÁRIO:
Prefeitura Municipal de Bom Jardim da Serra
CNPJ: 82.844.754/0001-92

DESCRÇÃO:	PRANCHA:
PROJETO ESTRUTURAL FUNDAÇÃO SAPATAS PILARES	6/27

ESCALA:	ÁREA TOTAL:	DATA:	FORMATO PRANCHA:	REVISÃO:
INDICADA	1.241,83m ²	Novembro/2021	A1(841X594mm)	JEBM-17/11/21