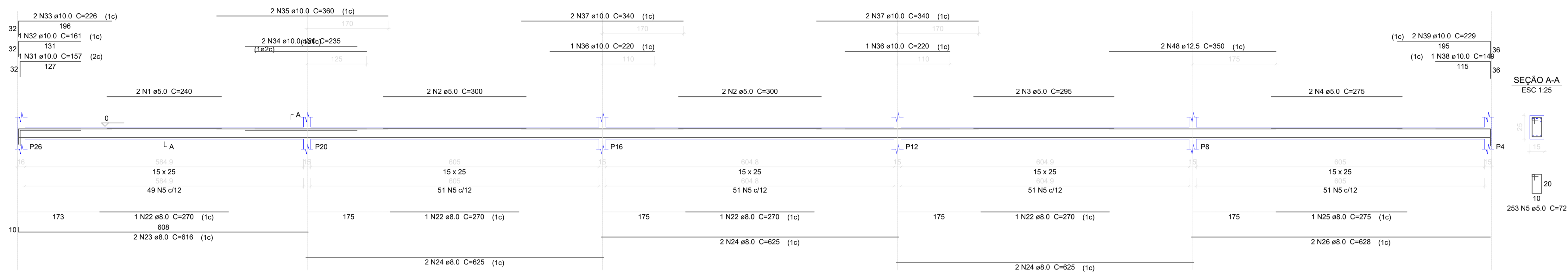
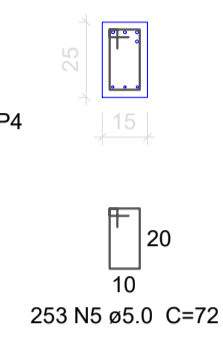


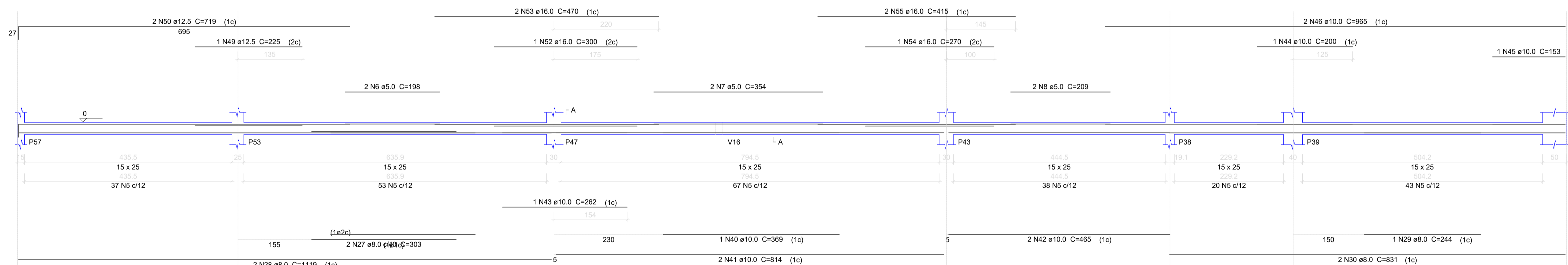
**V30**  
ESC 1:50



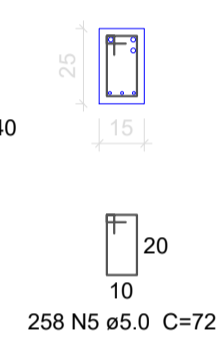
SEÇÃO A-A  
ESC 1:25



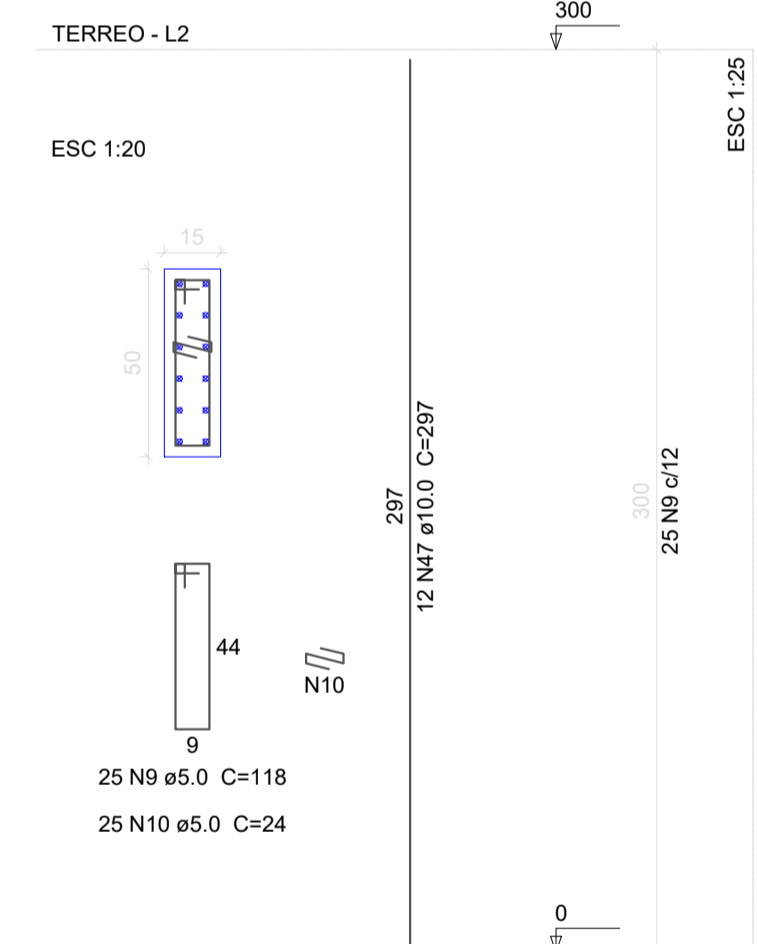
**V31**  
ESC 1:50



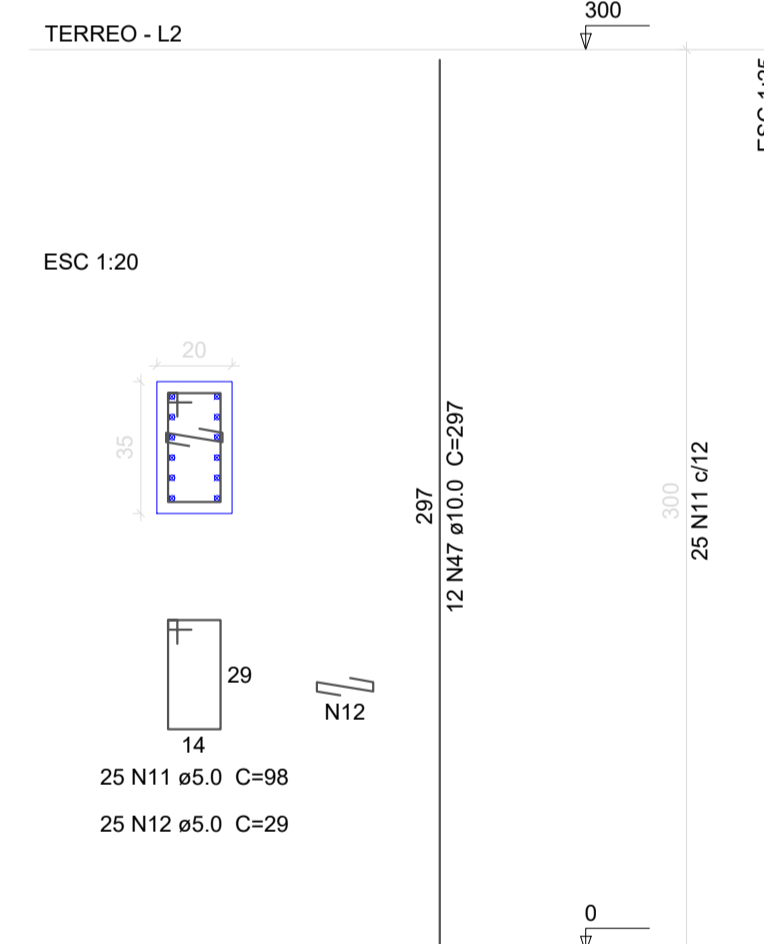
SEÇÃO A-A  
ESC 1:25



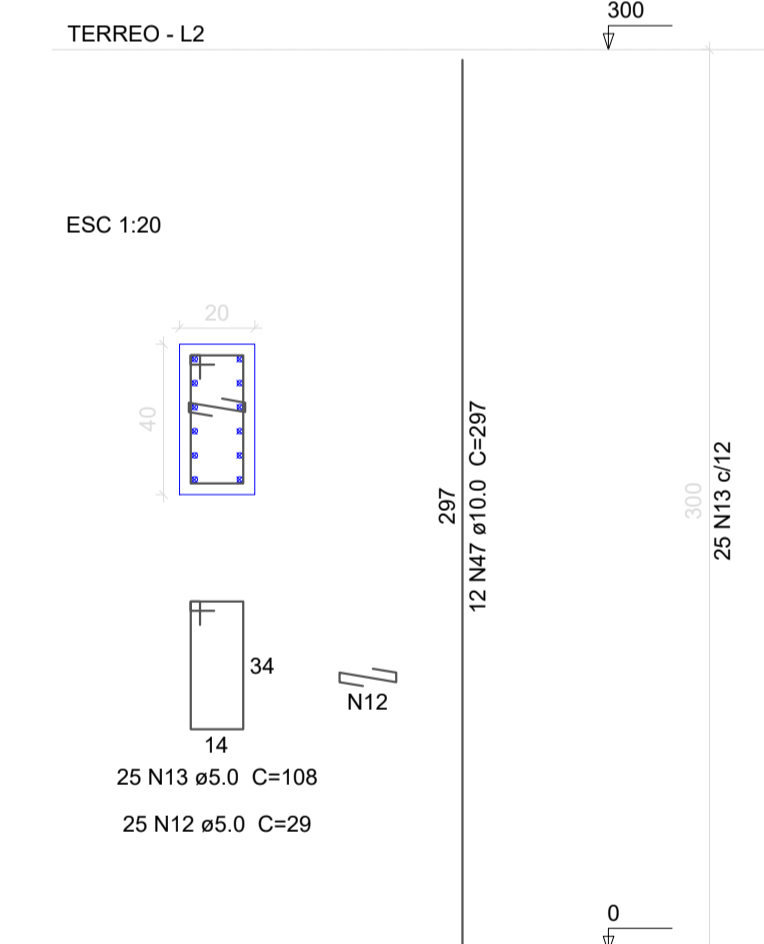
**P1=P4=P48**



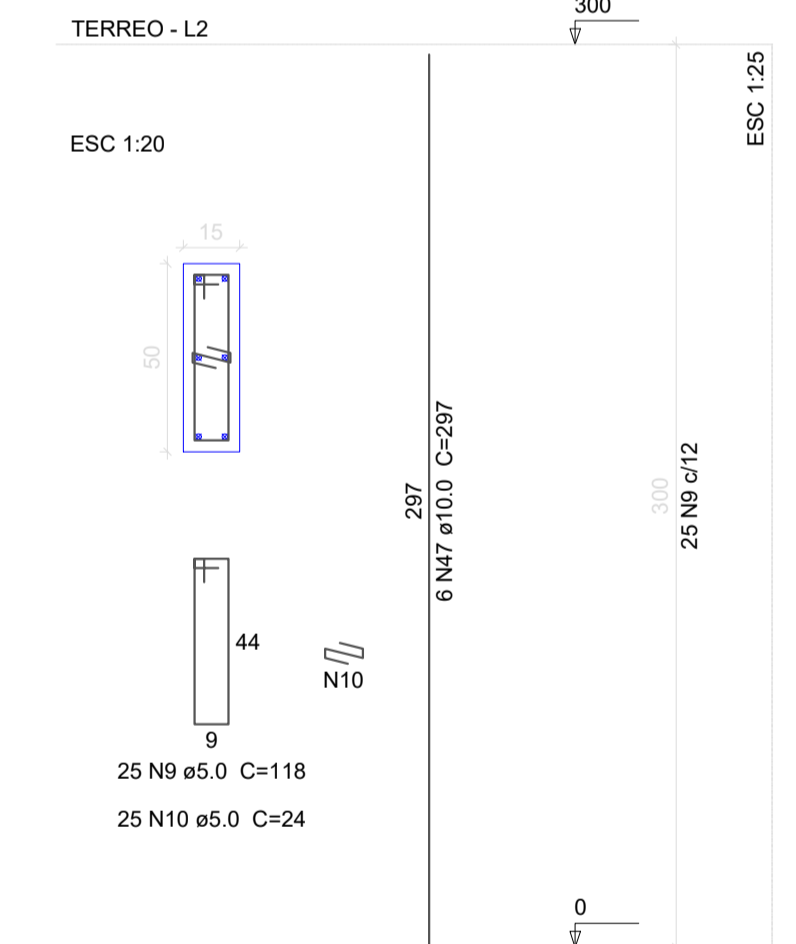
**P2**



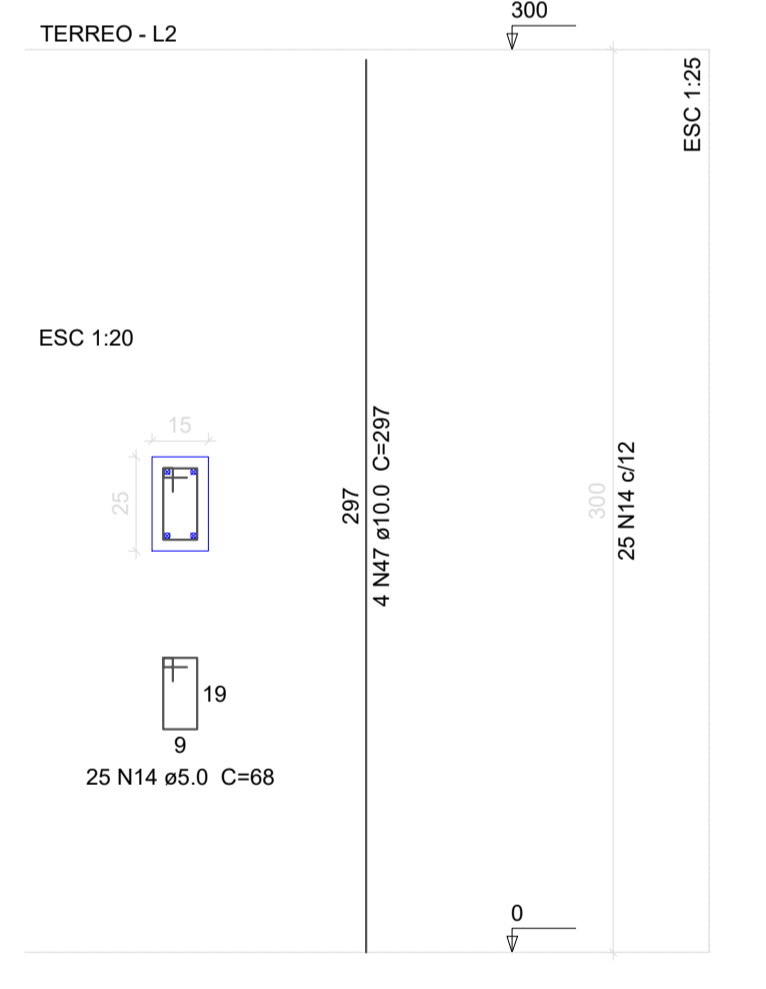
**P3**



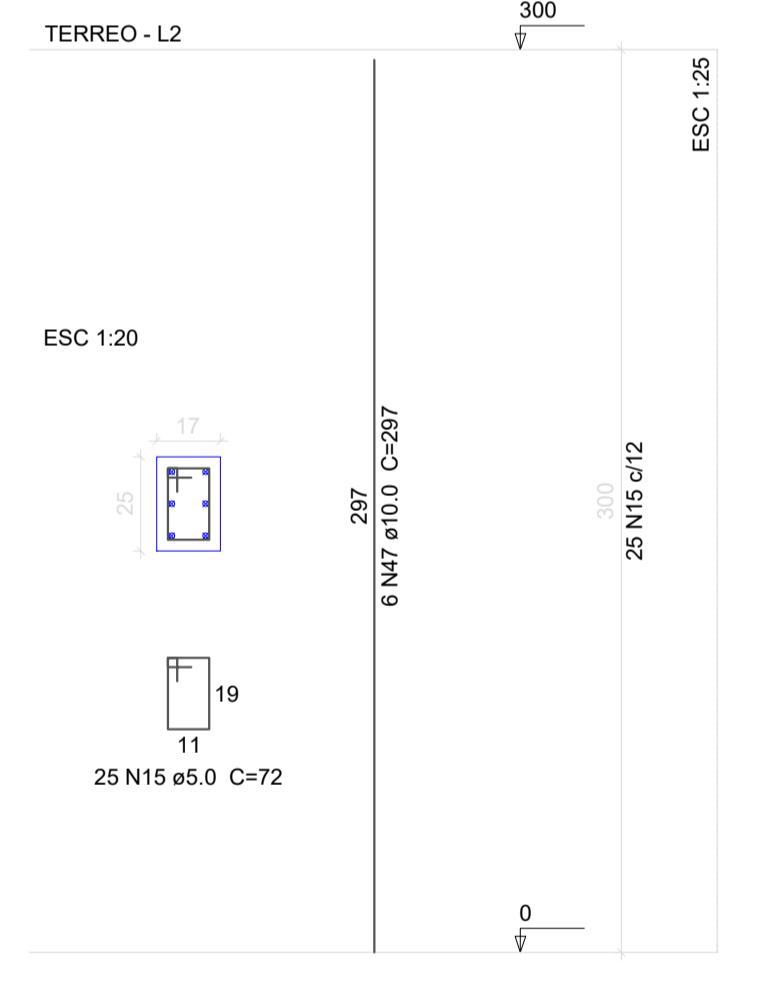
**P5=P8=P9=P12=P13=P16=P17=P20=P35=P41=P45=P49=P51=P55**



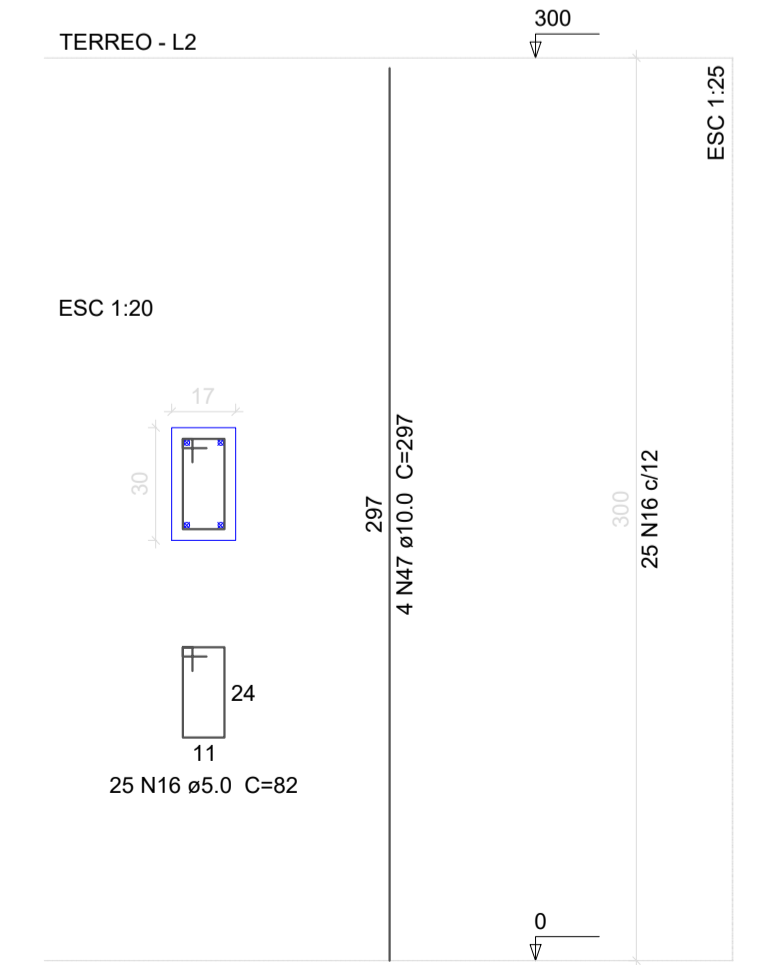
**P6=P7=P10=P11=P14=P15=P46**



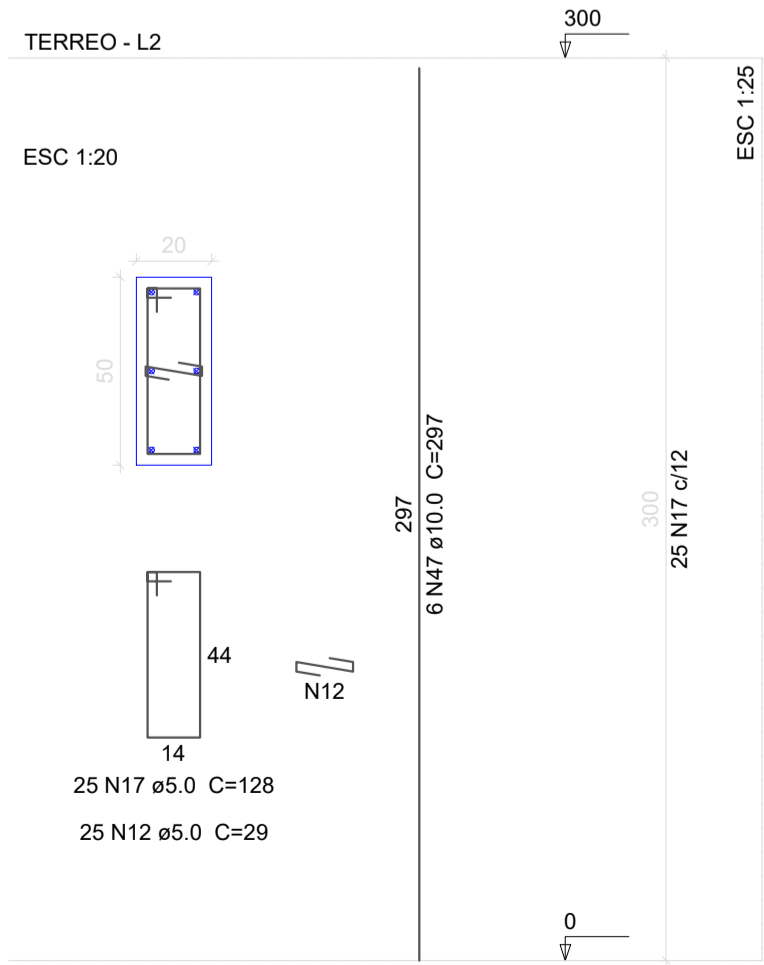
**P18**



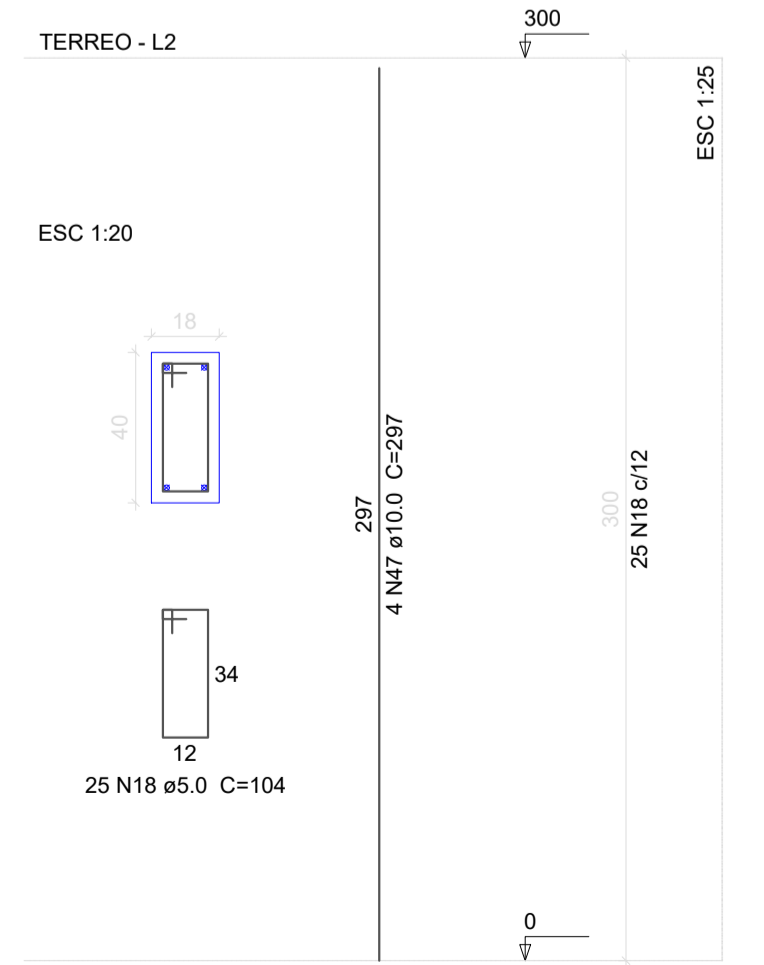
**P19**



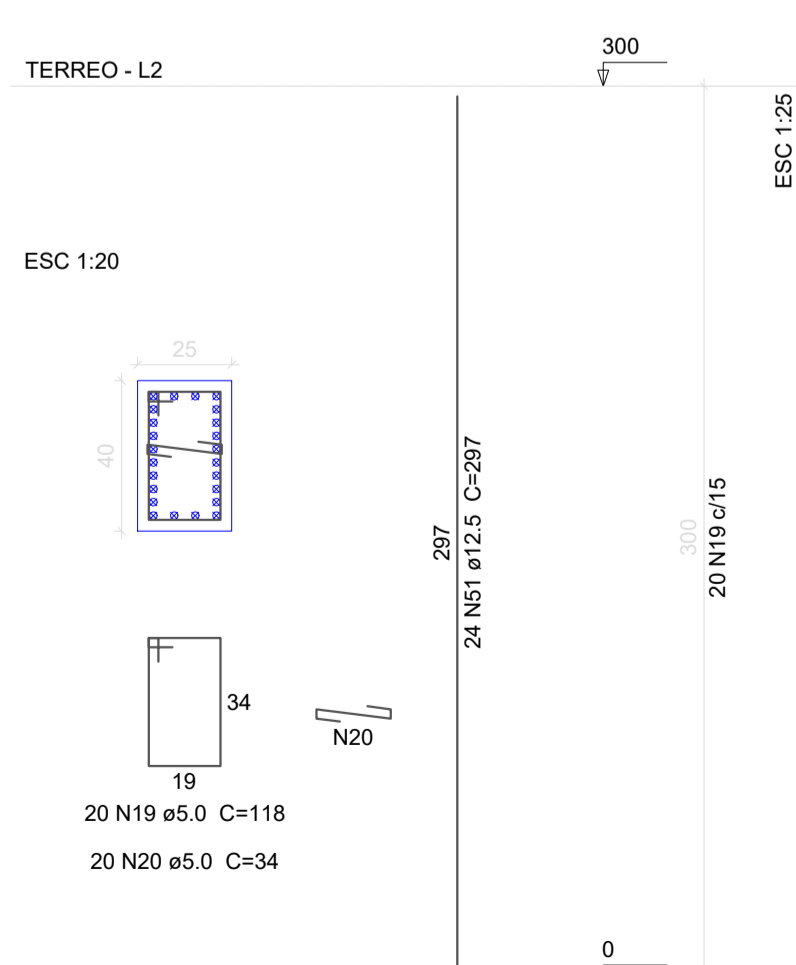
**P21**



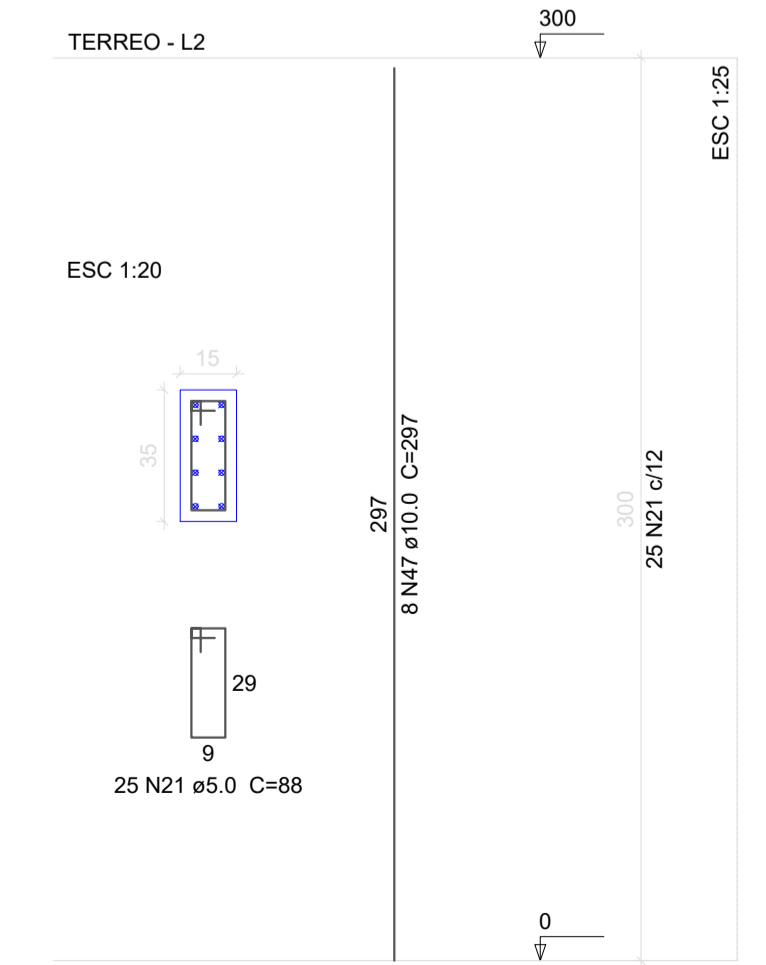
**P22**



**P23**



**P24**



**Relação do aço**

Função:	V30	V31
Terreno:	3xP1	P2
	P3	14xP5
	7xP6	P18
	P19	P21
	P22	P23
	P24	

ACO	N	DIAM	Q	UNIT (cm)	C.TOTAL (cm)
CA60	1	5.0	2	240	480
	2	5.0	4	300	1200
	3	5.0	2	295	590
	4	5.0	2	275	550
	5	5.0	1	511	36792
	6	5.0	2	198	396
	7	5.0	2	354	708
	8	5.0	2	209	418
	9	5.0	425	118	50150
	10	5.0	425	24	10200
	11	5.0	25	98	2450
	12	5.0	75	29	2175
	13	5.0	25	108	2700
	14	5.0	175	68	11900
	15	5.0	25	72	1800
	16	5.0	25	82	2050
	17	5.0	25	128	3200
	18	5.0	25	104	2600
	19	5.0	20	118	2360
	20	5.0	20	34	680
	21	5.0	25	88	2200
CA50	22	8.0	4	270	1080
	23	8.0	2	616	1232
	24	8.0	6	625	3750
	25	8.0	1	275	275
	26	8.0	2	628	1256
	27	8.0	2	303	606
	28	8.0	2	1119	2238
	29	8.0	1	244	244
	30	8.0	2	831	1662
	31	10.0	1	157	157
	32	10.0	1	161	161
	33	10.0	2	226	452
	34	10.0	2	235	470
	35	10.0	2	360	720
	36	10.0	2	220	440
	37	10.0	4	340	1360
	38	10.0	1	149	149
	39	10.0	2	229	458
	40	10.0	1	369	369
	41	10.0	2	814	1628
	42	10.0	2	465	930
	43	10.0	1	262	262
	44	10.0	1	200	200
	45	10.0	1	153	153
	46	10.0	2	965	1930
	47	10.0	200	297	59400
	48	12.5	2	350	700
	49	12.5	1	225	225
	50	12.5	2	719	1438
	51	12.5	24	297	7128
	52	16.0	1	300	300
	53	16.0	2	470	940
	54	16.0	1	270	270
	55	16.0	2	415	830

**Resumo do aço**

ACO	DIAM	C.TOTAL (m)	PESO + 10% (kg)
CA50	8.0	123.5	53.6
	10.0	692.4	469.6
	12.5	95	100.6
	16.0	23.4	40.6
CA60	5.0	1356	229.9
<b>PESO TOTAL</b>			
CA50		664.3	
CA60		229.9	

Vol. de concreto total (C-25) = 8.7 m³  
Área de forma total = 151.18 m²

QUADRO DE ÁREAS:	OBRA:
Projeto: 1.241,83m²	ESCOLA DE EDUCAÇÃO BÁSICA
Área do Terreno: 2673,00 m²	ENDEREÇO:
	RUA Padre Otávio de Lorenzi, S/N, BAIRRO COHAB Bom Jardim da Serra - SC

RESP. TÉCNICO:
Eng. Civil Jorge E. Batista Muniz
CREA-SC 143778-1
PROPRIETÁRIO:
Prefeitura Municipal de Bom Jardim da Serra
CNPJ: 82.844.754/0001-82

DESCRIÇÃO:	PRANCHA:
PROJETO ESTRUTURAL	
FUNDAÇÃO VIGAS TÉRREO PILARES	12/27

ESCALA:	ÁREA TOTAL:	DATA:	FORMATO PRANCHA:	REVISÃO:
INDICADA	1.241,83m²	Novembro/2021	A1(841X594mm)	JEBM-17/11/21