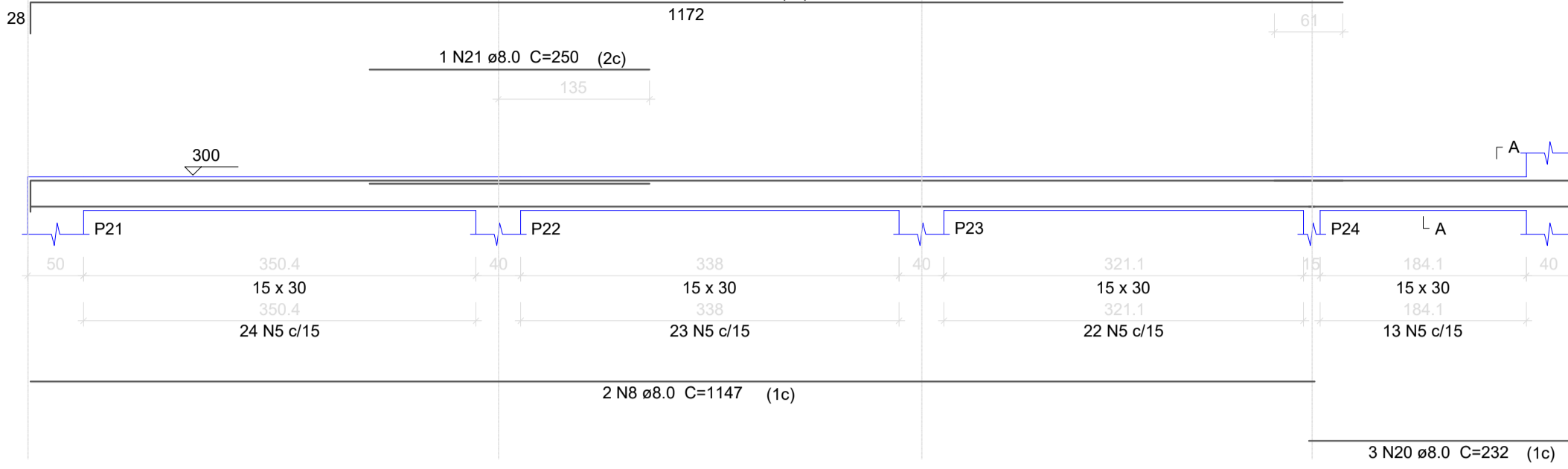


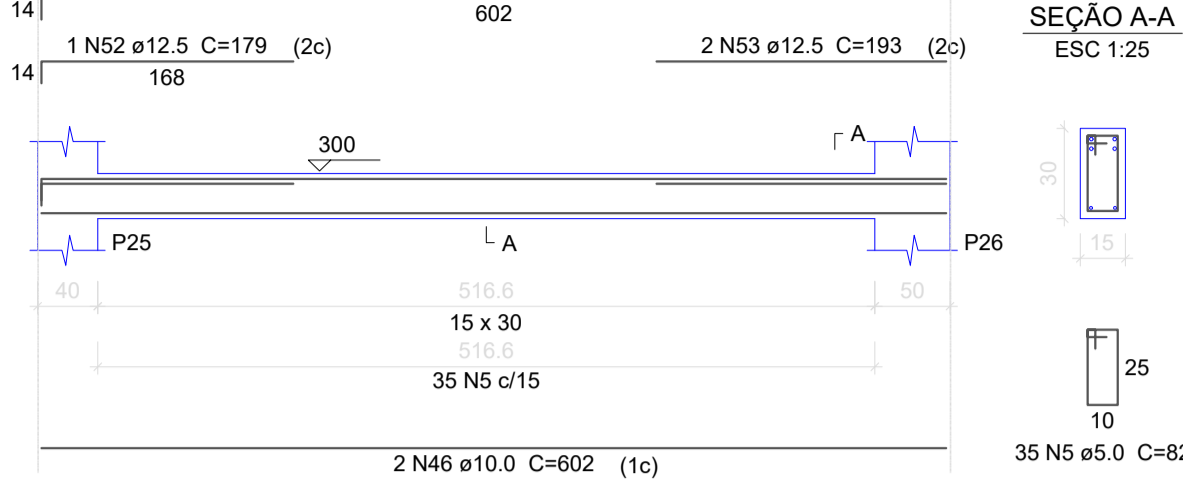
V6

ESC 1:50



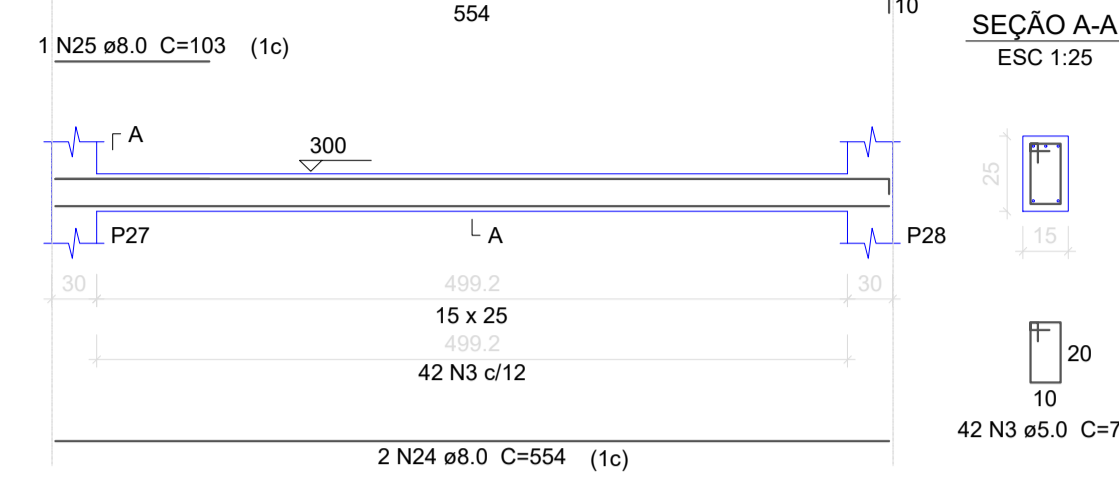
V7

ESC 1:50



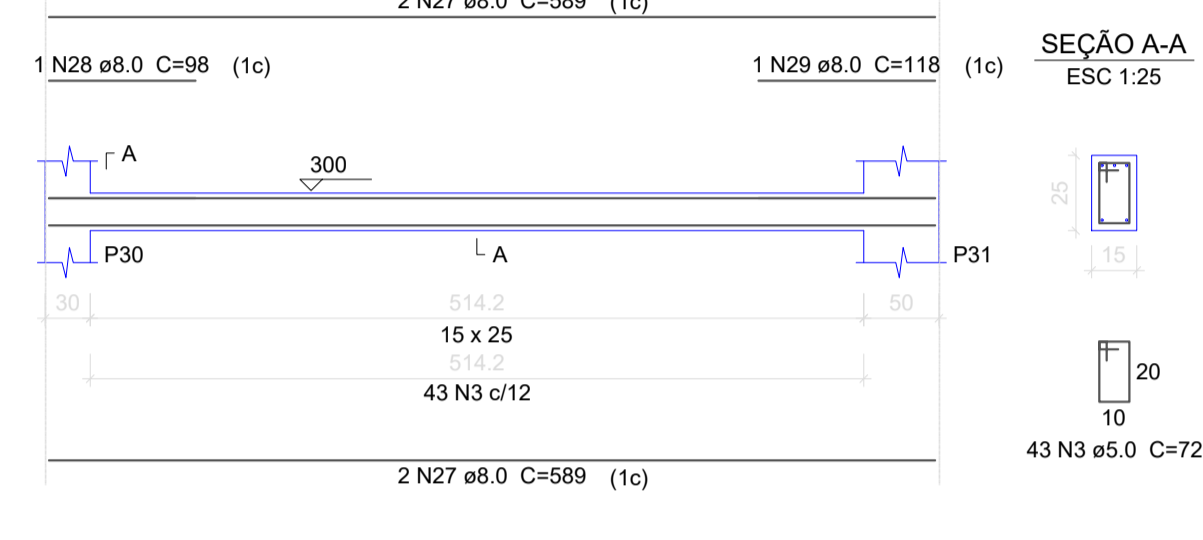
V8

ESC 1:50



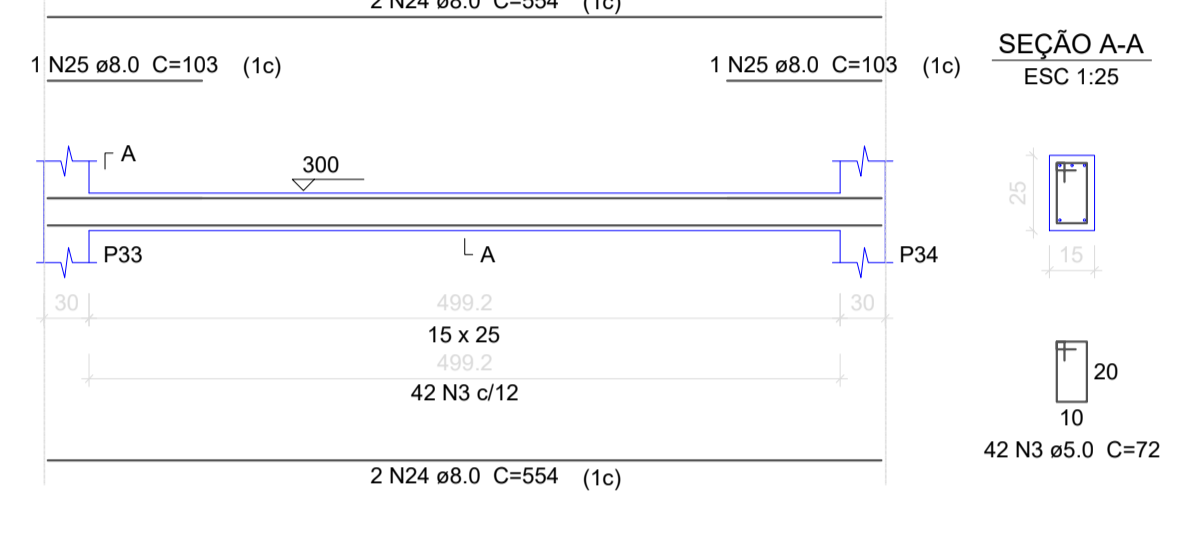
V9

ESC 1:50



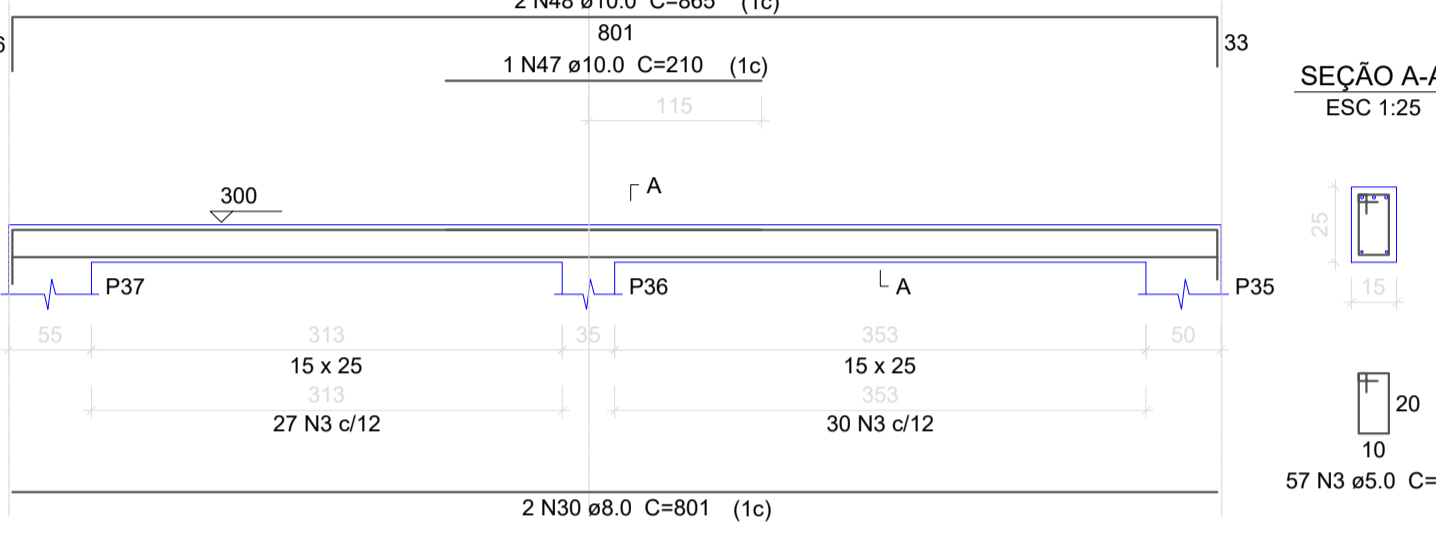
V10

ESC 1:50



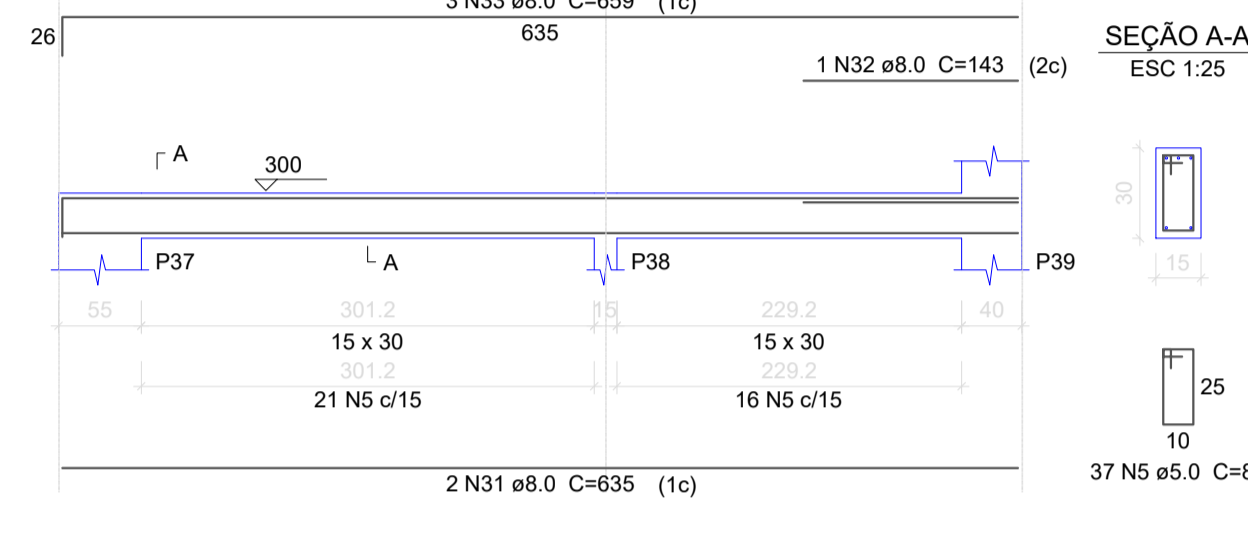
V11

ESC 1:50



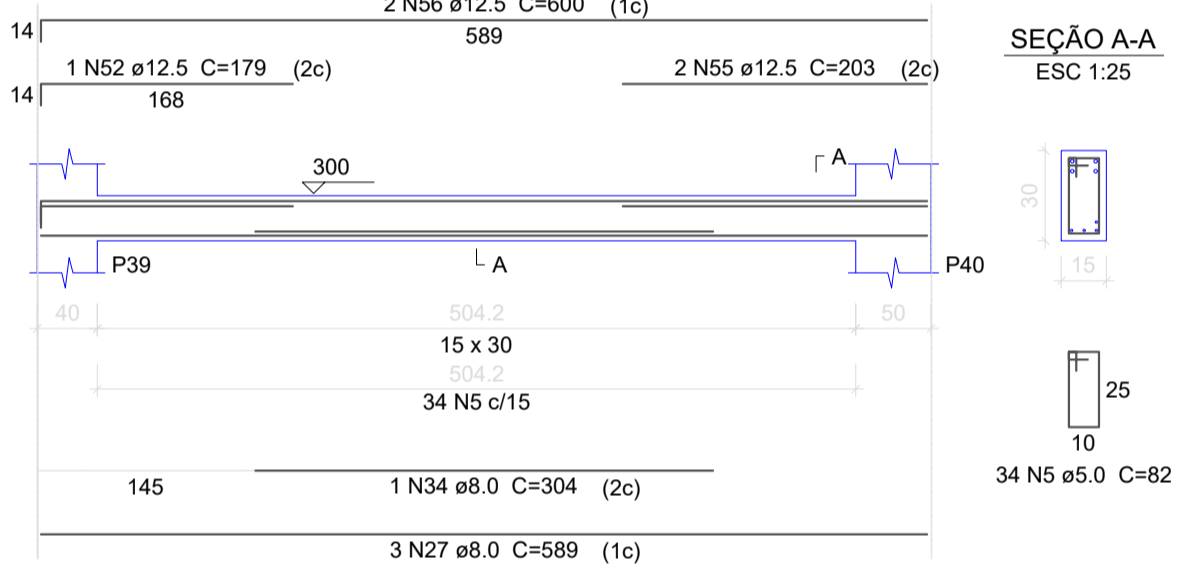
V12

ESC 1:50



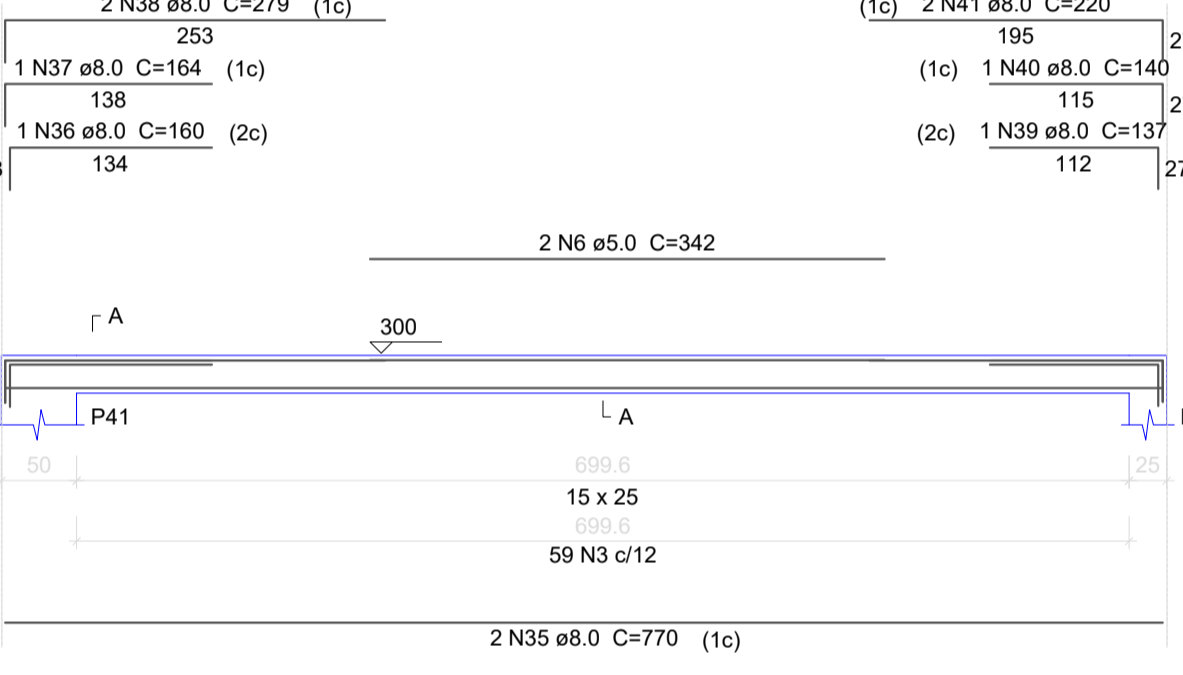
V13

ESC 1:50



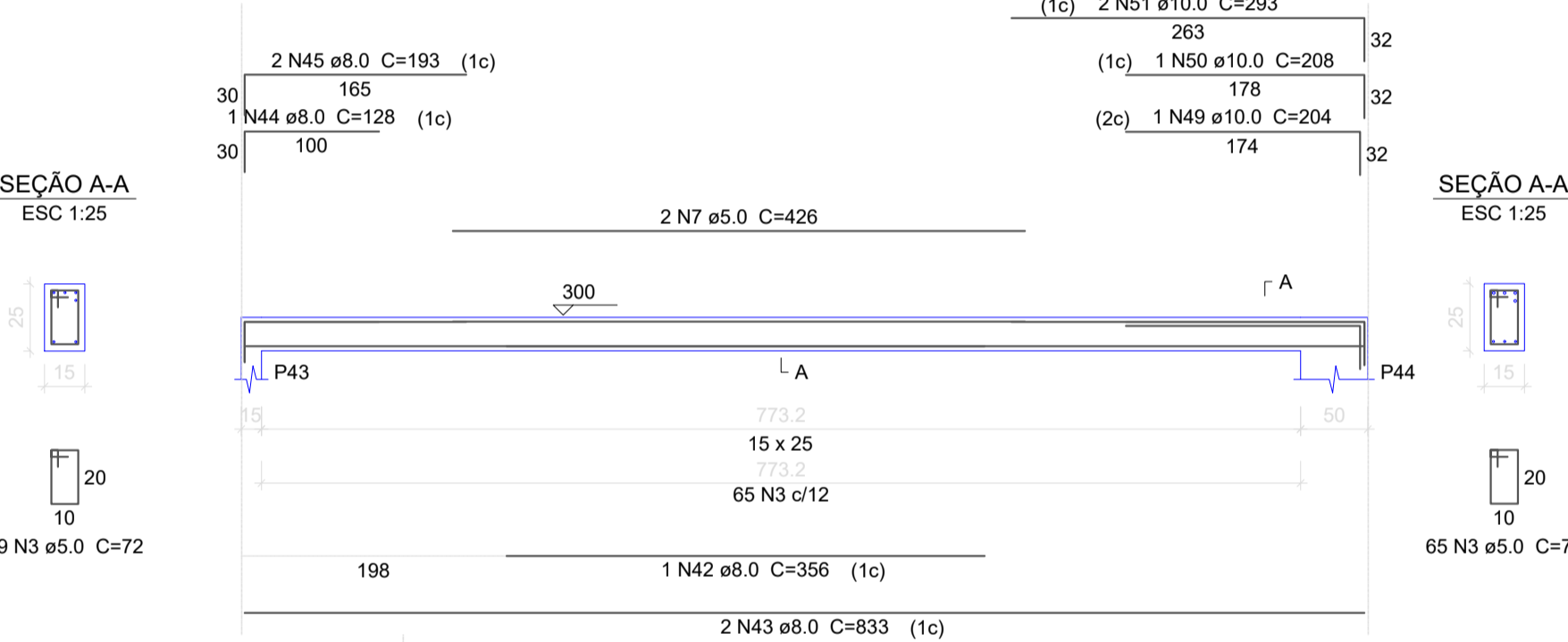
V14

ESC 1:50



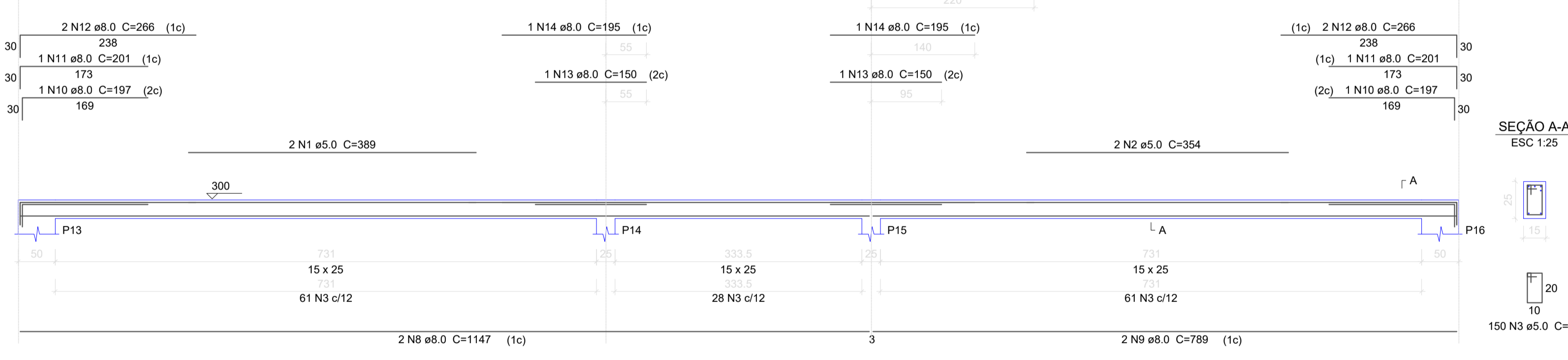
V15

ESC 1:50



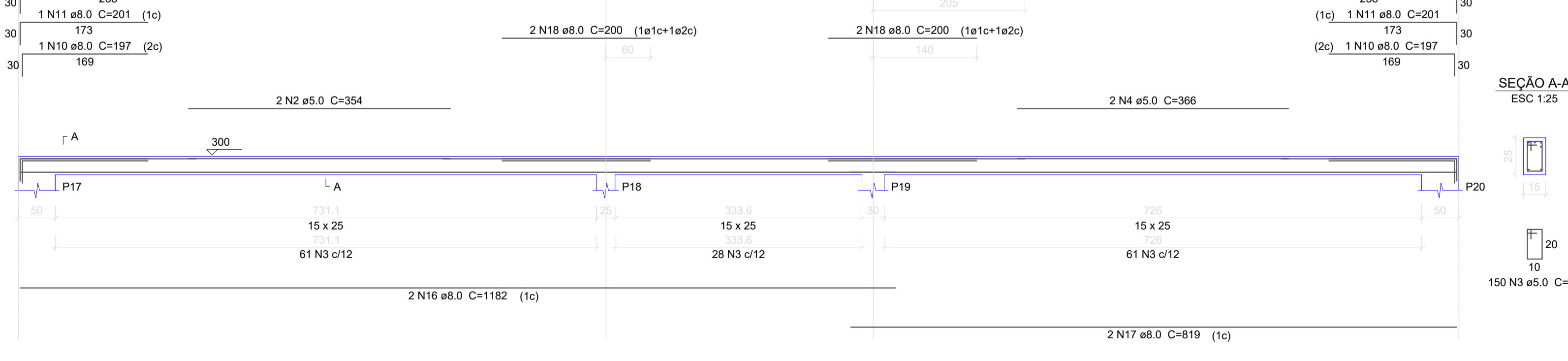
V4

ESC 1:50



V5

ESC 1:50



Relação do aço

CAÇO	N	DIAM	Q	UNIT (cm)	C.TOTAL (cm)
CA60	1	5.0	2	389	778
CA60	2	5.0	4	354	1416
CA60	3	5.0	608	72	43776
CA60	4	5.0	2	366	732
CA60	5	5.0	188	82	15416
CA60	6	5.0	2	342	684
CA60	7	5.0	2	426	852
CA50	8	8.0	4	1147	4588
CA50	9	8.0	2	789	1578
CA50	10	8.0	4	197	788
CA50	11	8.0	4	201	804
CA50	12	8.0	8	266	2128
CA50	13	8.0	2	150	300
CA50	14	8.0	2	195	390
CA50	15	8.0	2	764	1528
CA50	16	8.0	2	1182	2364
CA50	17	8.0	2	819	1638
CA50	18	8.0	4	200	800
CA50	19	8.0	2	766	1532
CA50	20	8.0	3	232	696
CA50	21	8.0	1	250	250
CA50	22	8.0	3	1198	3594
CA50	23	8.0	3	263	789
CA50	24	8.0	6	554	3324
CA50	25	8.0	3	103	309
CA50	26	8.0	2	562	1124
CA50	27	8.0	7	589	4123
CA50	28	8.0	1	98	98
CA50	29	8.0	1	118	118
CA50	30	8.0	2	801	1602
CA50	31	8.0	2	635	1270
CA50	32	8.0	1	143	143
CA50	33	8.0	3	659	1977
CA50	34	8.0	1	304	304
CA50	35	8.0	2	770	1540
CA50	36	8.0	1	160	160
CA50	37	8.0	1	164	164
CA50	38	8.0	2	279	558
CA50	39	8.0	1	137	137
CA50	40	8.0	1	140	140
CA50	41	8.0	2	220	440
CA50	42	8.0	1	356	356
CA50	43	8.0	2	833	1666
CA50	44	8.0	1	128	128
CA50	45	8.0	2	193	386
CA50	46	10.0	2	602	1204
CA50	47	10.0	1	210	210
CA50	48	10.0	2	865	1730
CA50	49	10.0	1	204	204
CA50	50	10.0	1	208	208
CA50	51	10.0	2	293	586
CA50	52	12.5	2	179	358
CA50	53	12.5	2	193	386
CA50	54	12.5	2	613	1226
CA50	55	12.5	2	203	406
CA50	56	12.5	2	600	1200

Resumo do aço

CAÇO	DIAM	C.TOTAL (m)	PESO + 10 % (kg)
CA50	8.0	438.8	190.4
CA50	10.0	41.5	28.1
CA50	12.5	35.8	37.9
CA60	5.0	636.6	107.9
PESO TOTAL			
CA50		256.4	
CA60		107.9	

Vol. de concreto total (C-25) = 4.46 m³
Área de forma total = 76.3 m²

<p>QUADRO DE ÁREAS:</p> <p>Projeto: 1.241,83m² Área do Terreno: 2673,00 m²</p>	<p>OBRA:</p> <p>ESCOLA DE EDUCAÇÃO BÁSICA</p> <p>ENDEREÇO:</p> <p>RUA Padre Otávio de Lorenzi, S/N, BAIRRO COHAB Bom Jardim da Serra - SC</p>
--	---

<p>RESP. TÉCNICO:</p> <p>Eng. Civil Jorge E. Batista Muniz CREA-SC 143778-1</p>	<p>PROPRIETÁRIO:</p> <p>Prefeitura Municipal de Bom Jardim da Serra CNPJ: 82.844.754/0001-82</p>
---	--

<p>DESCRIÇÃO:</p> <p>PROJETO ESTRUTURAL TÉRREO VIGAS</p>	<p>PRANCHA:</p> <p>15/27</p>
--	------------------------------

<p>ESCALA:</p> <p>INDICADA</p>	<p>ÁREA TOTAL:</p> <p>1.241,83m²</p>	<p>DATA:</p> <p>Novembro/2021</p>	<p>FORMATO PRANCHA:</p> <p>A1(841X594mm)</p>	<p>REVISÃO:</p> <p>JEBM-17/11/21</p>
--------------------------------	--------------------------------------	-----------------------------------	--	--------------------------------------