

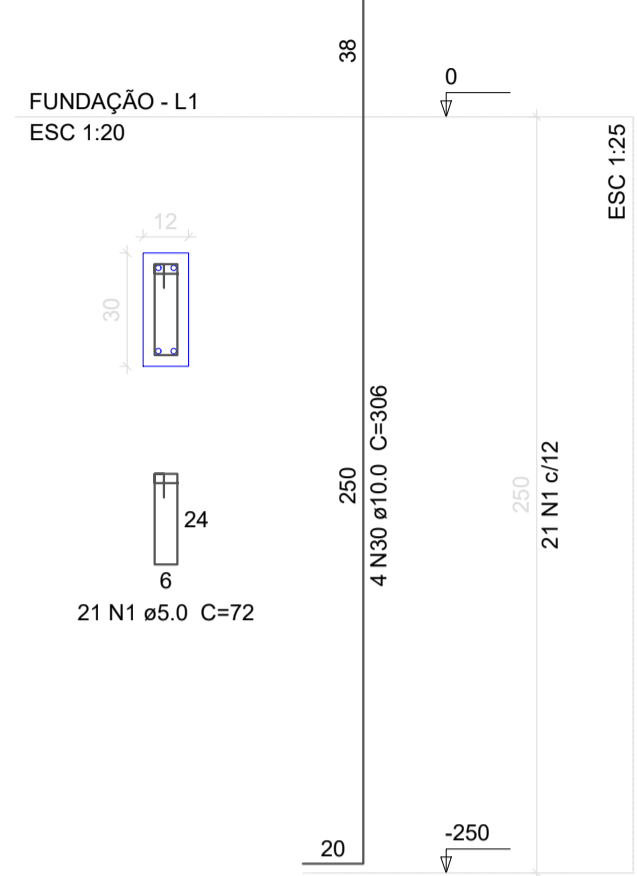
S1=S2=S3=S4=S5=S6=S7=S8=S9=S10=S11=S12
 =S13=S14=S15=S16=S17=S18=S19=S20=S21
 =S22

PLANTA
 ESC 1:25

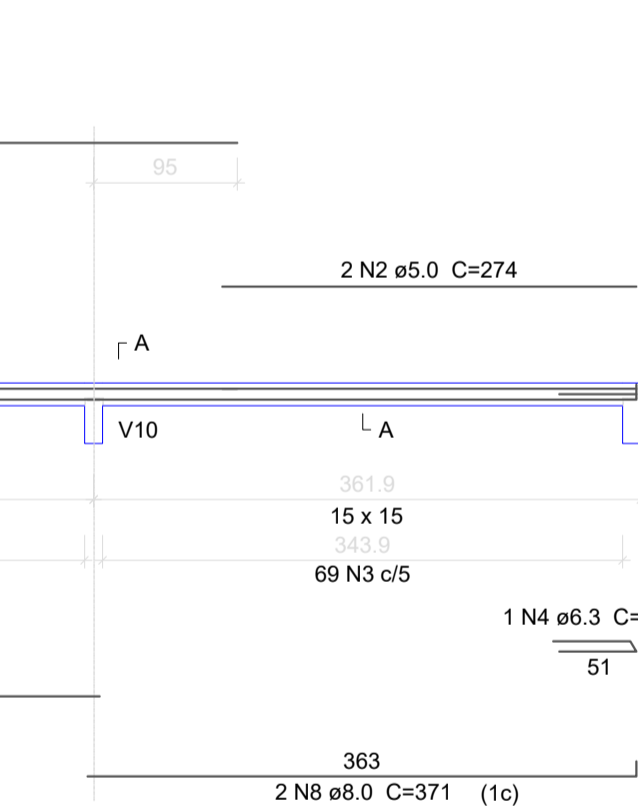
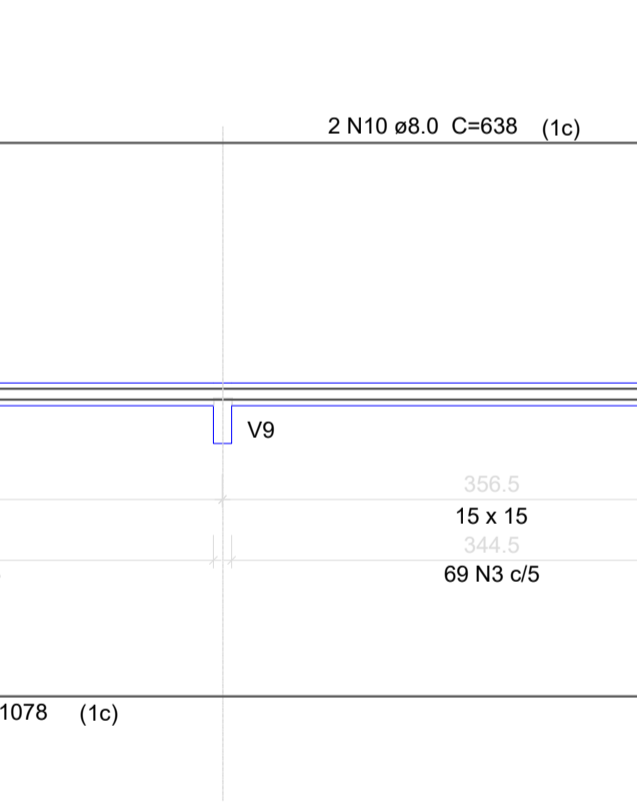
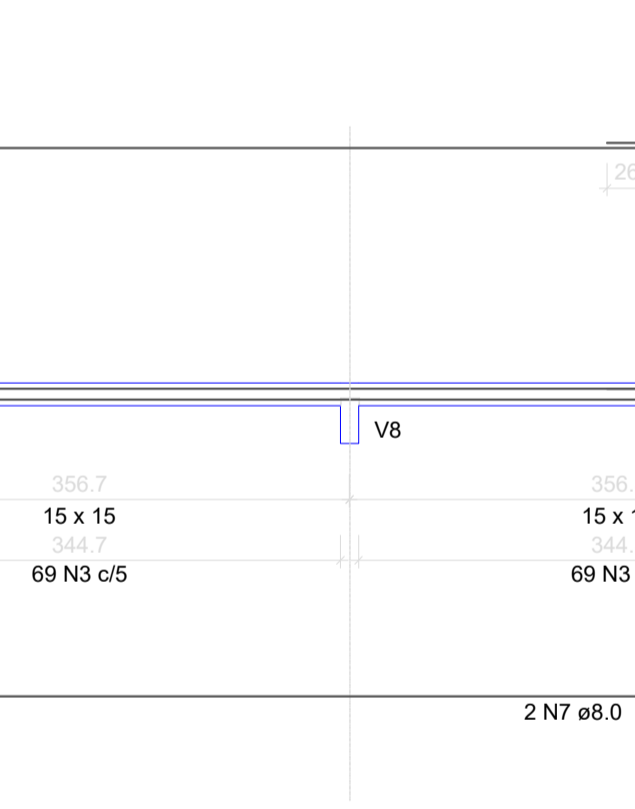
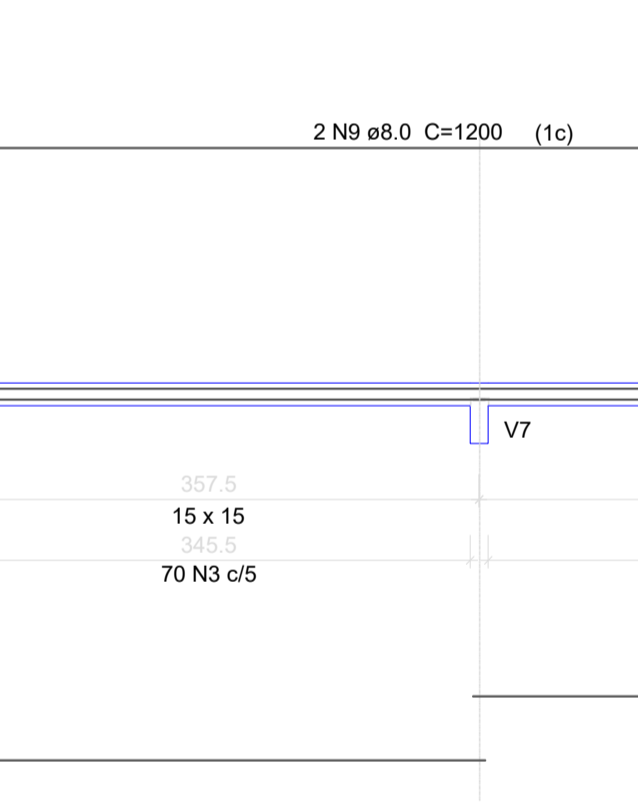
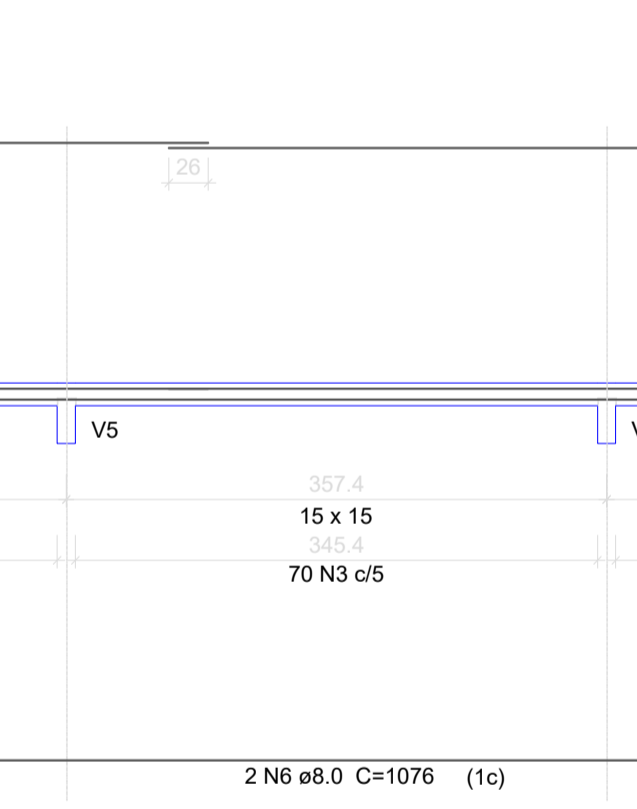
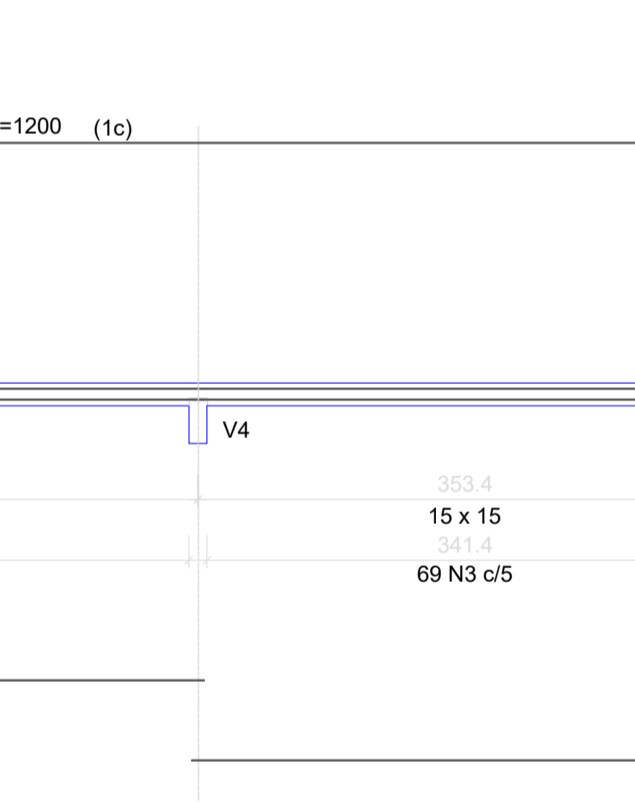
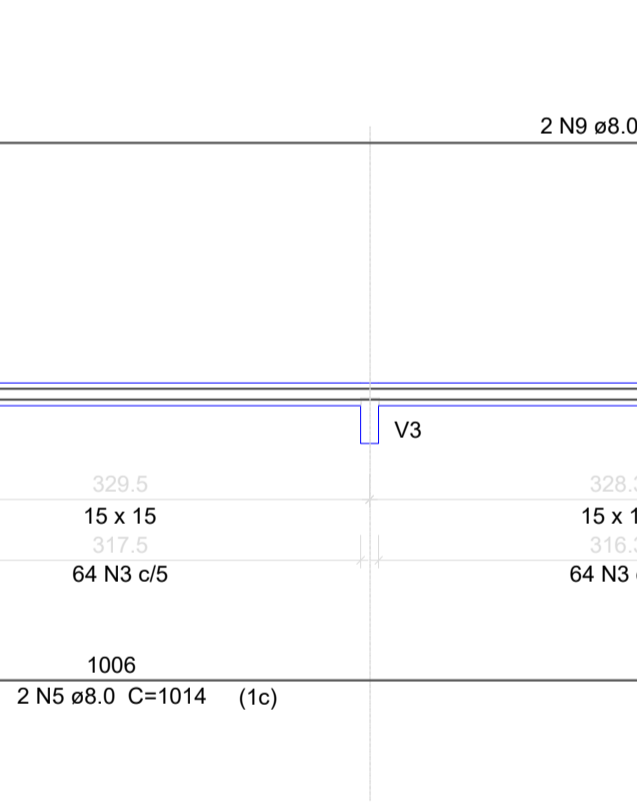
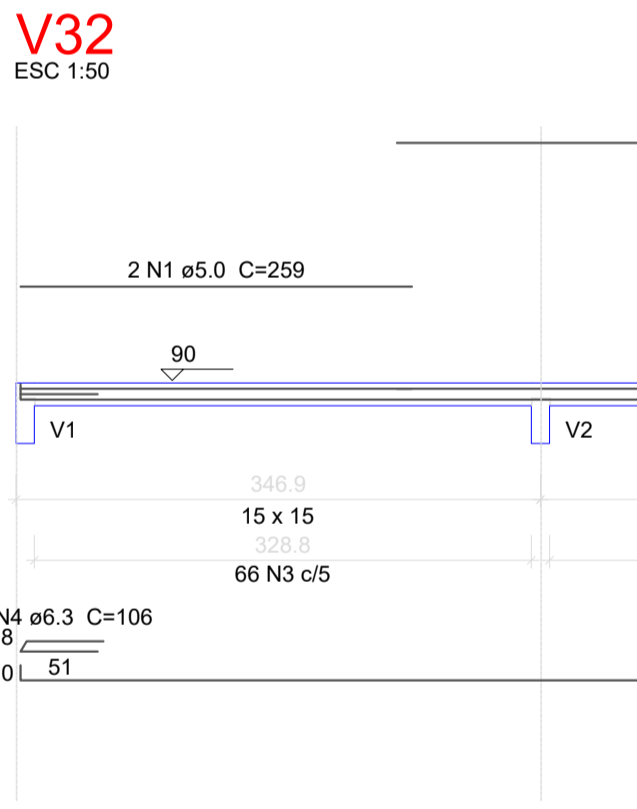
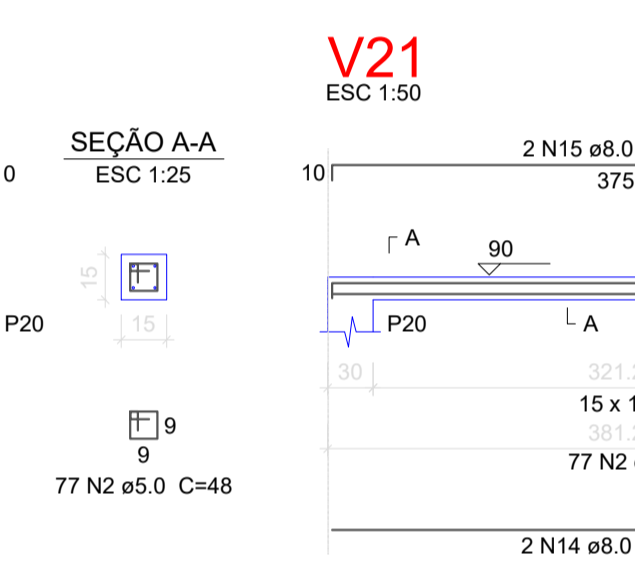
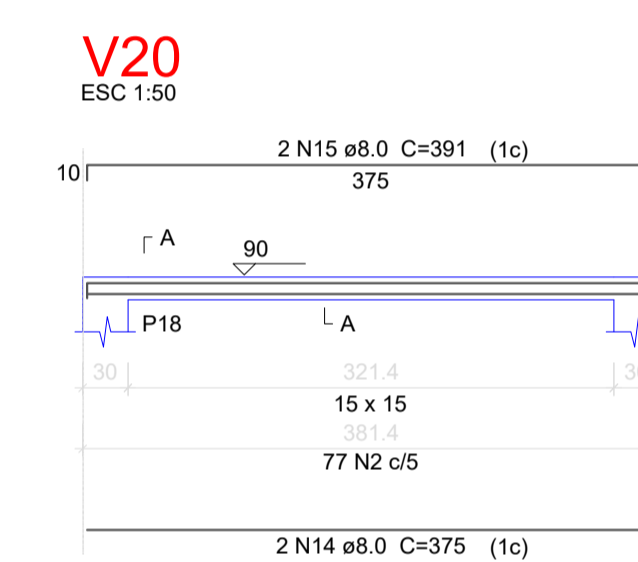
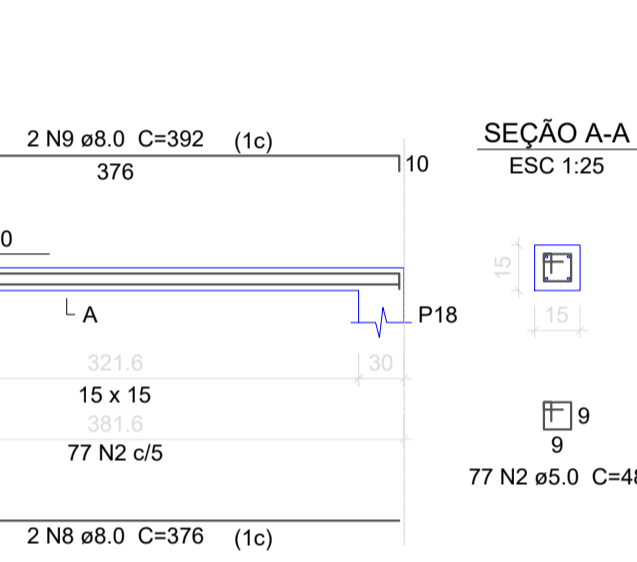
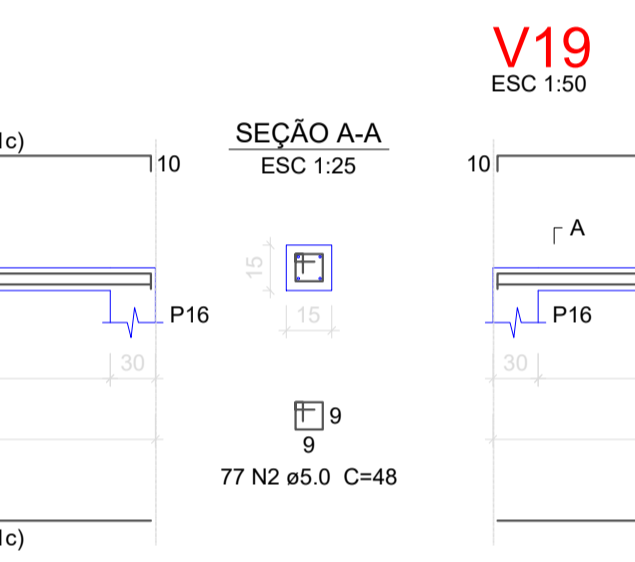
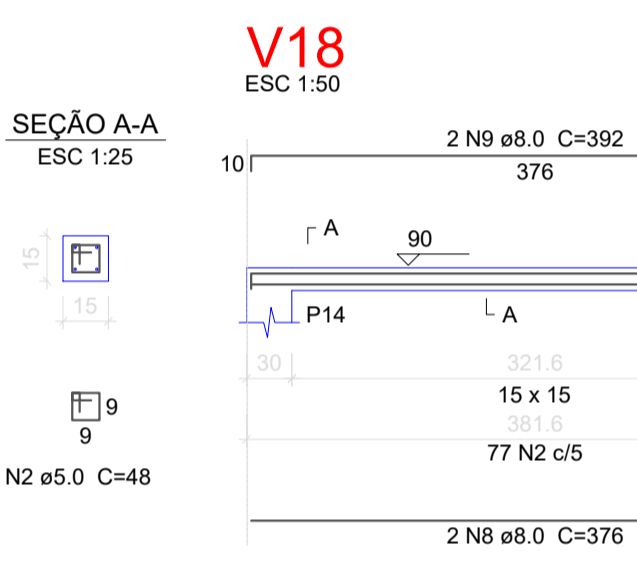
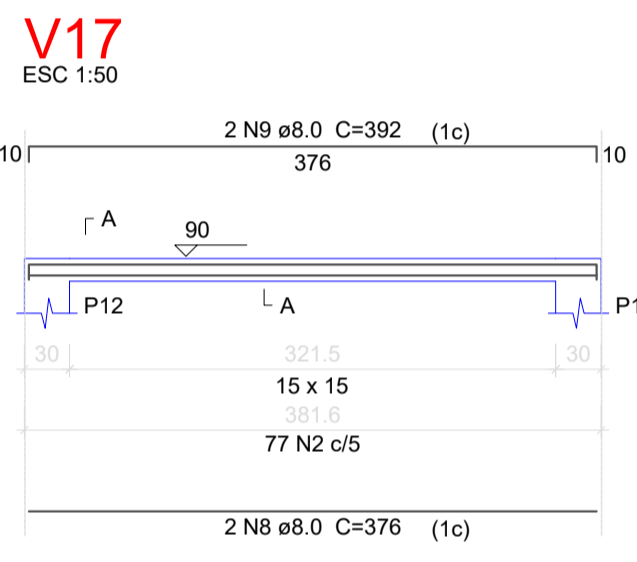
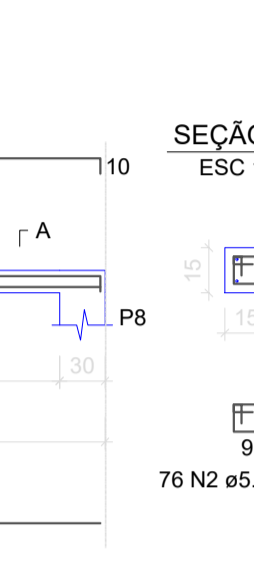
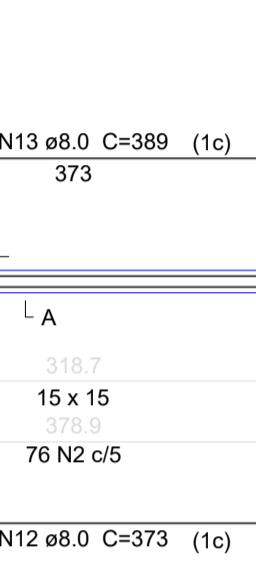
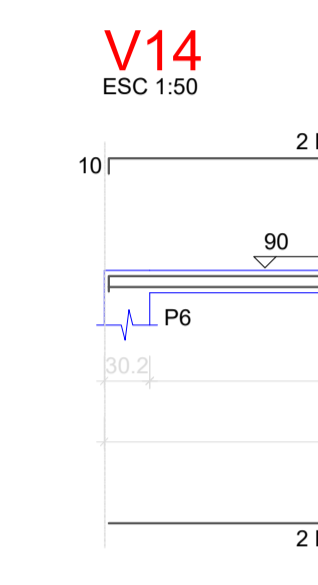
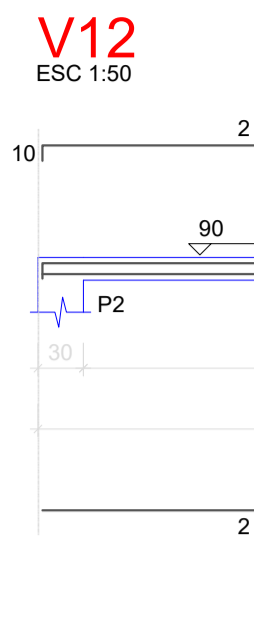
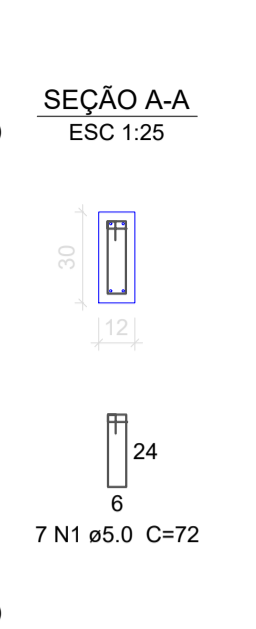
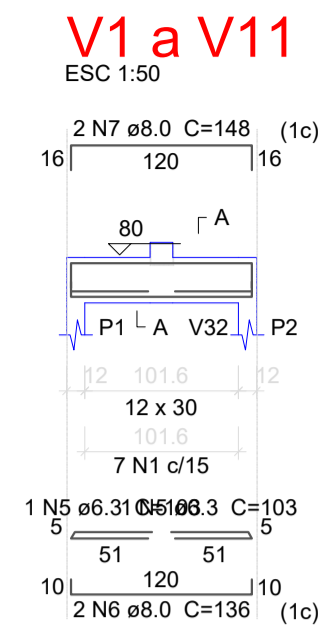
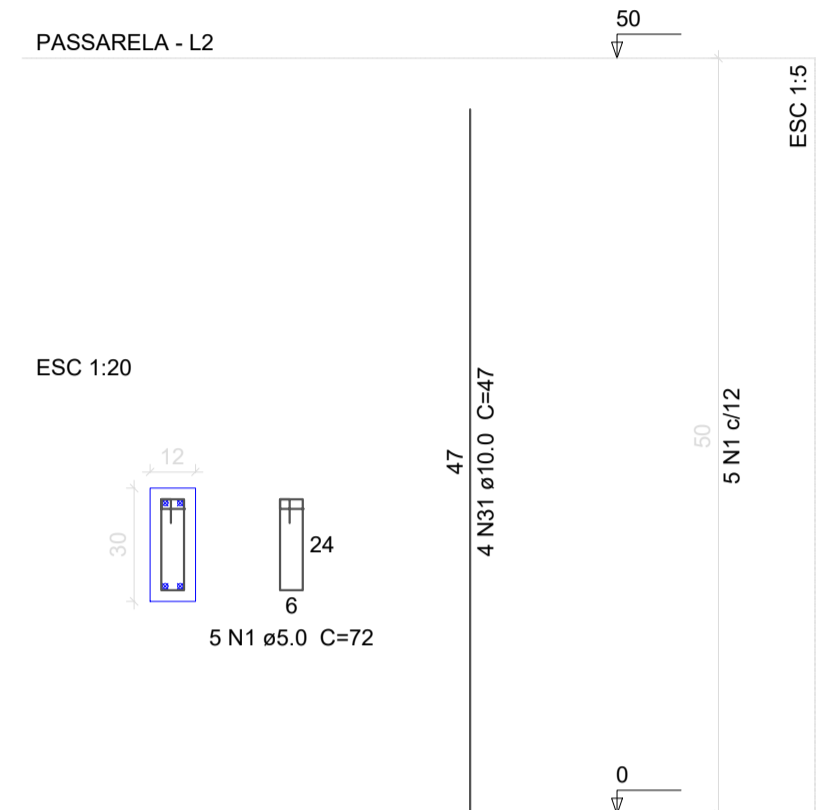
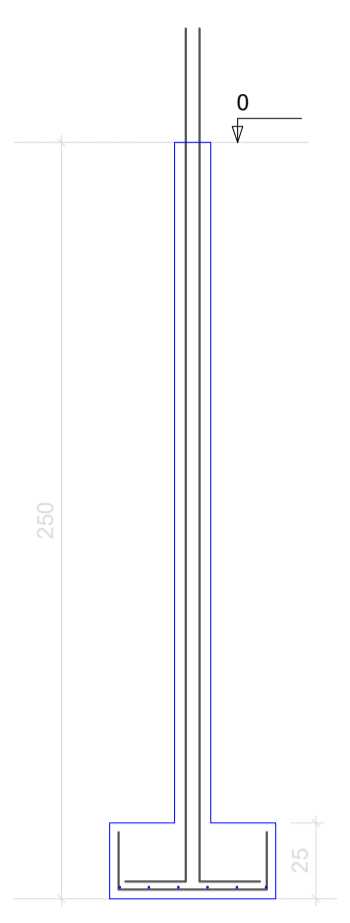
CORTE
 ESC 1:25

P1=P2=P3=P4=P5=P6=P7=P8=P9=P10=P11=P12
 =P13=P14=P15=P16=P17=P18=P19=P20=P21
 =P22

P1=P2=P3=P4=P5=P6=P7=P8=P9=P10=P11=P12
 =P13=P14=P15=P16=P17=P18=P19=P20=P21
 =P22



Solo com capacidade de suporte > 3.00 kgf/cm²
 Solo compactado sobre a sapata
 peso específico > 1600.00 kg/m³



Relação do aço

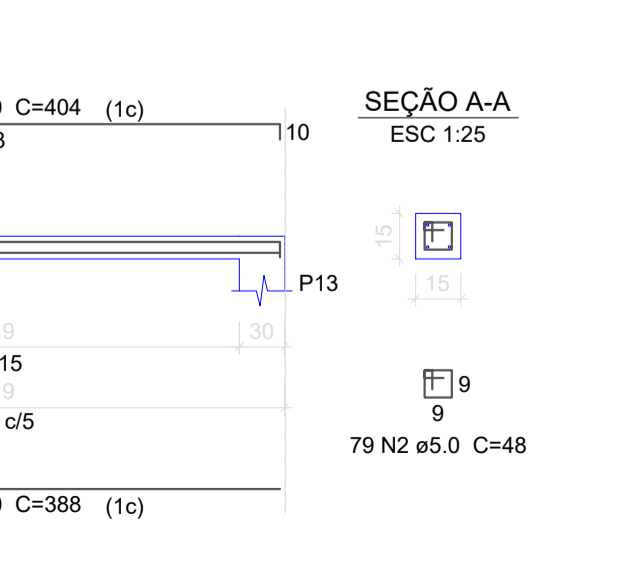
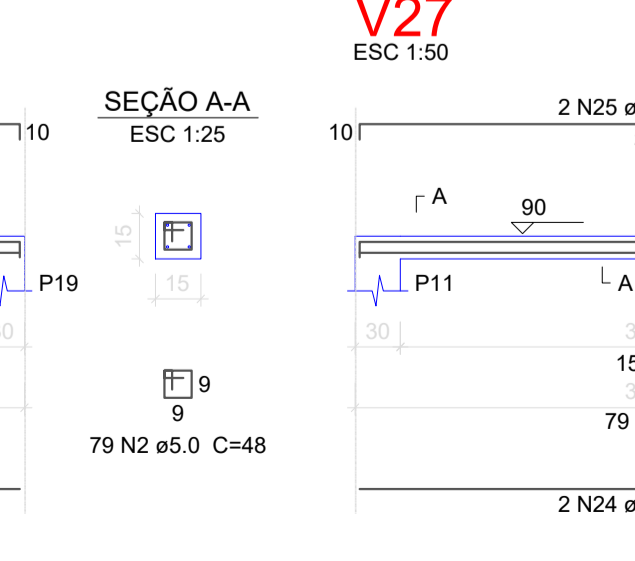
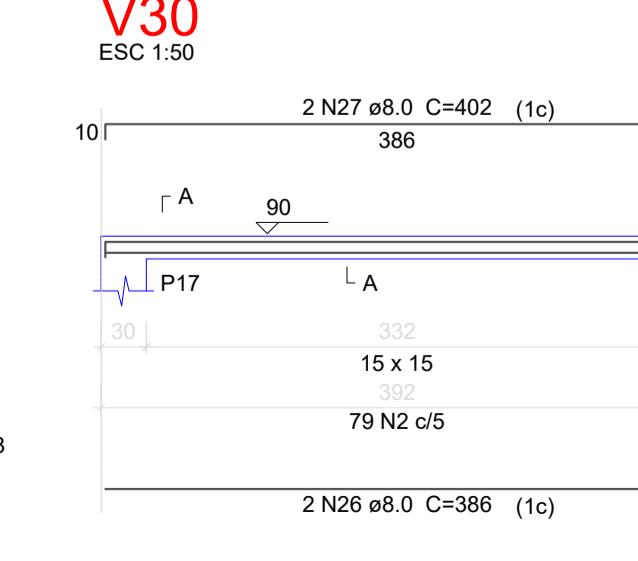
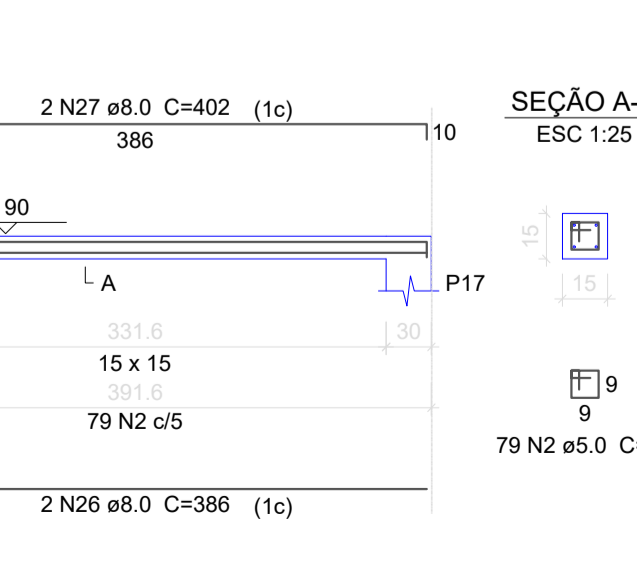
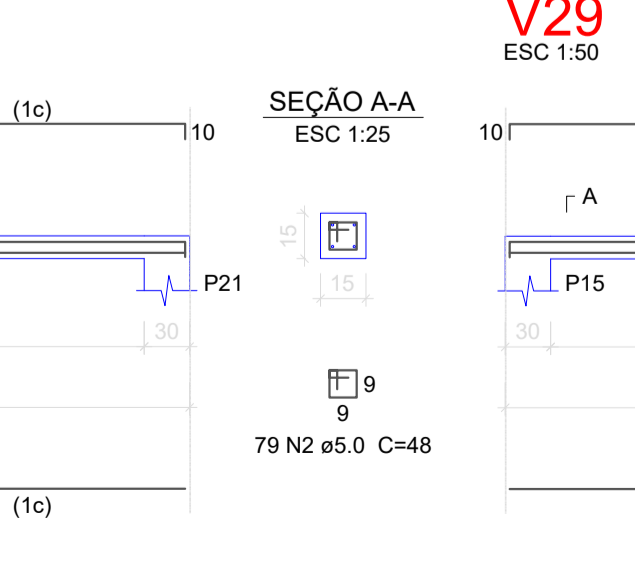
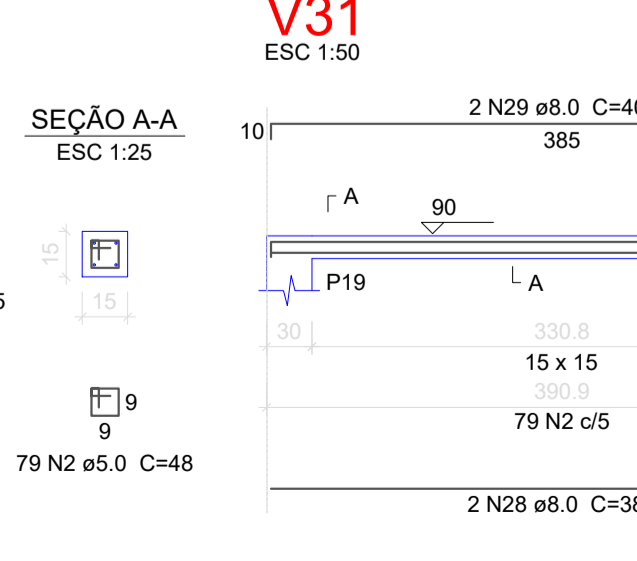
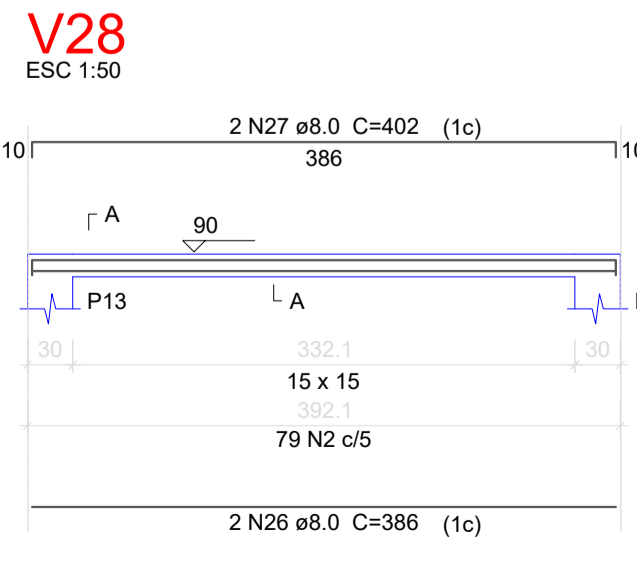
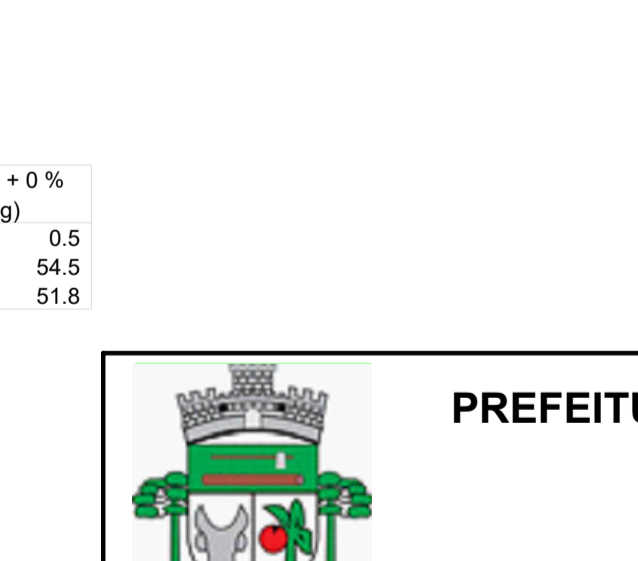
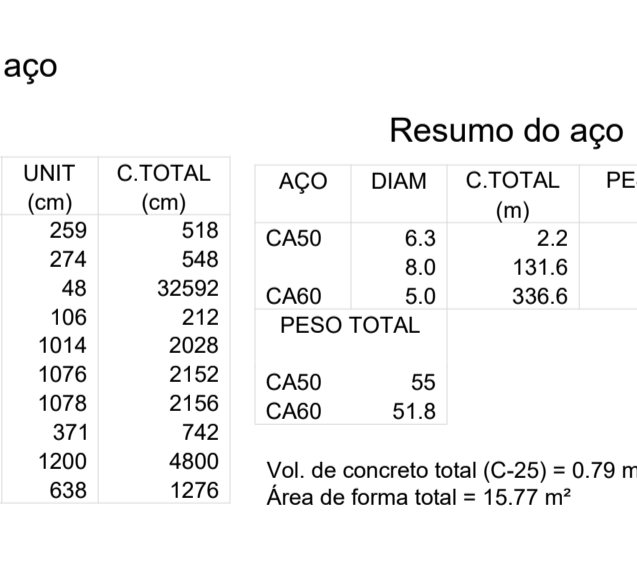
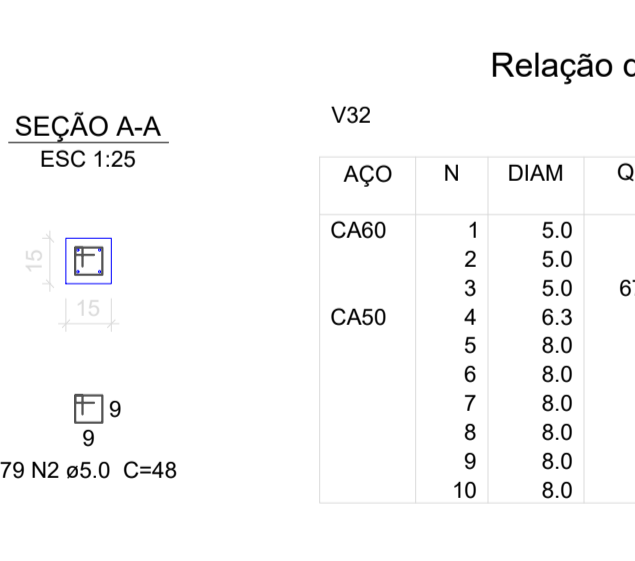
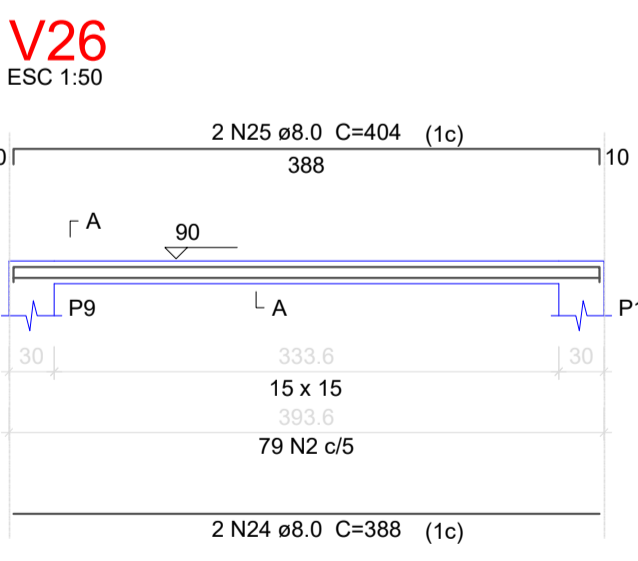
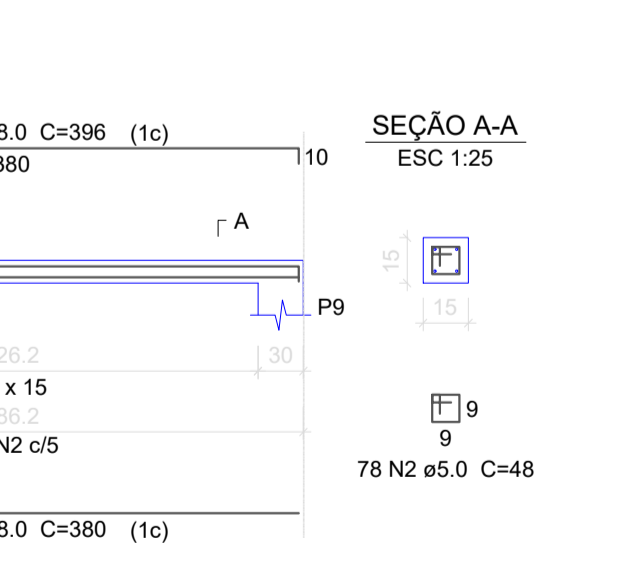
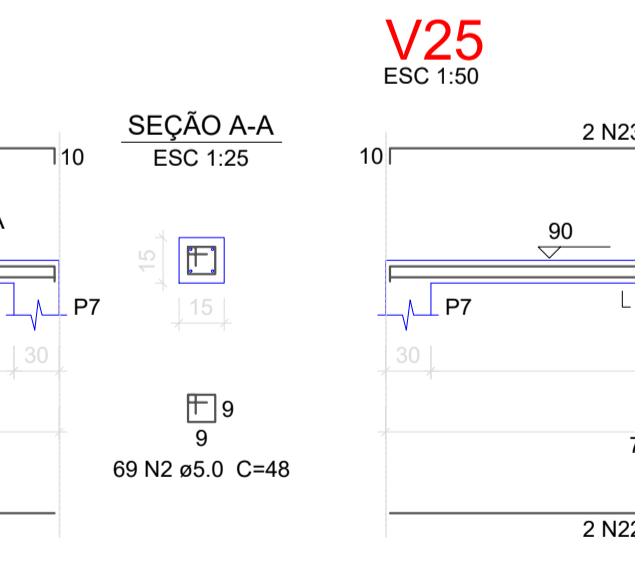
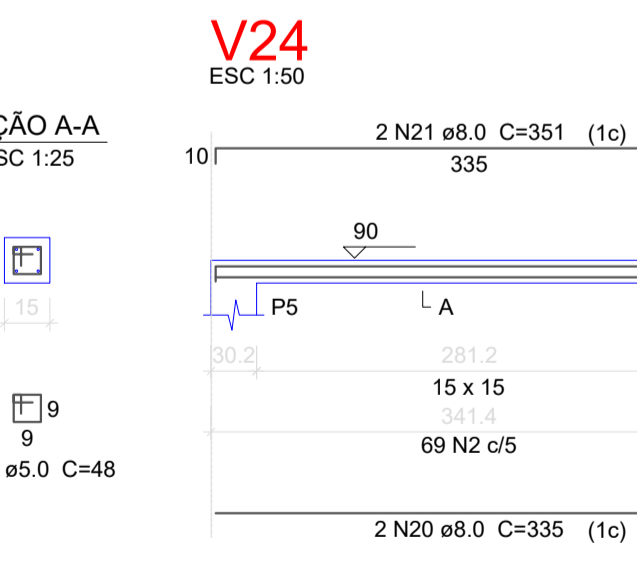
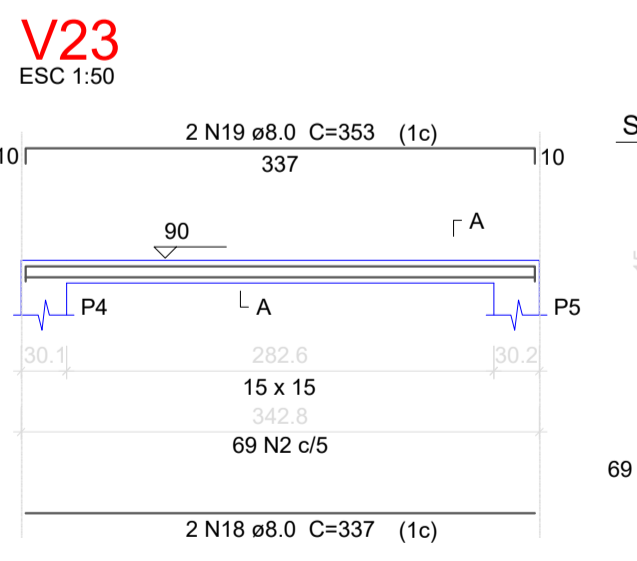
Fundação:	Passarela:	22xS1	11xV1
V12	V12		V13
V14	V14		V15
V16	V16		V17
V18	V18		V19
V20	V20		V21
V22	V22		V23
V26	V26		V27
V28	V28		V29
V30	V30		V31

AÇO	N	DIAM	Q	UNIT (cm)	C.TOTAL (cm)
CA60	1	5.0	649	72	46728
	2	5.0	1531	48	73488
CA50	3	6.3	176	84	14784
	4	6.3	132	99	13068
	5	6.3	22	103	2266
	6	8.0	22	136	2992
	7	8.0	22	148	3256
	8	8.0	10	376	3760
	9	8.0	10	392	3920
	10	8.0	2	374	748
	11	8.0	2	390	780
	12	8.0	2	373	746
	13	8.0	2	389	778
	14	8.0	6	375	2250
	15	8.0	6	391	2346
	16	8.0	2	355	710
	17	8.0	2	371	742
	18	8.0	2	337	674
	19	8.0	2	353	706
	20	8.0	2	335	670
	21	8.0	2	351	702
	22	8.0	2	380	760
	23	8.0	2	396	792
	24	8.0	4	388	1552
	25	8.0	4	404	1616
	26	8.0	6	386	2316
	27	8.0	6	402	2412
	28	8.0	2	385	770
	29	8.0	2	401	802
	30	10.0	88	306	26928
	31	10.0	88	47	4136

Resumo do aço

AÇO	DIAM	C.TOTAL (m)	PESO + 0 % (kg)
CA50	6.3	301.2	73.7
	8.0	368	145
	10.0	310.7	191.5
CA60	5.0	1202.2	180
PESO TOTAL			
CA50		398.7	
CA60		180	

Vol. de concreto total (C-25) = 6.7 m³
 Área de forma total = 113.32 m²




Relação do aço

AÇO	N	DIAM	Q	UNIT (cm)	C.TOTAL (cm)
CA60	1	5.0	2	259	518
	2	5.0	2	274	548
	3	5.0	679	48	32592
CA50	4	6.3	2	106	212
	5	8.0	2	1014	2028
	6	8.0	2	1076	2152
	7	8.0	2	1078	2156
	8	8.0	2	371	742
	9	8.0	4	1200	4800
	10	8.0	2	638	1276

Resumo do aço

AÇO	DIAM	C.TOTAL (m)	PESO + 0 % (kg)
CA50	6.3	2.2	0.5
	8.0	131.6	54.5
CA60	5.0	336.6	51.8
PESO TOTAL			
CA50		55	
CA60		51.8	

Vol. de concreto total (C-25) = 0.79 m³
 Área de forma total = 15.77 m²



PREFEITURA DE BOM JARDIM DA SERRA

Projeto de Revitalização
 MIRANTE DA CASCATÁ
 SC-390 | Bom Jardim da Serra / SC

Projeto: Estrutural
 Descrição: Sapatas, pilares e vigas da Passarela

Escala: indicada
 Data: Agosto | 2022

Responsável Técnico: Jorge E. Batista Muniz
 Engenheiro Civil. CREA | SC 143778-1

07