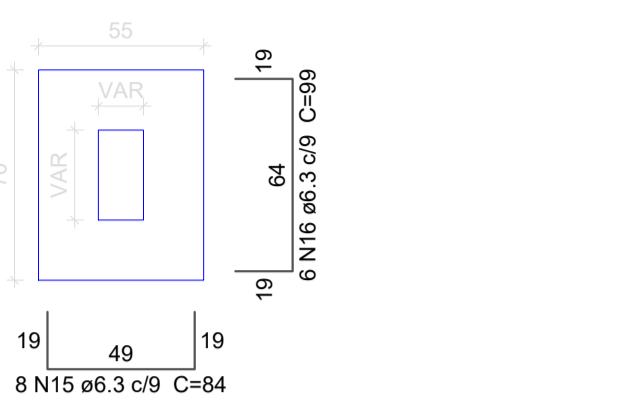


S1=S3=S4=S7=S8

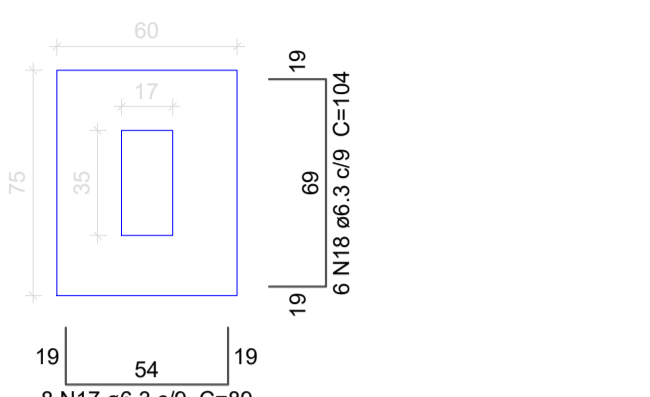
PLANTA ESC 1:25 CORTE ESC 1:25



Solo com capacidade de suporte > 5.00 kgf/cm²  
Solo compactado sobre a sapata  
peso específico > 2000.00 kgfm³

S2

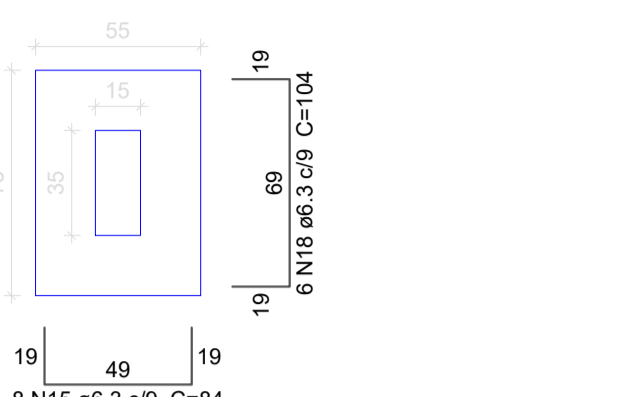
PLANTA ESC 1:25 CORTE ESC 1:25



Solo com capacidade de suporte > 5.00 kgf/cm²  
Solo compactado sobre a sapata  
peso específico > 2000.00 kgfm³

S5

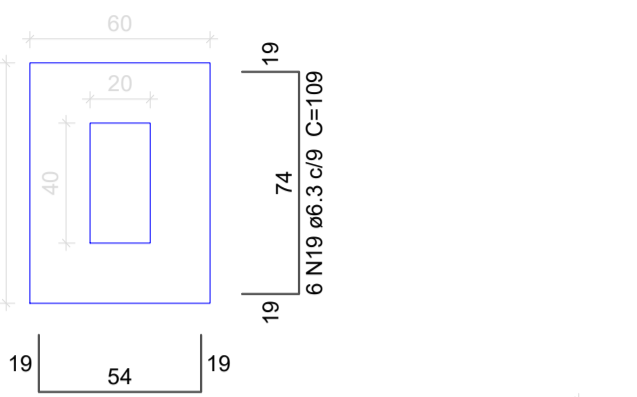
PLANTA ESC 1:25 CORTE ESC 1:25



Solo com capacidade de suporte > 5.00 kgf/cm²  
Solo compactado sobre a sapata  
peso específico > 2000.00 kgfm³

S6

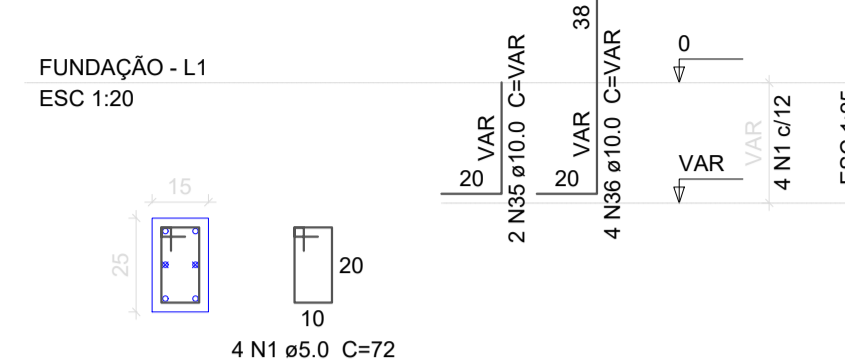
PLANTA ESC 1:25 CORTE ESC 1:25



Solo com capacidade de suporte > 5.00 kgf/cm²  
Solo compactado sobre a sapata  
peso específico > 2000.00 kgfm³

P1=P4

FUNDAÇÃO - L1 ESC 1:20



Resumo do aço

ACO	DIAM	C.TOTAL (m)	PESO + 10% (kg)
CA50	6.3	104.2	28
	8.0	104.1	45.2
	10.0	130.3	88.3
	12.5	135.4	143.4
	16.0	28.3	49.1
CA60	5.0	457.2	77.5
PESO TOTAL			
CA50		354.1	
CA60		77.5	

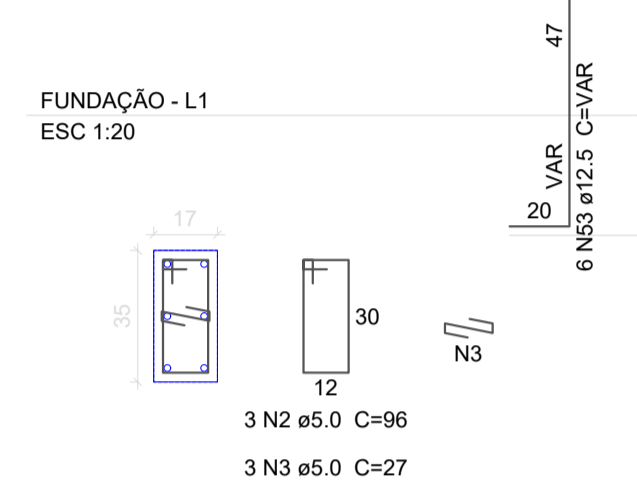
Vol. de concreto total (C-25) = 2.88 m³  
Área de forma total = 43.86 m²

Relação do aço

FUNDAÇÃO:	2xP1	P2	P3	P5	P6	P7	S2	S5	V1	V2	V3	V4	V5	V6	V7	V8	V9	V10	V11
CA50	1	5.0	42	72	3024														
	2	5.0	3	95	288														
	3	5.0	3	27	81														
	4	5.0	4	82	328														
	5	5.0	4	92	368														
	6	5.0	4	112	448														
	7	5.0	406	62	25172														
	8	5.0	2	223	446														
	9	5.0	163	52	8476														
	10	5.0	46	68	3128														
	11	5.0	18	92	1656														
	12	5.0	18	26	468														
	13	5.0	18	78	1404														
	14	5.0	18	24	432														
CA50	15	6.3	48	84	4032														
	16	6.3	30	99	2970														
	17	6.3	17	89	1513														
	18	6.3	12	104	1248														
	19	6.3	6	109	654														
	20	8.0	2	435	870														
	21	8.0	1	258	258														
	22	8.0	4	555	2220														
	23	8.0	2	430	860														
	24	8.0	1	248	248														
	25	8.0	1	225	225														
	26	8.0	4	423	1692														
	27	8.0	1	230	230														
	28	8.0	4	475	1900														
	29	8.0	2	185	370														
	30	8.0	2	190	380														
	31	8.0	3	90	270														
	32	8.0	1	105	105														
	33	8.0	1	108	108														
	34	8.0	2	336	672														
	35	10.0	8	VAR	VAR														
	36	10.0	20	VAR	VAR														
	37	10.0	4	VAR	VAR														
	38	10.0	10	75	750														
	39	10.0	3	471	1413														
	40	10.0	1	133	133														
	41	10.0	1	133	133														
	42	10.0	2	467	934														
	43	10.0	2	166	332														
	44	10.0	2	169	338														
	45	10.0	4	457	1828														
	46	10.0	1	183	183														
	47	10.0	1	186	186														
	48	10.0	1	161	161														
	49	10.0	2	546	1092														
	50	10.0	1	113	113														
	51	10.0	2	346	692														
	52	10.0	2	267	2136														
	53	12.5	6	VAR	VAR														
	54	12.5	30	94	2820														
	55	12.5	4	VAR	VAR														
	56	12.5	1	156	156														
	57	12.5	1	186	186														
	58	12.5	2	609	1218														
	59	12.5	1	161	161														
	60	12.5	2	205	410														
	61	12.5	1	164	164														
	62	12.5	2	210	420														
	63	12.5	1	168	168														
	64	12.5	2	597	1114														
	65	12.5	6	317	1902														
	66	12.5	14	267	3738														
	67	16.0	2	218	436														
	68	16.0	2	219	438														
	69	16.0	2	345	690														
	70	16.0	2	391	782														
	71	16.0	4	121	484														

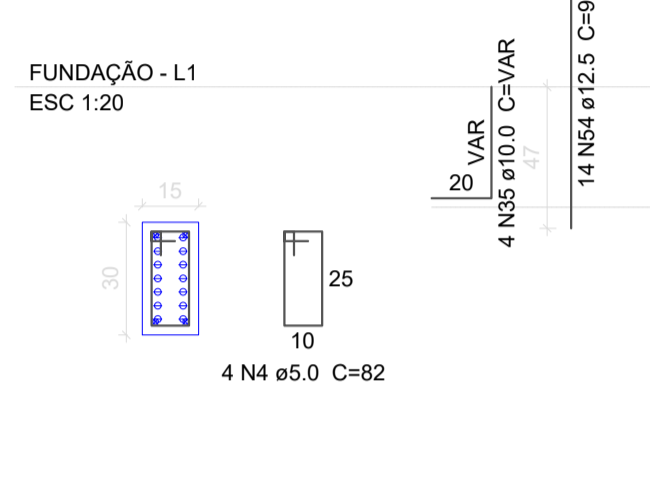
P2

FUNDAÇÃO - L1 ESC 1:20



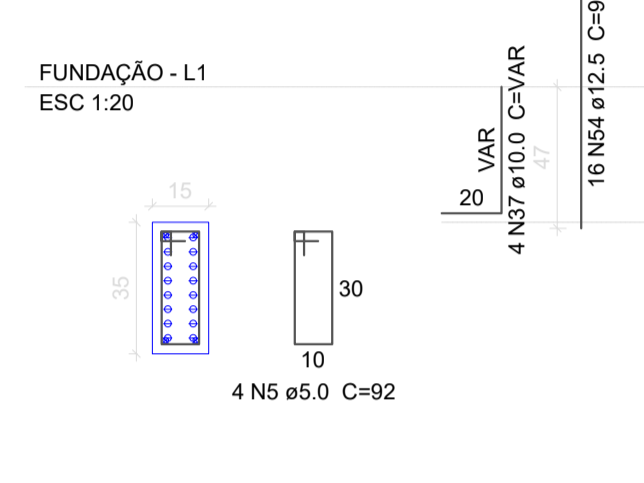
P3

FUNDAÇÃO - L1 ESC 1:20



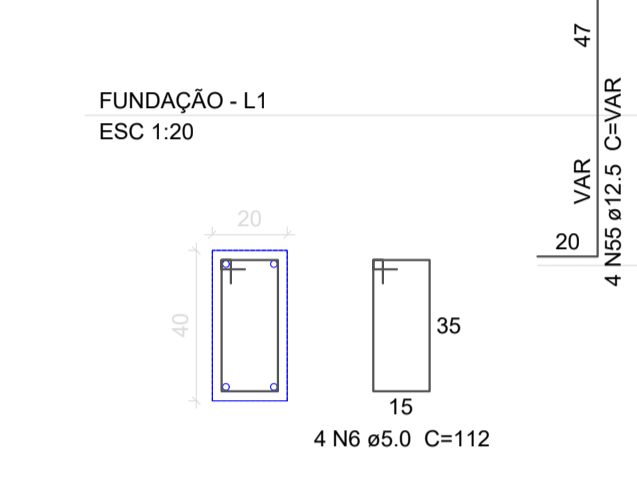
P5

FUNDAÇÃO - L1 ESC 1:20



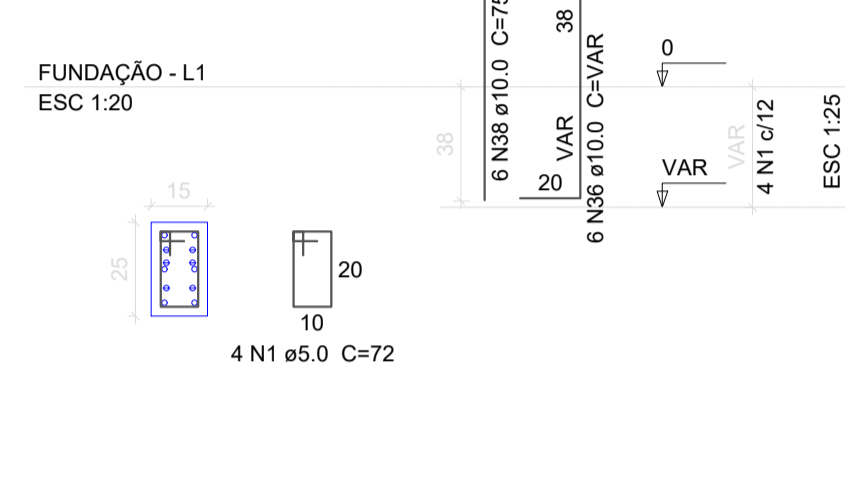
P6

FUNDAÇÃO - L1 ESC 1:20



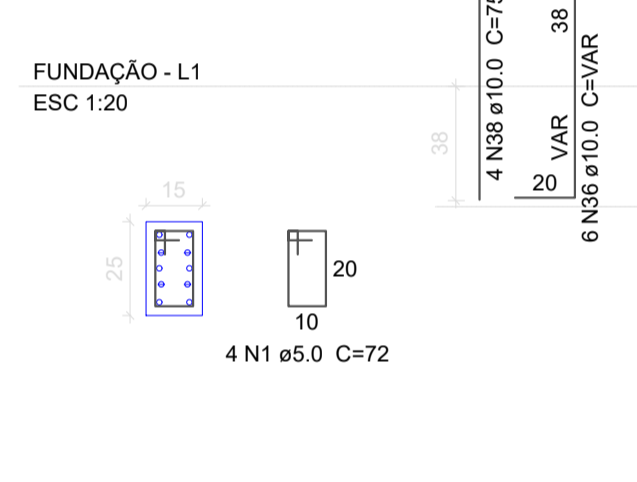
P7

FUNDAÇÃO - L1 ESC 1:20



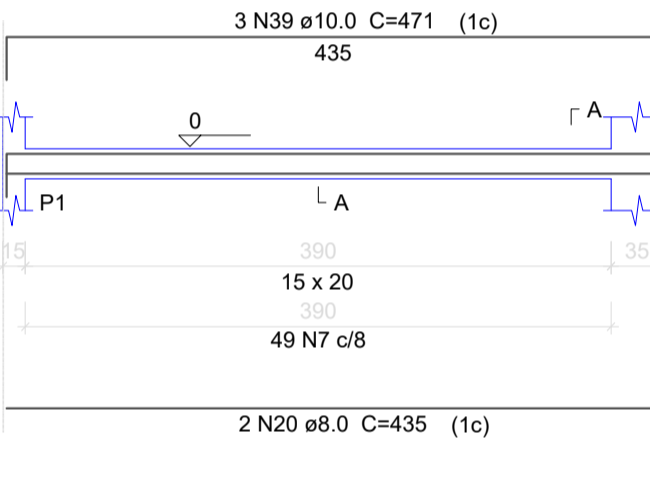
P8

FUNDAÇÃO - L1 ESC 1:20



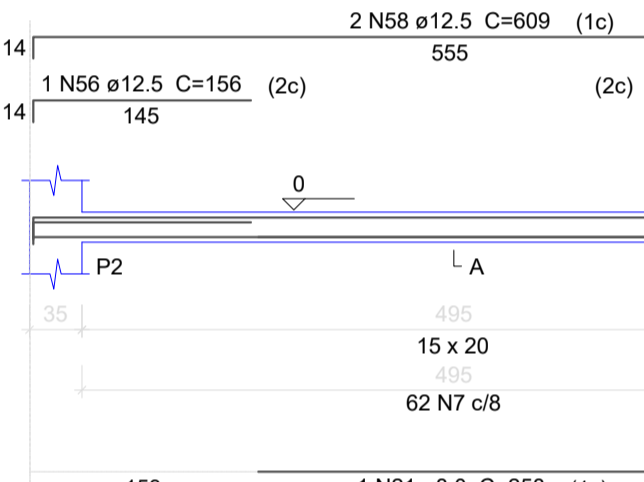
V1

ESC 1:50



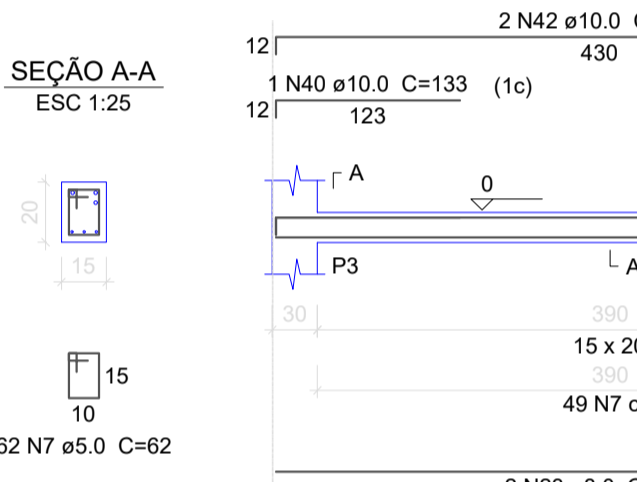
V2

ESC 1:50



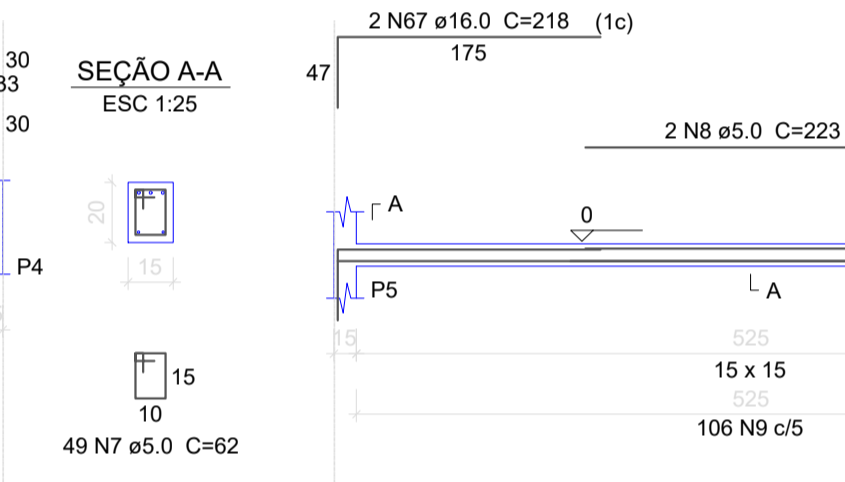
V3

ESC 1:50



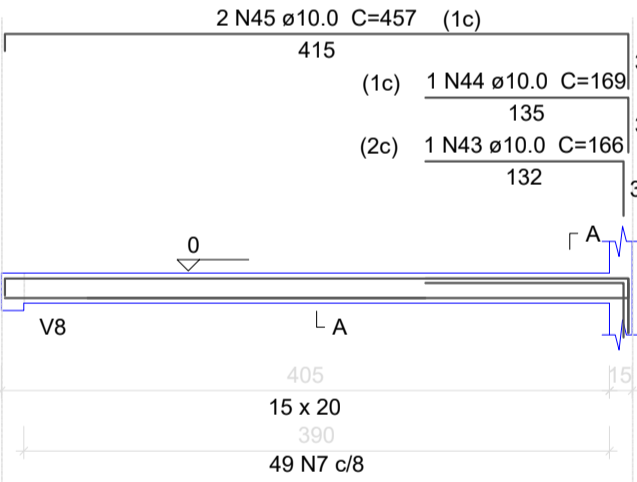
V4

ESC 1:50



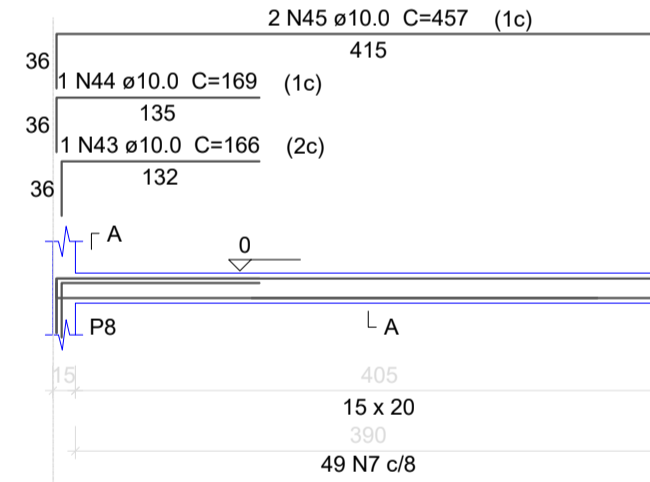
V5

ESC 1:50



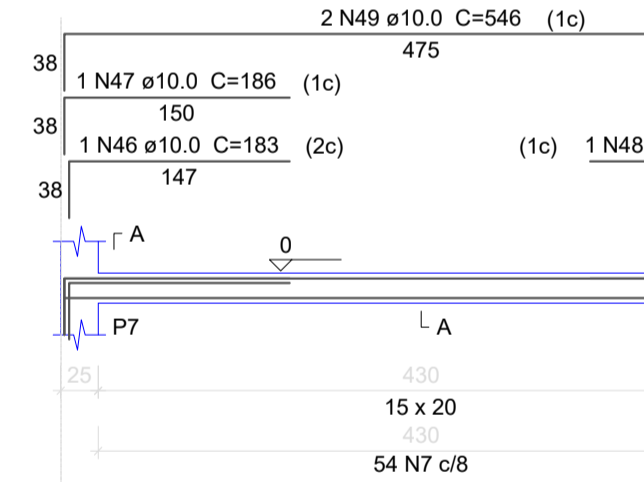
V6

ESC 1:50



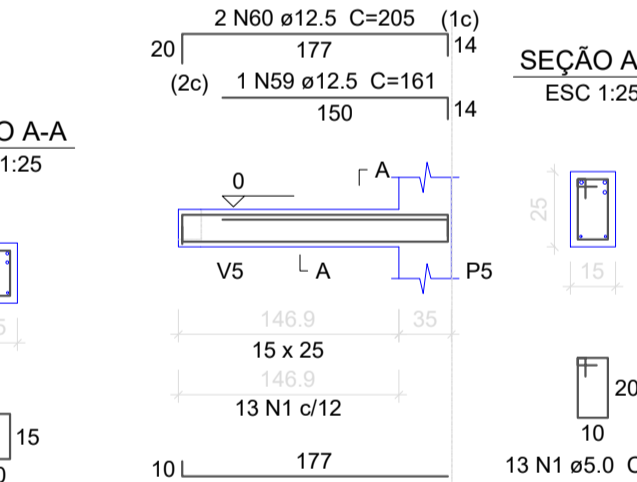
V7

ESC 1:50



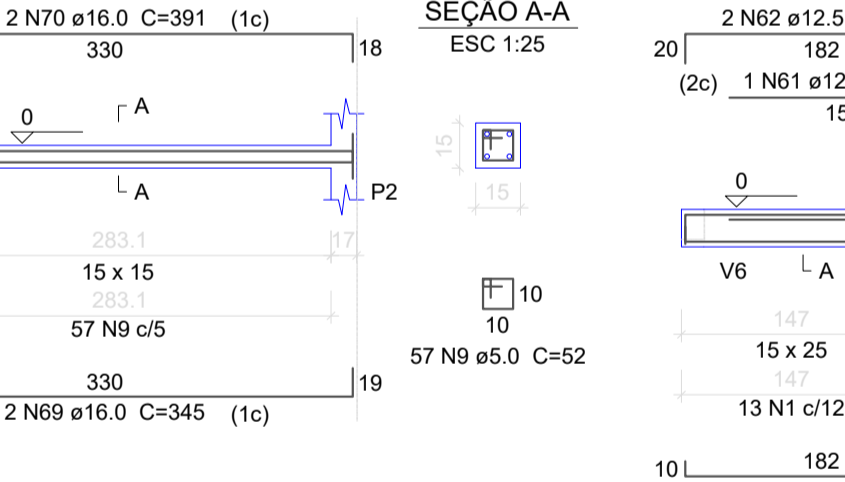
V8

ESC 1:50



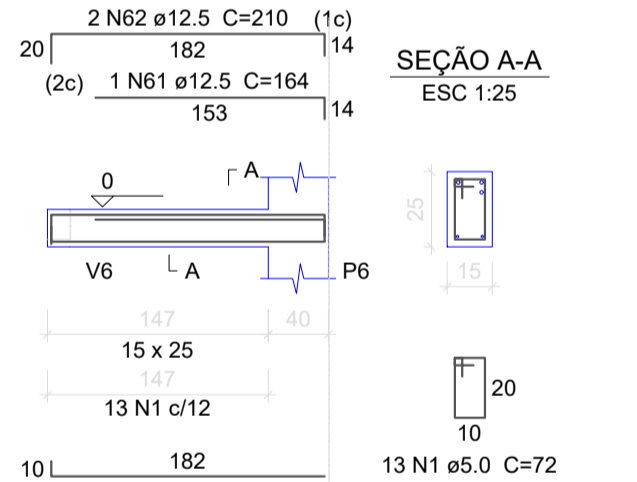
V9

ESC 1:50



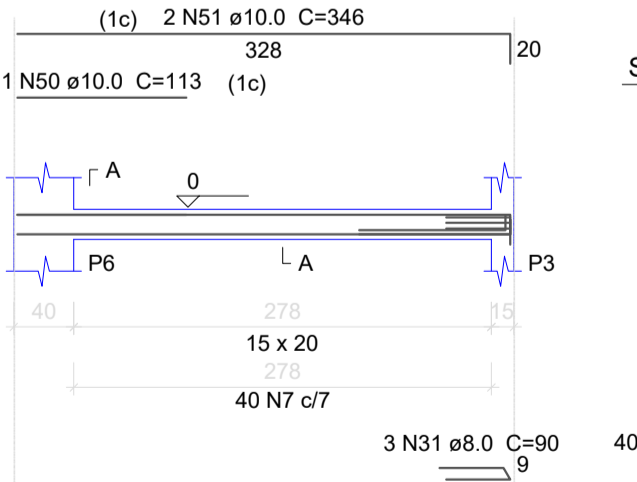
V10

ESC 1:50



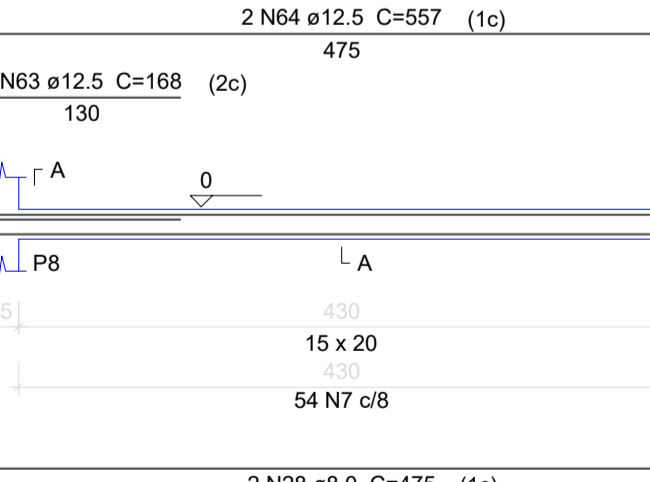
V11

ESC 1:50



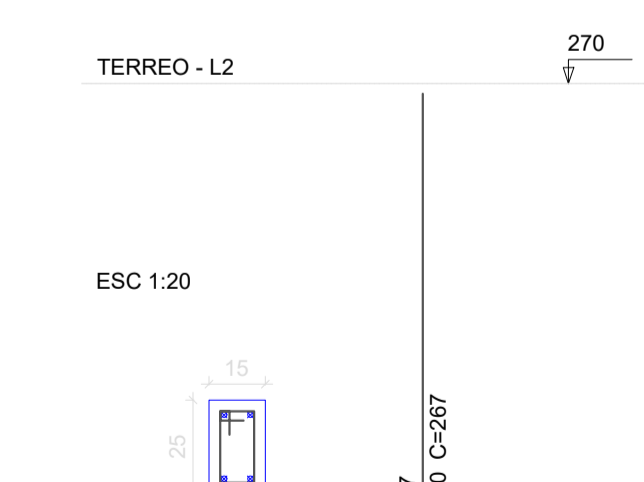
V12

ESC 1:50



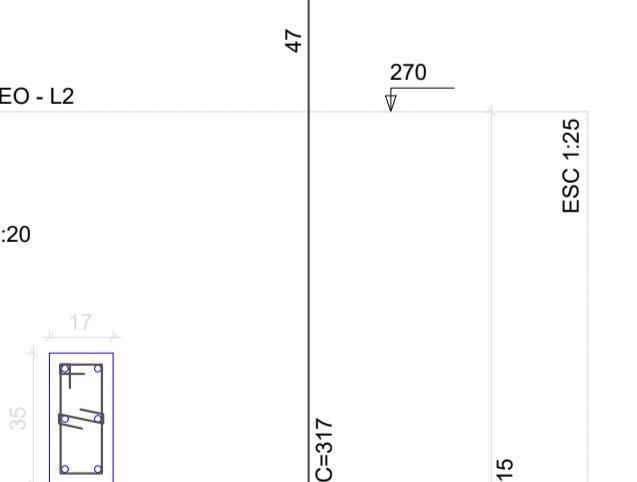
P1=P4

TERREO - L2 ESC 1:20



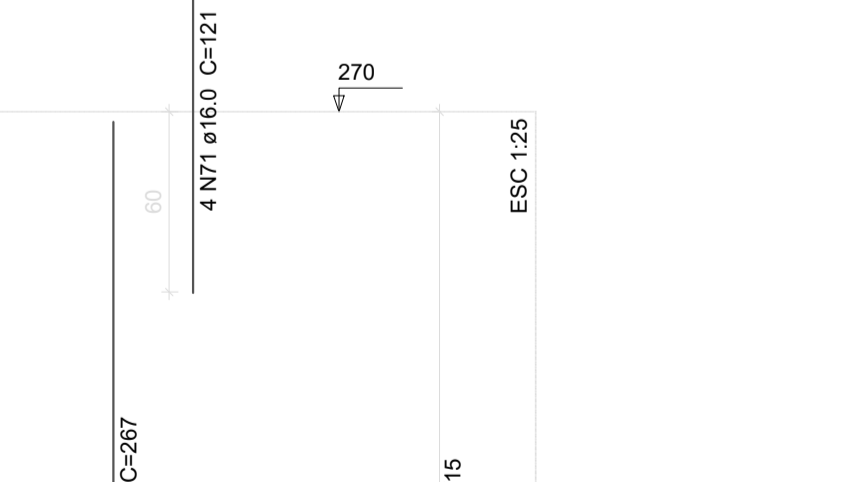
P2

TERREO - L2 ESC 1:20



P3

TERREO - L2 ESC 1:20



QUADRO DE ÁREAS:		OBRA:
Área Total	73.12 m²	BANHEIROS - PARQUE DE EXPOSIÇÕES
ENDEREÇO:		
		SC 390, S/N, BAIRRO CTG Bom Jardim da Serra - SC

RESP. TÉCNICO:  
Eng. Civil Jorge E. Batista Muniz  
CREA-SC 143778-1

PROPRIETÁRIO:  
Prefeitura Municipal de Bom Jardim da Serra  
CNPJ: 82.844.754/0001-82

DESCRICAÇÃO: PROJETO ESTRUTURAL  
SAPATAS  
PILARES  
VICAS

PRANCHA: 3/6

ESCALA: INDICADA

ÁREA TOTAL: 73.12m²

DATA: Novembro/2022

FORMATO PRANCHA: A1(841X594mm)

REVISÃO: JEBM-17/11/21