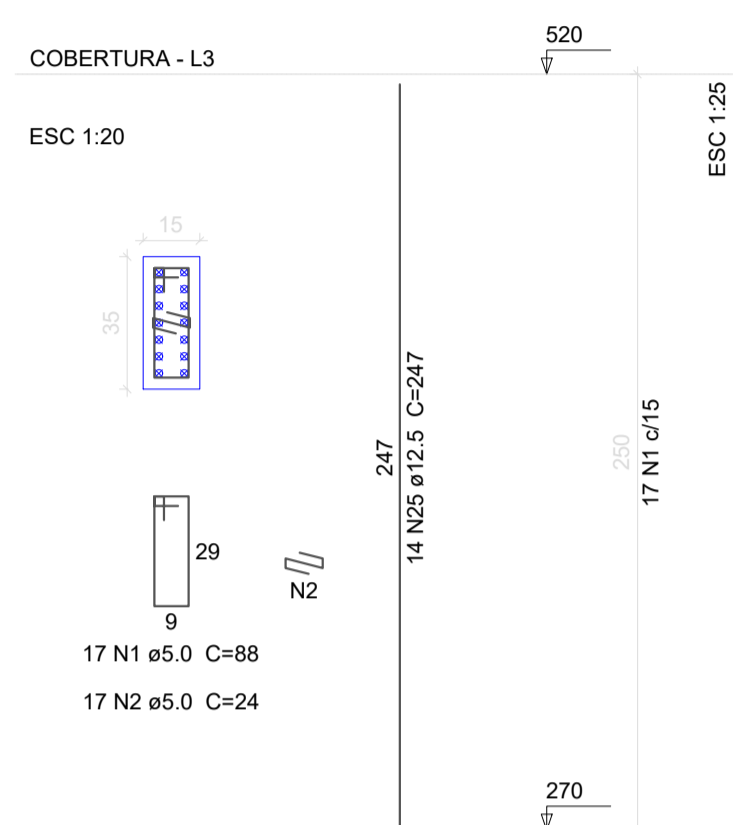
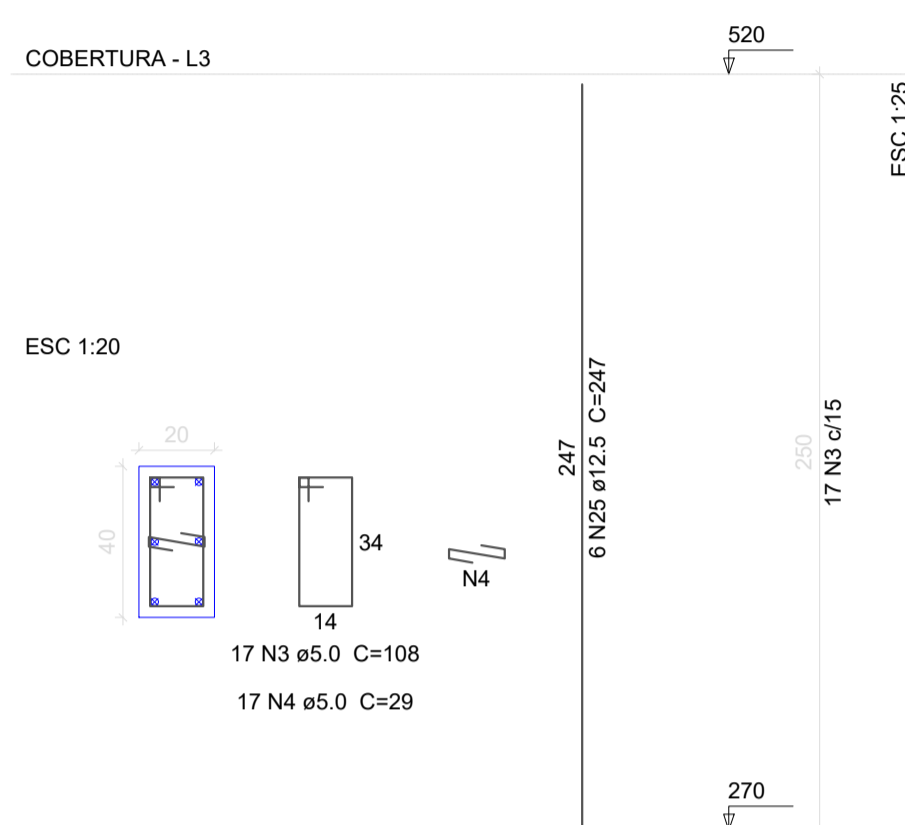


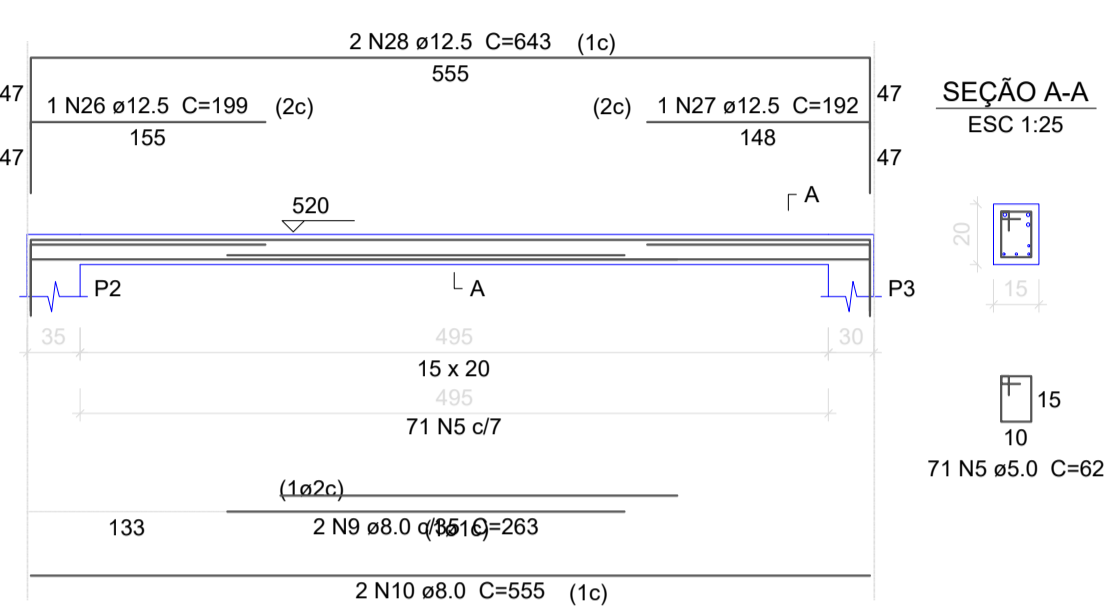
P5



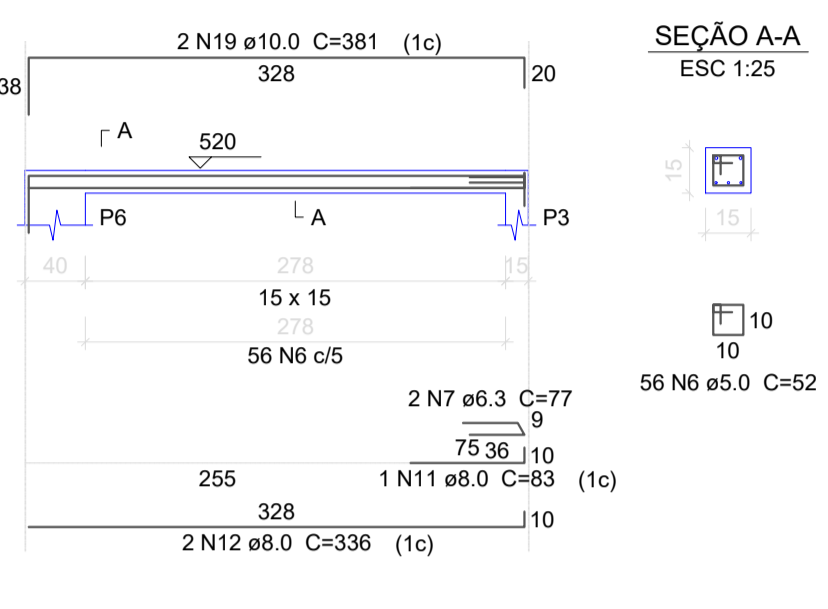
P6



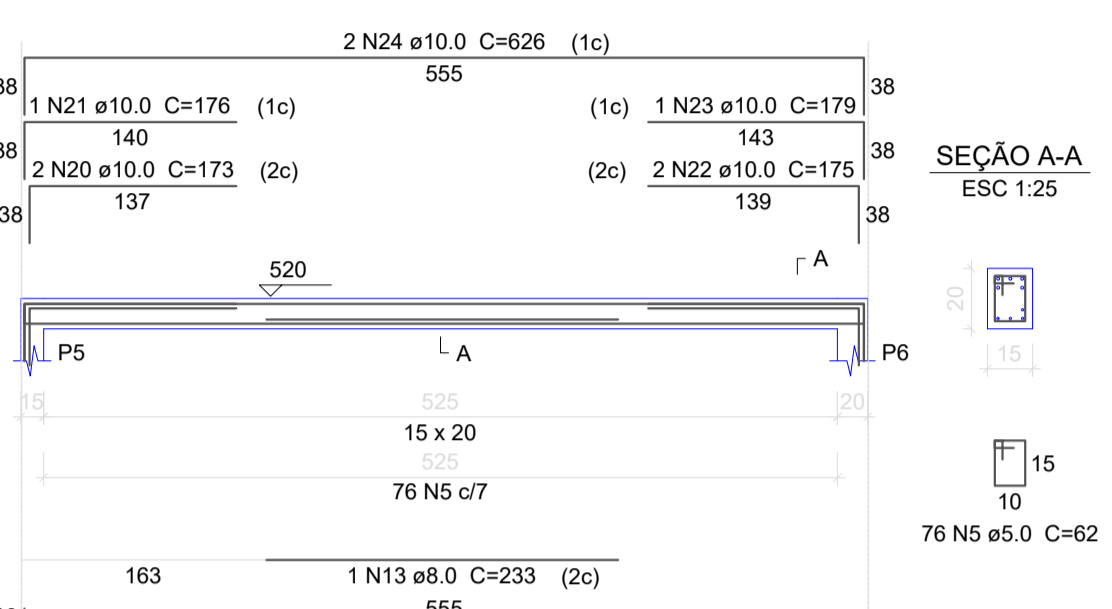
V1



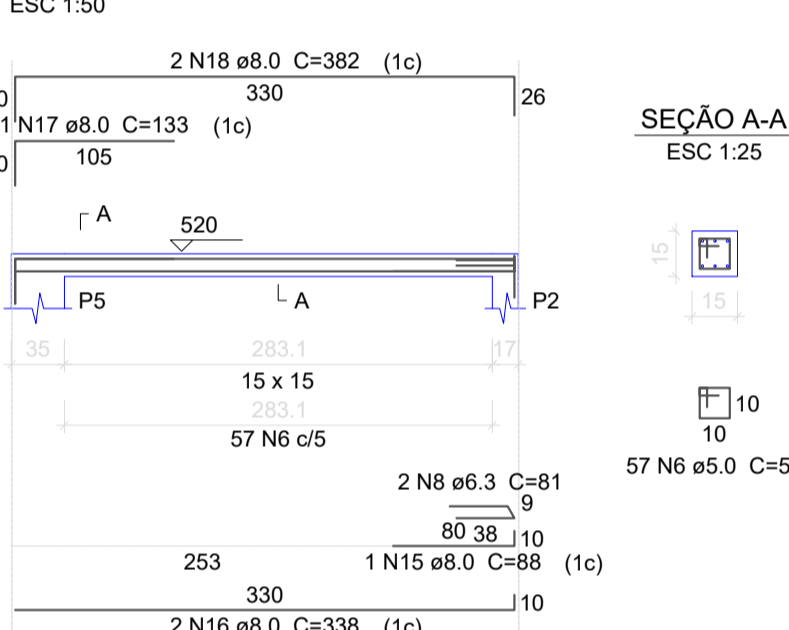
V2



V3



V4



Relação do aço

AÇO	N	DIAM	Q	UNIT (cm)	C.TOTAL (cm)	
					V1 V4	V3
CA60	1	5.0	17	88	1496	
	2	5.0	17	24	408	
	3	5.0	17	108	1836	
	4	5.0	17	29	493	
	5	5.0	147	62	9114	
	6	5.0	113	52	5876	
CA50	7	6.3	2	77	154	
	8	6.3	2	81	162	
	9	8.0	2	263	526	
	10	8.0	2	555	1110	
	11	8.0	1	83	83	
	12	8.0	2	336	672	
	13	8.0	1	233	233	
	14	8.0	3	563	1689	
	15	8.0	1	88	88	
	16	8.0	2	338	676	
	17	8.0	1	133	133	
	18	8.0	2	382	764	
	19	10.0	2	381	762	
	20	10.0	2	173	346	
	21	10.0	1	176	176	
	22	10.0	2	175	350	
	23	10.0	1	179	179	
	24	10.0	2	626	1252	
	25	12.5	20	247	4940	
	26	12.5	1	199	199	
	27	12.5	1	192	192	
	28	12.5	2	643	1286	

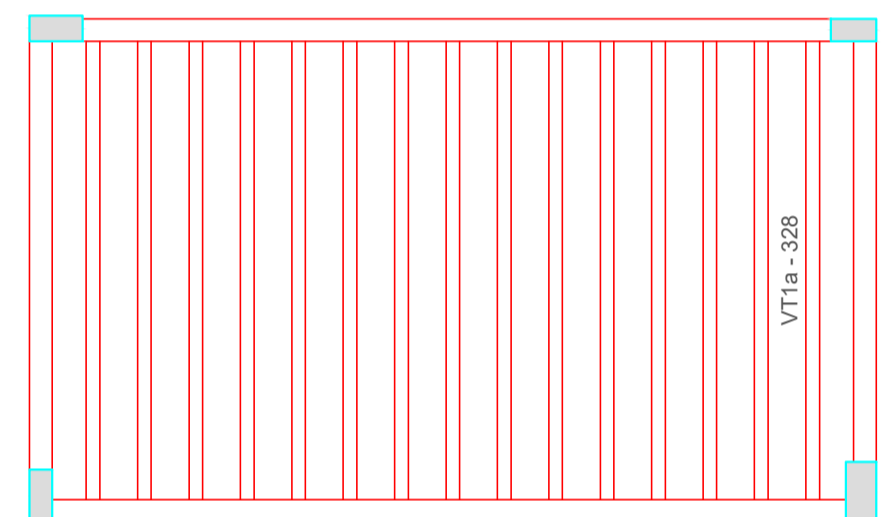
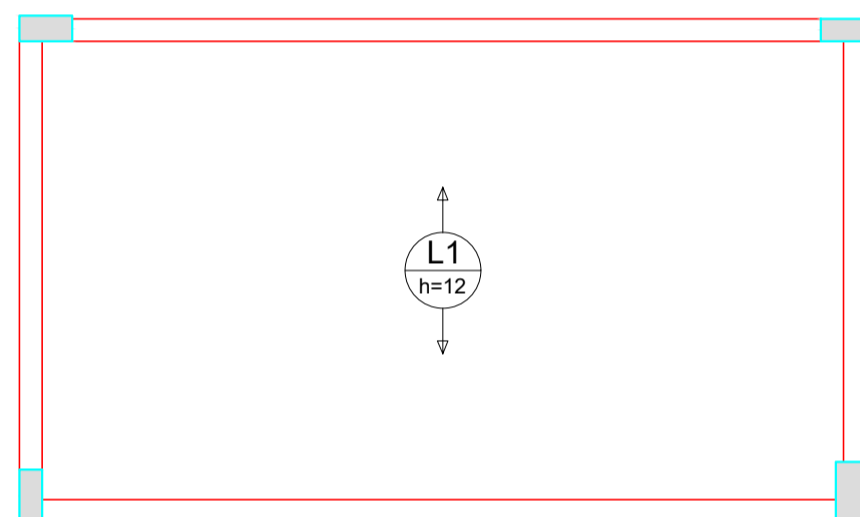
Resumo do aço

AÇO	DIAM	C.TOTAL (m)	PESO + 10 % (kg)
CA50	6.3	3.2	0.9
	8.0	59.8	25.9
	10.0	30.7	20.8
	12.5	66.2	70.1
CA60	5.0	192.3	32.6
PESO TOTAL			
CA50		117.7	
CA60		32.6	

Vol. de concreto total (C-25) = 0.82 m³
Área de forma total = 14.67 m²

Armação positiva das lajes do pavimento COBERTURA (Eixo Y)

Planta de vigas pré-moldadas



<p>QUADRO DE ÁREAS:</p> <p>Área Total: 73,12 m²</p>		<p>OBRA:</p> <p>BANHEIROS - PARQUE DE EXPOSIÇÕES</p>	
<p>ENDEREÇO:</p> <p>SC 390, S/N, BAIRRO CTG Bom Jardim da Serra - SC</p>			
<p>RESP. TÉCNICO:</p> <p>Eng. Civil Jorge E. Batista Muniz</p> <p>CREA-SC 143776-1</p>			
<p>PROPRIETÁRIO:</p> <p>Prefeitura Municipal de Bom Jardim da Serra</p> <p>CNPJ: 82.844.754/0001-82</p>			
<p>DESCRIÇÃO:</p> <p>PROJETO ESTRUTURAL</p> <p>PILARES VIGAS FORMAS</p>			<p>PRANCHA:</p> <p>6/6</p>
<p>ESCALA:</p> <p>INDICADA</p>	<p>ÁREA TOTAL:</p> <p>73,12m²</p>	<p>DATA:</p> <p>Novembro/2022</p>	<p>FORMATO PRANCHA:</p> <p>A1(841X594mm)</p>
<p>REVISÃO:</p> <p>JEBM-17/11/21</p>			