

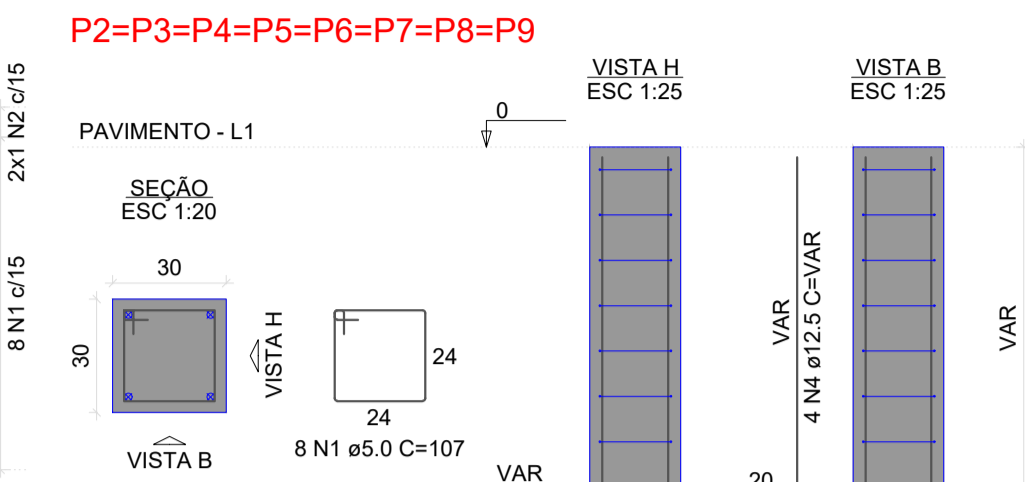
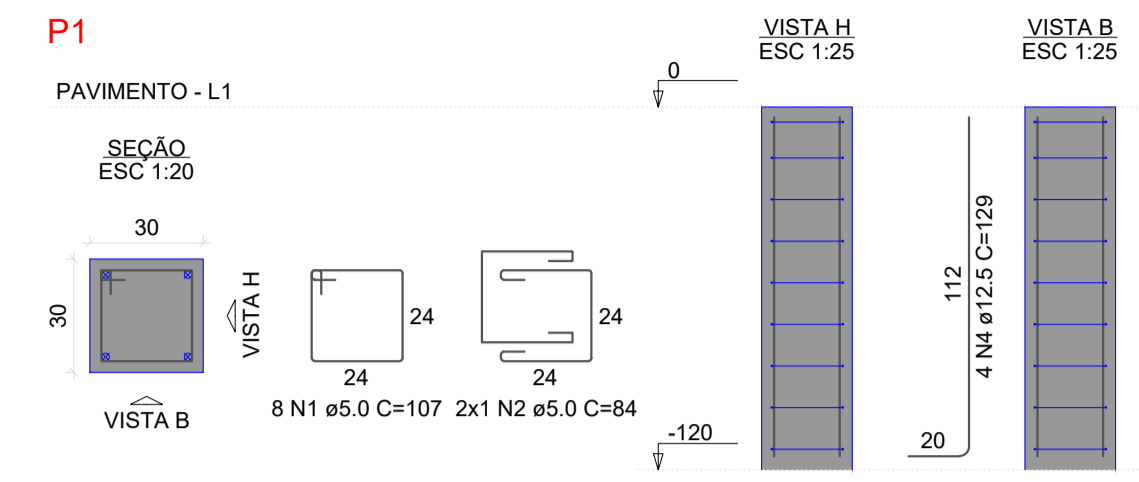
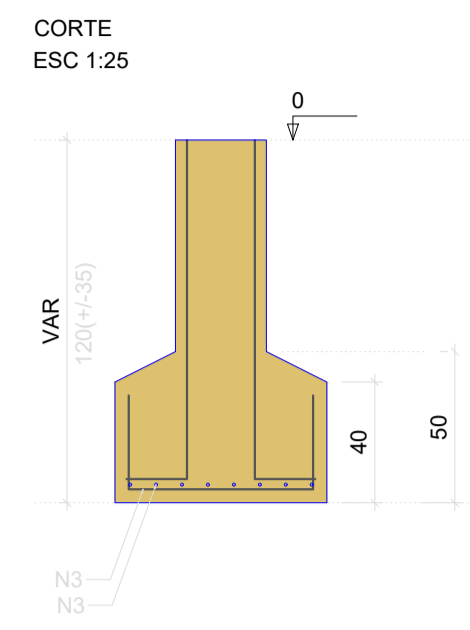
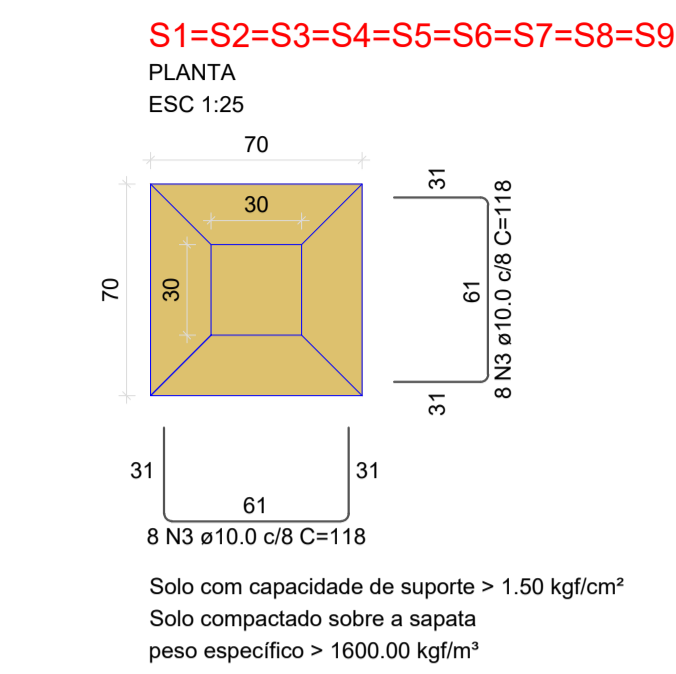
Vigas			
Nome	Seção (cm)	Elevação (cm)	Nível (cm)
V1	15x30	20	20
V2	15x30	20	20
V3	15x30	20	20
V4	15x15	35	35
V5	15x15	35	35
V6	15x15	35	35
V7	15x15	35	35
V8	15x15	35	35
V9	15x15	35	35

Características dos materiais		
fck (kgf/cm²)	Ecs (kgf/cm³)	
250	241500	

Dimensão máxima do agregado = 19 mm

Pilares			
Nome	Seção (cm)	Elevação (cm)	Nível (cm)
P1	30x30	0	0
P2	30x30	0	0
P3	30x30	0	0
P4	30x30	0	0
P5	30x30	0	0
P6	30x30	0	0
P7	30x30	0	0
P8	30x30	0	0
P9	30x30	0	0

Legenda dos pilares	
	Pilar que morre



RELAÇÃO DO AÇO

ACO	N	DIAM (mm)	QUANT	C.UNIT (cm)	C.TOTAL (cm)
CA60	1	5.0	72	107	7704
CA50	3	5.0	2	84	168
CA50	3	10.0	144	118	16992
CA60	4	12.5	36	120	4644

RESUMO DO AÇO

ACO	DIAM (mm)	C.TOTAL (m)	PESO + 10% (kg)
CA50	10.0	169.9	115.2
CA60	12.5	46.4	48.2
CA60	5.0	78.7	13.3

PESO TOTAL (kg)
CA50 164.4
CA60 13.3

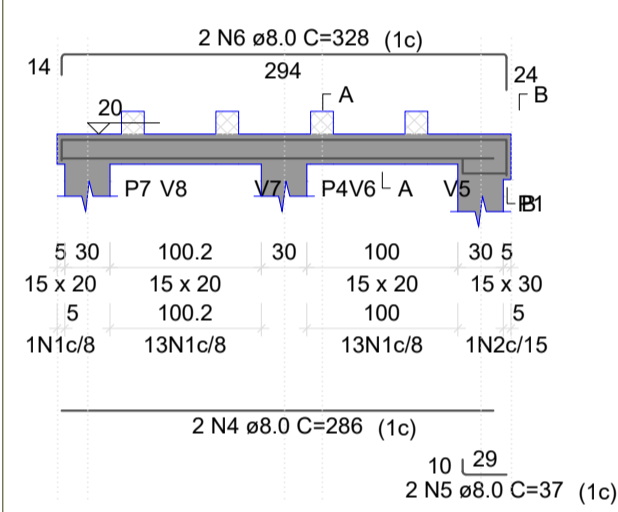
Volume de concreto (C-25) = 2.57 m³
Área de forma = 17.64 m²

Forma do pavimento Pavimento

escala 1:50

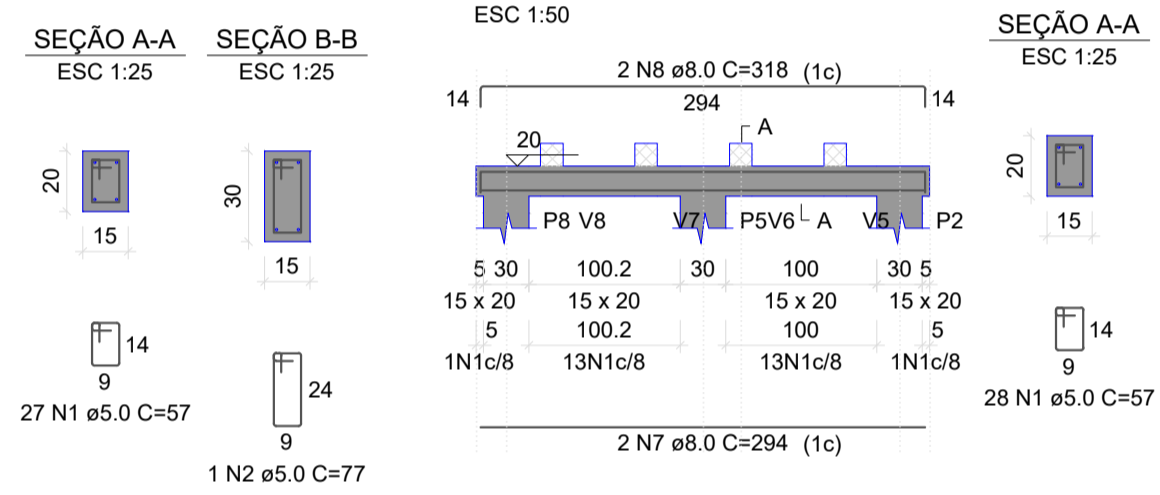
V1

ESC 1:50



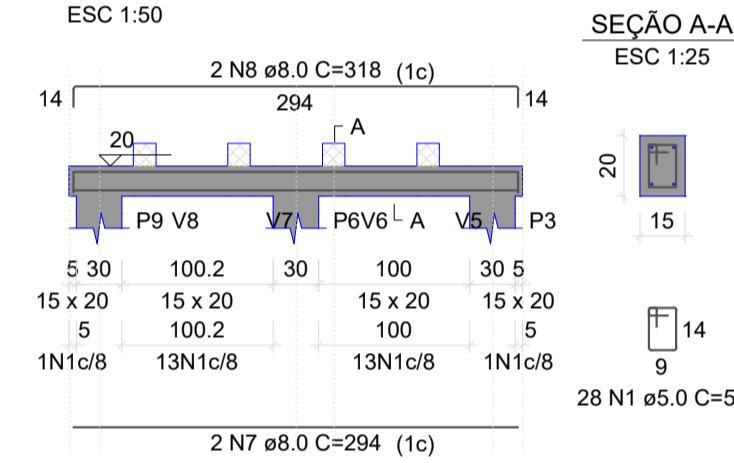
V2

ESC 1:50



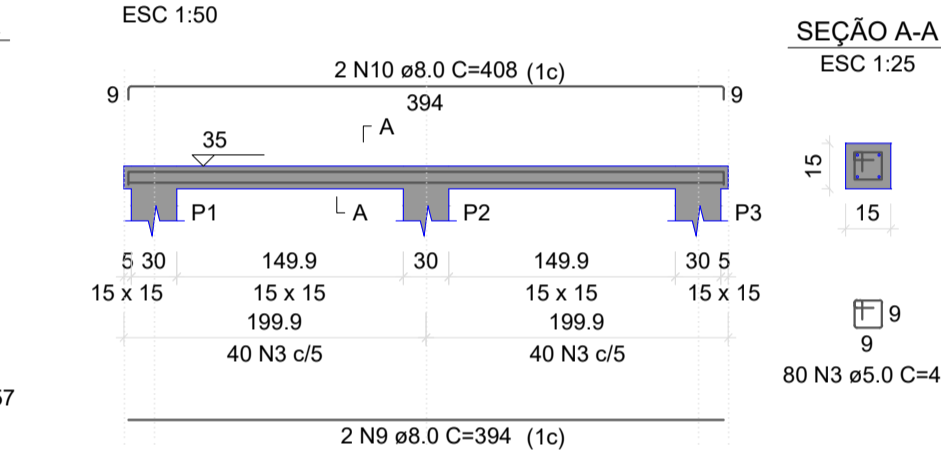
V3

ESC 1:50



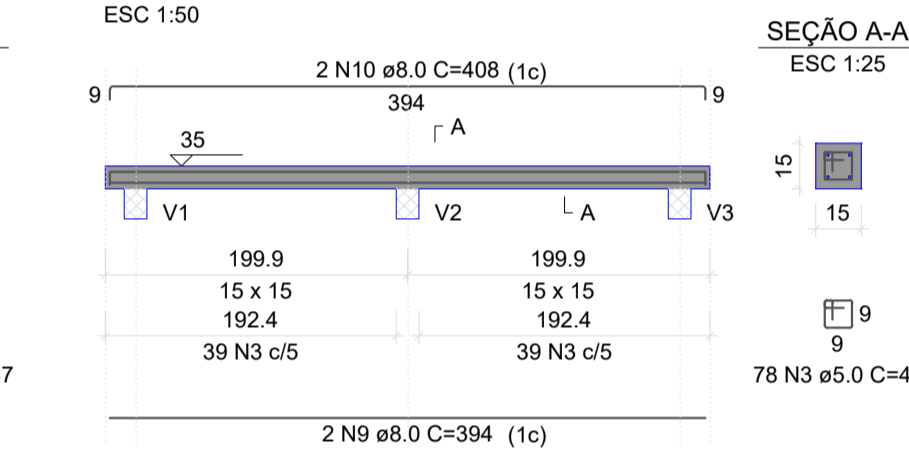
V4

ESC 1:50



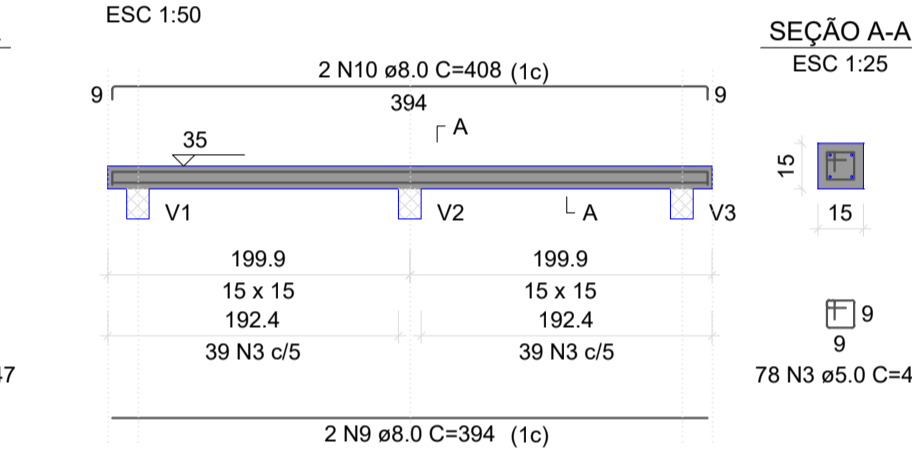
V5

ESC 1:50



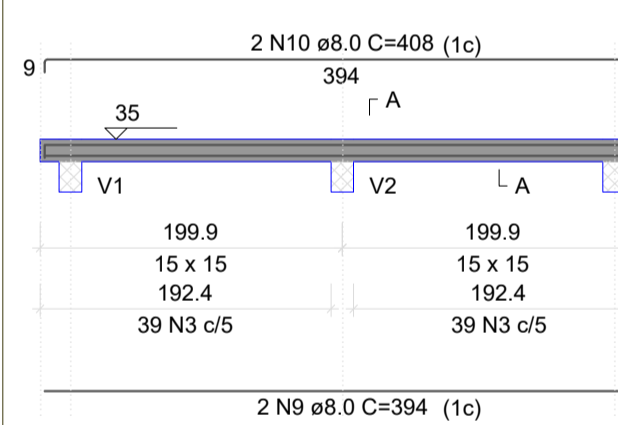
V6

ESC 1:50



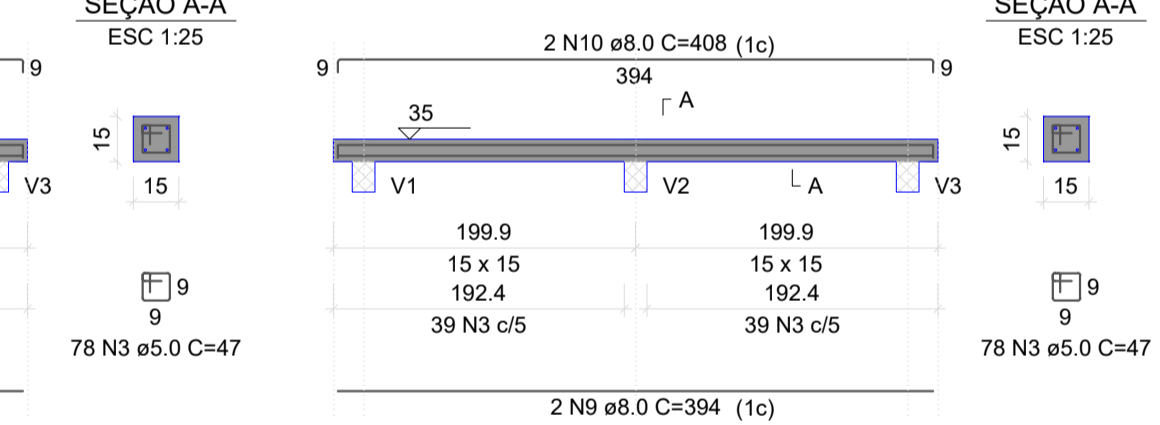
V7

ESC 1:50



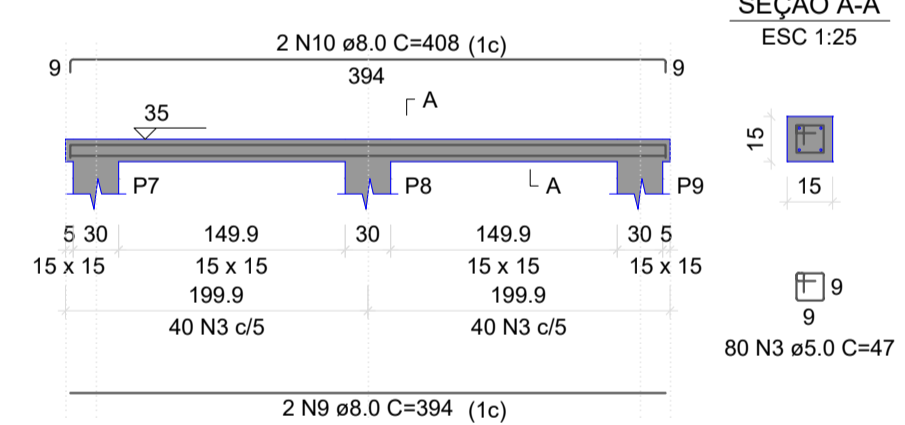
V8

ESC 1:50



V9

ESC 1:50



RELAÇÃO DO AÇO

ACO	N	DIAM (mm)	QUANT	C.UNIT (cm)	C.TOTAL (cm)
CA60	1	5.0	83	57	4731
CA50	2	5.0	1	77	77
CA50	3	5.0	472	47	22184
CA50	4	8.0	2	286	572
CA50	5	8.0	2	37	74
CA50	6	8.0	2	328	656
CA50	7	8.0	4	294	1176
CA50	8	8.0	4	318	1272
CA50	9	8.0	12	394	4728
CA50	10	8.0	12	408	4896

RESUMO DO AÇO

ACO	DIAM (mm)	C.TOTAL (m)	PESO + 10% (kg)
CA50	8.0	133.7	58
CA60	5.0	208.9	45.8

PESO TOTAL (kg)
CA50 58
CA60 45.8

Volume de concreto (C-25) = 0.81 m³
Área de forma = 15.76 m²



PREFEITURA DE BOM JARDIM DA SERRA

Projeto de Revitalização

MIRANTE DA CASCATÁ

SC-390 | Bom Jardim da Serra / SC

Projeto:
Estrutural

Descrição:
Fôrma, Sapatas, Pilares e Vigas do deck 3x4

Escala: indicada
Data: Junho | 2023

Responsável Técnico: Jorge E. Batista Muniz
Engenheiro Civil. CREA | SC 143778-1

06