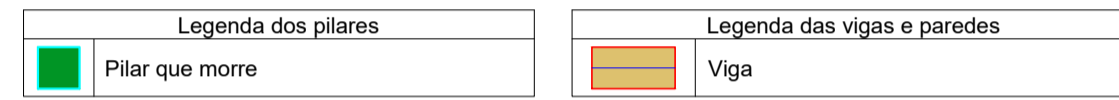


Vigas			
Nome	Seção (cm)	Elevação (cm)	Nível (cm)
V1	15x20	20	20
V2	15x20	20	20
V3	15x20	20	20
V4	15x15	35	35
V5	15x15	35	35
V6	15x15	35	35
V7	15x15	35	35
V8	15x15	35	35
V9	15x15	35	35

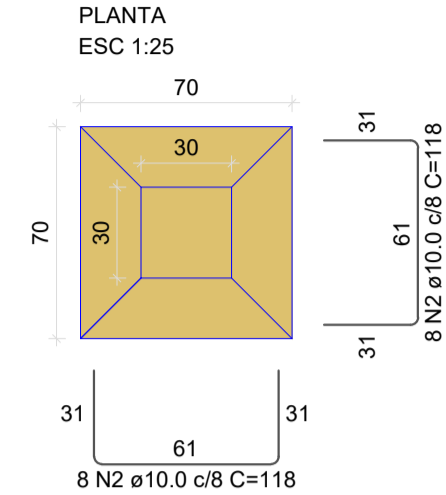
Características dos materiais		
fck (kgf/cm²)	Ecs (kgf/cm²)	
250	241500	

Dimensão máxima do agregado = 19 mm

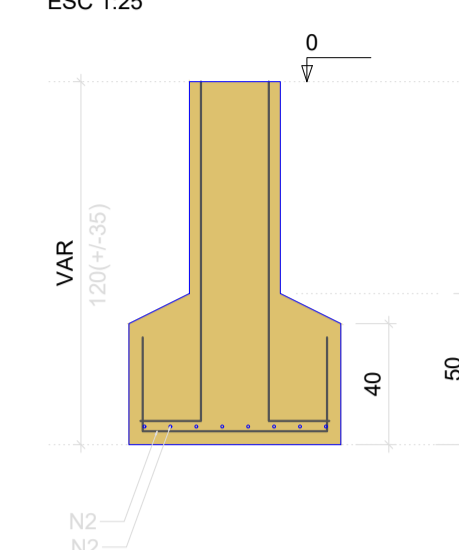
Pilares			
Nome	Seção (cm)	Elevação (cm)	Nível (cm)
P1	30x30	0	0
P2	30x30	0	0
P3	30x30	0	0
P4	30x30	0	0
P5	30x30	0	0
P6	30x30	0	0
P7	30x30	0	0
P8	30x30	0	0
P9	30x30	0	0



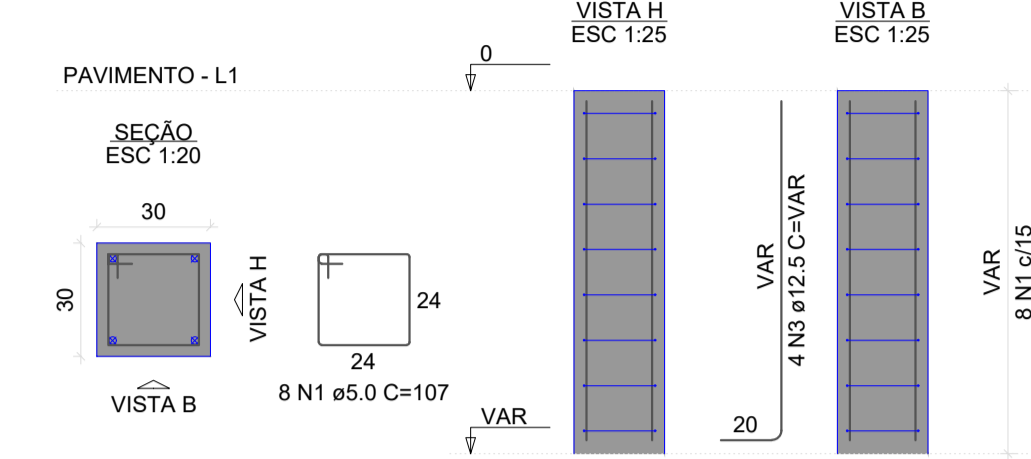
S1=S2=S3=S4=S5=S6=S7=S8=S9



CORTE ESC 1:25



P1=P2=P3=P4=P5=P6=P7=P8=P9



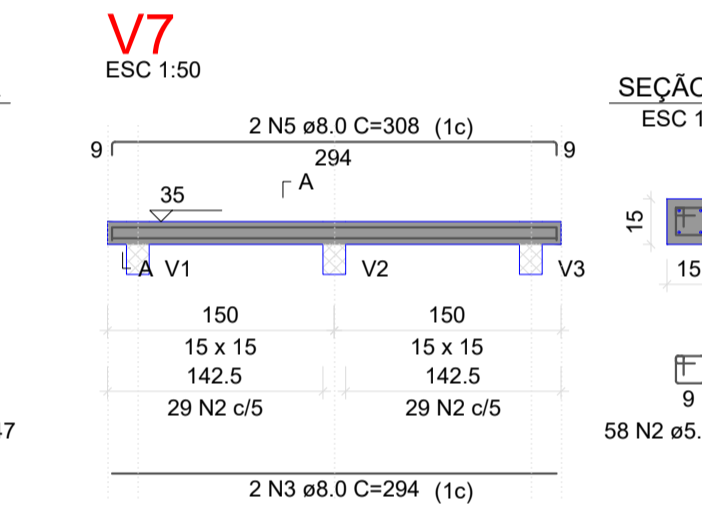
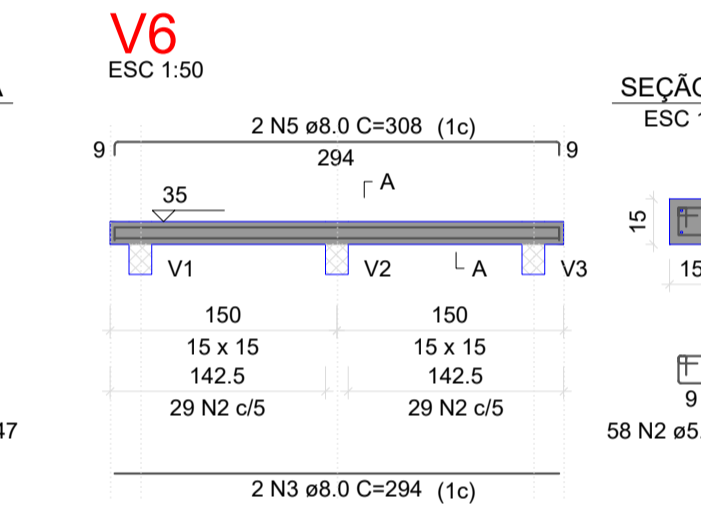
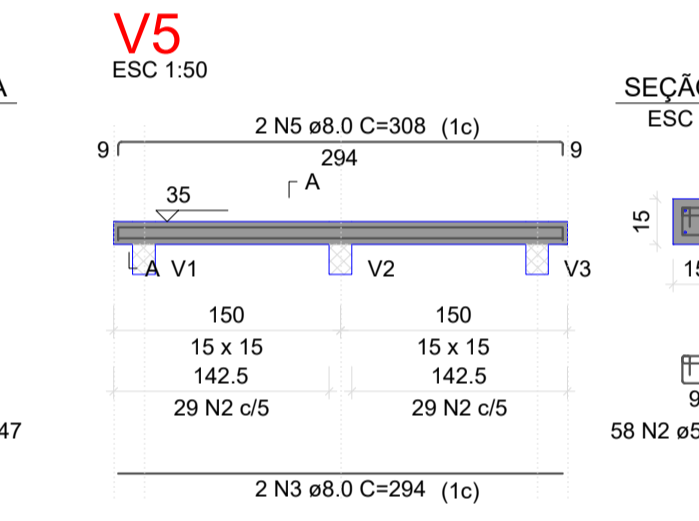
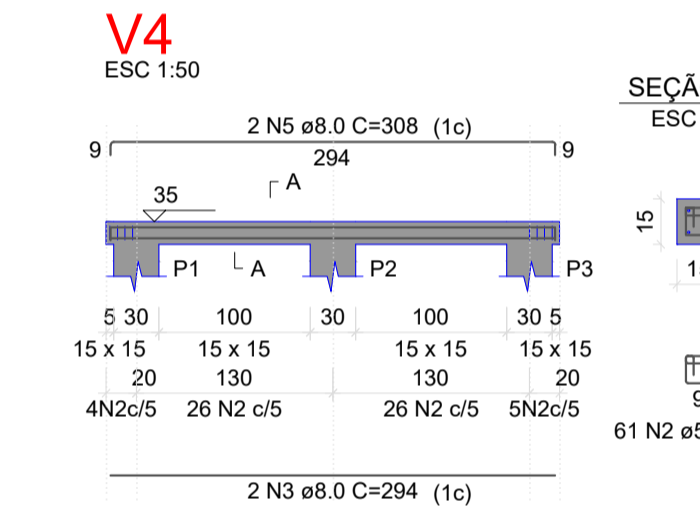
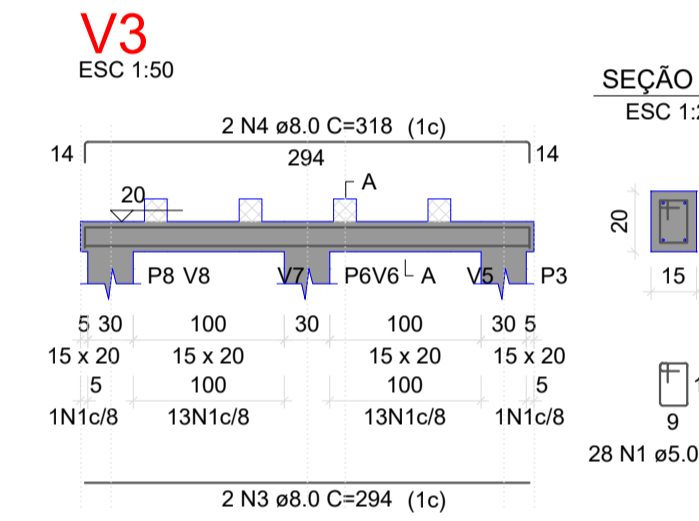
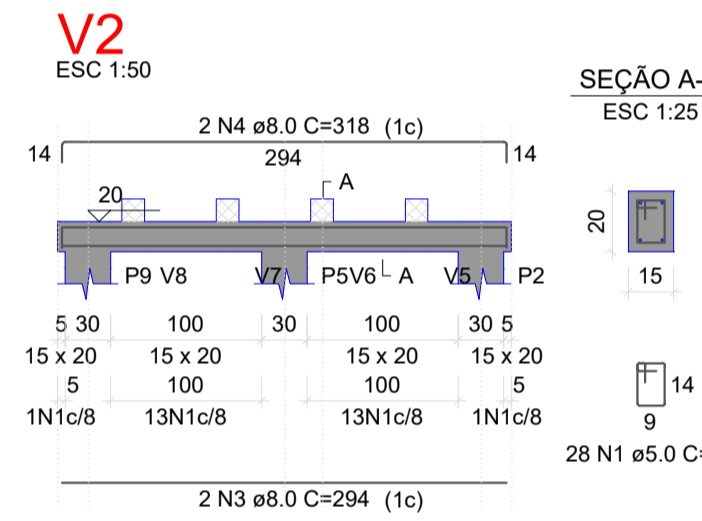
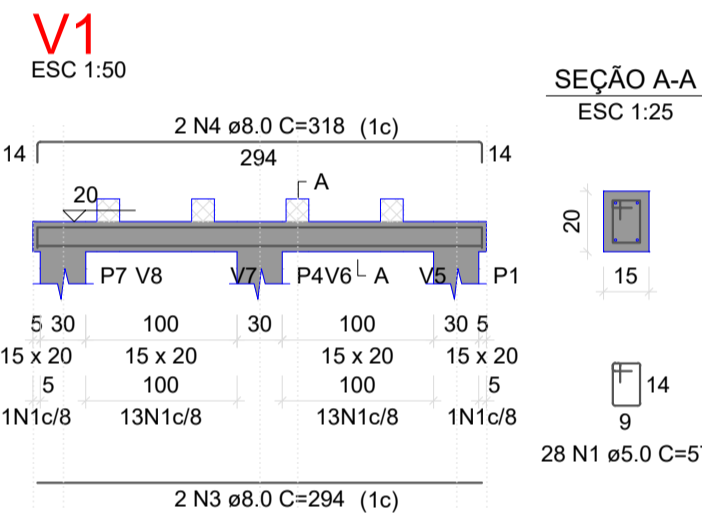
RELAÇÃO DO AÇO					
AÇO	N	DIAM (mm)	QUANT	C.UNIT (cm)	C.TOTAL (cm)
CA60	1	5.0	72	107	7704
CA50	2	10.0	144	118	16992
	3	12.5	36	VAR	VAR

RESUMO DO AÇO			
AÇO	DIAM (mm)	C.TOTAL (m)	PESO + 10% (kg)
CA50	10.0	169.9	115.2
CA60	5.0	46.4	49.2
		77	13.1
PESO TOTAL (kg)			
CA50		164.4	
CA60		13.1	

Volume de concreto (C-25) = 2.57 m³
Área de forma = 17.64 m²

Forma do pavimento Pavimento

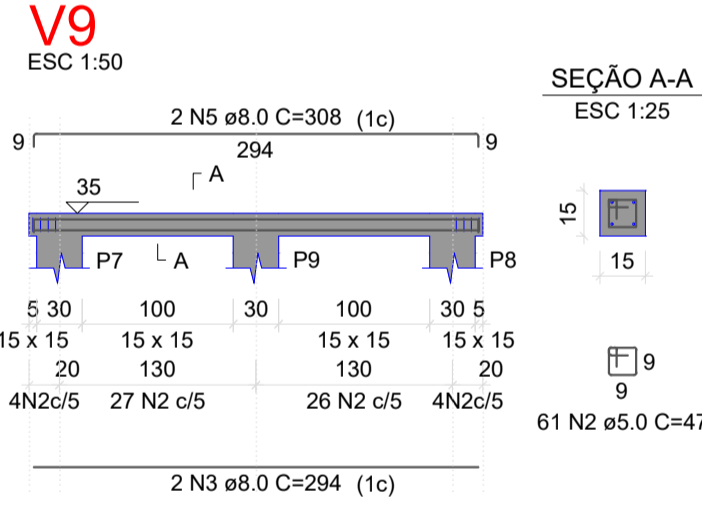
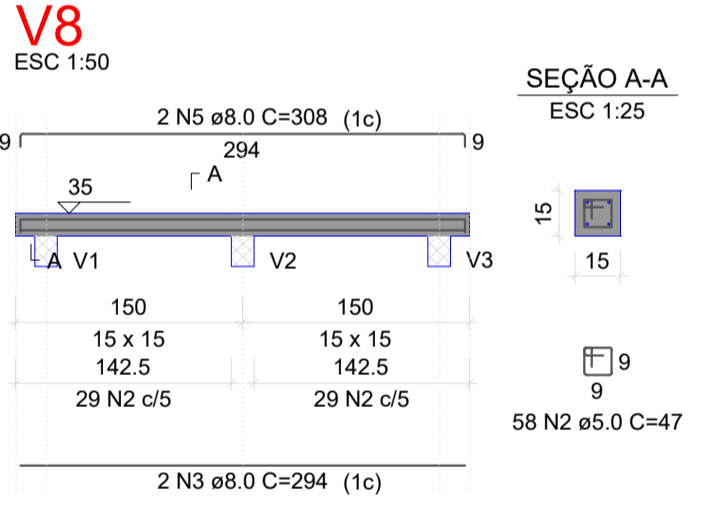
escala 1:50




RELAÇÃO DO AÇO					
AÇO	N	DIAM (mm)	QUANT	C.UNIT (cm)	C.TOTAL (cm)
CA60	1	5.0	84	57	4788
CA50	2	5.0	354	47	16638
	3	8.0	18	294	5292
	4	8.0	6	318	1908
	5	8.0	12	308	3696

RESUMO DO AÇO			
AÇO	DIAM (mm)	C.TOTAL (m)	PESO + 10% (kg)
CA50	8.0	109	47.3
CA60	5.0	214.3	36.3
PESO TOTAL (kg)			
CA50		47.3	
CA60		36.3	

Volume de concreto (C-25) = 0.68 m³
Área de forma = 13.05 m²





PREFEITURA DE BOM JARDIM DA SERRA

Projeto de Revitalização
MIRANTE DA CASCATÁ

Assinado de forma digital por PEDRO LUIZ OSETTO:5220284 220284495 4953
Data: 2023.06.18 20:30:47 -03'00'

Assinado de forma digital por JORGE EMANUEL BATISTA MUNIZ:08275249945 4953
Data: 2023.06.13 14:19:17 -03'00'

Projeto: Estrutural

Descrição: Fôrma, Sapatas, Pilares e Vigas do deck 3x3

Escala: indicada

Data: Junho | 2023

Responsável Técnico: Jorge E. Batista Muniz
Engenheiro Civil. CREA | SC 143778-1

05