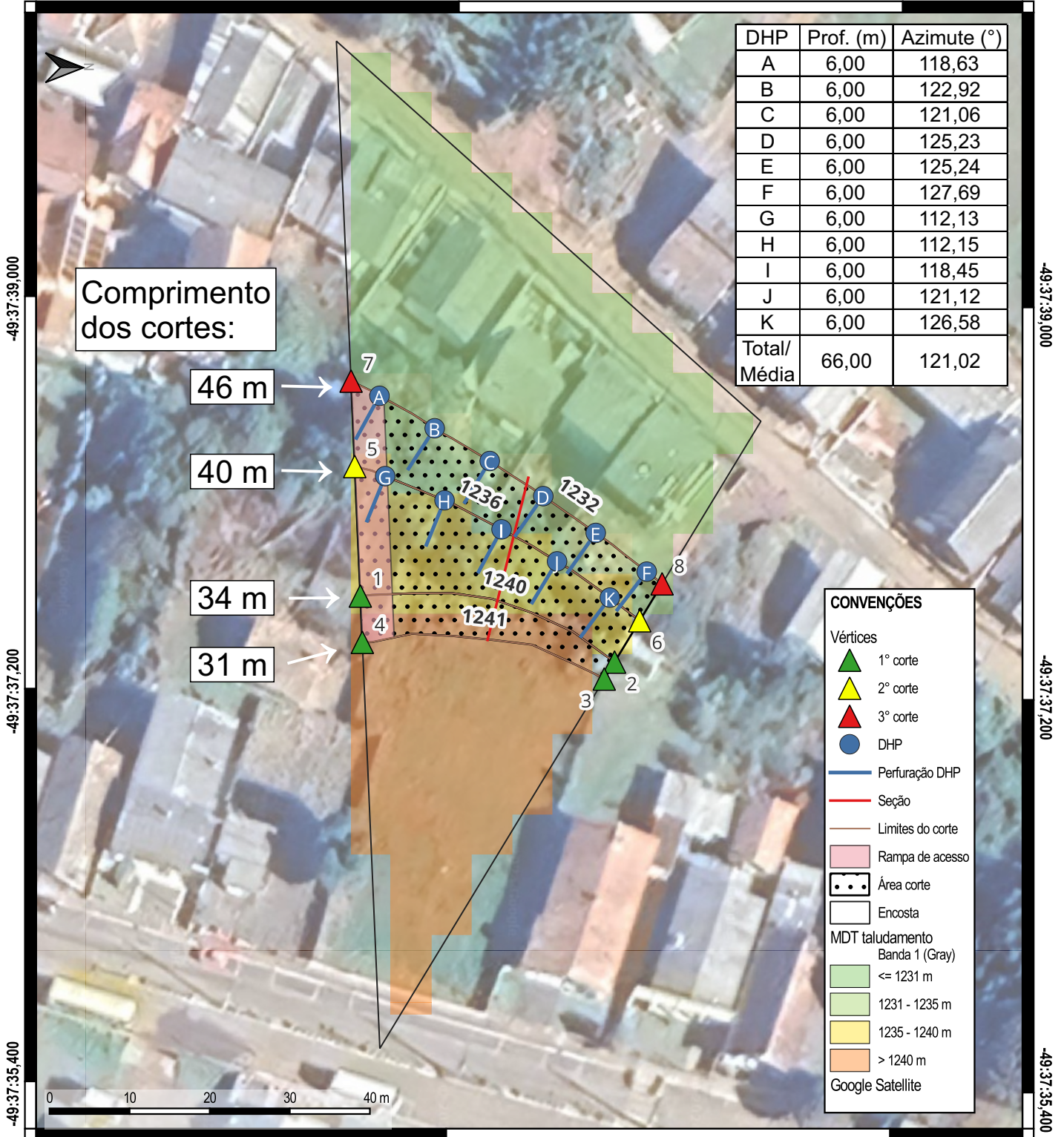


PLANTA E SEÇÃO DO TALUDE

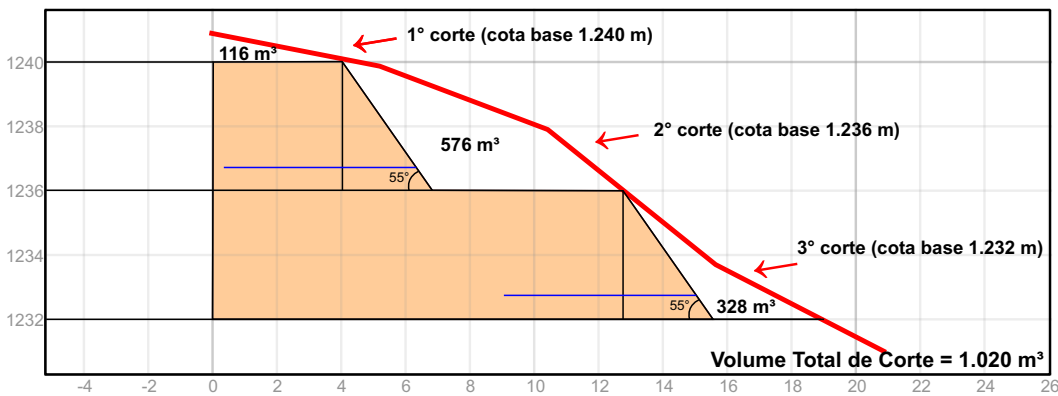
-28:20:15,000

-28:20:13,200



-28:20:15,000

-28:20:13,200



1° corte (cota base 1.240 m)

$$\text{Volume} = (2.463 - 1.547 - 1 \times 800) \text{ m}^3$$

$$\text{Volume} = 116 \text{ m}^3$$

2° corte (cota base 1.236 m)

$$\text{Volume} = (7.231 - 2.463 - 4 \times 1.000 - 192) \text{ m}^3$$

$$\text{Volume} = 576 \text{ m}^3$$

3° corte (cota base 1.232 m)

$$\text{Volume} = (13.189 - 7.231 - 4 \times 1.350 - 230) \text{ m}^3$$

$$\text{Volume} = 328 \text{ m}^3$$